



---

## SURFACE MOUNTED CHANNEL INSTALLATION GUIDE

Tech Support: 212.629.6830



Our US team is in place to answer all of your product questions and help with installations.



**U.S. 24-HR TECHNICAL SUPPORT**

(+1) 212 629 6830 \*301  
Tech@GENLEDBrands.com



**U.S. PRICING & SALES SUPPORT**

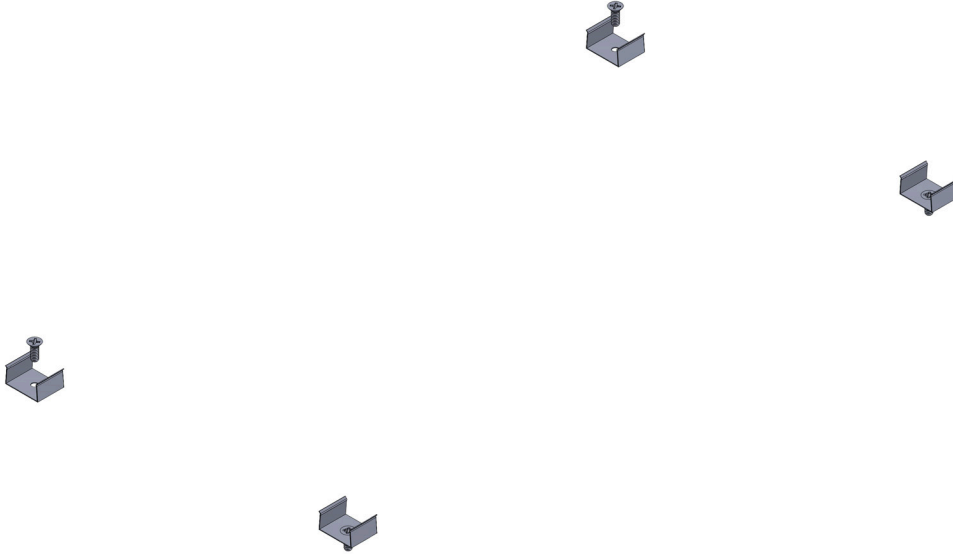
(+1) 212 629 6830 \*300  
Sales-US@GENLEDBrands.com



**U.S. CUSTOMER SERVICE**

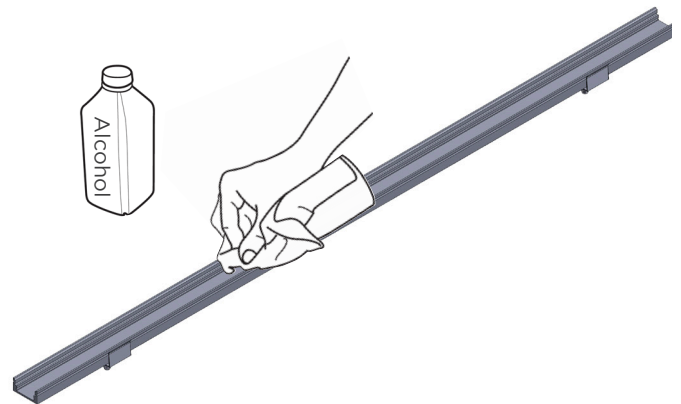
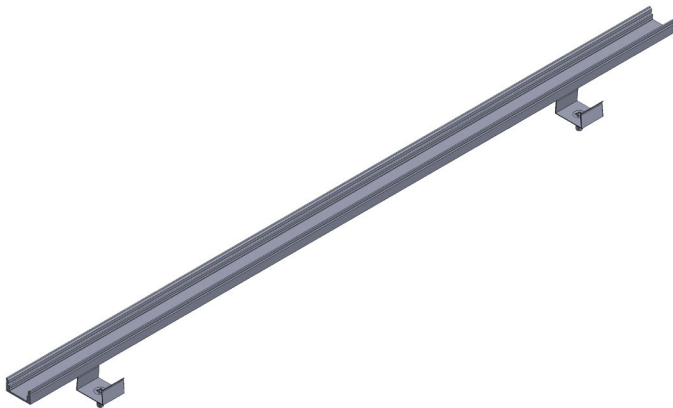
(+1) 212 629 6830 \*304  
CustomerService@GENLEDBrands.com

1. Measure the desired path of the channel and mark the location of the mounting clips. Drill pilot holes and fasten the mounting clips to the surface to be mounted to.

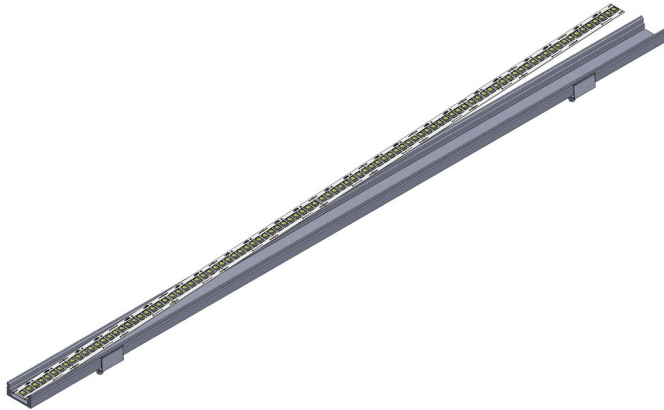


2. Align the channel with the mounting clips and push downward to snap the channel in place.

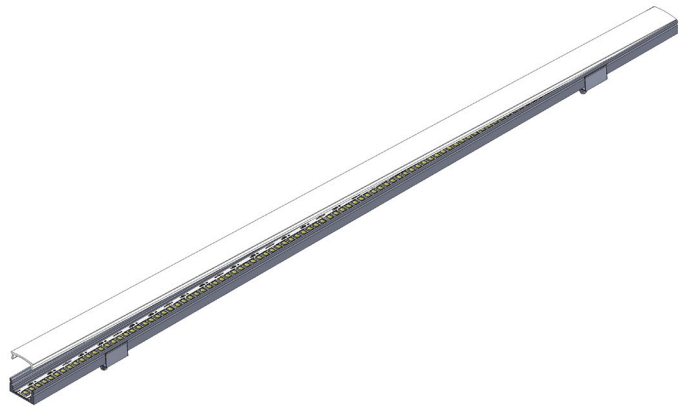
3. Clean the channel mounting surface free of dust and debris using a cloth and rubbing alcohol.



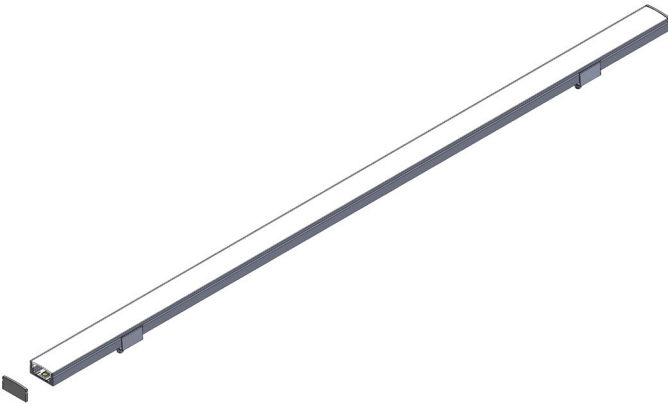
4. After the surface has dried, apply the ribbonlyte to the mounting surface inside of the channel. Make all necessary electrical connections.



5. Insert the lens by snapping or sliding it into place on the channel.



6. Insert the end caps.



7. Fixture installation complete.

