

FLEXIBLE BACKLYTE

Perfect for back lighting advertisements or translucent panels like onyx, stone and resin panels, our Flexible BackLytes can be bent and cut into virtually any shape. They're lightweight with even light spread and fully customizable.

- Available in six white color temperatures and five static colors
- 24V DC input
- Thin profile
- Light weight
- UV Protection
- 3-year limited warranty

Applications:

Commercial

Entertainment

Healthcare

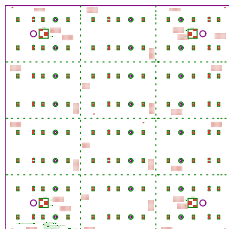
Hospitality

Museums

Public Spaces

Residential

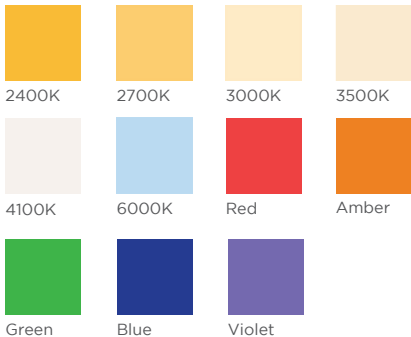
Retail



ORDERING GUIDE

Category	Color Temp.
FBL11	
FBL11 - Flexible Backlyte	<div>24 - 2400K R - Red</div> <div>27 - 2700K A - Amber</div> <div>30 - 3000K G - Green</div> <div>35 - 3500K B - Blue</div> <div>41 - 4000K V - Violet</div> <div>60 - 6000K</div>

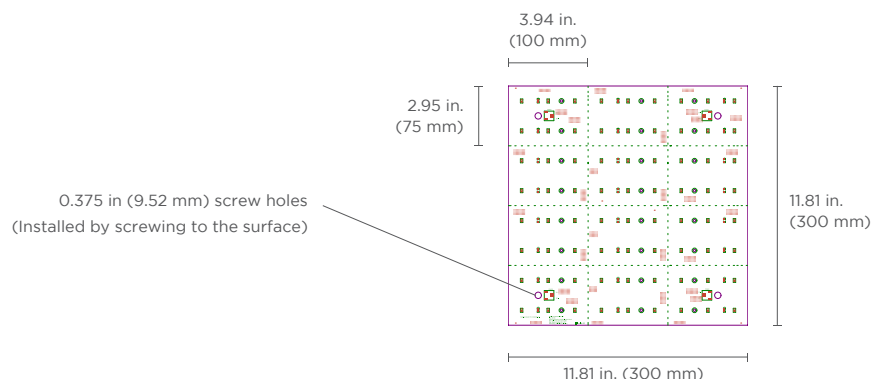
AVAILABLE COLOR TEMPERATURES



SPECIFICATIONS / DIMENSIONS / ACCESSORIES

Operating Voltage	24V DC
Power Consumption	10.7 W/sq ft (115 W/sq m)
Protection Rating	IP20
Dimming	0-10V, MLV, ELV, and Triac
Ambient Temperature	-40° F to 158° (-40° C to 70° C)
Color Temperature	2400K, 2700K, 3000K, 3500K, 4100K, 6000K, Red, Amber, Green, Blue, Violet
Lumens per Watt	97 lm/W (White)
LED Spacing	1.5 in. (37.5 mm)
Maximum Number of Daisy Chained Fixtures	8 fixtures
Lamp Life	50,000 Hours
CRI (White LEDs)	90+ CRI
Connector Types	Bare end wire or 2-conductor IP20 connectors
Constant Voltage	✓
Weight	0.54 lb (243 g)
Row/Column Dimensions	11.81 in. (300 mm) Rows: 2.95 in. (75 mm) Column widths: 3.94 in. (100 mm)

DIMENSIONS



Thickness	0.19 in. (4.7 mm)
Length	11.81 in. (300 mm), or customized length
Width	11.81 in. (300 mm), or customized width

ACCESSORIES



DRIVERS
See Drivers Guide



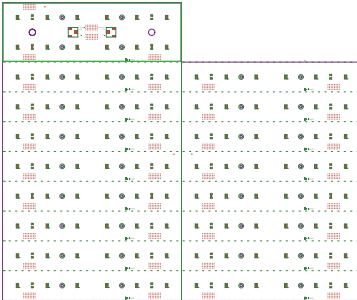
CONTROLLERS
See Controllers Guide

TRIMMING AND POWER INPUT CORNERS / USAGE GUIDELINES

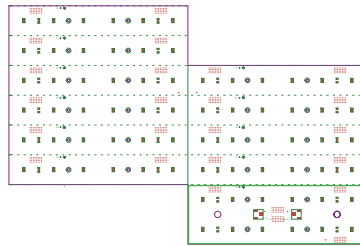
TRIMMING AND POWER INPUT CORNERS

- Any of the 4 power input corners (outlined in green) can supply power to the entire sheet of Flexible BackLyte. The Flexible BackLyte can be trimmed into the desired shape along the dotted lines and be powered up with any one of the 4 power input corners. See examples below:

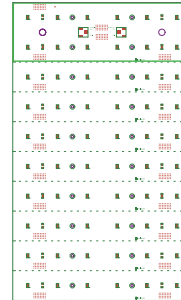
Example 1



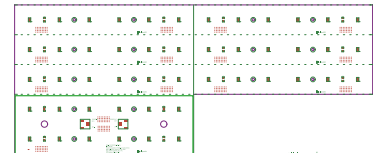
Example 2



Example 3



Example 4



USAGE GUIDELINES

- Use with non-GENLED Acolyte[®] supplied drivers and interfaces is not supported or warranted.
- We reserve the right to make changes to product lineup, specifications, design and finishes at any time without notice.