

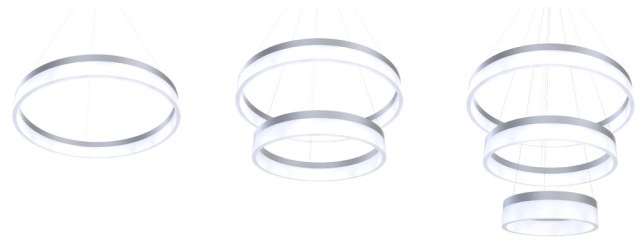
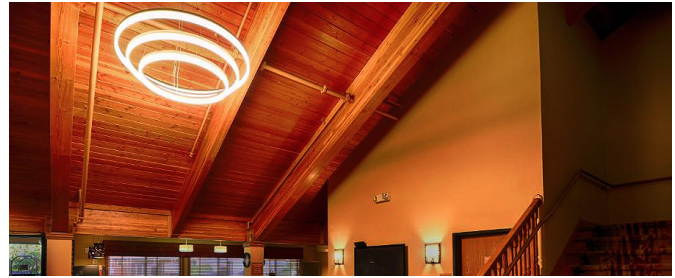
Date _____ Project _____

Notes _____

GEOLYTE CIRCLE

GENLED Acolyte® GeoLyte Circle fixtures are a great decorative companion to our linear LED products. Available in three color temperatures, a variety of GeoLyte Circle sizes and ring combinations provide stunning direct and indirect lighting options.

- Single, double and triple ring fixtures
- Sizes range from 11.8" (300mm) diameter up to 47.2" (1.2m)
- Black, Silver, White and Bronze surface finishes
- 1-10V Dimming, compatible with 0-10 V dimmers
- CRI > 80
- Up to 10,550 lumens
- Input Voltage: 100-277 VAC



Applications:

- | | | |
|---------------|---------------|-------------|
| Commercial | Hospitality | Residential |
| Entertainment | Museums | Retail |
| Healthcare | Public Spaces | |



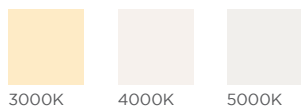
ORDERING GUIDE

Category	Shape	Size	Light Direction	Color Temp.	
GL	CIR				
GL - Geolyte	CIR - Circular	S1 - Single 11.8" (300mm) S2 - Single 17.7" (450mm) S3 - Single 23.6" (600mm) S4 - Single 31.5" (800mm) S5 - Single 39.3" (1000mm) S6 - Single 47.2" (1200mm)	D1 - Double 11.8"x17.7" (300x450mm) D2 - Double 17.7"x23.6" (450x600mm) D3 - Double 31.5"x39.3" (800x1000mm) D4 - Double 39.3"x47.2" (1000x1200mm) T1 - Triple 11.8"x17.7"x23.6" (300x450x600mm) T2 - Triple 31.5"x39.3"x47.2" (800x1000x1200mm)	D - Direct I - Indirect	30 - 3000K 40 - 4000K 50 - 5000K

Surface Finish



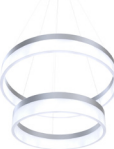



- K - Black
- AG - Silver
- W - White
- BZ - Bronze

AVAILABLE COLOR TEMPERATURES





SPECIFICATIONS

	SINGLE DIRECT	SINGLE INDIRECT
Specs	 <p>11.8" (300mm) 10W 900-1000 lm 17.7" (450mm) 20W 1700-1900 lm 23.6" (600mm) 30W 2700-3000 lm 31.5" (800mm) 40W 3400-3800 lm 39.4" (1m) 50W 4400-4900 lm 47.2" (1.2m) 60W 5100-5700 lm</p>	 <p>11.8" (300mm) 10W 900-1000 lm 17.7" (450mm) 20W 1700-1900 lm 23.6" (600mm) 30W 2700-3000 lm 31.5" (800mm) 40W 3400-3800 lm 39.4" (1m) 50W 4400-4900 lm 47.2" (1.2m) 60W 5100-5700 lm</p>
	DOUBLE DIRECT	DOUBLE INDIRECT
Specs	 <p>11.8"+17.7" (300mm+450mm) 30W 2600-2900 lm 17.7"+23.6" (450mm+600mm) 50W 4400-4900 lm 31.5"+39.4" (800mm+1m) 90W 7800-8700 lm 39.4"+47.2" (1m+1.2m) 110W 9550-10,550lm</p>	 <p>11.8"+17.7" (300mm+450mm) 30W 2600-2900 lm 17.7"+23.6" (450mm+600mm) 50W 4400-4900 lm 31.5"+39.4" (800mm+1m) 90W 7800-8700 lm 39.4"+47.2" (1m+1.2m) 110W 9550-10,550lm</p>
	TRIPLE DIRECT	TRIPLE INDIRECT
Specs	 <p>11.8"+17.7"+23.6" (300mm+450mm+600mm) 60W 5300-5900 lm 31.5"+39.4"+47.2" (800mm+1m+1.2m) 90W 7650-8450 lm</p>	 <p>11.8"+17.7"+23.6" (300mm+450mm+600mm) 60W 5300-5900 lm 31.5"+39.4"+47.2" (800mm+1m+1.2m) 90W 7650-8450 lm</p>
	DIMENSIONS	
	Height of Each Ring	2.95 in (75 mm)

LUMEN SUMMARY

Lumens	11.8" (300mm)	17.7" (450mm)	23.6" (600mm)	31.5" (800mm)	39.3" (1000mm)	47.2" (1200mm)			
SINGLE	3000K	900 lm	1700 lm	2700 lm	3400 lm	4400 lm	5100 lm		
	4000K	950 lm	1800 lm	2850 lm	3600 lm	4650 lm	5400 lm		
	5000K	1000 lm	1900 lm	3000 lm	3800 lm	4900 lm	5700 lm		
Lumens	11.8+17.7" (300+450mm)		17.7+23.6" (450+600mm)		31.5+39.3" (800+1000mm)		39.3+47.2" (1m + 1.2m)		
DOUBLE	3000K	2600 lm		4400 lm		7800 lm		9550 lm	
	4000K	2750 lm		4650 lm		8250 lm		10,050 lm	
	5000K	2900 lm		4900 lm		8700 lm		10,550 lm	
Lumens	11.8+17.7+23.6" (300+450+600mm)				31.5+39.3+47.2" (800+1000+1200mm)				
TRIPLE	3000K	5300 lm			7650 lm				
	4000K	5600 lm			8050 lm				
	5000K	5900 lm			8450 lm				

ILLUMINANCE CONE DIAGRAM

