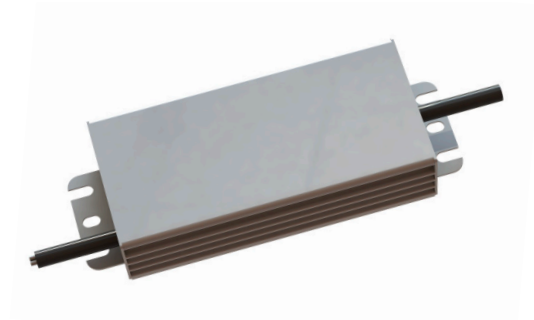




Features and Benefits:

- Constant voltage
- Active PFC Corrected 2-Stage Switch mode
- 100-277V AC (UL)
- 60W max output Power
- 24V DC output voltage
- 5000 mA max output current
- Up to 86% efficiency
- Up to 86% efficiency
- IP67, NEMA4 compliant for dry, damp and wet locations
- 5-year limited warranty



24V DC



5 YEAR
WARRANTY

IP67

PRODUCT INFORMATION

| | |
|-------------------------|---|
| Part Number | PS24-60W-100-277V-Y |
| Rated Input Voltage | 100-277V AC |
| Rated Input Frequency | 50/60 hz |
| AC Input Current | Max. 0.06 A @ 120V AC Max. 0.32 A @ 230V AC Max. 0.27 A @ 277V AC |
| Rated DC Output Voltage | 24V DC |
| Max. DC Output Power | 96W |
| Max. DC Output Current | 4.00 A DC |
| Power Efficiency | |
| Typical Power Factor | 0.90 @ 120V AC 0.90 @ 230V AC 0.90 @ 277V AC |
| Max. Inrush Current | 35 A/3μs 120VAC 75 A/3μs 277V AC |
| IP Rating | IP67 |
| Operating Ambient Temp. | -31° — 122° F -35° — +50° C |
| Lifetime | 50,000 hours @Tc=75° C, 120V, 100% load |
| Dimensions (L x W x H) | 6.22 x 2.40 x 1.49 in. (158 x 61.0 x 37.8 mm) |
| Net Weight | |

STANDARD COMPLIANCE

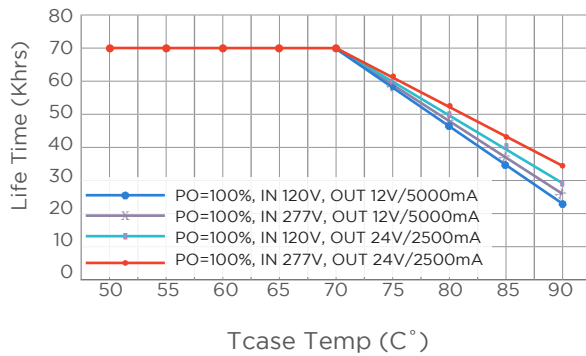
| Safety | Safety Standards |
|--|---|
| UL 8750 UL 879 UL 1310 Class 2 | CSA 22.2 No.107.1 |
| EN61347-1:2007 +A1:2010+A2:2012: EN 61347 -2-13:2014 | |
| EN62493:15 Withstand Voltage | Input to Output 2000V AC (UL), 3750V AC (CE) |
| Isolation Resistance | Inout to Output > 10MΩ, 500V DC @ 35C, 70%RH |
| EMI Standards | |
| EN 61000-4-2 | Electrostatic Discharge (ESD): 8kV air discharge, 4kV contact discharge |
| EN 61000-4-3 | Radio-Frequency Electromagnetic Field Susceptibility Test-RS |
| EN 61000-4-4 | Electrial Fast Transient.Burst-EFT |
| EN 61000-4-5 | Sure Immunity Test: AC Power Line: line to line 4kV line to earth 6kV |
| EN 61000-4-6 | Conducted Radio Frequency Disturbances Test-Cs |
| EN 61547 | Electromagnetic Immunity Requirements Apply to Lighting Equipment |
| FCC | FCC 47CFR Part 15, ANSI C63.4:2009 |
| CE | EN 55015:2013+A1:2015 EN 61000-3-2:2014, EN 61000-3-3:2013 |
| ENERGY STAR | Energy Star transient protection: Ballast or driver shall comply with ANSI/IEEE C62.41.1-2002 and ANSI/IEEE C62.41.2-2002, Category A operation. The line transient shall consist of seven strikes of a 1000KHZ ring wave, 2.5KV, for both common mode and differential mode. |



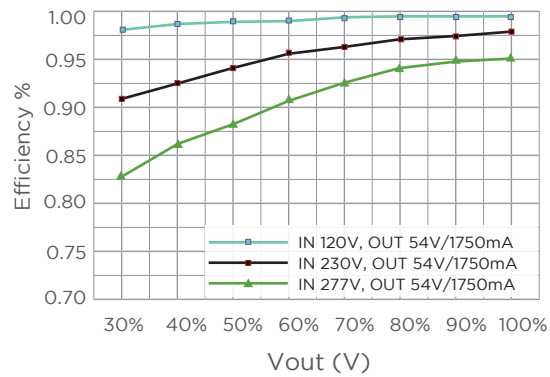
DIMENSIONS

Note: UL certification requires the power supply spacing to other power supplies, transformers, and ballasts shall be at least 1 in. (25.4 mm) from end to end and 4 in. (101.6 mm) from side to side.

Typical Lifetime vs. Tcase Temp



Typical Efficiency vs. Vout at 25°C Ambient Temp



SHIPPING INFORMATION

| Module Type | Specs # of Units | Packaging Quantity | | Carton Weight lb kg | Box Dimensions | | | Carton Dimensions | | |
|-------------|---------------------|--------------------|------------|---------------------------|----------------|---|---|-------------------|---|---|
| | | Per Box | Per Carton | | W | D | H | W | D | H |
| inch mm | | | | | | | | | | |



1. The maximum case temperature Tc shall not exceed 167°F (75°C) when used in end product.
2. These products are intended to be connected to a max. 20 A branch circuit.
3. These products are intended for use in dry and damp locations.