

Light efficiency:

64 Lumen/Watt

Light quality:

CRI: 93.1

Color temperature:

2417 K

Output: 506 lm

Peak: 168 cd

Power: 7.9 W

PF: 1.0



Tracking number: [n/a](#)

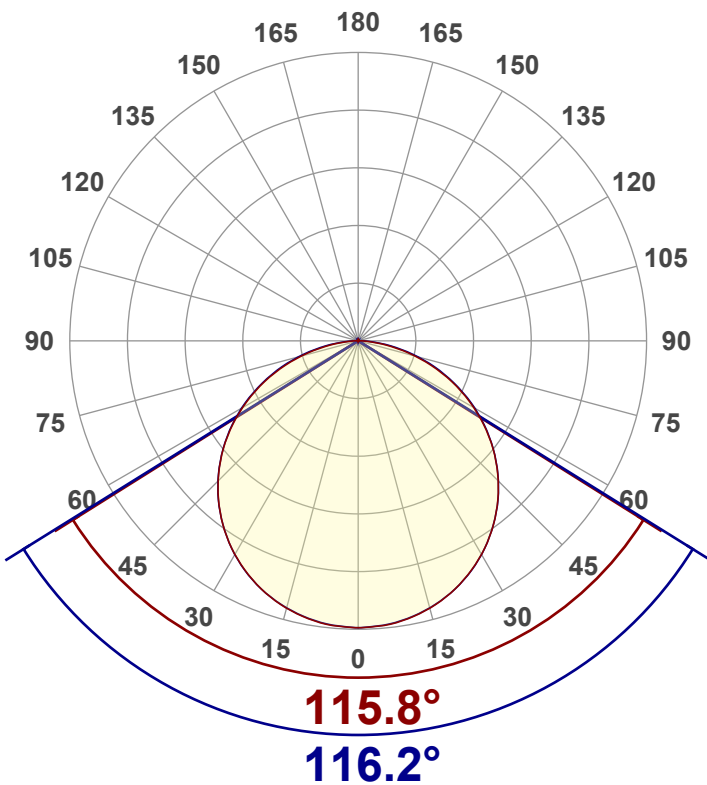
Product name:
RB0WD205.21830-ALLON

Item number:
RB0WD205.21830

Date and time:
2025/5/8 10:34:51

Operator:
bob

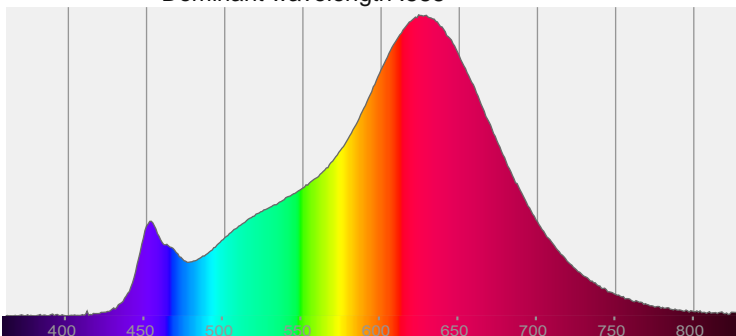
Description:
SIZE:500x10
1800+3000K
LENGTH:0.5M



CIE 1931
x: 0.474
y: 0.397

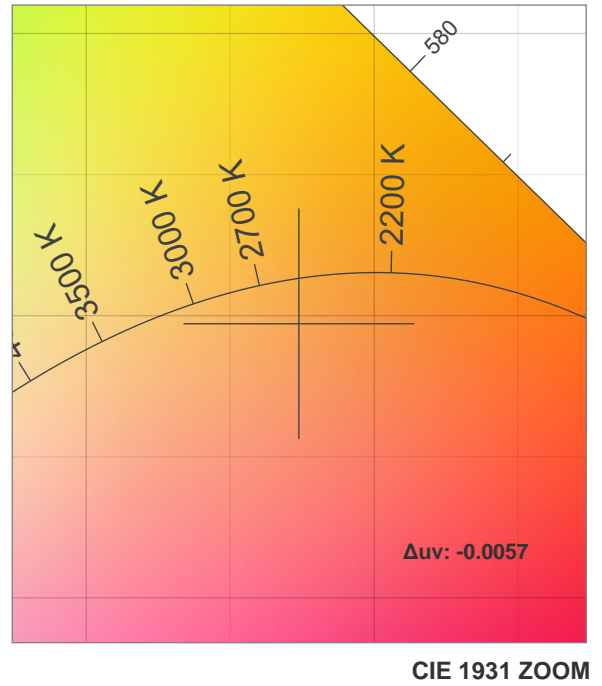
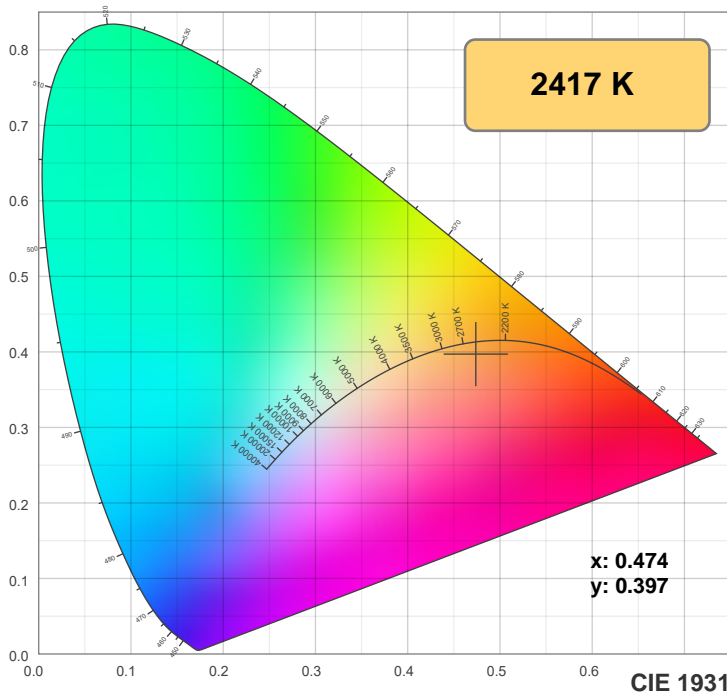
Spectra: Peak wavelength :624

Dominant wavelength :588

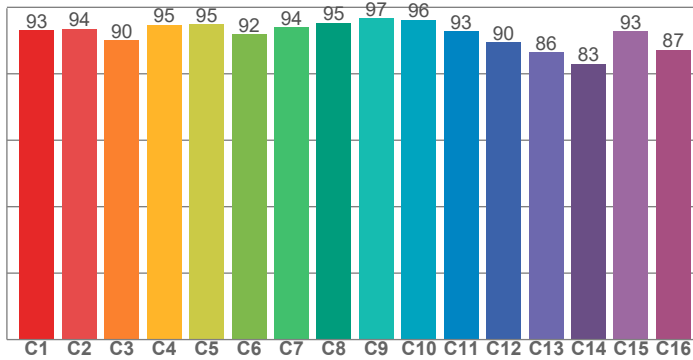


Power

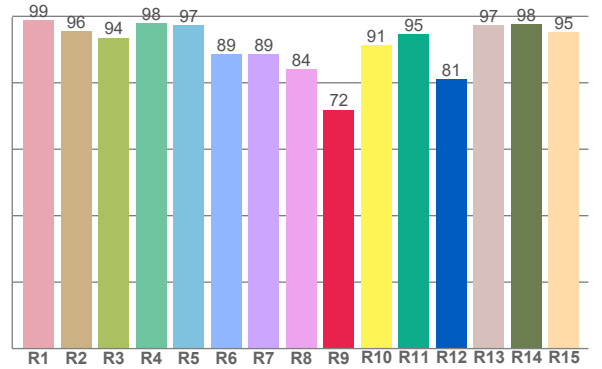
Voltage: 24.0 V
Current: 0.328 A
Frequency: 0 Hz



TM-30: 92.5



CRI: 93.1 (R1-R8)



CRI R values, only R1-R8 are used to calculate final CRI value

R1	R2	R3	R4	R5	R6	R7	R8	R9	R10	R11	R12	R13	R14	R15
98.7	95.6	93.6	98.0	97.4	88.5	88.6	84.2	71.9	91.4	94.6	81.1	97.2	97.7	95.2

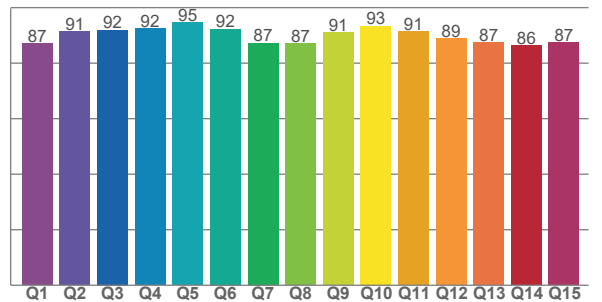
TM30 C values, 16 binned values out of total of 99 C values

C1	C2	C3	C4	C5	C6	C7	C8	C9	C10	C11	C12	C13	C14	C15	C16
93.1	93.5	90.0	94.7	94.9	91.9	94.0	95.4	96.7	96.3	92.8	89.6	86.5	83.1	92.8	87.2

CQS Q values

Q1	Q2	Q3	Q4	Q5	Q6	Q7	Q8	Q9	Q10	Q11	Q12	Q13	Q14	Q15
87.1	91.3	92.0	92.4	94.7	92.2	87.2	87.0	91.0	93.3	91.4	88.9	87.4	86.4	87.5

CQS: 89.4



Color parameters

Color temperature	Color rendering index	Red component	Color fidelity	Color gamut	Color quality scale	Color coordinate cie 1931	Color coordinate cie 1931	Color coordinate	Color coordinate	Color deviation from black body
CCT	CRI	CRI R9	TM30 Rf	TM30 Rg	CQS	x	y	u	v	Δuv
2417 K	93.1	71.9	92.5	102.8	89.4	0.474	0.397	0.278	0.349	-0.0057

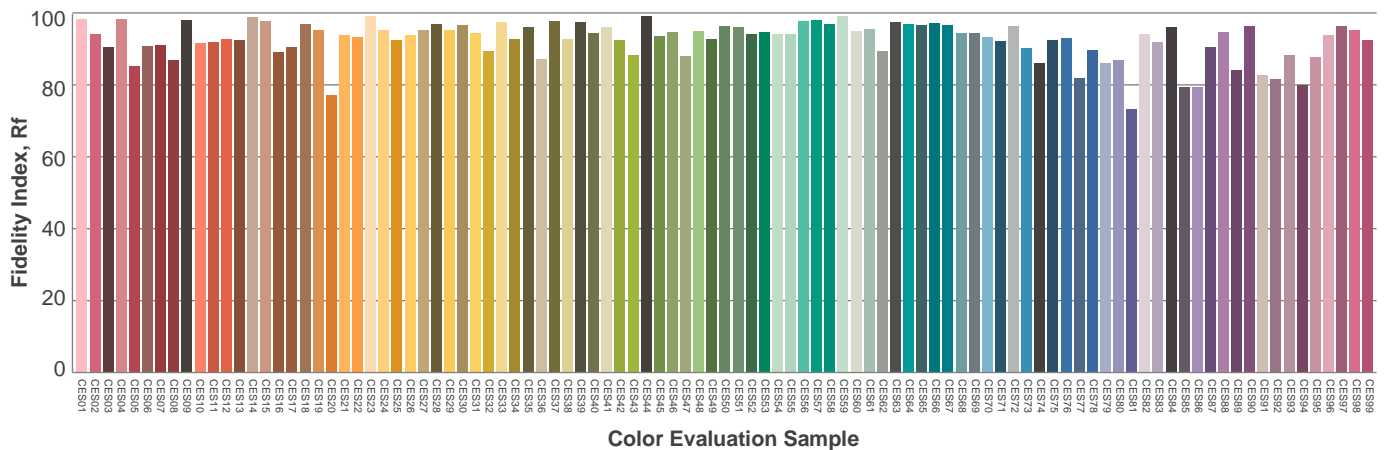
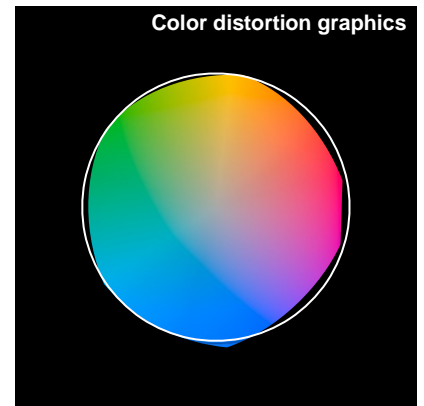
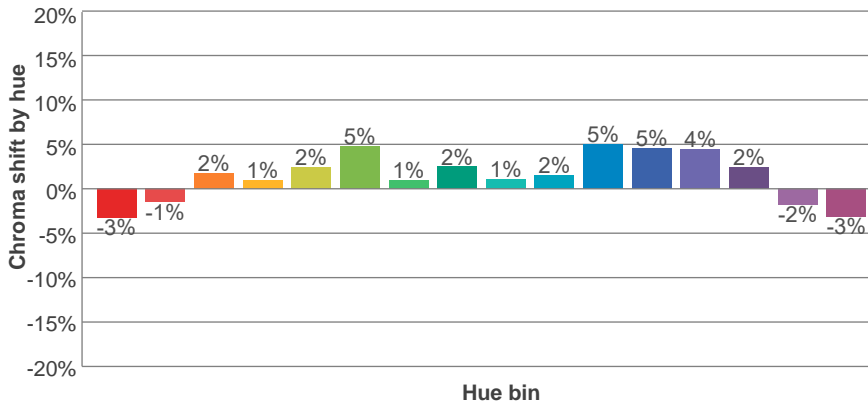
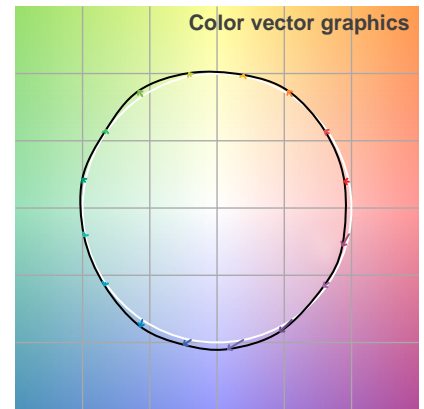
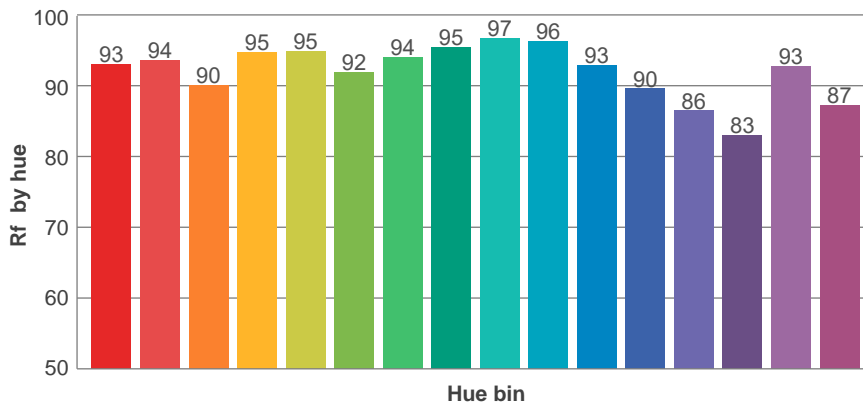
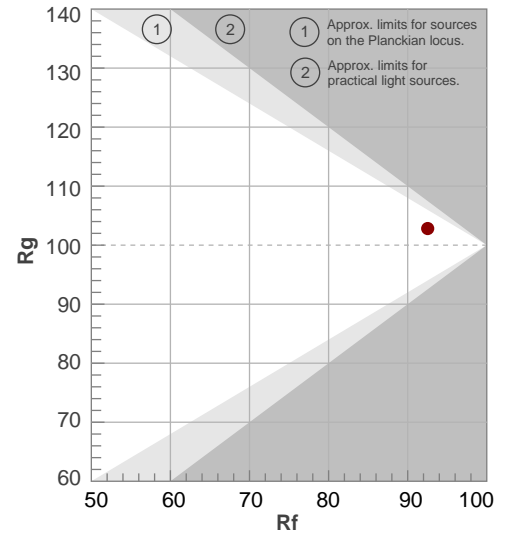
Rf 92.5

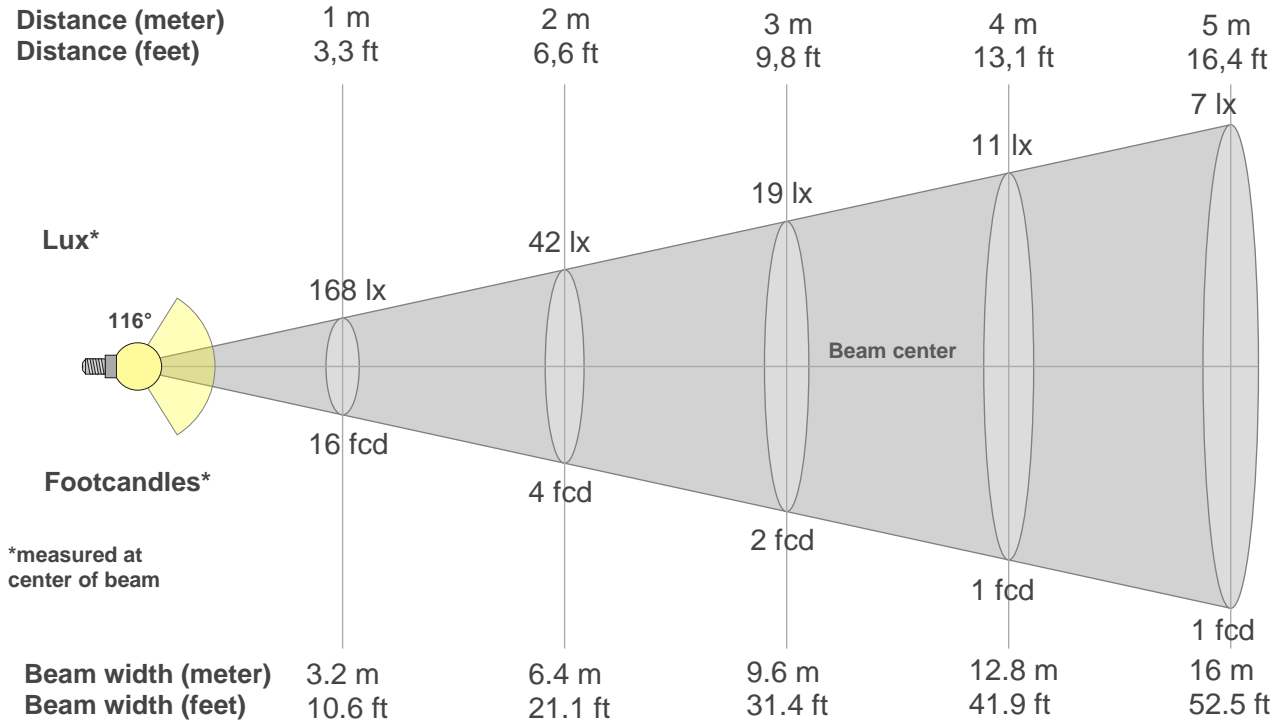
Fidelity index Rf

Rg 102.8

Gamut index Rg

Hue Bin	R _f	Shifts (%)	
		Chroma	Hue
1	93	-3%	1%
2	94	-1%	3%
3	90	2%	4%
4	95	1%	0%
5	95	2%	1%
6	92	5%	0%
7	94	1%	-2%
8	95	2%	-2%
9	97	1%	1%
10	96	2%	1%
11	93	5%	2%
12	90	5%	-4%
13	86	4%	-12%
14	83	2%	-12%
15	93	-2%	-5%
16	87	-3%	-9%





Beam intensities from 1-20m

1m	2m	3m	4m	5m	6m	7m	8m	9m	10m	11m	12m	13m	14m	15m	16m	17m	18m	19m	20m
3.3ft	6.6ft	9.8ft	13.1ft	16.4ft	19.7ft	23ft	26.2ft	29.5ft	32.8ft	36.1ft	39.4ft	42.7ft	45.9ft	49.2ft	52.5ft	55.8ft	59.1ft	62.3ft	65.6ft
168lx	42lx	19lx	11lx	7lx	5lx	3lx	3lx	2lx	2lx	1lx	1lx	1lx	1lx	1lx	1lx	1lx	1lx	0lx	0lx
15.6fcd	3.9fcd	1.7fcd	1fcd	0.6fcd	0.4fcd	0.3fcd	0.2fcd	0.2fcd	0.2fcd	0.1fcd	0.1fcd	0.1fcd	0.1fcd	0.1fcd	0.1fcd	0.1fcd	0fcd	0fcd	0fcd

Intensities in 0° c-plane

0°	5°	10°	15°	20°	25°	30°	35°	40°	45°	50°	55°	60°	65°	70°	75°	80°	85°	90°	95°
168	168	166	162	158	152	145	136	127	116	105	92	78	64	50	35	21	9	2	1
100%	100%	98%	96%	94%	90%	86%	81%	75%	69%	62%	55%	47%	38%	29%	21%	12%	5%	1%	0%

Intensities in 90° c-plane

0°	5°	10°	15°	20°	25°	30°	35°	40°	45°	50°	55°	60°	65°	70°	75°	80°	85°	90°	95°
168	168	166	162	158	152	145	136	127	116	105	92	79	65	51	36	23	11	3	0
100%	100%	98%	96%	94%	90%	86%	81%	75%	69%	62%	55%	47%	39%	30%	22%	13%	6%	2%	0%

Intensities in 180° c-plane

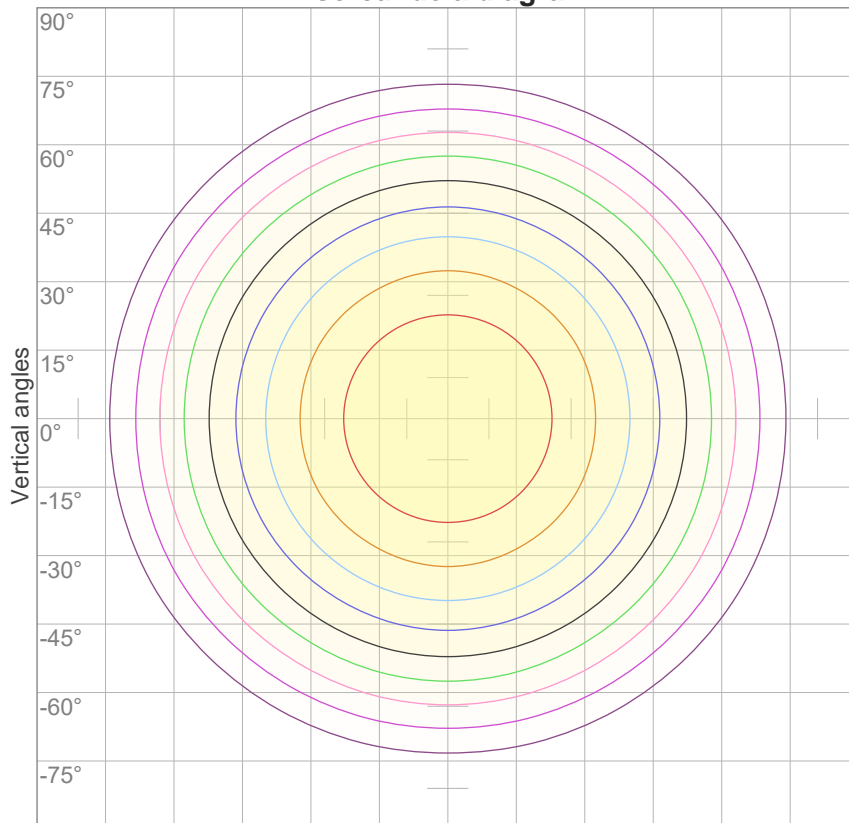
0°	5°	10°	15°	20°	25°	30°	35°	40°	45°	50°	55°	60°	65°	70°	75°	80°	85°	90°	95°
168	168	166	162	158	152	145	136	127	116	105	92	78	64	50	35	21	9	2	1
100%	100%	98%	96%	94%	90%	86%	81%	75%	69%	62%	55%	47%	38%	29%	21%	12%	5%	1%	0%

Intensities in 270° c-plane

0°	5°	10°	15°	20°	25°	30°	35°	40°	45°	50°	55°	60°	65°	70°	75°	80°	85°	90°	95°
168	168	166	162	158	152	145	136	127	116	105	92	79	65	51	36	23	11	3	0
100%	100%	98%	96%	94%	90%	86%	81%	75%	69%	62%	55%	47%	39%	30%	22%	13%	6%	2%	0%

Beam angle 50%	Field angle 10%	Cutoff angle 2,5%	Intensity ratio in 120° cone	Intensity ratio in 90° cone
116°	164.2°	177.8°	77.0%	51.9%

iso-candela diagram



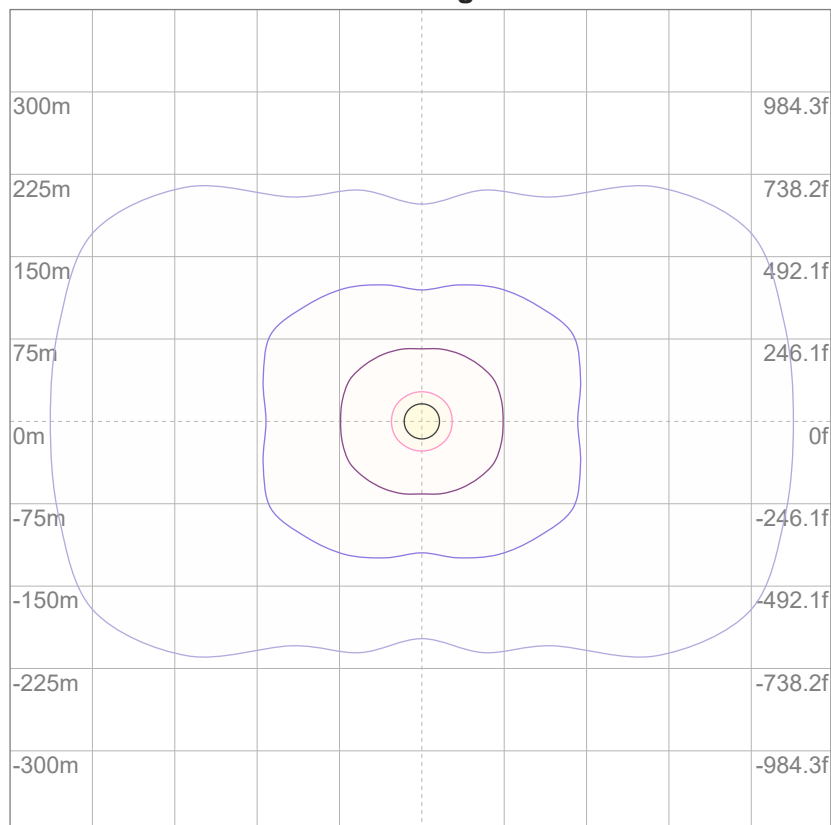
10%	17 cd
20%	34 cd
30%	51 cd
40%	67 cd
50%	84 cd
60%	101 cd
70%	118 cd
80%	135 cd
90%	152 cd

Conditions:

Number of c-planes: 12

Candela at center: 168 cd

iso-lux diagram



3%	50.5m lx
5%	84.2m lx
10%	0.168 lx
30%	0.505 lx
50%	0.842 lx

Conditions:

Number of c-planes: 12

Lux at center: 1.68 lx

*Lux distribution on a surface
when lamp is mounted at 10
meters from the surface.*

Glare evaluation according to UGR

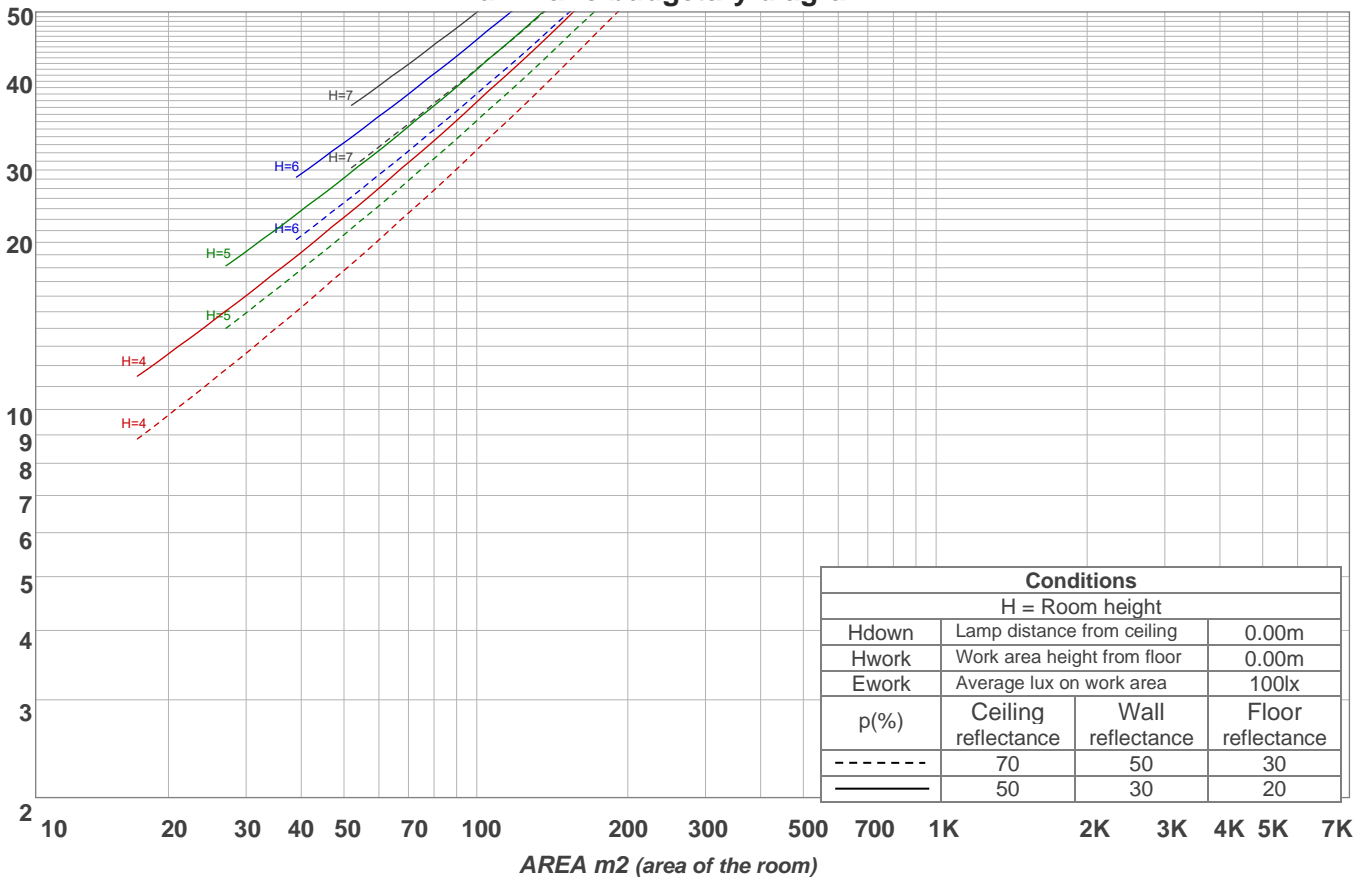
p Ceiling		70	70	50	50	30	70	70	50	50	30
p Walls		50	30	50	30	30	50	30	50	30	30
p Floor		20	20	20	20	20	20	20	20	20	20
Room size X Y		Viewing direction at right angles to lamp axis					Viewing direction parallel to lamp axis				
2H	2H	23.5	24.7	23.7	25.0	25.3	24.2	25.5	24.5	25.8	26.0
	3H	24.7	26.0	25.1	26.3	26.5	25.8	27.1	26.2	27.4	27.6
	4H	25.2	26.4	25.6	26.7	27.0	26.5	27.7	26.9	28.0	28.3
	6H	25.6	26.7	25.9	26.9	27.3	27.1	28.2	27.4	28.4	28.8
	8H	25.6	26.7	26.0	27.0	27.4	27.3	28.3	27.6	28.6	29.0
	12H	25.6	26.7	26.0	27.0	27.5	27.4	28.4	27.7	28.7	29.2
4H	2H	24.1	25.3	24.5	25.6	25.9	24.7	25.9	25.1	26.2	26.5
	3H	25.6	26.7	26.0	27.0	27.5	26.6	27.6	26.9	27.9	28.4
	4H	26.2	27.1	26.6	27.5	28.1	27.3	28.2	27.7	28.6	29.2
	6H	26.6	27.4	27.1	27.8	28.2	27.9	28.8	28.4	29.2	29.6
	8H	26.7	27.5	27.2	27.9	28.2	28.1	29.0	28.7	29.3	29.7
	12H	26.7	27.4	27.2	27.8	28.3	28.3	29.0	28.8	29.4	29.9
8H	4H	26.5	27.3	27.0	27.7	28.1	27.5	28.3	28.0	28.7	29.1
	6H	27.0	27.6	27.5	28.1	28.6	28.2	28.9	28.7	29.3	29.9
	8H	27.2	27.7	27.7	28.2	28.9	28.6	29.1	29.1	29.6	30.3
	12H	27.3	27.7	27.8	28.2	28.9	28.8	29.3	29.4	29.8	30.4
12H	4H	26.5	27.2	27.0	27.6	28.1	27.5	28.1	28.0	28.6	29.1
	6H	27.1	27.6	27.6	28.1	28.8	28.3	28.8	28.8	29.4	30.0
	8H	27.3	27.7	27.8	28.2	28.9	28.6	29.1	29.2	29.6	30.2
Variation of the observer position for the luminaire distance S											
S = 1.0H		0.1 / -0.1					0.1 / -0.1				
S = 1.5H		0.2 / -0.3					0.1 / -0.2				
S = 2.0H		0.5 / -0.7					0.5 / -0.6				
CIE 117-1995. Corrected glare indices referring to 506 lm total luminous flux											

Coefficients of Utilization

Ceiling reflectance	80				70				50			30			10			0
Wall reflectance	70	50	30	10	70	50	30	10	50	30	10	50	30	10	50	30	10	0
Floor reflectance	20	20	20	20	20	20	20	20	20	20	20	20	20	20	20	20	20	0
RCR	(RCR: Room Cavity Ratio) Room Values are expressed as percentage of Lumens delivered to the task surface																	
0	119	119	119	119	116	116	116	116	111	111	111	106	106	106	102	102	102	99
1	108	103	99	95	105	101	97	93	97	93	90	93	90	87	89	87	85	82
2	98	90	83	77	95	88	81	76	84	79	74	81	76	72	78	74	70	68
3	89	79	70	63	87	77	69	63	74	67	62	71	65	61	68	63	59	57
4	82	69	60	54	79	68	60	53	65	58	52	63	57	52	61	55	51	49
5	75	62	53	46	73	61	52	46	59	51	45	56	50	45	55	49	44	42
6	69	56	47	40	67	55	46	40	53	45	39	51	44	39	49	43	39	36
7	64	50	41	35	62	50	41	35	48	40	35	46	40	34	45	39	34	32
8	60	46	37	31	58	45	37	31	44	36	31	42	36	31	41	35	31	29
9	56	42	34	28	54	41	34	28	40	33	28	39	32	28	38	32	28	26
10	52	39	31	25	51	38	31	25	37	30	25	36	30	25	35	29	25	23

LAMPS (number of lamps)

Luminaire budgetary diagram



Zonal Lumen Summary

0°-10°	10°-20°	20°-30°	30°-40°	40°-50°	50°-60°	60°-70°	70°-80°	80°-90°
16.0 lm	45.9 lm	70.1 lm	85.5 lm	89.9 lm	82.4 lm	64.0 lm	38.1 lm	11.7 lm
90°-100°	100°-110°	110°-120°	120°-130°	130°-140°	140°-150°	150°-160°	160°-170°	170°-180°
0.834 lm	0.320 lm	0.332 lm	0.324 lm	0.321 lm	0.309 lm	0.252 lm	0.160 lm	0.055 lm

LCS table

BUG rating:	B0 U1 G0	
Forward light	Lumens	Lumens %
Low(0-30):	65.9	13%
Medium(30-60):	128.7	25.4%
High(60-80):	51	10.1%
Very high(80-90):	6.1	1.2%
Back light		
Low(0-30):	65.9	13%
Medium(30-60):	128.7	25.4%
High(60-80):	51	10.1%
Very high(80-90):	6.1	1.2%
Uplight		
Low(90-100):	1.1	0.2%
High(100-180):	2.1	0.4%

LCS graph

