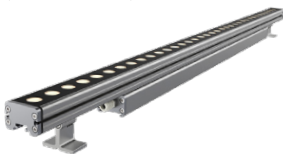




ARMOR SERIES WALL GRAZERS & WASHERS

AC MINI
(driver on board)



Available Wattages / Lengths:
9 W / 12.32 in. (313 mm)
12 W / 16.1 in. (410 mm)
18 W / 23.8 in. (605 mm)
27 W / 35.43 in. (900 mm)
36 W / 46.9 in. (1190 mm)

Beam Angles:
10x10°, 20x20°, 25x25°,
50x50°, 10x60°

RGBW AC MINI
(driver on board)



Available Wattages / Lengths:
20 W / 16.1 in. (410 mm)
30 W / 23.8 in. (605 mm)
45 W / 35.4 in. (900 mm)
60 W / 47.2 in. (1190 mm)

Beam Angles: 15x15°, 25x25°,
35x35°, 50x50°

FORTE LINEAR



Available Wattages / Lengths:
33 W / 13 in. (330 mm)
52 W / 23.6 in. (600 mm)
84 W / 37.2 in. (945 mm)

Available Beam Angles:
15x15°, 25x25°, 45x45°,
70x70°, 15x45°

FORTE LINEAR RGBW



Available Wattages / Lengths:
30 W / 13 in. (330 mm)
60 W / 23.6 in. (600 mm)
98 W / 37.2 in. (945 mm)

Available Beam Angles:
20x20°, 25x25°, 30x30°, 40x40°,
65x65°, 20x45°

MINI



Available Wattages / Lengths:
U.S. Version:
6 W / 8.5 in. (215 mm)
12 W / 16.1 in. (410 mm)
18 W / 23.8 in. (605 mm)
36 W / 46.9 in. (1190 mm)

International Version:
5 W / 7.3 in. (185 mm)
15 W / 19.7 in. (500 mm)
30 W / 39.4 in. (1000 mm)

Available Beam Angles:
15x15°, 20x20°, 35x35°,
50x50°, 10x40°

RGBW MINI



Available Wattages / Lengths:
14 W / 12.3 in. (313 mm)
24 W / 19.7 in. (500 mm)
30 W / 23.8 in. (605 mm)
48 W / 39.4 in. (1000 mm)
60 W / 47.2 in. (1190 mm)

Available Beam Angles:
15x15°, 25x25°, 35x35°

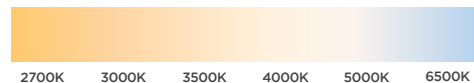
NANO



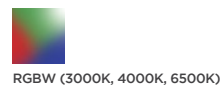
Available Wattages / Lengths:
3 W / 7.2 in. (182 mm)
9 W / 19.7 in. (500 mm)
18 W / 39.4 in. (1000 mm)

Available Beam Angles:
30x30°, 55x55°, 25x35°

AC MINI/MINI/NANO/FORTE



RGBW MINI & RGBW AC MINI



RGBW (3000K, 4000K, 6500K)

FORTE LINEAR RGBW



RGBW (3000K, 4000K, 6000K)

CERTIFICATIONS:

NANO, MINI, RGBW MINI: AC MINI, RGBW AC MINI:

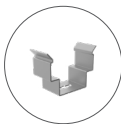


FORTE



MOUNTING ACCESSORIES

Note: Louvers and Glare Shield are available. See specification sheets for more details.



SNAP-IN CLIP*
For narrow installations where mounting clips need to be installed first



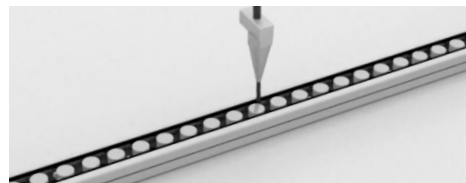
MOUNTING ARMS
Adjustable length between wall and fixture
Small Mounting Arm:
6-9 in. (152-229 mm)
Large Mounting Arm:
14-22 in. (356-559 mm)



TILTABLE STAND*
For adjustable mounting angles up to 140°



LARGE TILTABLE STAND**
For adjustable mounting angles up to 180°



All Armor Series Fixtures are Protected with our Proprietary **Gel-Flush™ Technology**:

A special Dow Corning gel is injected throughout each fixture before we install the lens covers and end caps. The fixture is then set aside for a 24-hour curing period to seal the entire unit against the elements.