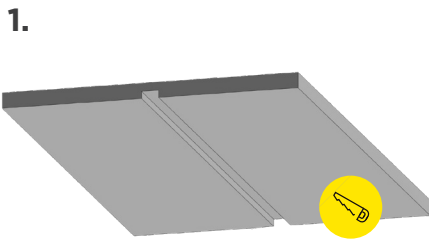
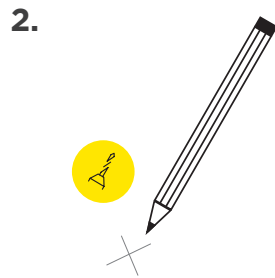


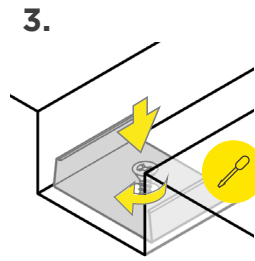
**NOTE:** End caps each add 7.5 mm to surface of the fixture (5 mm to recessed mounting space).



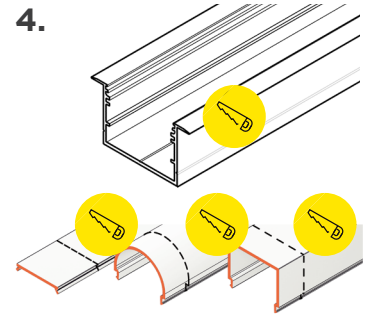
1. Measure the size of the channel and mounting clips and cut a recess into the surface to match the size of the channel. (Recommended width of 38 mm and depth of 25 mm.)



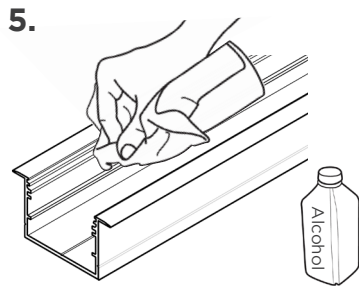
2. Measure and mark the desired location of the mounting clips. Drill a pilot hole for mounting clip fasteners.



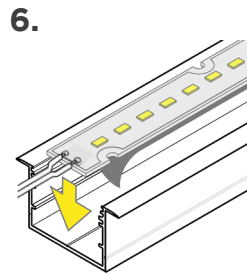
3. Screw the fasteners through the mounting clips to fix them in place on the surface.



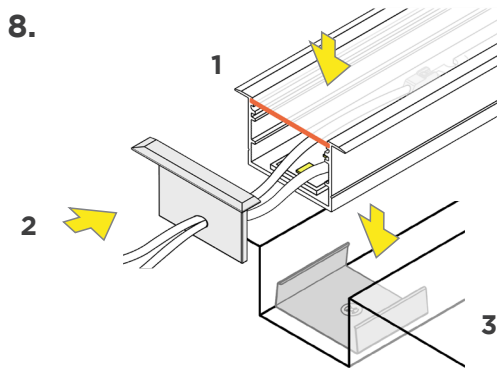
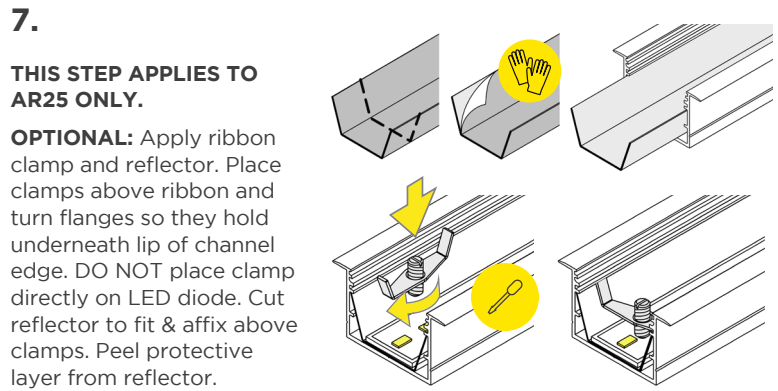
4. Cut channel and lens to desired (equal) lengths.



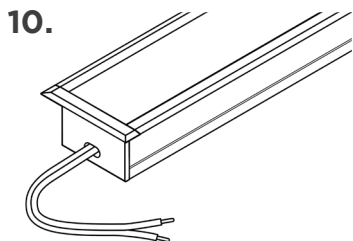
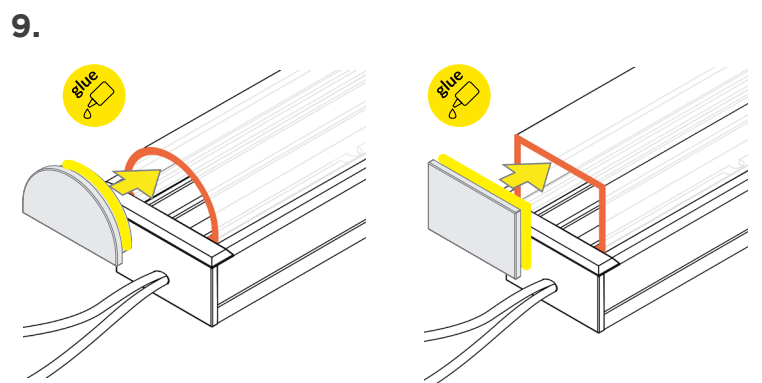
5. Clean the inside surface of the channel of dust and debris with rubbing alcohol. Dry.



6. Apply RibbonLyte. Make all necessary electrical connections.



8. Attach lens by sliding or snapping into place. Attach end caps. Align the channel above the mounting clips & push down to snap into place.



10. Fixture installation complete.

**NOTE 1:** In lieu of mounting clips, you can apply liquid adhesive to sides and back of recessed surface or attach spring clips to channel, push channel through recess and deploy spring clips.

**NOTE 2:** When using corner connectors, hold connector in desired place. Slide mounting clip part way into each side of channel connector base and screw fasteners through the mounting clips to fix them in place. Then join main channel.

