



AR5 CHANNEL FIXTURE INSTALLATION GUIDE



TECHNICAL SUPPORT
(+1) 212 629 6830 *301
Tech@GENLEDBrands.com



U.S. PRICING & SALES SUPPORT
(+1) 212 629 6830 *300
Sales-US@GENLEDBrands.com

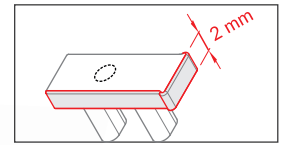


U.S. CUSTOMER SERVICE
(+1) 212 629 6830 *304
CustomerService@GENLEDBrands.com

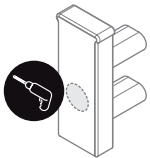
Our US team is in place to answer all of your product questions and help with installations.

NOTE:

End caps are marked with a spot to bore holes for power supply. Each end cap adds 2 mm to the length of the fixture. This fixture offers the possibility of curved mounting with a minimum bend radius of 250 mm.

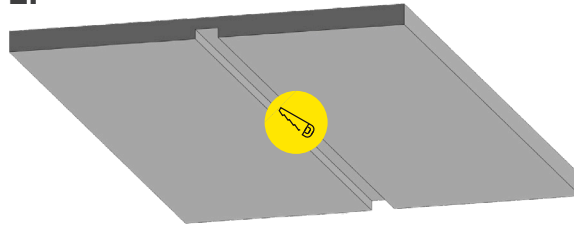


1.



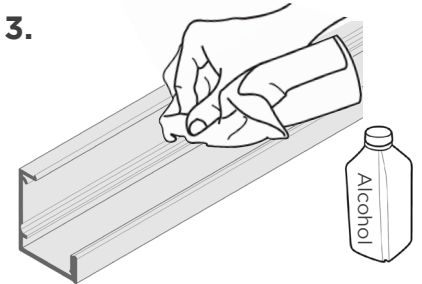
Pre-drill holes in the end caps for wire pass through.

2.



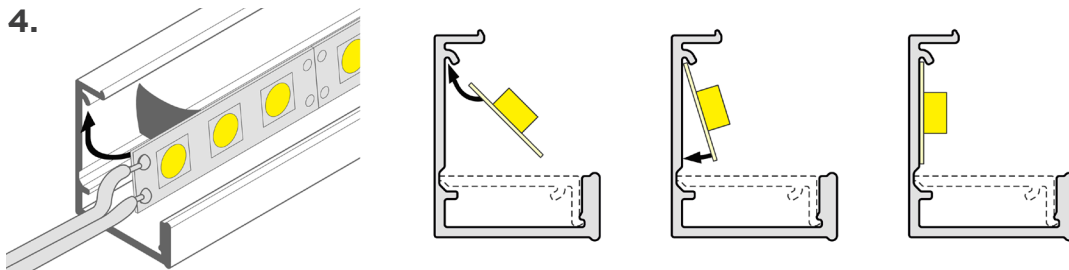
Measure the size of the channel and cut a recess into the surface to match the size of the channel. *Note: Add 1 mm per meter of the fixture to the mounting space to accommodate minor expansion when using higher wattages.

3.



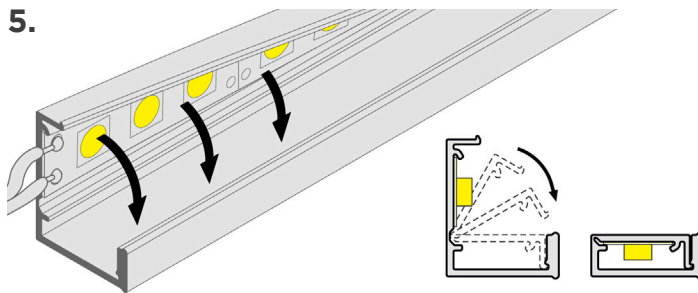
This fixture opens like a case, with the mounting surface inside the "lid." Do not close "lid" until instructed. Clean the inside surface of the channel of dust and debris with rubbing alcohol. Dry.

4.



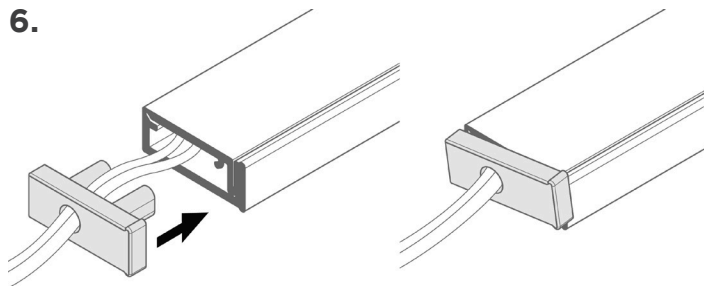
Apply RibbonLyte to "lid" of channel. Make all necessary electrical connections through end caps. DO NOT attach end caps yet.

5.



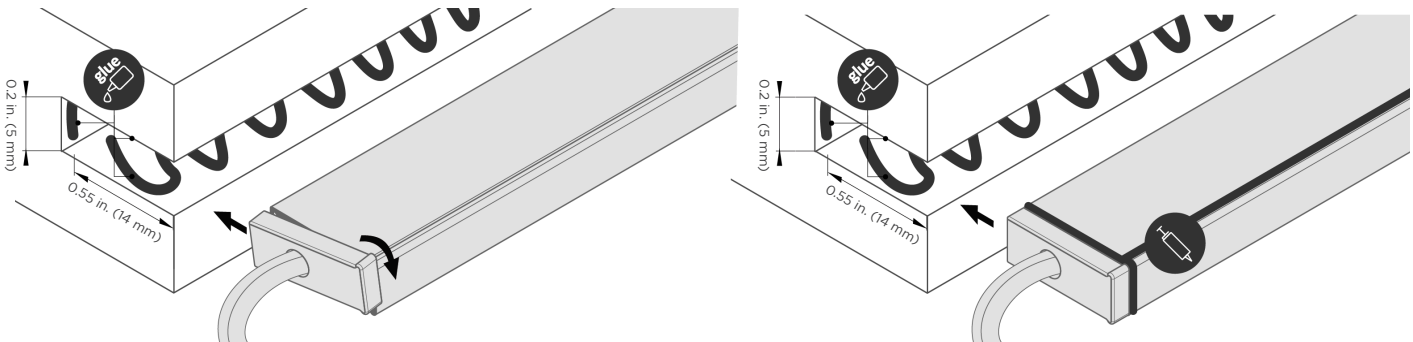
Attach lens by snapping "lid" into place.

6.



Leave end caps slightly tilted before the final mounting.

7.



Apply glue to bottom and back of recessed surface. In areas of high humidity, secure connections with silicone. Tighten end cap and insert into recessed surface. Fixture installation complete.