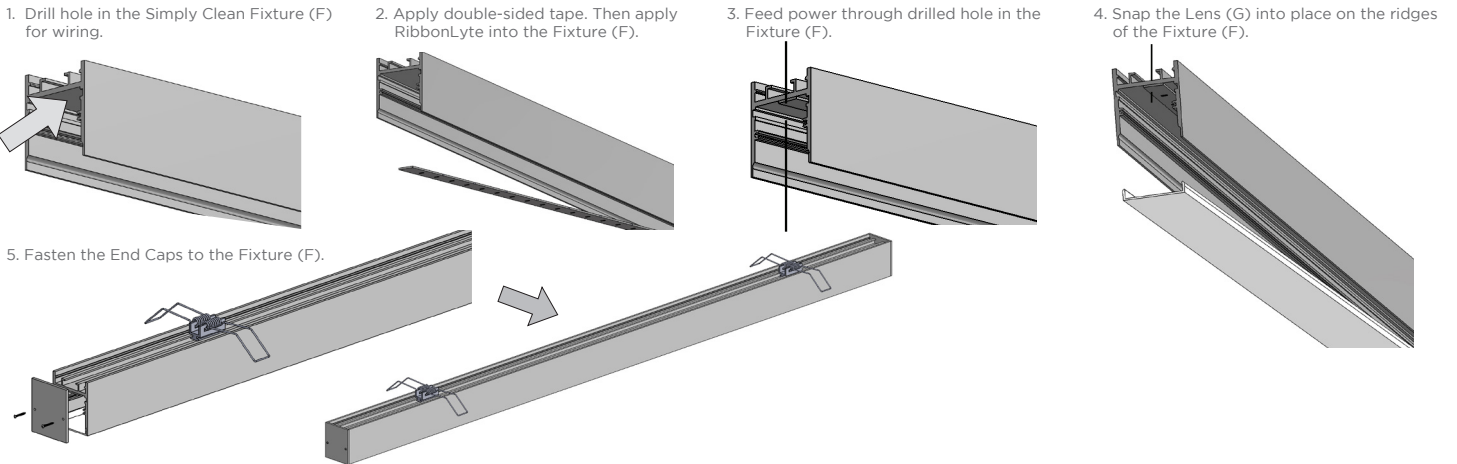


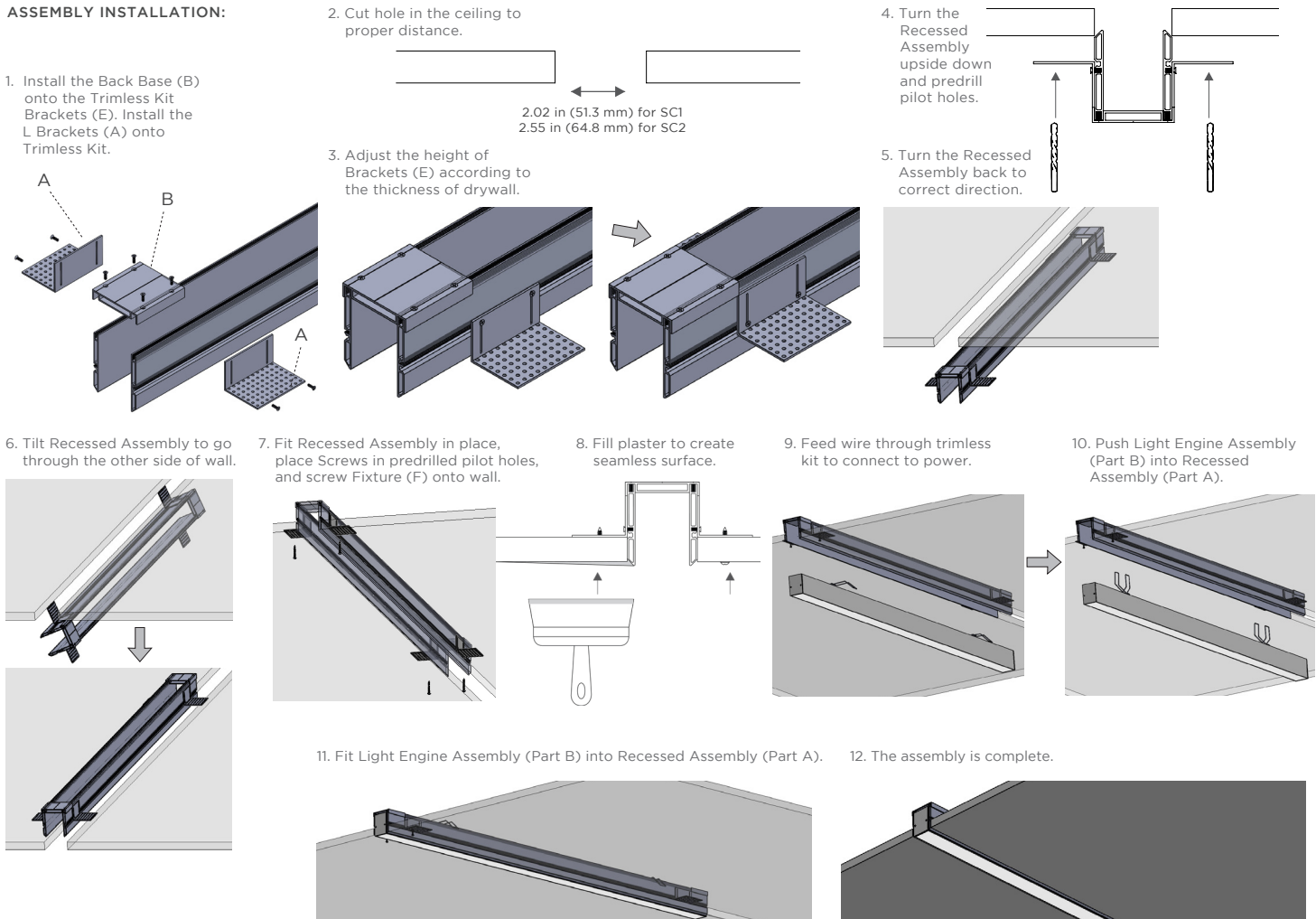
COMPONENTS:



FIXTURE ASSEMBLY:

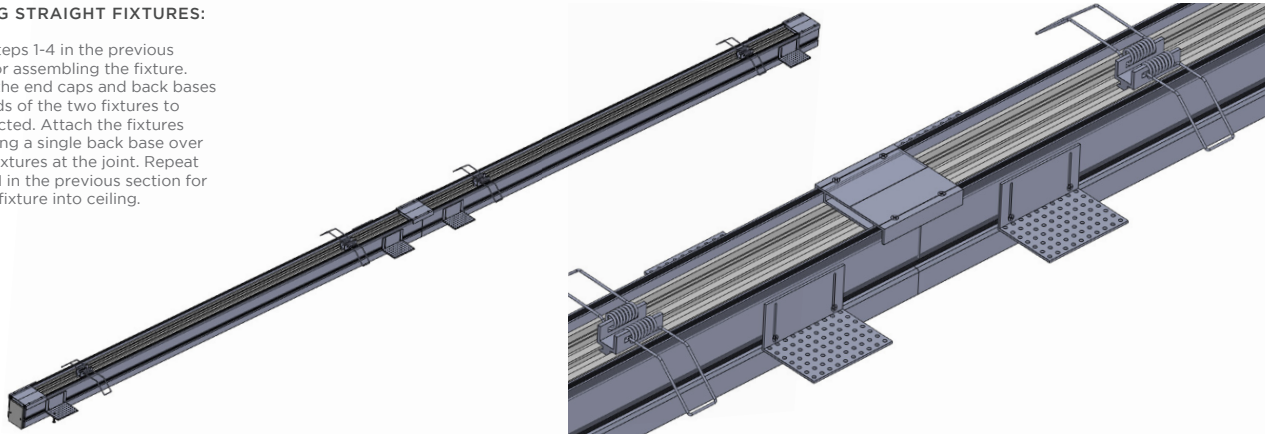


ASSEMBLY INSTALLATION:



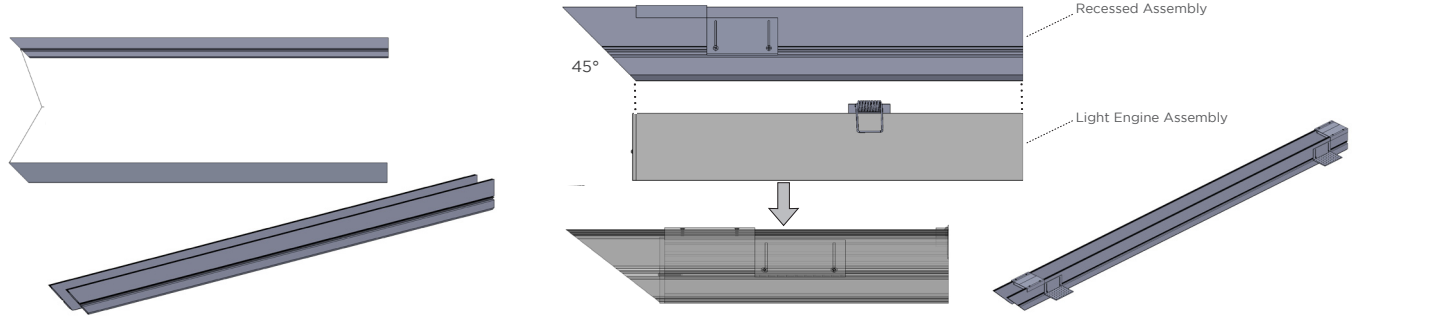
CONNECTING STRAIGHT FIXTURES:

1. Repeat Steps 1-4 in the previous section for assembling the fixture. Remove the end caps and back bases at the ends of the two fixtures to be connected. Attach the fixtures by installing a single back base over the two fixtures at the joint. Repeat Steps 4-11 in the previous section for inserting fixture into ceiling.

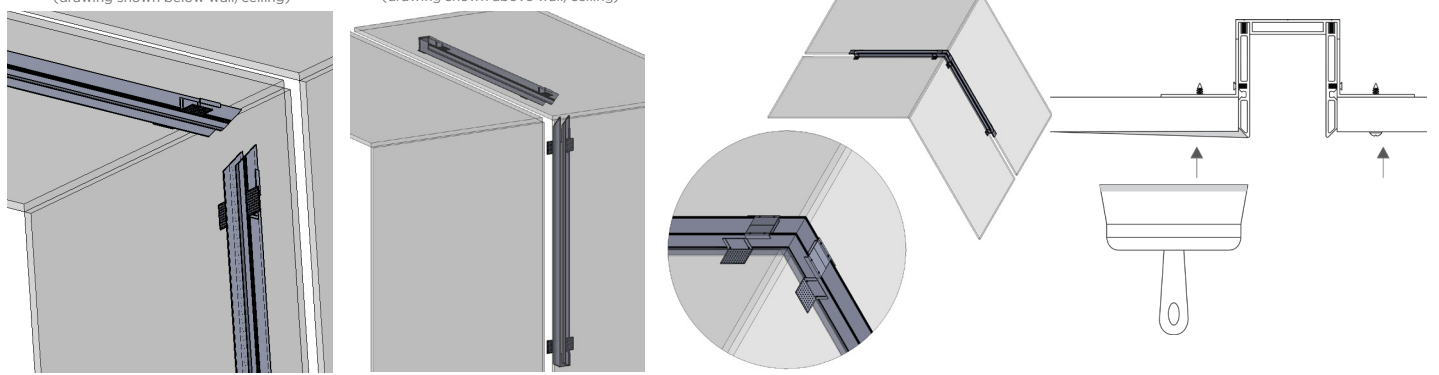


CONNECTING 2 FIXTURES AT CORNERS:

1. Miter the two Trimless Kit Brackets (E) at 45 degree angles, for both sets of fixtures. Do not miter the Light Engine Assembly (F).
2. Reassemble the Trimless Kit (E) to the Simply Clean Fixture (F) making sure to align the end of the Fixture (F) to the inside edge of the mitered Brackets (E).



3. Place the two Fixtures (F) into their respective recess. (drawing shown below wall/ceiling)
4. Position the two Fixtures (F) into the mitered corners.
5. Fill plaster to create seamless surface.



6. Connect Light Engine Assembly (Part B) to power. Fit Light Engine Assembly into Recessed Assembly (Part A).
7. The Fixture connection is complete.

