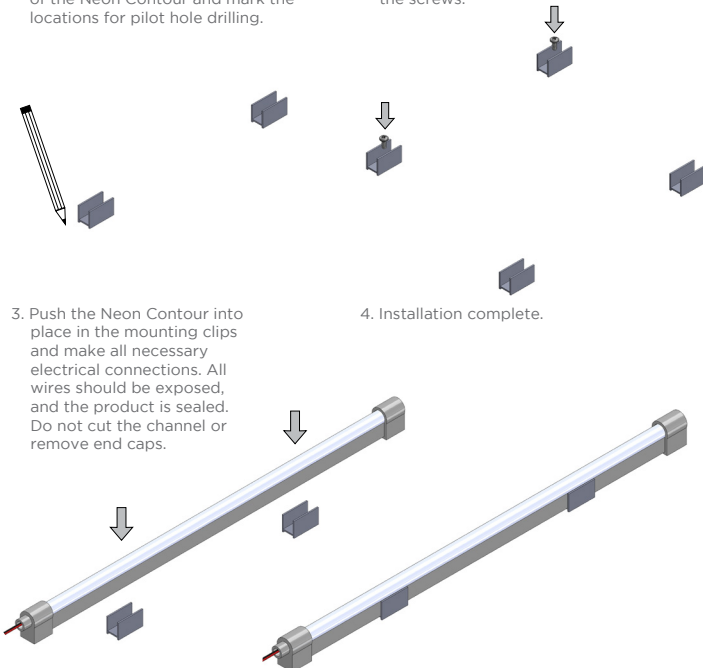


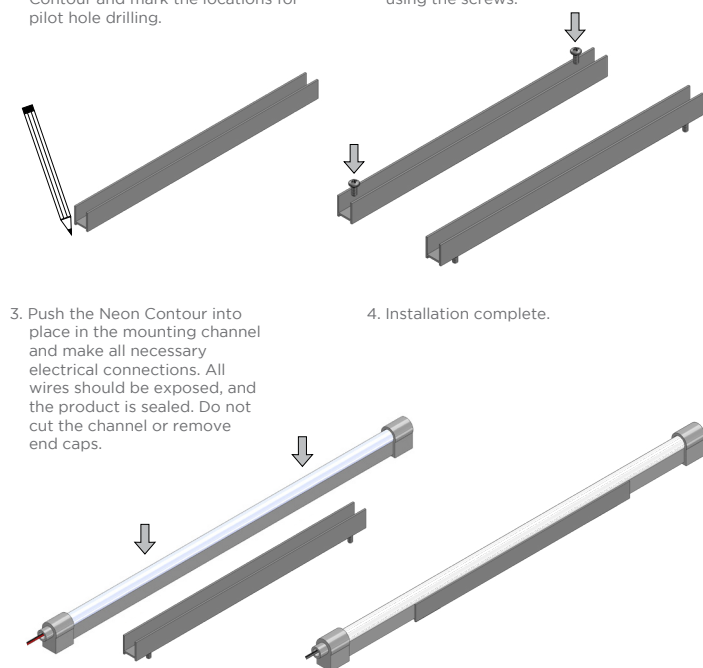
CONTOUR W/ MOUNTING CLIPS:

1. Place the mounting clips every 6 in. (150 mm) along the desired path of the Neon Contour and mark the locations for pilot hole drilling.
2. Drill pilot holes and then fasten the mounting clips to the surface using the screws.



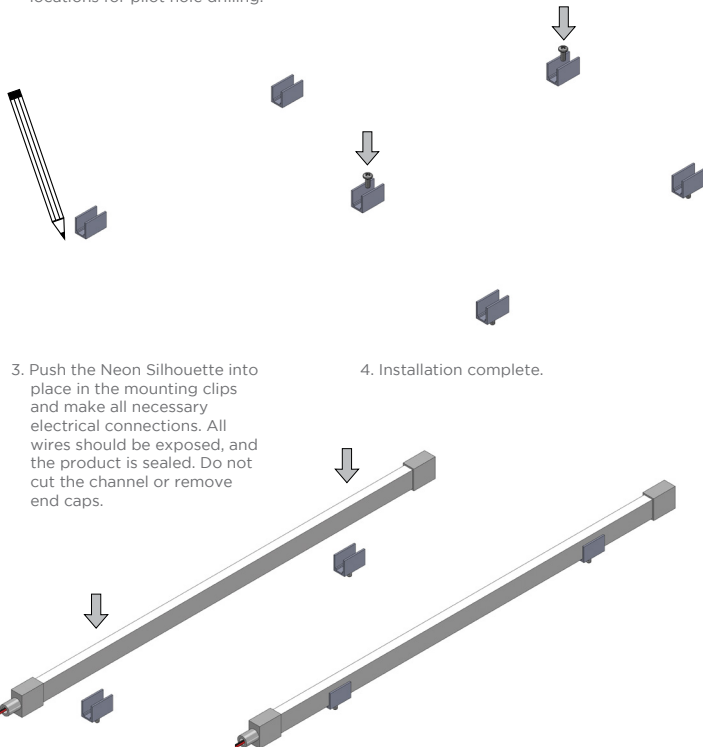
CONTOUR W/ MOUNTING CHANNEL:

1. Place the mounting channel along the desired path of the Neon Contour and mark the locations for pilot hole drilling.
2. Drill pilot holes and then fasten the mounting channel to the surface using the screws.



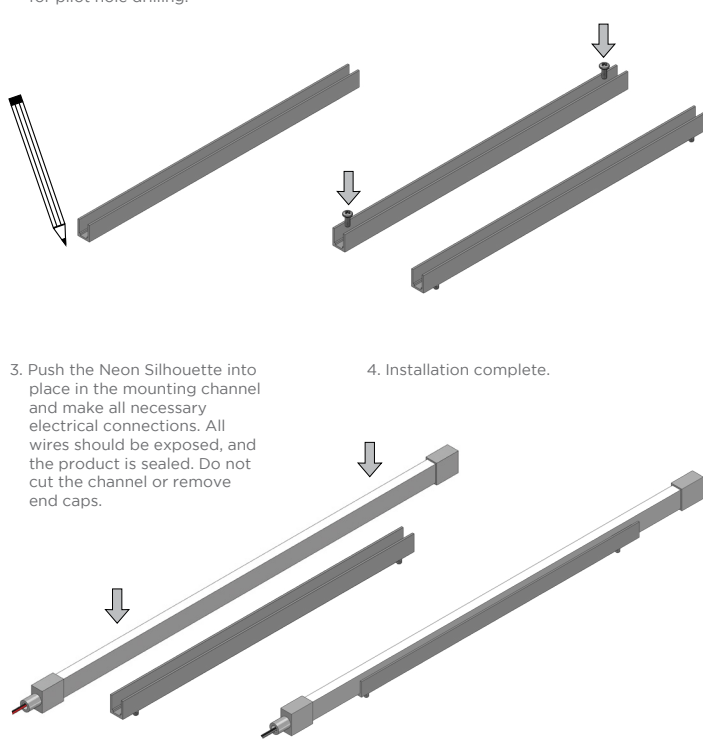
SILHOUETTE W/ MOUNTING CLIPS:

1. Place the mounting clips along the desired path of the Neon Silhouette every 6 in. (150 mm) and mark the locations for pilot hole drilling.
2. Drill pilot holes and then fasten the mounting clips to the surface using the screws.



SILHOUETTE W/ MOUNTING CHANNEL:

1. Place the mounting channel along the desired path of the Neon Silhouette and mark the locations for pilot hole drilling.
2. Drill pilot holes and then fasten the mounting channel to the surface using the screws.



NOTE: Longer LED neon installations require at least two people.
Support LED neon throughout installation to avoid bending fixtures beyond the listed minimum bending radius.