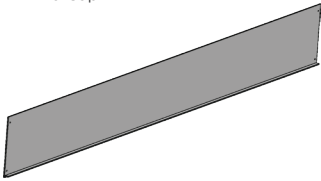
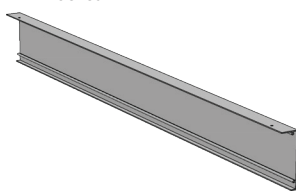




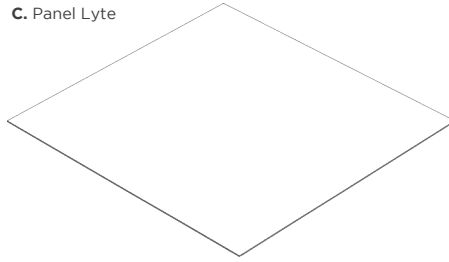
A. End Cap



B. Bracket



C. Panel Lyte



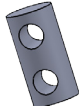
D. Screws



E. Cable Gripper



F. 4-Terminal Set Gripper

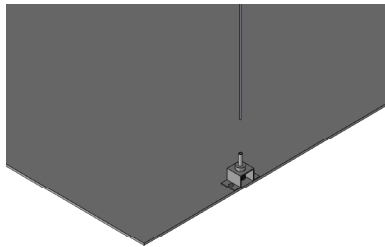


G. Hanging Flange

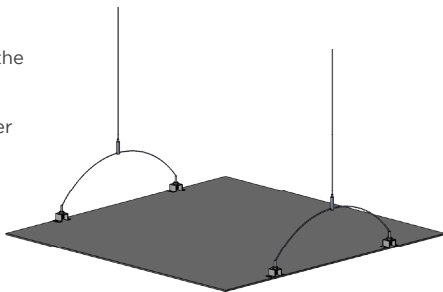


HUNG PANEL LYTE INSTALLATION

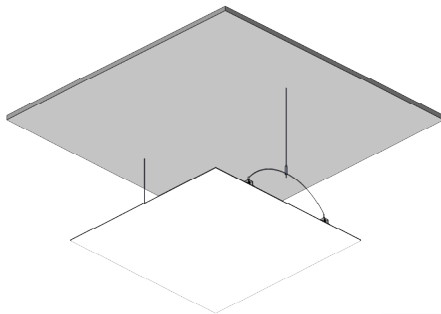
1. Insert the Suspension Cable into the Cable Gripper (E) mounted on the top of the Panel Lyte (C). Press down and pull to desired length.



2. Feed the ends of the Suspension Cable through the "Y" Connection Gripper and fasten to the opposite side.

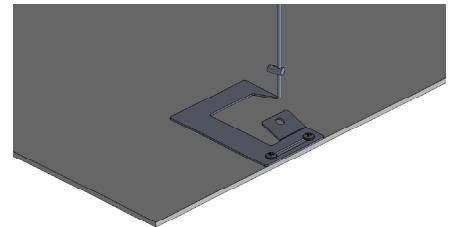


3. Mount to ceiling using the mounting guide.

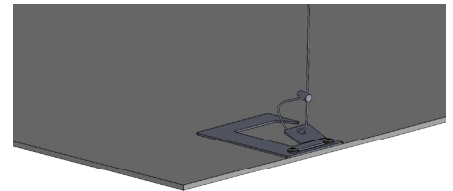


HUNG FLANGE PANEL LYTE INSTALLATION

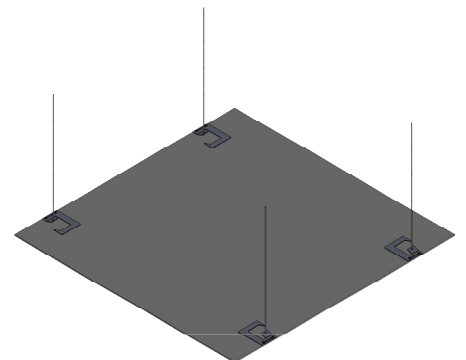
1. Insert the Suspension Cable through the 4-Terminal Set Gripper (F).



2. Loop the Cable through the hole on the raised lip of the Hanging Flange (G), and pull the free end back through the Set Gripper (F) to hold in place.



3. Mount to ceiling using the mounting guide.



4. Slide the Panel Lyte (C) into the Brackets (B).

