

### ARMOR SERIES | RGBW AC MINI EXTERIOR LINEAR FIXTURES

RGBW AC Mini Linear fixtures feature an onboard driver. Available in RGBW with four distinct static white CCTs ranging from 2700K to 6500K, the RGBW AC Mini offers 4 optic beam angles and comes in 4 different lengths. You can daisy chain these fixtures for up to 68 feet at 120 VAC. Connect up to 32 fixtures per DMX controller. This addition to the Armor Series exterior product line is a fantastic solution for wall washing and grazing to create dramatic façade lighting. No remote drivers necessary!

#### GEL-FLUSH™ TECHNOLOGY

The RGBW AC Mini Linear fixture is manufactured with our Gel-Flush™ Technology. Developed with a special sealant from Dow Corning, this proprietary innovation prevents any breach from weather-related elements. No leaking. No condensation. Just clear, unobstructed beams of light.

#### Applications:

Commercial      Museums  
 Entertainment      Public Spaces



**IP67**

### ORDERING GUIDE

Category	Input Voltage	Length	Color	FWHM Beam Angle
<b>MINI</b>	<b>AC</b>			
<b>MINI - Armor RGBW Mini</b>	<b>AC - AC 90-264V</b>	<b>16 - 16.1 in. (410 mm) 20 W</b>	<b>RGBW27 - RGBW+2700K</b>	<b>15 - 15°</b>
		<b>24 - 23.8 in. (605 mm) 30 W</b>	<b>RGBW30 - RGBW+3000K</b>	<b>25 - 25°</b>
		<b>36 - 35.4 in. (900 mm) 45 W</b>	<b>RGBW50 - RGBW+5000K</b>	<b>35 - 35°</b>
		<b>47 - 47.2 in. (1190 mm) 60 W</b>	<b>RGBW65 - RGBW+6500K</b>	<b>50 - 50°</b>

#### OPTIONAL ACCESSORIES:

- |                                                                                                                                                                                        |                                                                                                                                                                                              |                                                                                                                                                     |                                                                                                                                                       |
|----------------------------------------------------------------------------------------------------------------------------------------------------------------------------------------|----------------------------------------------------------------------------------------------------------------------------------------------------------------------------------------------|-----------------------------------------------------------------------------------------------------------------------------------------------------|-------------------------------------------------------------------------------------------------------------------------------------------------------|
| <p><b>1.) Armor Series Mounting Arms:</b></p> <p>Small: ARMORMNT0609<br/>         Large: ARMORMNT1422</p>                                                                              | <p><b>3.) Asymmetric Louver:</b></p> <p>MINIALOUVRGBW410 (410 mm)<br/>         MINIALOUVRGBW605 (605 mm)<br/>         MINIALOUVRGBW900 (900 mm)<br/>         MINIALOUVRGBW1190 (1190 mm)</p> | <p><b>5.) 6 Pin Male to Female Jumper Cable:</b></p> <p>MINIJUMP6PINMK1000 (1000 mm)<br/>         MINIJUMP6PINMK2000 (2000 mm)</p>                  | <p><b>7.) 3 Pin Cable with Female Connector to Bare Wire (DMX):</b></p> <p>MINICLFB3PINLV2000 (2000 mm)<br/>         MINICLFB3PINLV6000 (6000 mm)</p> |
| <p><b>2.) Symmetric Louver:</b></p> <p>MINILOUVRGBW410 (410 mm)<br/>         MINILOUVRGBW605 (605 mm)<br/>         MINILOUVRGBW900 (900 mm)<br/>         MINILOUVRGBW1190 (1190mm)</p> | <p><b>4.) Glare Shield:</b></p> <p>MINISHLD410 (410 mm)<br/>         MINISHLD605 (605 mm)<br/>         MINISHLD900 (900 mm)<br/>         MINISHLD1190 (1190 mm)</p>                          | <p><b>6.) 3 Pin Cable with Female Connector to Bare Wire (Power):</b></p> <p>MINICLFB3PIN2000 (2000 mm)<br/>         MINICLFB3PIN6000 (6000 mm)</p> | <p><b>8.) T-Connector (Power Input):</b></p> <p>MINICBLINPUT336</p>                                                                                   |

### AVAILABLE COLORS



RGBW

SPECIFICATIONS / DIMENSIONS / LUMEN DATA

Operating Voltage	AC 90-264V			
Length	16.1" / 410 mm	23.8" / 605 mm	35.4" / 900 mm	47.2" / 1190 mm
Power Consumption	20 W	30 W	45 W	60 W
LEDs per Fixture	10 LEDs	15 LEDs	24 LEDs	30 LEDs
Color / Temperature	RGBW+2700K, RGBW+3000K, RGBW+5000K, RGBW+6500K			
LED Beam Angle	15°, 25°, 35°, 50°			
Max Daisy Chained Power	32 fixtures @ 120 VAC 32 fixtures @ 220-240 VAC	30 fixtures @ 120 VAC 32 fixtures @ 220-240 VAC	22 fixtures @ 120 VAC 30 fixtures @ 220-240 VAC	17 fixtures @ 120 VAC 24 fixtures @ 220-240 VAC
Control System	DMX			
LED Binning (SDCM)	3-Step MacAdam ellipse (White Channel Only)			
Ambient Temperature	-40° F to 122° F (-40° C to 50° C)			
Housing / Lens Materials	Housing: Extruded Aluminium / Lens: Clear UV Protected PMMA Cover: Tempered Glass End Caps: Extruded Aluminium / Brackets: Extruded Aluminium Housing, bracket, end cap material - 6063 high density aluminum alloy			
Connector	6 Pin Combined Power and DMX. 16 AWG Power / 22 AWG DMX			
Cable Length	11.81" / 300 mm			
Protection Rating	IP67			
Mounting Options	Large Tilttable Stand (180° adjustable), Mounting Arms (available in 2 different sizes)			
Impact Rating	IK08			
Lamp Life	50,000 hours			
Certifications	Luminaires - UL 1598, 3rd Ed., issued September 17, 2008, Rev. October 17, 2012 / Luminaires - CSA C22.2 No.250.0-08, 3rd Ed., issued September 17, 2008, Rev. October 17, 2012 (R2013)			
Fixture Color Finish	Anodized Silver			

LIGHT OUTPUT FOR 16.1" / 410 MM

Beam Angles	15°					25°					35°					50°				
Color / Temp.	Red	Green	Blue	White	All	Red	Green	Blue	White	All	Red	Green	Blue	White	All	Red	Green	Blue	White	All
Lumen / Foot	33	43	12	40	42	32	42	12	39	41	32	41	10	339	34	28	41	9	37	33
Total Lumens	174.9	286.8	80	266.8	840	169.6	280.1	80	260.1	820	169.6	273.5	66.7	2261.1	680	148.4	273.5	60	246.8	660

LIGHT OUTPUT FOR 23.8" / 605 MM

Beam Angles	15°					25°					35°					50°				
Color / Temp.	Red	Green	Blue	White	All	Red	Green	Blue	White	All	Red	Green	Blue	White	All	Red	Green	Blue	White	All
Lumen / Foot	33	43	12	40	42	32	42	12	39	41	32	41	10	339	34	28	41	9	37	33
Total Lumens	263	441	121	403	1324	251	432	119	398	1293	253	432	97	384	1074	214	416	92	378	1041

LIGHT OUTPUT FOR 35.4" / 900 MM

Beam Angles	15°					25°					35°					50°				
Color / Temp.	Red	Green	Blue	White	All	Red	Green	Blue	White	All	Red	Green	Blue	White	All	Red	Green	Blue	White	All
Lumen / Foot	33	43	12	40	42	32	42	12	39	41	32	41	10	339	34	28	41	9	37	33
Total Lumens	422.4	688	192	640	2016	409.6	672	192	624	1968	409.6	656	160	624	1632	35834	656	144	592	1584

LIGHT OUTPUT FOR 47.2" / 1190 MM

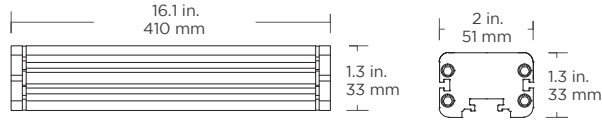
Beam Angles	15°					25°					35°					50°				
Color / Temp.	Red	Green	Blue	White	All	Red	Green	Blue	White	All	Red	Green	Blue	White	All	Red	Green	Blue	White	All
Lumen / Foot	33	43	12	40	42	32	42	12	39	41	32	41	10	339	34	28	41	9	37	33
Total Lumens	528	860	240	800	2520	512	840	240	780	2460	512	820	200	780	2040	448	820	180	740	1980

Acolyte does not warrant or represent that the information is free from errors or omission. The information may change without notice and Acolyte is not in any way liable for the accuracy of any information printed and stored or in any way interpreted or used.

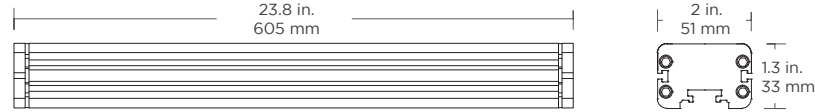
DIMENSIONS / ACCESSORIES

DIMENSIONS

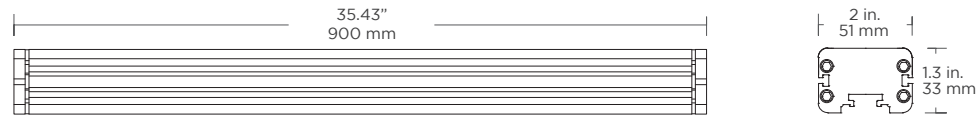
16.1 inches / 410 mm:



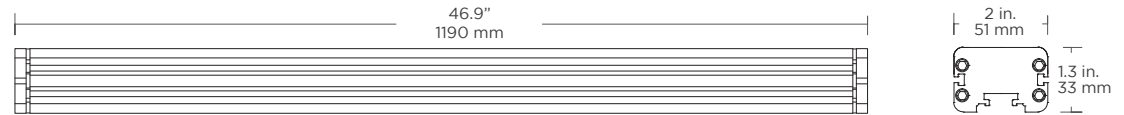
23.8 in. / 605 mm:



35.43 in. / 900 mm:

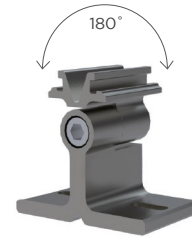
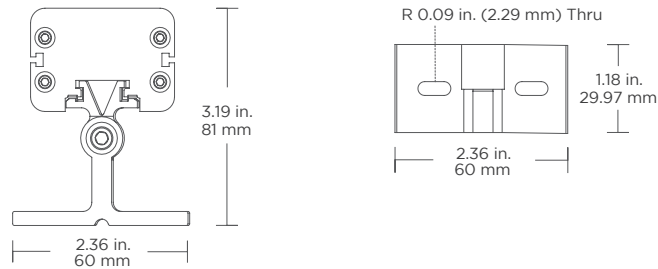


46.9 in. / 1190 mm:



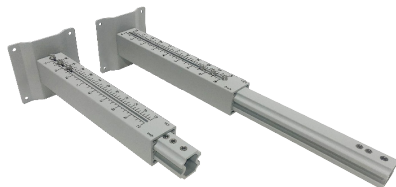
MOUNTING HARDWARE

**Large Tiltable Stand**  
For adjustable mounting angles from 0-180°



**Mounting Arms**

Small Mounting Arm Part Number: ARMORMNT0609  
Large Mounting Arm Part Number: ARMORMNT1422

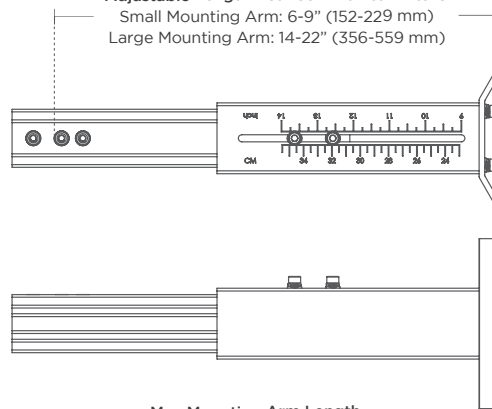


**Armor Series Mounting Arm**

Adjustable mounts (in 3 sizes) help set desired angle and distance from lighting surface

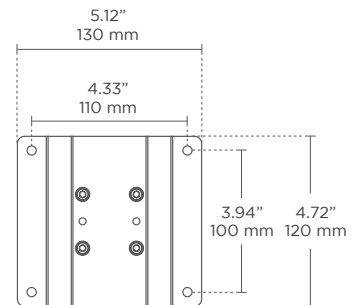
**Adjustable Length Between Wall to Fixture**

Small Mounting Arm: 6-9" (152-229 mm)  
Large Mounting Arm: 14-22" (356-559 mm)



**Max Mounting Arm Length**

Small Mounting Arm: 10" (254 mm)  
Large Mounting Arm: 23" (585 mm)



ACCESSORIES

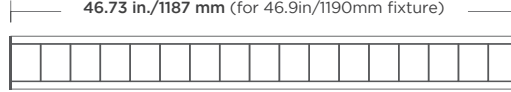
**Symmetric Louver**

For glare reduction  
Note: This will affect beam angle

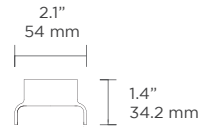


Part Number:  
MINILOUVRGBW410 (410 mm)  
MINILOUVRGBW605 (605 mm)  
MINILOUVRGBW900 (900 mm)  
MINILOUVRGBW1190 (1190mm)

16.02 in./407 mm (for 16.10in/410mm fixture)  
23.70 in./602 mm (for 23.80in/605mm fixture)  
35.31 in./897 mm (for 35.43in/900mm fixture)  
46.73 in./1187 mm (for 46.9in/1190mm fixture)



Not recommended for exterior applications



Side View

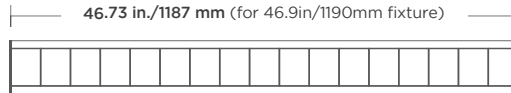
**Asymmetric Louver**

For glare reduction  
Note: This will affect beam angle

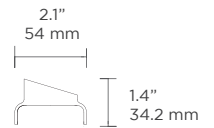


Part Number:  
MINIALOUVRGBW410 (410 mm)  
MINIALOUVRGBW605 (605 mm)  
MINIALOUVRGBW900 (900 mm)  
MINIALOUVRGBW1190 (1190 mm)

16.02 in./407 mm (for 16.10in/410mm fixture)  
23.70 in./602 mm (for 23.80in/605mm fixture)  
35.31 in./897 mm (for 35.43in/900mm fixture)  
46.73 in./1187 mm (for 46.9in/1190mm fixture)



Not recommended for exterior applications



Side View

**Glare Shield**

To reduce glare or redirect light

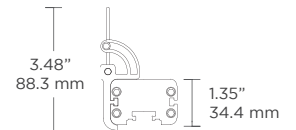


Part Number:  
MINISHLD410 (410 mm)  
MINISHLD605 (605 mm)  
MINISHLD900 (900 mm)  
MINISHLD1190 (1190 mm)

16.02 in./407 mm (for 16.10in/410mm fixture)  
23.70 in./602 mm (for 23.80in/605mm fixture)  
35.31 in./897 mm (for 35.43in/900mm fixture)  
46.73 in./1187 mm (for 46.9in/1190mm fixture)



Adds 2.0" / 50.8 mm to the height of the fixture



Side View

**3 Pin Female Cable To Bare Wire**

To bare wire for incoming power



Part Number:  
MINICLFB3PIN2000 (6.6 ft / 2000 mm)  
MINICLFB3PIN6000 (19.7 ft / 6000 mm)

**6 Pin Male To Female Jumper Cable**

To connect 6 pin male connector to 6 pin female connector

Lengths: 39.4 in. (1000 mm) and 78.7 in. (2000 mm)

(Consult factory for custom length)



Part Number:  
MINIJUMP6PINMK1000 (3.3 ft / 1000 mm)  
MINIJUMP6PINMK2000 (6.6 ft / 2000 mm)

**3 Pin Female To Bare Wire DMX Input Cable**

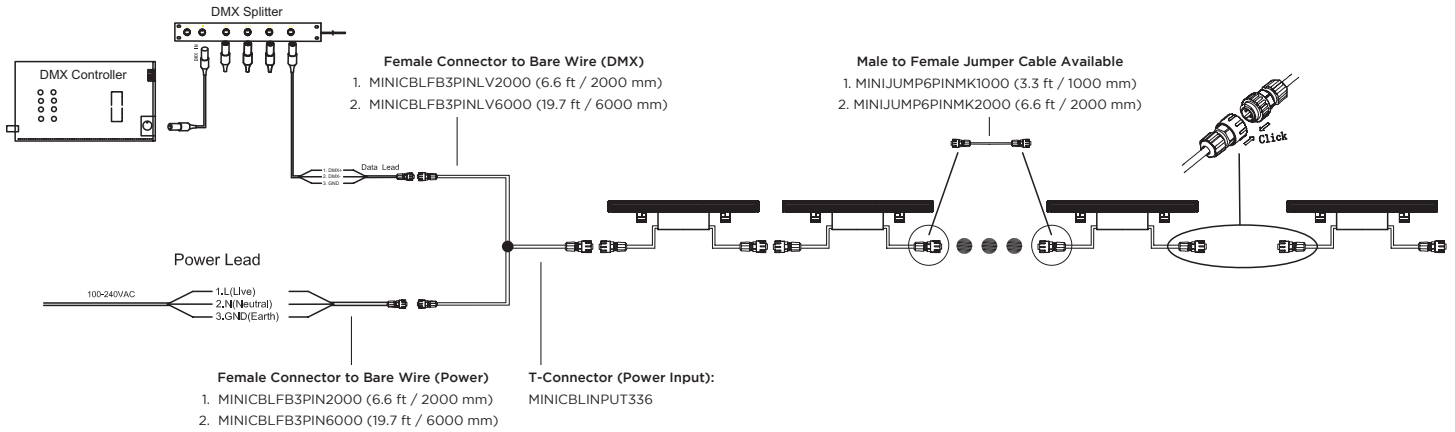
To bare wire for DMX controller



Part Number:  
MINICLFB3PINLV2000 (6.6 ft / 2000 mm)  
MINICLFB3PINLV6000 (19.7 ft / 6000 mm)

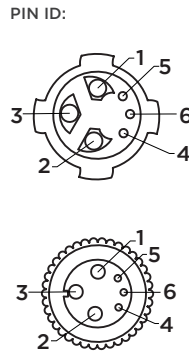
CONNECTION / CONNECTORS

DMX WIRING DIAGRAM:



6-PIN CONNECTOR AND WIRE SPECS

Cable	Function	Pin ID	Wire Size	Wire Color (US)
Power Lead in / Power Extension	L (Line)	1	16AWG	Black
	N (Neutral)	2	16AWG	White
	GND (Ground)	3	16AWG	Green
DMX	DMX +	4	22AWG	Yellow
	DMX -	5	22AWG	Gray
	GND	6	22AWG	Purple

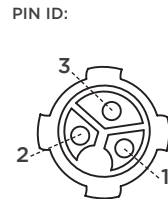


6-Pin Connector is used for the following cables:

1. Fixture in/out
2. MINICBLINPUT336 (Output Side)
3. MINIJUMP6PINMK1000
4. MINIJUMP6PINMK2000

3-PIN CONNECTOR AND WIRE SPECS

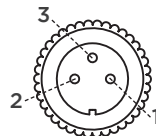
Cable	Function	Pin ID	Wire Size	Wire Color (US)
Power Lead In / Power Extension	L (Line)	1	16AWG	Black
	N (Neutral)	2	16AWG	White
	GND (Ground)	3	16AWG	Green



3-Pin Connector is used for the following cables:

1. MINICBLINPUT336 (Input side power)
2. MINICBLFB3PIN2000
3. MINICBLFB3PIN6000

DMX	DMX +	1	22AWG	Yellow
	DMX -	2	22AWG	Gray
	GND	3	22AWG	Purple



3-Pin Connector is used for the following cables:

1. MINICBLINPUT336 (Input side DMX)
2. MINICBLFB3PINLV2000
3. MINICBLFB3PINLV6000

Notes:

1. The top wiring diagram shows only typical connections. Actual wiring depends on the site configuration and installation.
2. The wire connection method shall be determined by local electrical codes and regulations. Wire nuts or screw terminal blocks are recommended for wire connection.
3. Actual number of wall washer can be connected may vary according to cable lengths and signal source.
4. Shield signal cables are recommended for signal protection.