

ARMOR SERIES | RGBW AC MINI EXTERIOR LINEAR FIXTURES

RGBW AC Mini Linear fixtures feature an onboard driver. Available in RGBW with four distinct static white CCTs ranging from 2700K to 6500K, the RGBW AC Mini offers 4 optic beam angles and comes in 4 different lengths. You can daisy chain these fixtures for up to 68 feet at 120 VAC. Connect up to 32 fixtures per DMX controller. This addition to the Armor Series exterior product line is a fantastic solution for wall washing and grazing to create dramatic façade lighting. No remote drivers necessary!

GEL-FLUSH™ TECHNOLOGY

The RGBW AC Mini Linear fixture is manufactured with our Gel-Flush™ Technology. Developed with a special sealant from Dow Corning, this proprietary innovation prevents any breach from weather-related elements. No leaking. No condensation. Just clear, unobstructed beams of light.

Applications:

Commercial Museums
 Entertainment Public Spaces



IP67

ORDERING GUIDE

| Category | Input Voltage | Length | Color | FWHM Beam Angle |
|-------------------------------|------------------------|-------------------------------------|----------------------------|-----------------|
| MINI | AC | | | |
| MINI - Armor RGBW Mini | AC - AC 90-264V | 16 - 16.1 in. (410 mm) 20 W | RGBW27 - RGBW+2700K | 15 - 15° |
| | | 24 - 23.8 in. (605 mm) 30 W | RGBW30 - RGBW+3000K | 25 - 25° |
| | | 36 - 35.4 in. (900 mm) 45 W | RGBW50 - RGBW+5000K | 35 - 35° |
| | | 47 - 47.2 in. (1190 mm) 60 W | RGBW65 - RGBW+6500K | 50 - 50° |

OPTIONAL ACCESSORIES:

- | | | | |
|--|--|---|---|
| <p>1.) Armor Series Mounting Arms:</p> <p>Small: ARMORMNT0609 Large: ARMORMNT1422</p> | <p>3.) Asymmetric Louver:</p> <p>MINIALOUVRGBW410 (410 mm) MINIALOUVRGBW605 (605 mm) MINIALOUVRGBW900 (900 mm) MINIALOUVRGBW1190 (1190 mm)</p> | <p>5.) 6 Pin Male to Female Jumper Cable:</p> <p>MINIJUMP6PINMK1000 (1000 mm) MINIJUMP6PINMK2000 (2000 mm)</p> | <p>7.) 3 Pin Cable with Female Connector to Bare Wire (DMX):</p> <p>MINICLFB3PINLV2000 (2000 mm) MINICLFB3PINLV6000 (6000 mm)</p> |
| <p>2.) Symmetric Louver:</p> <p>MINILOUVRGBW410 (410 mm) MINILOUVRGBW605 (605 mm) MINILOUVRGBW900 (900 mm) MINILOUVRGBW1190 (1190mm)</p> | <p>4.) Glare Shield:</p> <p>MINISHLD410 (410 mm) MINISHLD605 (605 mm) MINISHLD900 (900 mm) MINISHLD1190 (1190 mm)</p> | <p>6.) 3 Pin Cable with Female Connector to Bare Wire (Power):</p> <p>MINICLFB3PIN2000 (2000 mm) MINICLFB3PIN6000 (6000 mm)</p> | <p>8.) T-Connector (Power Input):</p> <p>MINICBLINPUT336</p> |

AVAILABLE COLORS



RGBW

SPECIFICATIONS / DIMENSIONS / LUMEN DATA

| | | | | |
|--------------------------|--|--|--|--|
| Operating Voltage | AC 90-264V | | | |
| Length | 16.1" / 410 mm | 23.8" / 605 mm | 35.4" / 900 mm | 47.2" / 1190 mm |
| Power Consumption | 20 W | 30 W | 45 W | 60 W |
| LEDs per Fixture | 10 LEDs | 15 LEDs | 24 LEDs | 30 LEDs |
| Color / Temperature | RGBW+2700K, RGBW+3000K, RGBW+5000K, RGBW+6500K | | | |
| LED Beam Angle | 15°, 25°, 35°, 50° | | | |
| Max Daisy Chained Power | 32 fixtures @ 120 VAC 32 fixtures @ 220-240 VAC | 30 fixtures @ 120 VAC 32 fixtures @ 220-240 VAC | 22 fixtures @ 120 VAC 30 fixtures @ 220-240 VAC | 17 fixtures @ 120 VAC 24 fixtures @ 220-240 VAC |
| Control System | DMX | | | |
| LED Binning (SDCM) | 3-Step MacAdam ellipse (White Channel Only) | | | |
| Ambient Temperature | -40° F to 122° F (-40° C to 50° C) | | | |
| Housing / Lens Materials | Housing: Extruded Aluminium / Lens: Clear UV Protected PMMA Cover: Tempered Glass End Caps: Extruded Aluminium / Brackets: Extruded Aluminium Housing, bracket, end cap material - 6063 high density aluminum alloy | | | |
| Connector | 6 Pin Combined Power and DMX. 16 AWG Power / 22 AWG DMX | | | |
| Cable Length | 11.81" / 300 mm | | | |
| Protection Rating | IP67 | | | |
| Mounting Options | Large Tilttable Stand (180° adjustable), Mounting Arms (available in 2 different sizes) | | | |
| Impact Rating | IK08 | | | |
| Lamp Life | 50,000 hours | | | |
| Certifications | Luminaires - UL 1598, 3rd Ed., issued September 17, 2008, Rev. October 17, 2012 / Luminaires - CSA C22.2 No.250.0-08, 3rd Ed., issued September 17, 2008, Rev. October 17, 2012 (R2013) | | | |
| Fixture Color Finish | Anodized Silver | | | |

LIGHT OUTPUT FOR 16.1" / 410 MM

| Beam Angles | 15° | | | | | 25° | | | | | 35° | | | | | 50° | | | | |
|---------------|-------|-------|------|-------|-----|-------|-------|------|-------|-----|-------|-------|------|--------|-----|-------|-------|------|-------|-----|
| | Red | Green | Blue | White | All | Red | Green | Blue | White | All | Red | Green | Blue | White | All | Red | Green | Blue | White | All |
| Color / Temp. | 33 | 43 | 12 | 40 | 42 | 32 | 42 | 12 | 39 | 41 | 32 | 41 | 10 | 339 | 34 | 28 | 41 | 9 | 37 | 33 |
| Lumen / Foot | 33 | 43 | 12 | 40 | 42 | 32 | 42 | 12 | 39 | 41 | 32 | 41 | 10 | 339 | 34 | 28 | 41 | 9 | 37 | 33 |
| Total Lumens | 174.9 | 286.8 | 80 | 266.8 | 840 | 169.6 | 280.1 | 80 | 260.1 | 820 | 169.6 | 273.5 | 66.7 | 2261.1 | 680 | 148.4 | 273.5 | 60 | 246.8 | 660 |

LIGHT OUTPUT FOR 23.8" / 605 MM

| Beam Angles | 15° | | | | | 25° | | | | | 35° | | | | | 50° | | | | |
|---------------|-----|-------|------|-------|------|-----|-------|------|-------|------|-----|-------|------|-------|------|-----|-------|------|-------|------|
| | Red | Green | Blue | White | All | Red | Green | Blue | White | All | Red | Green | Blue | White | All | Red | Green | Blue | White | All |
| Color / Temp. | 33 | 43 | 12 | 40 | 42 | 32 | 42 | 12 | 39 | 41 | 32 | 41 | 10 | 339 | 34 | 28 | 41 | 9 | 37 | 33 |
| Lumen / Foot | 33 | 43 | 12 | 40 | 42 | 32 | 42 | 12 | 39 | 41 | 32 | 41 | 10 | 339 | 34 | 28 | 41 | 9 | 37 | 33 |
| Total Lumens | 263 | 441 | 121 | 403 | 1324 | 251 | 432 | 119 | 398 | 1293 | 253 | 432 | 97 | 384 | 1074 | 214 | 416 | 92 | 378 | 1041 |

LIGHT OUTPUT FOR 35.4" / 900 MM

| Beam Angles | 15° | | | | | 25° | | | | | 35° | | | | | 50° | | | | |
|---------------|-------|-------|------|-------|------|-------|-------|------|-------|------|-------|-------|------|-------|------|-------|-------|------|-------|------|
| | Red | Green | Blue | White | All | Red | Green | Blue | White | All | Red | Green | Blue | White | All | Red | Green | Blue | White | All |
| Color / Temp. | 33 | 43 | 12 | 40 | 42 | 32 | 42 | 12 | 39 | 41 | 32 | 41 | 10 | 339 | 34 | 28 | 41 | 9 | 37 | 33 |
| Lumen / Foot | 33 | 43 | 12 | 40 | 42 | 32 | 42 | 12 | 39 | 41 | 32 | 41 | 10 | 339 | 34 | 28 | 41 | 9 | 37 | 33 |
| Total Lumens | 422.4 | 688 | 192 | 640 | 2016 | 409.6 | 672 | 192 | 624 | 1968 | 409.6 | 656 | 160 | 624 | 1632 | 35834 | 656 | 144 | 592 | 1584 |

LIGHT OUTPUT FOR 47.2" / 1190 MM

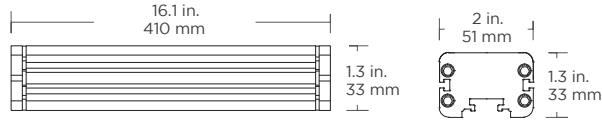
| Beam Angles | 15° | | | | | 25° | | | | | 35° | | | | | 50° | | | | |
|---------------|-----|-------|------|-------|------|-----|-------|------|-------|------|-----|-------|------|-------|------|-----|-------|------|-------|------|
| | Red | Green | Blue | White | All | Red | Green | Blue | White | All | Red | Green | Blue | White | All | Red | Green | Blue | White | All |
| Color / Temp. | 33 | 43 | 12 | 40 | 42 | 32 | 42 | 12 | 39 | 41 | 32 | 41 | 10 | 339 | 34 | 28 | 41 | 9 | 37 | 33 |
| Lumen / Foot | 33 | 43 | 12 | 40 | 42 | 32 | 42 | 12 | 39 | 41 | 32 | 41 | 10 | 339 | 34 | 28 | 41 | 9 | 37 | 33 |
| Total Lumens | 528 | 860 | 240 | 800 | 2520 | 512 | 840 | 240 | 780 | 2460 | 512 | 820 | 200 | 780 | 2040 | 448 | 820 | 180 | 740 | 1980 |

Acolyte does not warrant or represent that the information is free from errors or omission. The information may change without notice and Acolyte is not in any way liable for the accuracy of any information printed and stored or in any way interpreted or used.

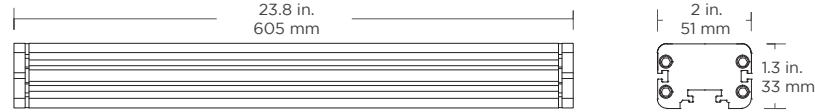
DIMENSIONS / ACCESSORIES

DIMENSIONS

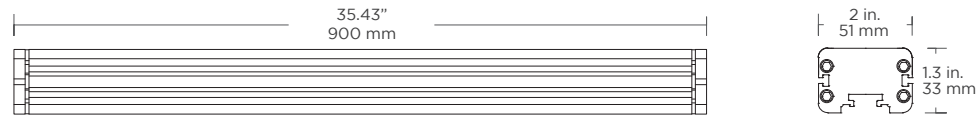
16.1 inches / 410 mm:



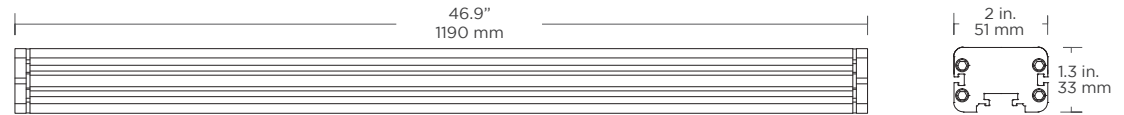
23.8 in. / 605 mm:



35.43 in. / 900 mm:

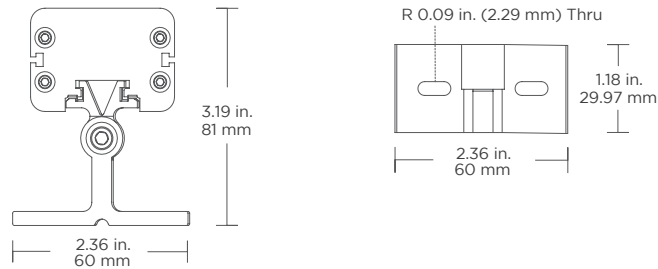


46.9 in. / 1190 mm:



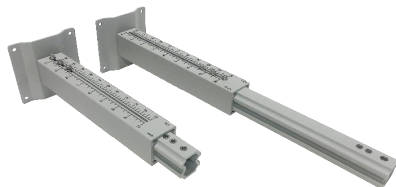
MOUNTING HARDWARE

Large Tiltable Stand
For adjustable mounting angles from 0-180°



Mounting Arms

Small Mounting Arm Part Number: ARMORMNT0609
Large Mounting Arm Part Number: ARMORMNT1422

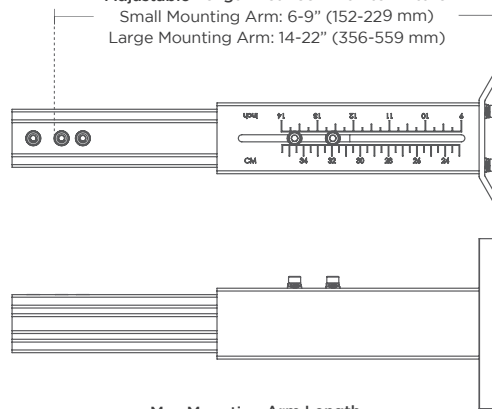


Armor Series Mounting Arm

Adjustable mounts (in 3 sizes) help set desired angle and distance from lighting surface

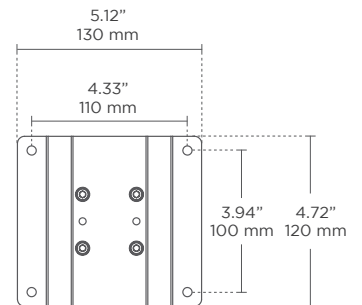
Adjustable Length Between Wall to Fixture

Small Mounting Arm: 6-9" (152-229 mm)
Large Mounting Arm: 14-22" (356-559 mm)



Max Mounting Arm Length

Small Mounting Arm: 10" (254 mm)
Large Mounting Arm: 23" (585 mm)



ACCESSORIES

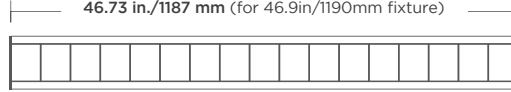
Symmetric Louver

For glare reduction
Note: This will affect beam angle

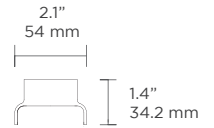


Part Number:
MINILOUVRGBW410 (410 mm)
MINILOUVRGBW605 (605 mm)
MINILOUVRGBW900 (900 mm)
MINILOUVRGBW1190 (1190mm)

16.02 in./407 mm (for 16.10in/410mm fixture)
23.70 in./602 mm (for 23.80in/605mm fixture)
35.31 in./897 mm (for 35.43in/900mm fixture)
46.73 in./1187 mm (for 46.9in/1190mm fixture)



Not recommended for exterior applications



Side View

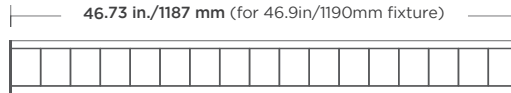
Asymmetric Louver

For glare reduction
Note: This will affect beam angle

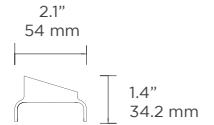


Part Number:
MINIALOUVRGBW410 (410 mm)
MINIALOUVRGBW605 (605 mm)
MINIALOUVRGBW900 (900 mm)
MINIALOUVRGBW1190 (1190 mm)

16.02 in./407 mm (for 16.10in/410mm fixture)
23.70 in./602 mm (for 23.80in/605mm fixture)
35.31 in./897 mm (for 35.43in/900mm fixture)
46.73 in./1187 mm (for 46.9in/1190mm fixture)



Not recommended for exterior applications



Side View

Glare Shield

To reduce glare or redirect light

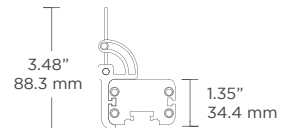


Part Number:
MINISHLD410 (410 mm)
MINISHLD605 (605 mm)
MINISHLD900 (900 mm)
MINISHLD1190 (1190 mm)

16.02 in./407 mm (for 16.10in/410mm fixture)
23.70 in./602 mm (for 23.80in/605mm fixture)
35.31 in./897 mm (for 35.43in/900mm fixture)
46.73 in./1187 mm (for 46.9in/1190mm fixture)



Adds 2.0" / 50.8 mm to the height of the fixture



Side View

3 Pin Female Cable To Bare Wire

To bare wire for incoming power



Part Number:
MINICLFB3PIN2000 (6.6 ft / 2000 mm)
MINICLFB3PIN6000 (19.7 ft / 6000 mm)

6 Pin Male To Female Jumper Cable

To connect 6 pin male connector to 6 pin female connector

Lengths: 39.4 in. (1000 mm) and 78.7 in. (2000 mm)

(Consult factory for custom length)



Part Number:
MINIJUMP6PINMK1000 (3.3 ft / 1000 mm)
MINIJUMP6PINMK2000 (6.6 ft / 2000 mm)

3 Pin Female To Bare Wire DMX Input Cable

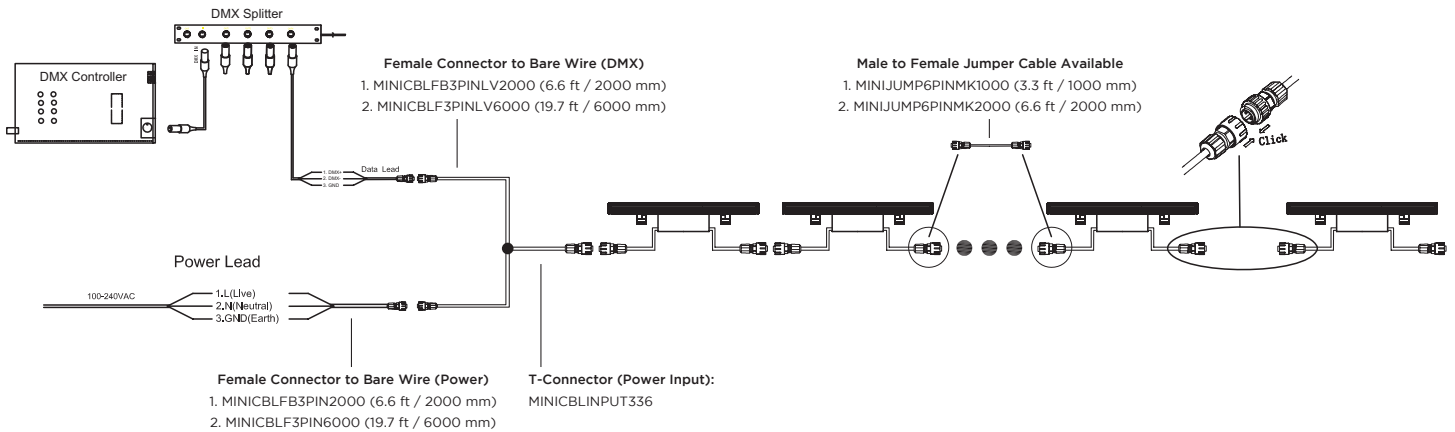
To bare wire for DMX controller



Part Number:
MINICLFB3PINLV2000 (6.6 ft / 2000 mm)
MINICLFB3PINLV6000 (19.7 ft / 6000 mm)

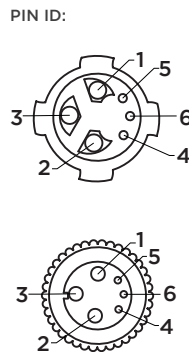
CONNECTION / CONNECTORS

DMX WIRING DIAGRAM:



6-PIN CONNECTOR AND WIRE SPECS

| Cable | Function | Pin ID | Wire Size | Wire Color (US) |
|---------------------------------|--------------|--------|-----------|-----------------|
| Power Lead in / Power Extension | L (Line) | 1 | 16AWG | Black |
| | N (Neutral) | 2 | 16AWG | White |
| | GND (Ground) | 3 | 16AWG | Green |
| DMX | DMX + | 4 | 22AWG | Yellow |
| | DMX - | 5 | 22AWG | Gray |
| | GND | 6 | 22AWG | Purple |

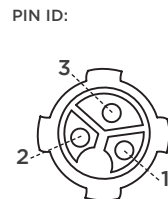


6-Pin Connector is used for the following cables:

1. Fixture in/out
2. MINICBLINPUT336 (Output Side)
3. MINIJUMP6PINMK1000
4. MINIJUMP6PINMK2000

3-PIN CONNECTOR AND WIRE SPECS

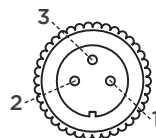
| Cable | Function | Pin ID | Wire Size | Wire Color (US) |
|---------------------------------|--------------|--------|-----------|-----------------|
| Power Lead In / Power Extension | L (Line) | 1 | 16AWG | Black |
| | N (Neutral) | 2 | 16AWG | White |
| | GND (Ground) | 3 | 16AWG | Green |



3-Pin Connector is used for the following cables:

1. MINICBLINPUT336 (Input side power)
2. MINICBLFB3PIN2000
3. MINICBLFB3PIN6000

| | | | | |
|-----|-------|---|-------|--------|
| DMX | DMX + | 1 | 22AWG | Yellow |
| | DMX - | 2 | 22AWG | Gray |
| | GND | 3 | 22AWG | Purple |



3-Pin Connector is used for the following cables:

1. MINICBLINPUT336 (Input side DMX)
2. MINICBLFB3PINLV2000
3. MINICBLFB3PINLV6000

Notes:

1. The top wiring diagram shows only typical connections. Actual wiring depends on the site configuration and installation.
2. The wire connection method shall be determined by local electrical codes and regulations. Wire nuts or screw terminal blocks are recommended for wire connection.
3. Actual number of wall washer can be connected may vary according to cable lengths and signal source.
4. Shield signal cables are recommended for signal protection.