

## ARMOR SERIES | MINI LINEAR INTERNATIONAL FIXTURES

With a small profile and 5 different optics options, you can use the Armor Series MINI Linear International fixture in several applications or one project. 6 color temperatures and 3 different lengths allow mixing and matching as needed to fit in any location. Choose the mounting bracket to match your application, from low space for vertical washing of facades, to the tilting bracket for a more focused control. This version is not compatible to be daisy chained with the regular USA MINI Linear fixtures. The Armor Series Mini Linear International comes with a three-year warranty.



## GEL-FLUSH™ TECHNOLOGY

The Armor Series MINI Linear International fixture is manufactured with our Gel-Flush™ Technology. This proprietary innovation prevents breaches from any weather-related elements. **GENLED Acolyte**® exterior products are guaranteed to never leak, condensate, or be breached by any environmental elements. This results in a clear and unobstructed beam of light from our fixtures. No more water beads changing and/or refracting the specified beam angles!



## Applications:

Commercial  
Entertainment

Museums  
Public Spaces



**IP66**

## ORDERING GUIDE

| Category                  | CRI          | Voltage    | Wattage                        | Color Temp | FWHM Beam Angle |
|---------------------------|--------------|------------|--------------------------------|------------|-----------------|
| <b>MINI</b>               |              | <b>24</b>  |                                |            |                 |
| <b>MINI - Armor MINII</b> | 80 - 80+ CRI | 24 - 24VDC | 5 - 5 W (185 mm / 7.28 in.)    | 27 - 2700K | 10x40 - 10x40°  |
|                           | 90 - 90+ CRI |            | 15 - 15 W (500 mm / 19.7 in.)  | 30 - 3000K | 15 - 15°        |
|                           |              |            | 30 - 30 W (1000 mm / 39.4 in.) | 35 - 3500K | 20 - 20°        |
|                           |              |            |                                | 40 - 4000K | 35 - 35°        |
|                           |              |            |                                | 50 - 5000K | 50 - 50°        |
|                           |              |            |                                | 60 - 6000K |                 |

| Mounting Option             | Dimming                                                                                           |
|-----------------------------|---------------------------------------------------------------------------------------------------|
| SI - Snap-In                | 0-10DA - 0-10V or DALI dimmable                                                                   |
| TS - Tilttable Stand        | TRI - Triac dimmable                                                                              |
| TSL - Large Tilttable Stand | (Use TRI model for non-dimming. Triac model is compatible with Acolyte MLV or Universal drivers.) |

## DRIVERS:

**96W Non-dimming Driver + Dimming Module**  
(Use with 0-10V model)



Driver Part No.: DRVW2496  
Dimming Module Part No.: LVDIMMOD0-10PWM  
Note: The output of each dimming module is limited to 132W.

**60W & 96W Magnetic Driver**  
(Use with Triac model)



60W Part No.: DRVWDIM2460  
96W Part No.: DRVWDIM24100

**60W & 96W Universal ELV Drivers**  
(Use with Triac model)



60W Part No.: DRVW2460ELV  
96W Part No.: DRVW2496ELV

## 2.) Symmetric Louver:

MINILOUV185 (185mm)  
MINILOUV500 (500mm)  
MINILOUV1000 (1000mm)

## 3.) Asymmetric Louver:

MINIALOUV185 (185mm)  
MINIALOUV500 (500mm)  
MINIALOUV1000 (1000mm)

## 4.) Glare Shield:

MINISHL185 (185mm)  
MINISHL500 (500mm)  
MINISHL1000 (1000mm)

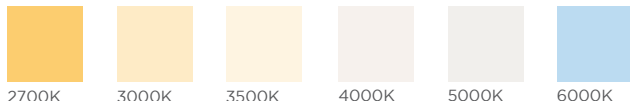
## 5.) 2 Pin Male to Female Jumper Cable:

MINIJUMPMF1000 (1000mm)  
MINIJUMPMF2000 (2000mm)

## 6.) 2 Pin Female Cable to Bare Wire:

MINICBLFB300 (300mm)  
MINICBLFB500 (500mm)  
MINICBLFB1000 (1000mm)  
MINICBLFB2000 (2000mm)

## AVAILABLE COLOR TEMPERATURES



## OPTIONAL ACCESSORIES:

### 1.) Armor Series Mounting Arms:

Small: ARMORMNT0609  
Large: ARMORMNT1422

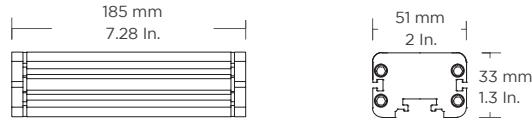
## SPECIFICATIONS

|                          |                                                                                                                                                                                                                              |                    |                     |
|--------------------------|------------------------------------------------------------------------------------------------------------------------------------------------------------------------------------------------------------------------------|--------------------|---------------------|
| Operating Voltage        | 24V DC                                                                                                                                                                                                                       |                    |                     |
| Length                   | 185 mm / 7.28 in.                                                                                                                                                                                                            | 500 mm / 19.69 in. | 1000 mm / 39.37 in. |
| Power Consumption        | 5 W                                                                                                                                                                                                                          | 15 W               | 30 W                |
| LEDs per Fixture         | 5 LEDs                                                                                                                                                                                                                       | 15 LEDs            | 30 LEDs             |
| Amperage                 | 0.2 A                                                                                                                                                                                                                        | 0.625 A            | 1.25 A              |
| Color Temperature        | 2700K, 3000K, 3500K, 4000K, 5000K, 6000K                                                                                                                                                                                     |                    |                     |
| LED Beam Angle           | 15°, 20°, 35°, 50°, 10°x40°                                                                                                                                                                                                  |                    |                     |
| Lumen Output / Meter     | 2952.4                                                                                                                                                                                                                       |                    |                     |
| Lumen Output / Foot      | 900.12                                                                                                                                                                                                                       |                    |                     |
| Total Lumens             | 570.6                                                                                                                                                                                                                        | 1476.2             | 2952.4              |
| Max. Run Length          | 14 fixtures                                                                                                                                                                                                                  | 8 fixtures         | 4 fixtures          |
| Weight                   | 0.48 kg / 1.06 lb                                                                                                                                                                                                            | 0.85 kg / 1.87 lb  | 1.2 kg / 2.65 lb    |
| Control System           | 0-10V, DALI                                                                                                                                                                                                                  |                    |                     |
| CRI                      | 80+ or 90+CRI                                                                                                                                                                                                                |                    |                     |
| LED Binning (SDCM)       | 3-step (80 CRI) or 2-step (90 CRI)                                                                                                                                                                                           |                    |                     |
| Binning Tolerance        | +/- 100K                                                                                                                                                                                                                     |                    |                     |
| Ambient Temperature      | -40° C to 50° C (-40° F to 122° F)                                                                                                                                                                                           |                    |                     |
| Housing / Lens Materials | Housing: Extruded Aluminium / Lens: Clear UV Protected PMMA<br>Cover: Tempered Glass<br>End Caps: Extruded Aluminium / Brackets: Extruded Aluminium<br>Housing, bracket, end cap material - 6063 high density aluminum alloy |                    |                     |
| Connector                | 2 pin power connector                                                                                                                                                                                                        |                    |                     |
| Cable Length             | 300 mm (11.81 in.)                                                                                                                                                                                                           |                    |                     |
| Protection Rating        | IP66                                                                                                                                                                                                                         |                    |                     |
| Impact Rating            | IK08                                                                                                                                                                                                                         |                    |                     |
| Mounting Options         | Snap-In Clip, Tilttable Stand (140° adjustable), Large Tilttable Stand (180° adjustable), Mounting Arms (available in 2 different sizes)                                                                                     |                    |                     |
| Lamp Life                | 50,000 hours                                                                                                                                                                                                                 |                    |                     |
| Certifications           | CE, ETL / Luminaires - UL 1598, 3rd Ed., issued September 17, 2008, Rev. October 17, 2012 /<br>Luminaires - CSA C22.2 No.250.0-08, 3rd Ed., issued September 17, 2008, Rev. October 17, 2012 (R2013)                         |                    |                     |
| Fixture Color Finish     | Anodized Silver                                                                                                                                                                                                              |                    |                     |

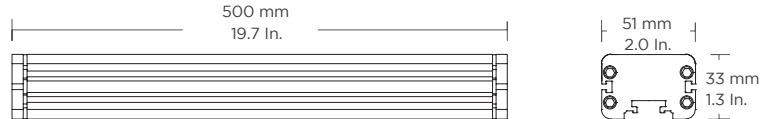
\* ALL LUMEN DATA IS FROM 2700K 80 CRI FIXTURES.

**DIMENSIONS / MOUNTING HARDWARE:**

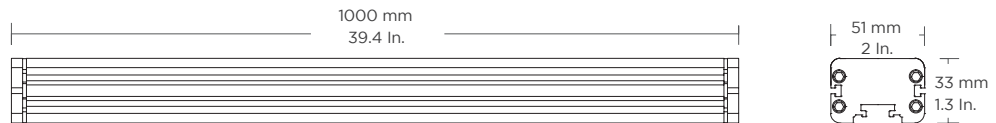
185 mm / 7.28 in.:



500 mm / 19.7 in.:



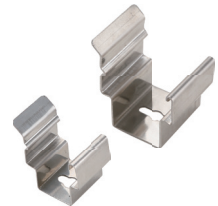
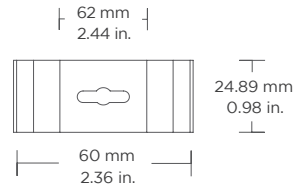
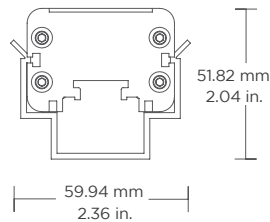
1000 mm / 39.4 in.:



**MOUNTING HARDWARE**

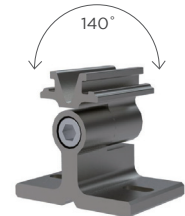
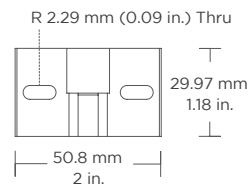
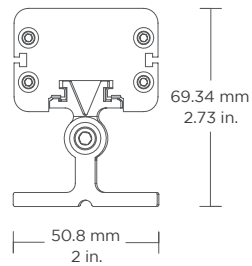
**Snap-in Clip**

For narrow installations where mounting clips need to be installed first



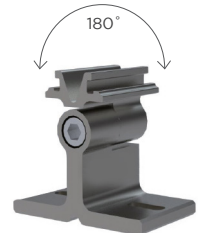
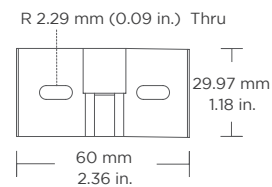
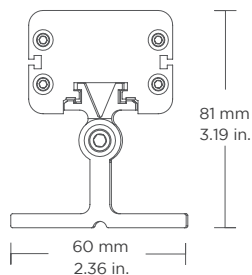
**Tiltable Stand**

For adjustable mounting angles up to 140°



**Large Tiltable Stand**

For adjustable mounting angles up to 180°

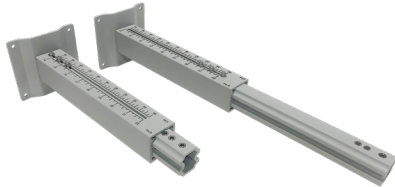


**MOUNTING HARDWARE / ACCESSORIES**

**MOUNTING HARDWARE**

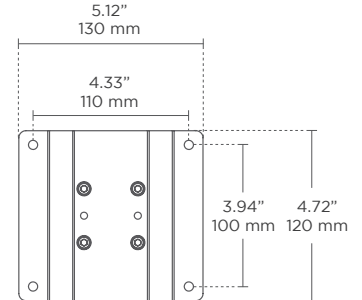
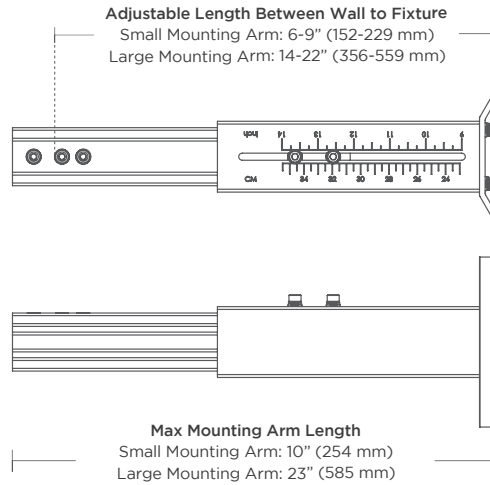
**Mounting Arms**

Small Mounting Arm Part Number: ARMORMNT0609  
Large Mounting Arm Part Number: ARMORMNT1422



**Armor Series Mounting Arm**

Adjustable mounts (in 3 sizes) help set desired angle and distance from lighting surface



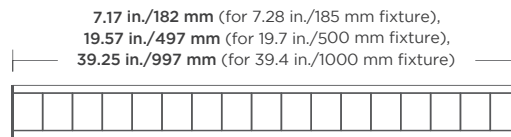
**ACCESSORIES**

Part Number: MINILOUV

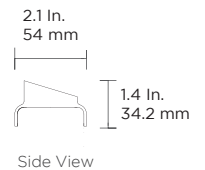


**Louver**

For glare reduction  
Note: This will affect beam angle



Not recommended for exterior applications

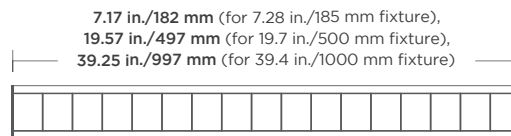


Part Number: MINIALOUV

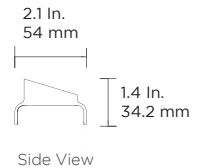


**Asymmetric Louver**

For glare reduction  
Note: This will affect beam angle



Not recommended for exterior applications

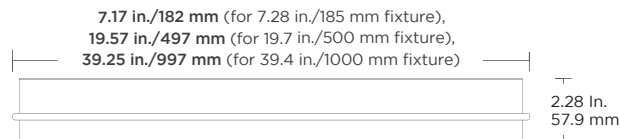


Part Number: MINISHLD

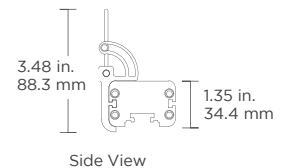


**Glare Shield**

To reduce glare or redirect light



Adds 2.0 in. / 50.8 mm to the height of the fixture



Default cable length on fixture is 11.81 in. / 30 cm

**2 Pin Female Cable To Bare Wire**  
To bare wire for incoming power

MINICBLFB300 (300mm)  
MINICBLFB500 (500mm)  
MINICBLFB1000 (1000mm)  
MINICBLFB2000 (2000mm)



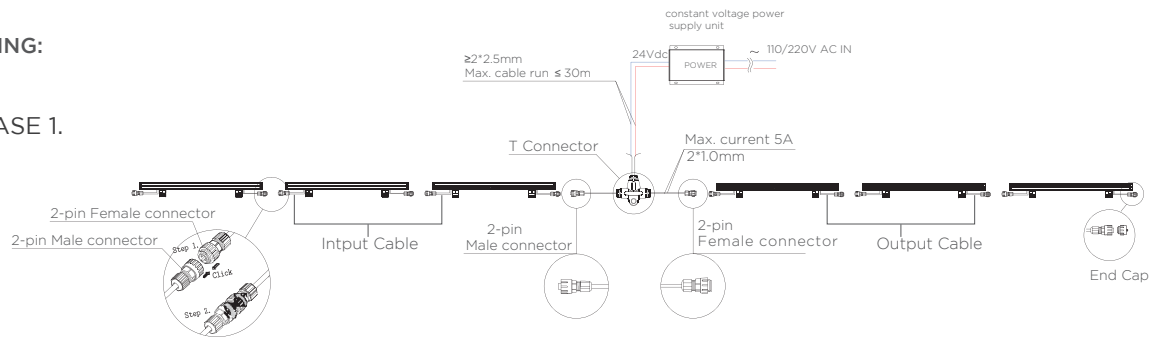
**2 Pin Male To Female Jumper Cable**  
To connect 2 pin male connector to 2 pin female connector

MINIJUMPMF1000 (1000mm)  
MINIJUMPMF2000 (2000mm)  
\*Consult factory for custom length

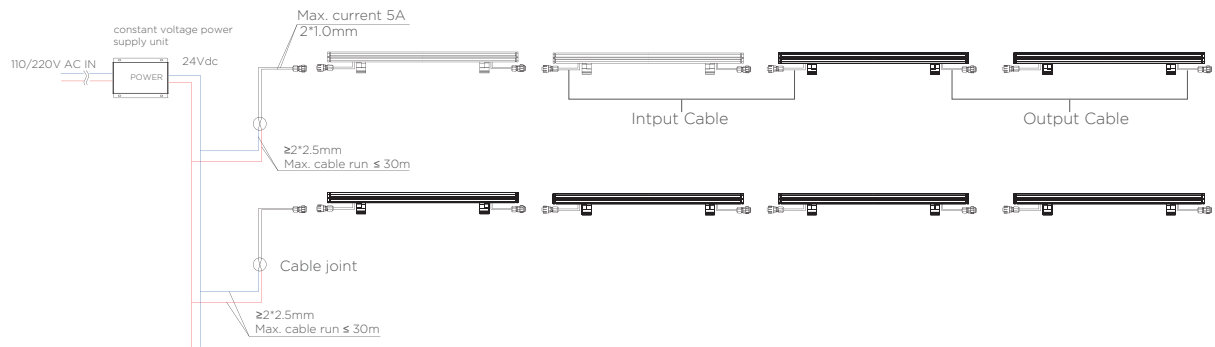
CONNECTION

NON DIMMING:

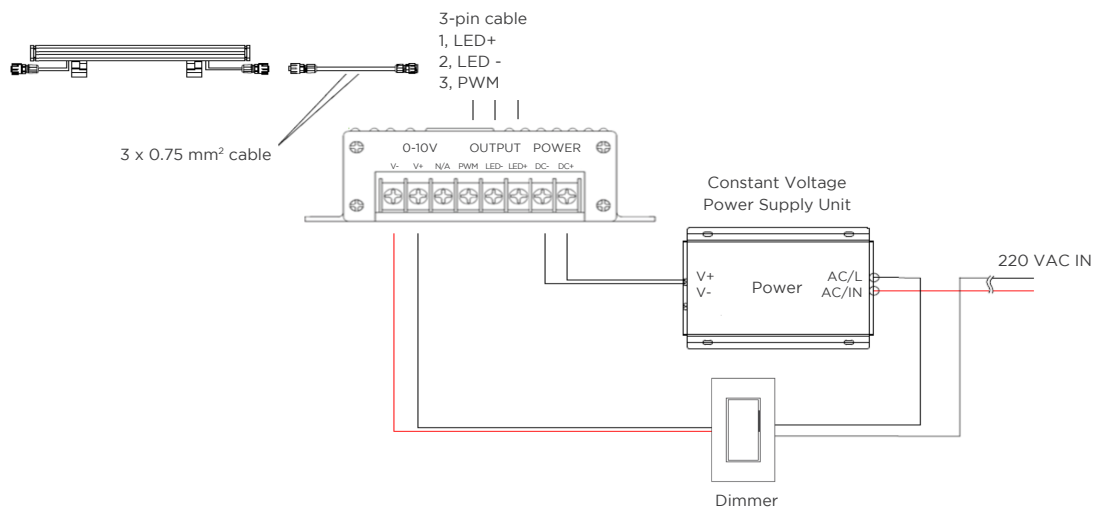
CASE 1.



CASE 2.

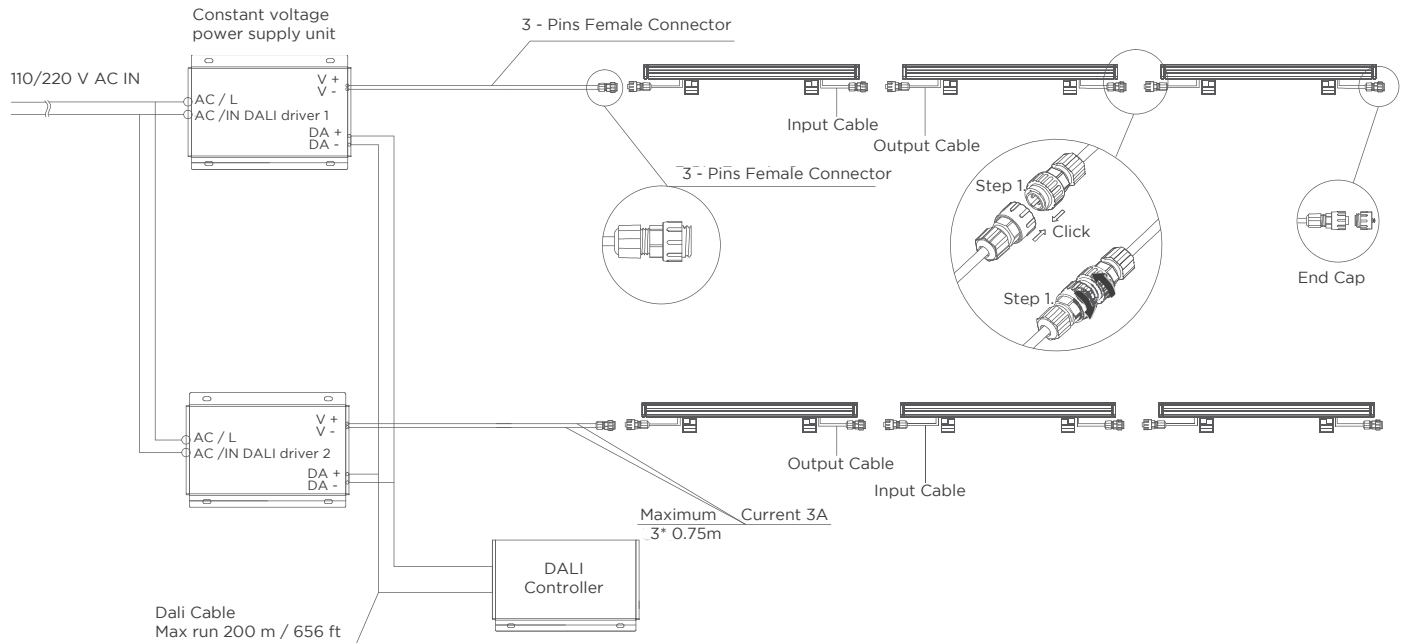


0-10V DIMMING:



## CONNECTION

### DALI DIMMING:



### CONNECTORS:

