



Date \_\_\_\_\_ Project \_\_\_\_\_

Notes \_\_\_\_\_

**ARMOR SERIES MOUNTING ARMS**

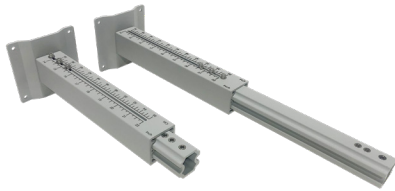
Our heavy-duty aluminum mounting arms are designed to hold your linear fixtures firmly in place. Mini, Nano and Atom linear fixtures use tiltable stands and optic louvers to set custom beam angles – but you can also lock your tiltable stands into our Armor Series Mounting Arms to secure the look you want. It’s easy to make changes, too. Available in two adjustable sizes, these sturdy mounting arms can hold your fixtures from 6” to 22” away from the lighting surface. Level up your lighting and stabilize your wall washers and grazers with the Armor Series Mounting Arm.

- Powder coated heavy duty aluminum
- 2 adjustable sizes for outdoor/indoor use
- 6-9 in. (small) and 14-22 in. (large)
- Supports linear wall washers and grazers



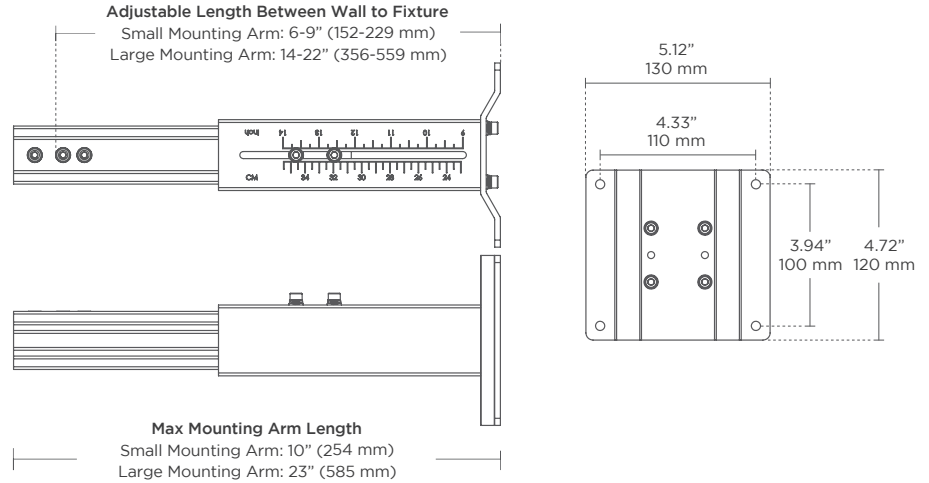
**Mounting Arms**

Small Mounting Arm Part Number: ARMORMNT0609  
Large Mounting Arm Part Number: ARMORMNT1422



**Armor Series Mounting Arm**

Adjustable mounts (in 3 sizes) help set desired angle and distance from lighting surface



**ORDERING GUIDE**

**Part Numbers**

- ARMORMNT0609 - Small Mounting Arm 6-9 in. (152-229 mm)  
ARMORMNT1422 - Large Mounting Arm 14-22 in. (356-559 mm)