

ARMOR SERIES | NANO EXTERIOR LINEAR FIXTURES

The NANO Linear is the perfect fixture where minimal space and high output and beam control are needed. With 3 different options for lensing, 6 different options for color temperature and 3 different lengths, the NANO can be tailored for any application. An outdoor IP66 rated fixture, use it to highlight architectural details or navigate small ledges and locations where space is at a premium. Armor Series NANO fixtures come with 3-year warranty.

GEL-FLUSH™ TECHNOLOGY

The NANO is now manufactured with our Gel-Flush™ Technology. This proprietary innovation prevents breaches from any weather-related elements. **GENLED Acolyte®** exterior products are guaranteed to never leak, condensate, or be breached by any environmental elements. This results in a clear and unobstructed beam of light from our fixtures. No more water beads changing and/or refracting the specified beam angles!

Applications:

Commercial Museums
Entertainment Public Spaces



ORDERING GUIDE

Category	CRI	Voltage	Wattage	Color Temperature		FWHM Beam Angle
NANO						
NANO - Armor Nano	80 - 80+ CRI	24 - 24VDC	3 - 3 W (7.2 in. / 182mm)	27- -2700K	40 - 4000K	25X35 - 25° X 35°
	90 - 90+ CRI		9 - 9 W (19.7 in. / 500mm)	30 - 3000K	50 - 5000K	30 - 30°
			18 - 18 W (39.4 in. / 1000mm)	35 - 3500K	60 - 6000K	55 - 55°

Mounting Option	Dimming
SI - Snap-In	0-10DA - 0-10V or DALI dimmable
TS - Tilttable Stand	TRI - Triac dimmable
	(Use TRI model for non-dimming. Triac model is compatible with Acolyte MLV or Universal drivers.)

DRIVERS:

96W Non-dimming Driver + Dimming Module
(Use with 0-10V model)



Driver Part No.: DRVW2496
Dimming Module Part No.: LVDIMMOD0-10PWM
Note: The output of each dimming module is limited to 132W.

60W & 96W Magnetic Driver
(Use with Triac model)



60W Part No.: DRVWDIM2460
96W Part No.: DRVWDIM24100

60W & 96W Universal ELV Drivers
(Use with Triac model)



60W Part No.: DRVW2460ELV
96W Part No.: DRVW2496ELV

OPTIONAL ACCESSORIES:

1.) Armor Series Mounting Arms:

Small: ARMORMNT0609
Large: ARMORMNT1422

2.) Symmetric Louver:

NANOLUV185 (185mm)
NANOLUV500 (500mm)
NANOLUV1000 (1000mm)

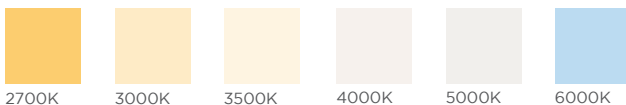
3.) 2 Pin Male to Female Jumper Cable:

NANOJUMPMF1000 (1000mm)
NANOJUMPMF2000 (2000mm)

4.) 2 Pin Female Cable to Bare Wire:

NANOCBLFB300 (300mm)
NANOCBLFB500 (500mm)
NANOCBLFB1000 (1000mm)
NANOCBLFB2000 (2000mm)

AVAILABLE COLOR TEMPERATURES



SPECIFICATIONS

Operating Voltage	24V DC								
Length	7.2 in. / 182 mm			19.7 in. / 500 mm			39.4' in. / 1000 mm		
Power Consumption	3 W			9 W			18 W		
LEDs per Fixture	6 LEDs			15 LEDs			30 LEDs		
Amperage	0.125 A			0.375 A			0.75 A		
Max. Run Length	Up to 14 fixtures			Up to 6 fixtures			Up to 4 fixtures		
Color Temperature	2700K, 3000K, 3500k, 4000K, 5000K, 6000K								
LED Beam Angle	30°	55°	25°x35°	30°	55°	25°x35°	30°	55°	25°x35°
Lumen Output / Foot	355	359	352	355	359	352	355	359	352
Total Lumens	212	214	210	582.3	588.7	577.1	1164.6	1177.4	1154.2
Max. Run Length	Up to 14 fixtures			Up to 6 fixtures			Up to 4 fixtures		
Weight	0.77 lb / 0.35kg			1.65 lb / 0.75kg			3.3 lb / 1.5kg		
Control System	0-10V, Dali								
CRI	80+ or 90+								
LED Binning (SDCM)	3-step (80 CRI) or 2-step (90 CRI)								
Dimming Options	0-10V, DALI								
Binning Tolerance	+/-100K								
Ambient Temperature	-40° F to 122° F (-40° C to 50° C)								
Housing / Lens	Housing: Extruded Aluminium / Lens: Clear UV Protected PMMA Cover: Tempered Glass End Caps: Extruded Aluminium / Brackets: Extruded Aluminium Housing, bracket, end cap material - 6063 high density aluminum alloy								
Connector	2 pin power connector								
Cable Length	11.81 in. / 300 mm								
Protection Rating	IP66								
Impact Rating	IK08								
Mounting Options	Snap-In Clip, Tilttable Stand (140° adjustable), Mounting Arms (available in 2 different sizes)								
Lamp Life	50,000 hours								
Certifications	CE, ETL / Luminaires - UL 1598, 3rd Ed., issued September 17, 2008, Rev. October 17, 2012 / Luminaires - CSA C22.2 No.250.0-08, 3rd Ed., issued September 17, 2008, Rev. October 17, 2012 (R2013)								
Fixture Color Finish	Anodized Silver								

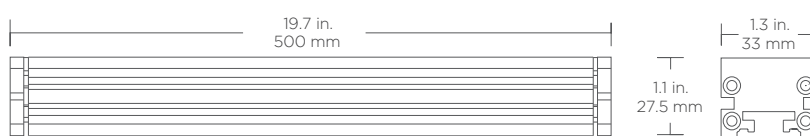
* ALL LUMEN DATA IS FROM 2700K 80 CRI FIXTURES

DIMENSIONS

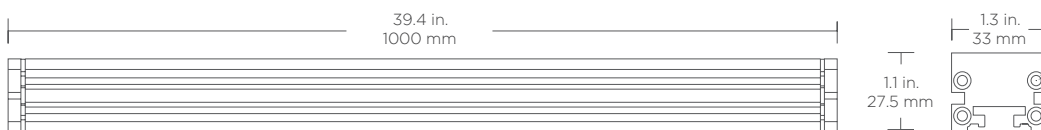
7.17 in. / 182 mm:



19.7 in. / 500 mm:



39.4 in. / 1000 mm:

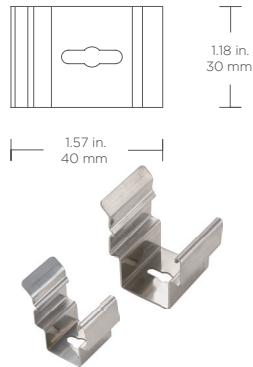
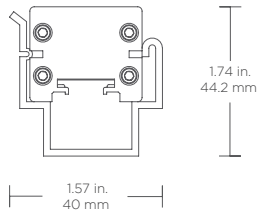


MOUNTING HARDWARE / ACCESSORIES

MOUNTING HARDWARE

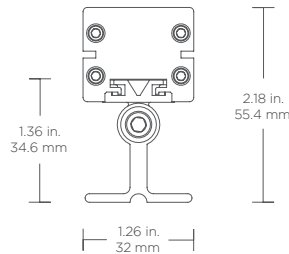
Snap-in Clip

For narrow installations where mounting clips need to be installed first

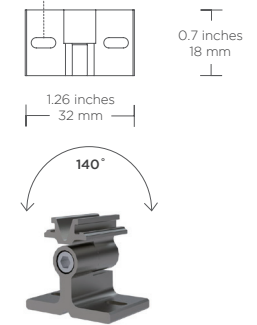


Tilttable Stand

For adjustable mounting angles

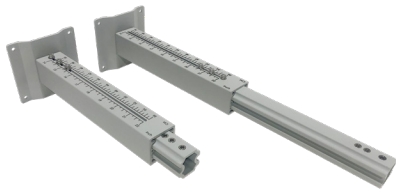


R 0.09" (2.29 mm) Thru



Mounting Arms

Small Mounting Arm Part Number: ARMORMNT0609
Large Mounting Arm Part Number: ARMORMNT1422

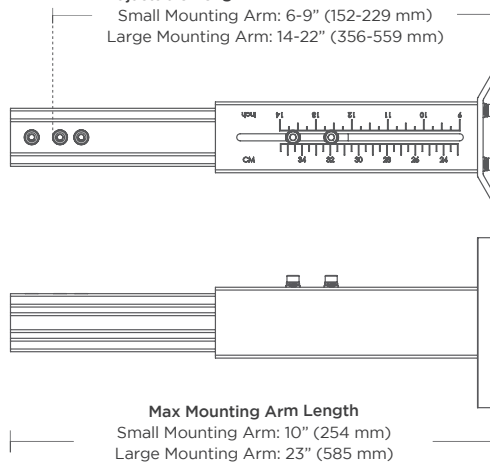


Armor Series Mounting Arm

Adjustable mounts (in 3 sizes) help set desired angle and distance from lighting surface

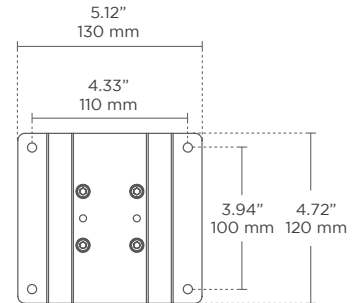
Adjustable Length Between Wall to Fixture

Small Mounting Arm: 6-9" (152-229 mm)
Large Mounting Arm: 14-22" (356-559 mm)



Max Mounting Arm Length

Small Mounting Arm: 10" (254 mm)
Large Mounting Arm: 23" (585 mm)



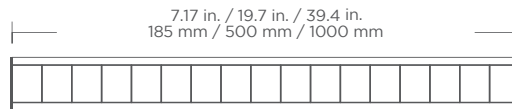
ACCESSORIES

Louver

Part Number: NANOLOUV

For glare reduction
Note: This will affect beam angle

NANOLOUV185 (185mm)
NANOLOUV500 (500mm)
NANOLOUV1000 (1000mm)



Side View

Not recommended for exterior applications

2 Pin Female Cable To Bare Wire

Part Number: NANOCLFB

To bare wire for incoming power

NANOCLFB300 (300mm)
NANOCLFB500 (500mm)
NANOCLFB1000 (1000mm)
NANOCLFB2000 (2000mm)



2 Pin Male To Female Jumper Cable

Part Number: NANOJUMPMF

To connect 2 pin male connector to 2 pin female connector

NANOJUMPMF1000 (1000mm)
NANOJUMPMF2000 (2000mm)



INCLUDED IN BOX

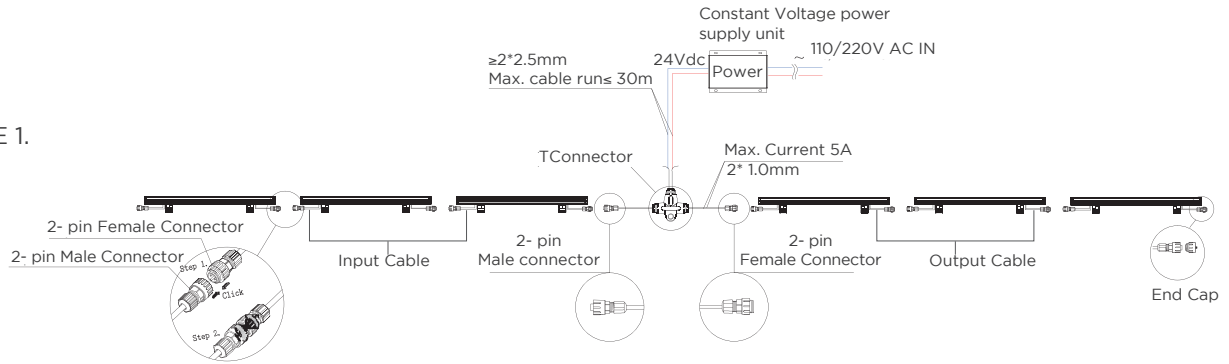


Fixture with 19.7 in. / 500mm input/output cables
+ 2 pin connectors

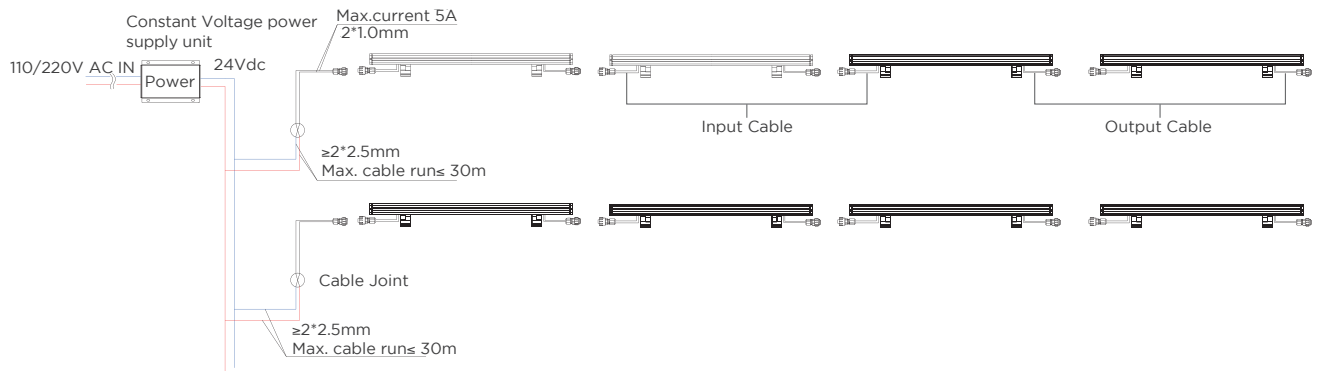
WIRING DIAGRAMS

NON-DIMMING:

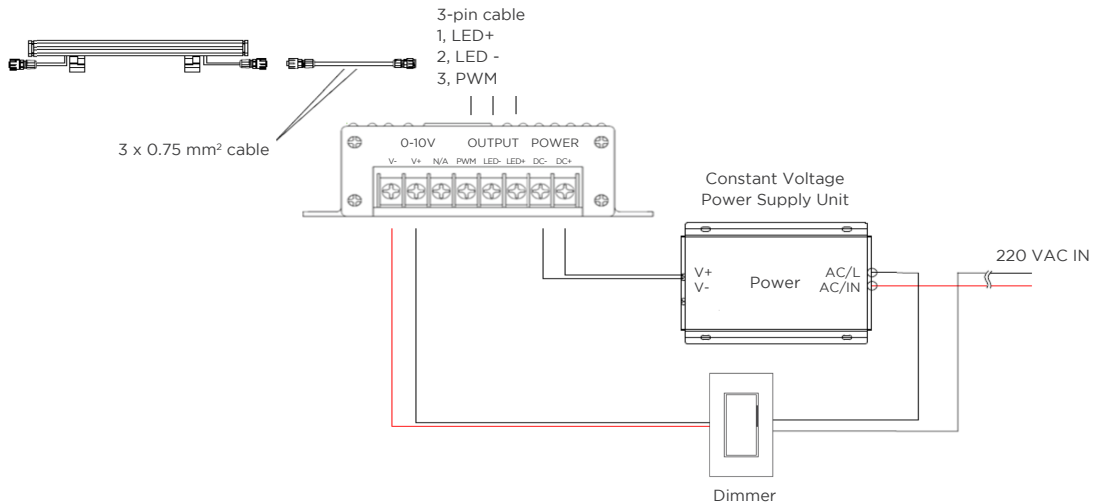
CASE 1.



CASE 2.

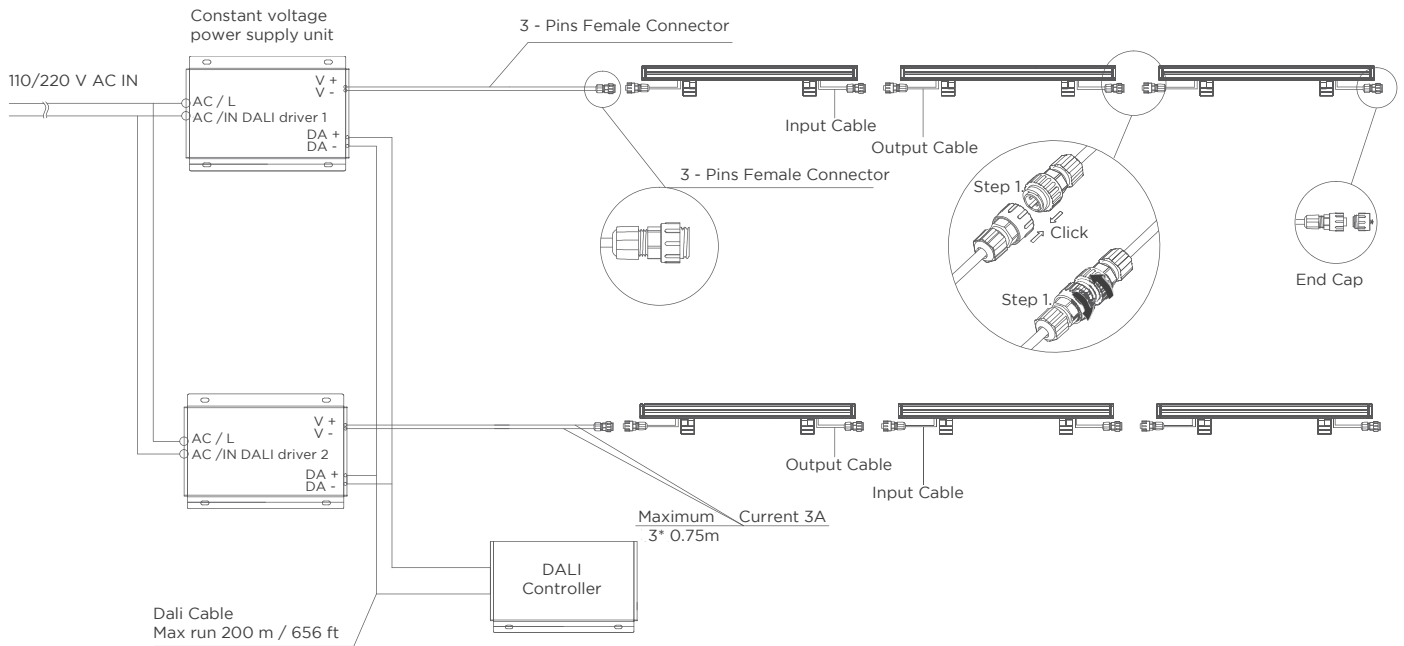


0-10V DIMMING:



CONNECTION

DALI DIMMING:



CONNECTORS:

