

NEON CONTOUR PLUS

This bendable, waterproof silicone fixture features all the benefits of modern LEDs while creating the classic look of neon tubes. Available in static white, static colors, variable white, RGBW and RGBA options, our Neon Contour Plus is designed with a larger profile to brave the elements in façade lighting and lettering. It's like neon, but better – and bigger!

- Flexible silicone LED tube creates vivid light and bold statements
- Waterproof and UV resistant
- Unique rounded design helps create signature styles
- 110°
- Assembled in U.S.

Applications:

Commercial Hospitality Residential
 Entertainment Museums Retail / Signage
 Healthcare Public Spaces



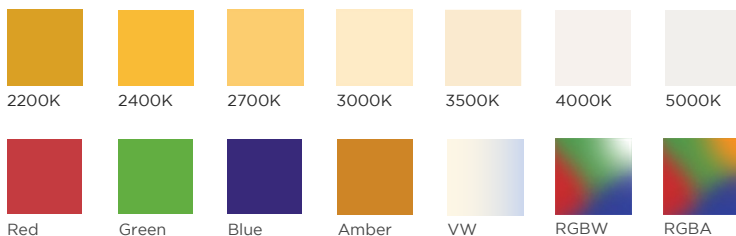
ORDERING GUIDE

Category	Wattage & Color		Power Feed Direction
NLCP			
NLCP - Neon Contour Plus	5.022 - 5.0 W/ft 2200K	5.0R - 5.0 W/ft Red	E - End Feed
	5.024 - 5.0 W/ft 2400K	5.0G - 5.0 W/ft Green	B - Bottom Feed
	5.027 - 5.0 W/ft 2700K	5.0B - 5.0 W/ft Blue	L - Left Side Feed
	5.030 - 5.0 W/ft 3000K	5.0A - 5.0 W/ft Amber	R - Right Side Feed
	5.035 - 5.0 W/ft 3500K	5.0VW - 5.0 W/ft Variable White	
	5.040 - 5.0 W/ft 4000K	4.4RGB35 - 4.4 W/ft Red, Green, Blue + 3500K	
	5.050 - 5.0 W/ft 5000K	4.4RGBA - 4.4 W/ft Red, Green, Blue, Amber	

Mounting

- 1. Aluminum Mounting Clip**
Part #: NLCPPLUSMOUNTCLIP
- 2. Neon Contour Plus Mounting Channel**
Sold by the foot, up to 6 ft 6 in. / 2 m
Part #: NLCPCH

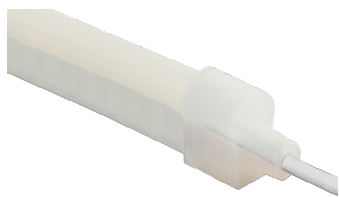
AVAILABLE COLORS AND COLOR TEMPERATURES



POWER FEED OPTIONS / SPECIFICATIONS / USAGE GUIDELINES

SPECIFICATIONS	NEON CONTOUR PLUS
Operating Voltage	24 V
Power Consumption	Static White / Static Colors / Variable White: 5.0 W/ft (16.4 W/m) RGBW, RGBA: 4.4 W/ft (14.43 W/m)
Protection Rating	IP68
Beam Angle	110°
Dimming	ELV / MLV / 0-10 Volt / DMX / Lutron A-Series 1% dimming LED drivers
Operating Temperature	-40° F to 140° F (-40° C to 60° C)
Color Temperatures / Colors	2200K, 2400K, 2700K, 3000K, 3500K, 4000K, 5000K, Red, Green, Blue, Amber, Variable White, RGBW (3500K), RGBA
Lamp Life	50,000 Hours
Length	Static White at 3500K: Up to 20 ft (6 m) 1.97 in. (50 mm) increments (Not Field Cuttable) Static Color Red & Green: Up to 32.8 ft (10 m) 1.97 in. (50 mm) increments (Not Field Cuttable) Static Color Blue: Up to 20 ft (6 m) 1.97 in. (50 mm) increments (Not Field Cuttable) Static Color Amber: Up to 32.8 ft (10 m) 1.97 in. (50 mm) increments (Not Field Cuttable) Variable White (all on): Up to 21 ft (6.5 m) 1.97 in. (50 mm) increments (Not Field Cuttable) RGBW: Up to 33 ft (10 m) (Not Field Cuttable)
Power Cable Length	Standard: 12 in. (304.8 mm) / Custom: up to 20 ft (6 m)
UV Resistant	UV tested in accordance with ISO 4892-3 with no visible change on the appearance of the sample
Minimum Bend Diameter	4 in. (100 mm)
CRI (white)	90+ for all Color Temperatures
Lumens	5.0 Static White 3500K: 139.51 lm/ft (457.6 lm/m)
	5.0 Static Color Red: 44.2 lm/ft (145 lm/m) / Green: 152.38 lm/ft (499.8 lm/m) / Blue: 26.7 lm/ft (87.6 lm/m) / Amber: 22.44 lm/ft (73.6 lm/m)
	5.0 Variable White At 2200K: 45.6 lm/ft (149.6 lm/m) / At 6100K: 55.73 lm/ft (182.8 lm/m) / All LEDs at 100%: 98.17 lm/ft (322 lm/m)
	4.4 RGBW Red: 8.41 lm/ft (27.6 lm/m) / Green: 23.66 lm/ft (77.6 lm/m) / Blue: 4.57 lm/ft (15 lm/m) / White: 65.37 lm/ft (214.4 lm/m) All LEDs at 100%: 60.06 lm/ft (197 lm/m)
	4.4 RGBA Please consult factory for data

POWER FEED OPTIONS



End Feed - Power From End



Left Side Feed - Power From Left Side



Right Side Feed - Power From Right Side



Bottom Feed - Power From Bottom

USAGE GUIDELINES

- When installing this product take into account the surface temperature of the material this product is mounted to. Many building surfaces which are exposed to direct sunlight exceed the 70° C/158° F maximum that our product is rated for. High-risk locations like this should be avoided.
- This product is not intended to be submerged in pools and fountains and does not carry UL 676 certification to do so. Available for download at www.GENLEDBrands.com/Acolyte
- Compatible with a wide variety of control products including the entire line of Lutron dimming systems.
- For use with Acolyte drivers, triac dimming modules, and 0-10 modules.
- Use with non-Acolyte triac, MLV or ELV drivers is not supported or warranted
- Due to the cuttable points inside, this product's cuttable lengths are generally longer or shorter than the customer requested length. Unless specified, this product is factory cut at the shorter cuttable point
- This product can be used in wet, outdoor locations around swimming pools and spa tubs, but not submerged in swimming pools and spa tubs.
- We reserve the right to make changes to product lineup, specifications, design and finishes at any time without notice.

Acolyte does not warrant or represent that this information is free from errors or omission. The information may change without notice and Acolyte is not in any way liable for the accuracy of any information printed and stored or in any way interpreted or used.

DIMENSIONS / DIAGRAMS

DIMENSIONS		NEON CONTOUR PLUS
IP68	Assembled Width	0.49 in. (12.4 mm)
	Length	Varies (see dimensions on pg. 2)
	Assembled Height	1 in. (25.4 mm)



DIAGRAMS		NEON CONTOUR PLUS
TUBE		<p>TUBE OUTER HEIGHT: 0.88 in. / 22.35 mm TUBE OUTER WIDTH: 0.39 in. / 10 mm</p> <p>END CAP HEIGHT: 0.98 in. / 24.89 mm END CAP WIDTH: 0.47 in. / 11.94 mm</p>
MOUNTING CLIP		<p>MOUNTING CLIP OVERALL HEIGHT: 0.52 in. / 13.5 mm MOUNTING CLIP LENGTH: 1.2 in. / 30.48 mm MOUNTING CLIP WIDTH: 0.49 in. / 12.4 mm MOUNTING CLIP SCREW TAP DIAMETER: 0.11 in / 2.8 mm MOUNTING CLIP THICKNESS: 0.05 in / 1.3 mm MOUNTING CHANNEL: Sold by the foot, up to 6 ft 6 in. / 2 m (Part #: NLCPCH)</p> <p>Use (2) mounting clips per foot unless specific shapes require more *Recommended mounting clip screw size: #4-40</p>

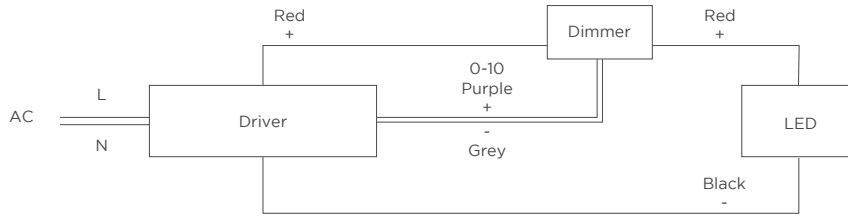
DISCLAIMER

When installing this product take into account the surface temperature of the material this product is mounted to. Many building surfaces which are exposed to direct sunlight exceed the 70° C/158° F maximum that our product is rated for. High-risk locations like this should be avoided.

This product is not intended to be submerged in pools and fountains and does not carry UL 676 certification to do so.

WIRING DIAGRAMS

0-10V



WIRE COLORS PER RIBBONLYTE COLOR

STATIC WHITE + STATIC COLOR

Red Wire (+) Positive
Black Wire (-) Negative

RGBW/A

Black Wire (+) Positive
Red Wire (-) goes to Red Channel
Green Wire (-) goes to Green Channel
Blue Wire (-) goes to Blue Channel
White Wire (-) goes to White Channel

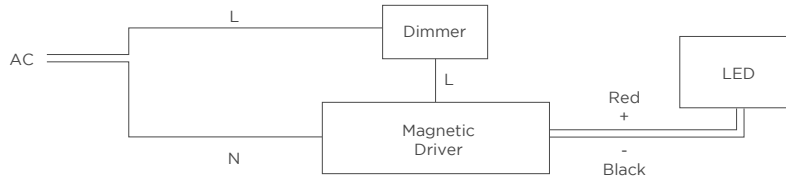
VARIABLE WHITE

Black Wire (+) Positive
Red Wire (-) goes to Warm White Channel
Green Wire (-) goes to Cool White Channel

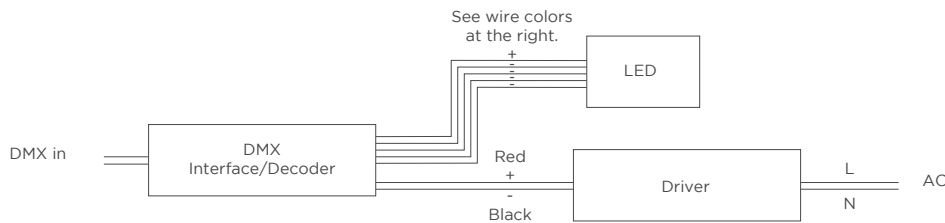
WARM DIM

Red Wire (-) goes to Warm White Channel
Blue Wire (-) goes to Cool White Channel
Black Wire (+) goes to Warm White Channel
Green Wire (+) goes to Cool White Channel

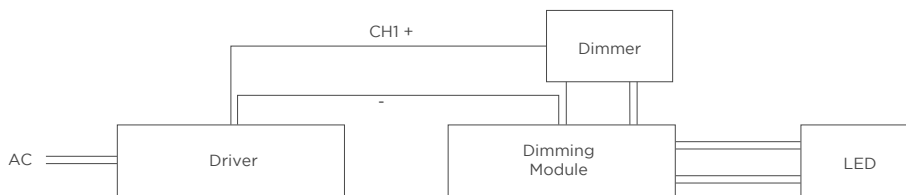
MAGNETIC + ELV



DMX



WARM DIM



2-CHANNEL VARIABLE WHITE DIMMING

