

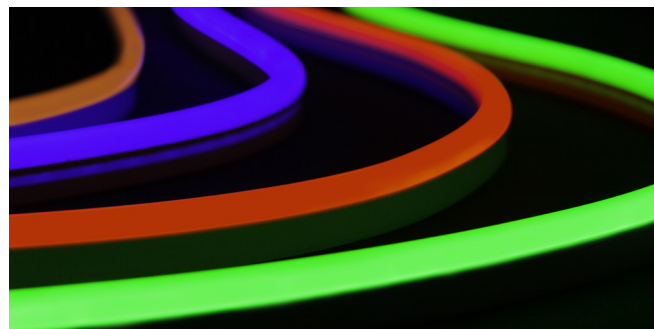
NEON CONTOUR

It's like neon, but better! This bendable, waterproof silicone fixture uses a rounded lens that gives modern LEDs the classic glow of neon tubes. Available in static white, static colors, variable white, RGBW and RGBA options, our Neon Contour is designed to brave the elements in façade lighting and lettering.

- Flexible silicone LED tube creates vivid light and bold statements
- Waterproof and UV resistant
- Unique rounded design helps create signature styles
- 110° beam angle
- Assembled in U.S.

Applications:

Commercial	Hospitality	Residential
Entertainment	Museums	Retail / Signage
Healthcare	Public Spaces	



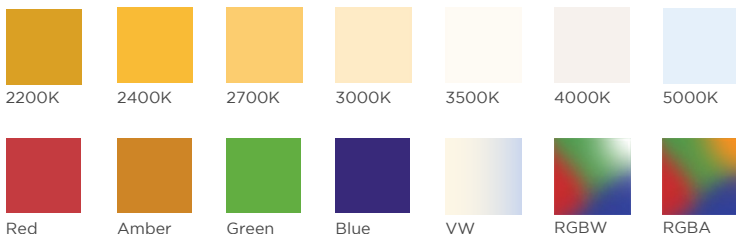
ORDERING GUIDE

Category	Wattage & Color	Power Feed Direction
NLC		E
NLC - Neon Contour	3.022 - 3.0 W/ft 2200K 3.0R - 3.0 W/ft Red 3.024 - 3.0 W/ft 2400K 3.0G - 3.0 W/ft Green 3.027 - 3.0 W/ft 2700K 3.0B - 3.0 W/ft Blue 3.030 - 3.0 W/ft 3000K 3.0A - 3.0 W/ft Amber 3.035 - 3.0 W/ft 3500K 3.0VW - 3.0 W/ft Variable White 3.040 - 3.0 W/ft 4000K 4.4RGB35 - 4.4 W/ft Red, Green, Blue + 3500K 3.050 - 3.0 W/ft 5000K 4.4RGBA - 4.4 W/ft Red, Green, Blue, Amber	E - End Feed

Mounting

- 1. Aluminum Mounting Clip**
Part #: NLCMOUNTCLIP
- 2. Neon Contour Mounting Channel**
Sold by the foot, up to 6 ft 6 in. / 2 m
Part #: NLCCH

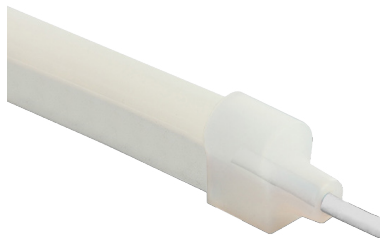
AVAILABLE COLORS AND COLOR TEMPERATURES



POWER FEED OPTIONS / SPECIFICATIONS / USAGE GUIDELINES

SPECIFICATIONS	NEON CONTOUR
Operating Voltage	24 V
Power Consumption	Static White, Static Colors, Variable White: 3.0 W/ft (9.8 W/m) RGBW, RGBA: 4.4 W/ft (14.4 W/m)
Protection Rating	IP68
Beam Angle	110°
Dimming	ELV / MLV / 0-10 Volt / DMX / Lutron Hi-Lume 1% dimming LED drivers
Operating Temperature	-40° F to 140° F (-40° C to 60° C)
Color Temperatures / Colors	2200K, 2400K, 2700K, 3000K, 3500K, 4000K, 5000K, Red, Green, Blue, Amber, Variable White, RGBW (3500K), RGBA
Lamp Life	50,000 Hours
Length	Static White / Static Color / Variable White: Up to 32 ft. 8 in. (10 m) 1.97 in (50 mm) increments
Power Cable Length	Standard: 12 in. (304.8 mm) / Custom: up to 20 ft (6 m)
UV Resistant	UV tested in accordance with ISO 4892-3 with no visible change on the appearance of the sample
Minimum Bend Diameter	2 in (50 mm) Not Field Cuttable
CRI (white)	90+ for all Color Temperatures
Lumens	3.0 Static White 3500K: 89.88 lm/ft (294.8 lm/m)
	3.0 Static Color Red: 31.28 lm/ft (102.6 lm/m) / Green: 151.5 lm/ft (496.9 lm/m) / Blue: 20.12 lm/ft (66 lm/m) / Amber: 18.96 lm/ft (62.19 lm/m)
	3.0 Variable White At 2200K: 27.25 lm/ft (89.38 lm/m) / At 6100K: 32.87 lm/ft (107.81 lm/m) / All LEDs at 100%: 60.06 lm/ft (197 lm/m)
	4.4 RGBW Red: 7.8 lm/ft (25.6 lm/m) / Green: 21.89 lm/ft (71.8 lm/m) / Blue: 4.15 lm/ft (13.6 lm/m) / White: 25.61 lm/ft (84 lm/m) All LEDs at 100%: 56.65 lm/ft (185.8 lm/m)
	4.4 RGBA Please consult factory for data

POWER FEED OPTIONS



End Feed - Power From End

USAGE GUIDELINES

- When installing this product take into account the surface temperature of the material this product is mounted to. Many building surfaces which are exposed to direct sunlight exceed the 70° C/158° F maximum that our product is rated for. High-risk locations like this should be avoided.
- This product is not intended to be submerged in pools and fountains and does not carry UL 676 certification to do so. Available for download at: www.GENLEDBrands.com/Acolyte
- Compatible with a wide variety of control products including the entire line of Lutron dimming systems.
- For use with Acolyte drivers, triac dimming modules, and 0-10 modules.
- Use with non-Acolyte triac, MLV or ELV drivers is not supported or warrantied
- Due to the cuttable points inside, this product's cuttable lengths are generally longer or shorter than the customer requested length. Unless specified, this product is factory cut at the shorter cuttable point
- This product can be used in wet, outdoor locations around swimming pools and spa tubs, but not submerged in swimming pools and spa tubs.
- We reserve the right to make changes to product lineup, specifications, design and finishes at any time without notice.

Acolyte does not warrant or represent that the information is free from errors or omission. The information may change without notice and Acolyte is not in any way liable for the accuracy of any information printed and stored or in any way interpreted or used.

DIMENSIONS / DIAGRAMS

DIMENSIONS		NEON CONTOUR
IP68	Assembled Width	0.37 in (9.4 mm)
	Length	Varies (see dimensions on pg. 2)
	Assembled Height	0.79 in (20.15 mm)



DIAGRAMS		NEON CONTOUR
TUBE		<p>TUBE OUTER HEIGHT: 0.63 in / 16 mm TUBE OUTER WIDTH: 0.32 / 8.13 mm</p> <p>END CAP HEIGHT: 0.79 in / 20 mm END CAP WIDTH: 0.44 in / 11.18 mm</p>
MOUNTING CLIP		<p>MOUNTING CLIP OVERALL HEIGHT: 0.45 in / 11.43 mm MOUNTING CLIP LENGTH: 0.79 in / 20 mm MOUNTING CLIP WIDTH: 0.37 in / 9.4 mm MOUNTING CLIP SCREW TAP DIAMETER: 0.11 in / 2.8 mm MOUNTING CLIP THICKNESS: 0.05 in / 1.3 mm MOUNTING CHANNEL: Sold by the foot, up to 6 ft 6 in. / 2 m (Part #: NLCCH)</p> <p>Use (2) mounting clips per foot unless specific shapes require more *Recommended mounting clip screw size: #4-40</p>

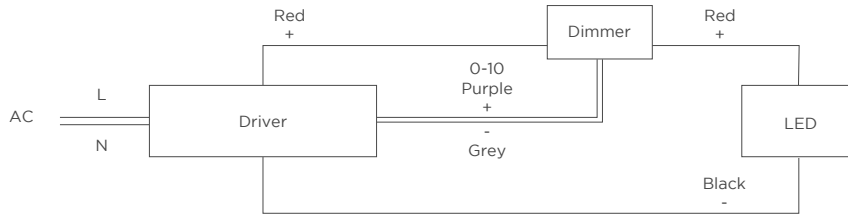
DISCLAIMER

When installing this product take into account the surface temperature of the material this product is mounted to. Many building surfaces which are exposed to direct sunlight exceed the 70° C/158° F maximum that our product is rated for. High-risk locations like this should be avoided.

This product is not intended to be submerged in pools and fountains and does not carry UL 676 certification to do so.

WIRING DIAGRAMS

0-10V



WIRE COLORS PER RIBBONLYTE COLOR

STATIC WHITE + STATIC COLOR

Red Wire (+) Positive
Black Wire (-) Negative

RGBW/A

Black Wire (+) Positive
Red Wire (-) goes to Red Channel
Green Wire (-) goes to Green Channel
Blue Wire (-) goes to Blue Channel
White Wire (-) goes to White Channel

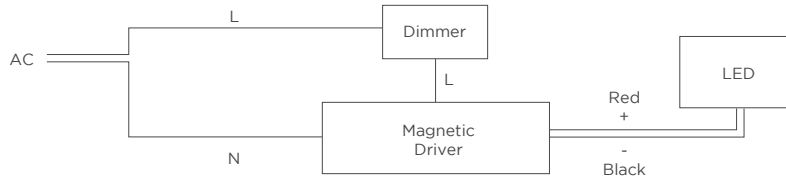
VARIABLE WHITE

Black Wire (+) Positive
Red Wire (-) goes to Warm White Channel
Green Wire (-) goes to Cool White Channel

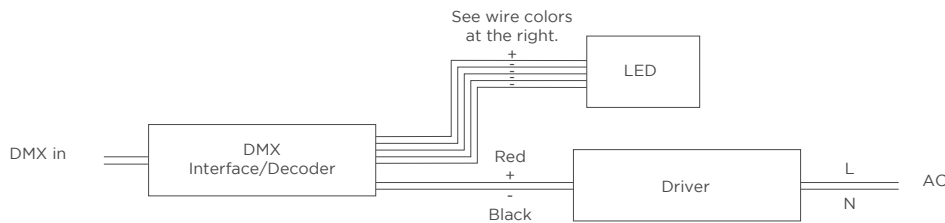
WARM DIM

Red Wire (-) goes to Warm White Channel
Blue Wire (-) goes to Cool White Channel
Black Wire (+) goes to Warm White Channel
Green Wire (+) goes to Cool White Channel

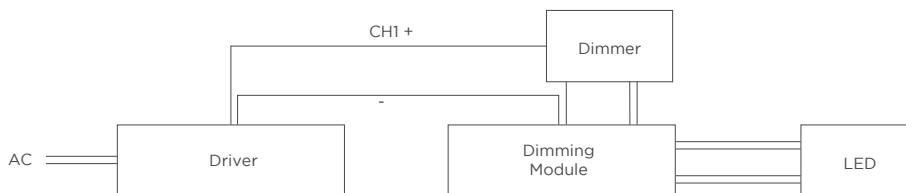
MAGNETIC + ELV



DMX



WARM DIM



2-CHANNEL VARIABLE WHITE DIMMING

