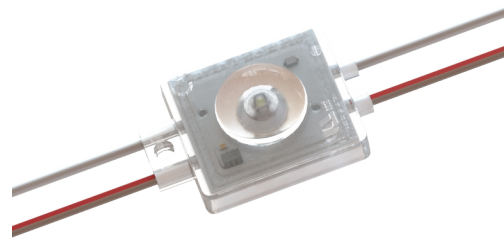




ULTRA 400 Series - This new comprehensive option for super low-profile 1.2" (30mm) to 4" (100mm) depths, is available in three lumen outputs.

**Applications:**

- Wide stroke channel letters
- Shallow to medium box signs
- Small to medium cloud signs
- Applications starting at 3" (75 mm) depth



**ORDERING GUIDE**

Part Number	White Color Temp.	Module Spacing (mm)	Number of Modules		Nominal Light Output (lm)*		
			Per Foot	Per Meter	Per Module	Per Foot	Per Meter
LS-U470-75K-B150-A	7500K	150	2	6.7	67	134	449
LS-U470-65K-B150-A	6500K	150	2	6.7	70	140	469
LS-U470-57K-B150-A	5700K	150	2	6.7	67	134	449
LS-U470-50K-B150-A	5000K	150	2	6.7	67	134	449
LS-U470-40K-B150-A	4000K	150	2	6.7	67	134	449
LS-U470-30K-B150-A	3000K	150	2	6.7	63	126	422
LS-U470-27K-B150-A	2700K	150	2	6.7	63	126	422

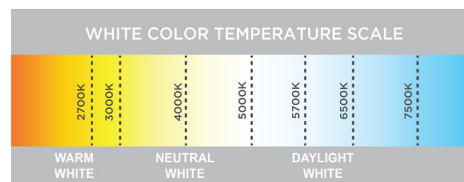
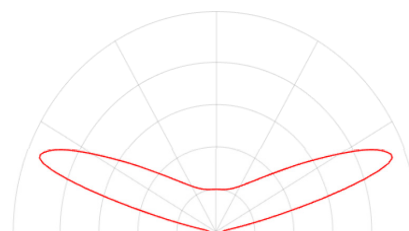
\* ± 10%

**PRODUCT RATINGS**

Luminous Efficacy	106 lm/W @ 6500K
Wattage per Module	0.66 W Nominal 0.69 W Maximum
Input Voltage	12 V DC
Input Current	0.055 A/ module
Power Supply Loading	84 modules per 60 W
Ingress Protection	IP68
Operating Temperature	-40° — +140° F (-40° — +60° C)
L70 Lifetime @ 60° C	50,000 Hours
Warranty	9 Year Standard Warranty

**LUMINOUS INTENSITY DISTRIBUTION**

400 Series Batwing Beam Pattern



**MODULE DIMENSIONS**

Part Number	Length (in/mm)	Width (in/mm)	Height (in/mm)
LS-U470-xxK-B150-A	1.52/38.5	1.03/26.2	0.42/10.6

REV: 03MAY2021  
Data sheet subject to change without notice.



**POWER SUPPLY LOADING**

LS-U470-xxK-B150-A					
	Power Supply	Max. # of Modules Per Continuous String	Total # of Modules Per Power Supply <sup>1</sup>	Total # of Feet	Total # of Meters
UL CLASS 2	12 W	17	17	8.4	2.6
	15 W	21	21	10.3	3.2
	35 W	49	49	24.1	7.4
	60 W	77	84	41.3	12.6
	180 W <sup>2</sup>	77	252	124.0	37.8
UL CLASS 1	100 W	77	136	66.9	20.4
	150 W	77	205	100.9	30.8
	180 W	77	245	120.6	36.8
	220 W	77	300	147.6	45.0

Note 1. The number of modules in each of the parallel strings should not exceed the specified maximum.  
2. 3 - 60 Watt Channels

**LAYOUT GUIDE\***

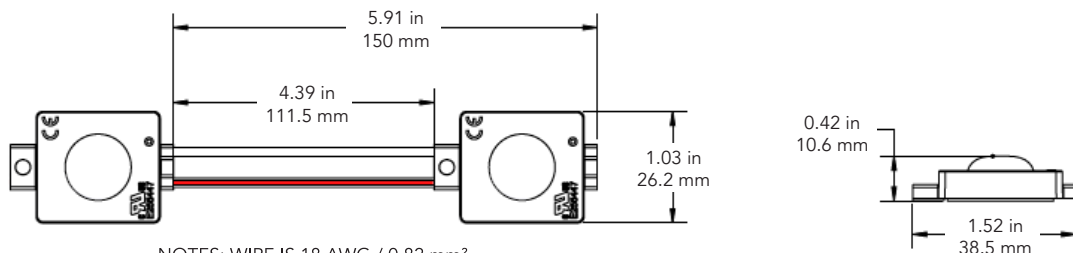
Channel Depth (in.)	Single Row		Multiple Rows		Channel Depth (mm)	Single Row		Multiple Rows	
	Max. Stroke	Module Spacing	Row Spacing	Module Spacing		Max. Stroke	Module Spacing	Row Spacing	Module Spacing
3	9.5	6	8.5	6	75	240	150	215	150
4	14	6	12	6	100	355	150	305	150

\*Density guide designed to maintain a minimum of 600 lux for a single row or 800 lux for multiple rows at sign face (7328 white).

**SHIPPING INFORMATION**

Module Type	Specs	Packaging Quantity			Carton Weight	Box Dimensions			Carton Dimensions			
		Per Bag	Per Box	Per Carton		W	D	H	W	D	H	
LS-U470-xxk-B150-A	Modules	100	500	2000	46.3 lbs	22.1	10.6	4.5	23.5	20	12	inch
	Feet	49	246	984	21 kg	560	270	115	600	510	305	mm
	Meters	15	75	300								

**DIMENSION DRAWING**



NOTES: WIRE IS 18 AWG / 0.82 mm<sup>2</sup>  
RED STRIPE (+), WHITE (-)



1. UL ONLY - These products are only suitable for connection to a UL rated Class 2 power source rated 12 Volt or less.
2. UL ONLY - These products are intended for use only when connected to a power source that complies with UL rated Class 2 voltage and energy limited circuit.
3. UL ONLY - When these units are connected to a UL rated Class 2 circuit, they are not to draw a total wattage of greater than the secondary or output rating of the UL rated Class 2 power supply.
4. These products may be secured in place in the end product by any means available.
5. These products are suitable for use in dry, damp, and wet locations. Not suitable for submersed applications.