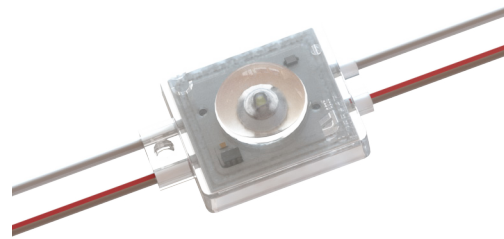


ULTRA 400 Series - This new comprehensive option for super low-profile 1.2 in. (30mm) to 4 in. (100mm) depths, is available in three lumen outputs.

**Applications:**

- Wide stroke channel letters
- Shallow to medium box signs
- Small to medium cloud signs
- Applications starting at 1.2 in. (30 mm) depth



**ORDERING GUIDE**

| Part Number           | White Color Temp. | Module Spacing (mm) | Number of Modules |           | Nominal Light Output (lm)* |          |           |
|-----------------------|-------------------|---------------------|-------------------|-----------|----------------------------|----------|-----------|
|                       |                   |                     | Per Foot          | Per Meter | Per Module                 | Per Foot | Per Meter |
| LS-U430-75K-B100-A**  | 7500K             | 100                 | 3                 | 10        | 33                         | 99       | 330       |
| LS-U430-65K-B100-A    | 6500K             | 100                 | 3                 | 10        | 34                         | 102      | 340       |
| LS-U430-57K-B100-A**  | 5700K             | 100                 | 3                 | 10        | 32                         | 96       | 320       |
| LS-U430-50K-B100-A**  | 5000K             | 100                 | 3                 | 10        | 32                         | 96       | 320       |
| LS-U430-40K-B100-A**  | 4000K             | 100                 | 3                 | 10        | 32                         | 96       | 320       |
| LS-U430-30K-B100-A**  | 3000K             | 100                 | 3                 | 10        | 30                         | 90       | 300       |
| LS-U430-27K-B100-A**  | 2700K             | 100                 | 3                 | 10        | 30                         | 90       | 300       |
| LS-U430-75K-B150-A*** | 7500K             | 150                 | 2                 | 6.7       | 33                         | 66       | 221       |
| LS-U430-65K-B150-A*** | 6500K             | 150                 | 2                 | 6.7       | 34                         | 68       | 228       |
| LS-U430-57K-B150-A*** | 5700K             | 150                 | 2                 | 6.7       | 32                         | 64       | 214       |
| LS-U430-50K-B150-A*** | 5000K             | 150                 | 2                 | 6.7       | 32                         | 64       | 214       |
| LS-U430-40K-B150-A*** | 4000K             | 150                 | 2                 | 6.7       | 32                         | 64       | 214       |
| LS-U430-30K-B150-A*** | 3000K             | 150                 | 2                 | 6.7       | 30                         | 60       | 201       |
| LS-U430-27K-B150-A*** | 2700K             | 150                 | 2                 | 6.7       | 30                         | 60       | 201       |

\*\* Limited stock

\*\*\* Consult for lead time and MOQ

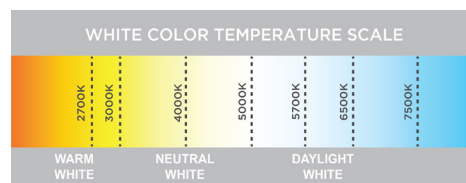
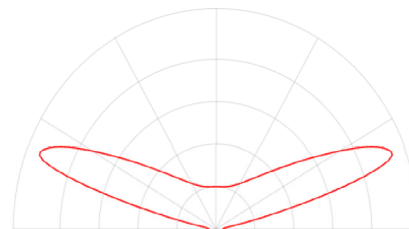
\* ± 10%

**PRODUCT RATINGS**

|                       |                                  |
|-----------------------|----------------------------------|
| Luminous Efficacy     | 113 lm/W @ 6500K                 |
| Wattage per Module    | 0.30 W Nominal<br>0.32 W Maximum |
| Input Voltage         | 12 V DC                          |
| Input Current         | 0.025 A/ module                  |
| Power Supply Loading  | 184 modules per 60 W             |
| Ingress Protection    | IP68                             |
| Operating Temperature | -40° - +140° F (-40° - +60° C)   |
| L70 Lifetime @ 60° C  | 50,000 Hours                     |
| Warranty              | 9 Year Limited Warranty          |

**LUMINOUS INTENSITY DISTRIBUTION**

400 Series Batwing Beam Pattern



**POWER SUPPLY LOADING**

| LS-U430-xxK-Bxxx-A |   |   |  |                                 |                                   |                                 |                                   |
|--------------------|---|---|--|---------------------------------|-----------------------------------|---------------------------------|-----------------------------------|
| Power Supply       | Max. # of Modules Per Continuous String (100mm spacing) | Max. # of Modules Per Continuous String (150mm spacing) | Total # of Modules Per Power Supply <sup>1</sup> | Total # of Feet (100mm spacing) | Total # of Meters (100mm spacing) | Total # of Feet (150mm spacing) | Total # of Meters (150mm spacing) |
| UL CLASS 2         | 12 W  | 36  | 36   | 36                              | 11.8                              | 3.6                             | 5.4                               |
|                    | 15 W  | 45  | 45   | 46                              | 15.1                              | 4.6                             | 6.9                               |
|                    | 35 W  | 105   | 102  | 107                             | 35.1                              | 10.7                            | 16.1                              |
|                    | 60 W  | 145   | 122  | 184                             | 60.4                              | 18.4                            | 27.6                              |
|                    | 180 W <sup>2</sup>                                      | 145   | 122  | 552                             | 181.2                             | 55.2                            | 82.8                              |
| UL CLASS 1         | 100 W   | 145   | 122  | 300                             | 98.4                              | 30.0                            | 45.0                              |
|                    | 150 W   | 145   | 122  | 450                             | 147.6                             | 45.0                            | 67.5                              |
|                    | 180 W   | 145   | 122  | 540                             | 177.2                             | 54.0                            | 81.0                              |
|                    | 220 W   | 145   | 122  | 660                             | 216.5                             | 66.0                            | 99.0                              |

Note 1. The number of modules in each of the parallel strings should not exceed the specified maximum.  
 2. 3 - 60 Watt Channels

**LAYOUT GUIDE\***

| Channel Depth (in.) | Single Row  |                | Multiple Rows |                | Channel Depth (mm) | Single Row  |                | Multiple Rows |                |
|---------------------|-------------|----------------|---------------|----------------|--------------------|-------------|----------------|---------------|----------------|
|                     | Max. Stroke | Module Spacing | Row Spacing   | Module Spacing |                    | Max. Stroke | Module Spacing | Row Spacing   | Module Spacing |
| 1.2                 | 3           | 2.5            | 2.5           | 2.5            | 30                 | 75          | 65             | 65            | 65             |
| 1.6                 | 5           | 4              | 4             | 4              | 40                 | 125         | 100            | 100           | 100            |
| 2                   | 6           | 5              | 5             | 5              | 50                 | 150         | 125            | 125           | 125            |

\*Density guide designed to maintain a minimum of 600 lux for a single row or 800 lux for multiple rows at sign face (7328 white).

**SHIPPING INFORMATION**

| Module Type        | Specs    | Packaging Quantity |       |         |       |            |       |
|--------------------|----------|--------------------|-------|---------|-------|------------|-------|
|                    |          | Per Bag            |       | Per Box |       | Per Carton |       |
| LS-U430-xxK-Bxxx-A | Spacings | 100mm              | 150mm | 100mm   | 150mm | 100mm      | 150mm |
|                    | Modules  | 100                |       | 500     |       | 2000       |       |
|                    | Feet     | 33                 | 49    | 164     | 246   | 656        | 984   |
|                    | Meters   | 10                 | 15    | 50      | 75    | 200        | 300   |

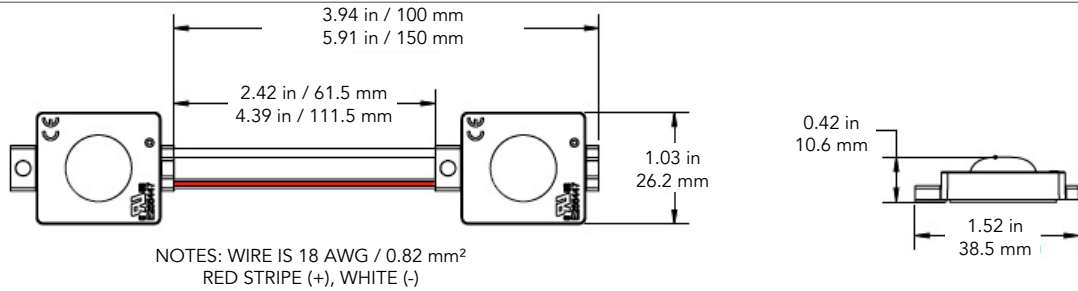
| Carton Weight | Box Dimensions |      |     | Carton Dimensions |     |     |      |
|---------------|----------------|------|-----|-------------------|-----|-----|------|
|               | W              | D    | H   | W                 | D   | H   |      |
| 46.3 lbs      | 22.1           | 10.6 | 4.5 | 23.5              | 20  | 12  | inch |
| 21 kg         | 560            | 270  | 115 | 600               | 510 | 305 | mm   |



**MODULE DIMENSIONS**

| Part Number        | Length (in/mm) | Width (in/mm) | Height (in/mm) |
|--------------------|----------------|---------------|----------------|
| LS-U430-xxK-Bxxx-A | 1.52/38.5      | 1.03/26.2     | 0.42/10.6      |

**DIMENSION DRAWING**



1. UL ONLY - These products are only suitable for connection to a UL rated Class 2 power source rated 12 Volt or less.
2. UL ONLY - These products are intended for use only when connected to a power source that complies with UL rated Class 2 voltage and energy limited circuit.
3. UL ONLY -When these units are connected to a UL rated Class 2 circuit, they are not to draw a total wattage of greater than the secondary or output rating of the UL rated Class 2 power supply.
4. These products may be secured in place in the end product by any means available.
5. These products are suitable for use in dry, damp, and wet locations. Not suitable for submersed applications.