

Rapid Channel by Acolyte

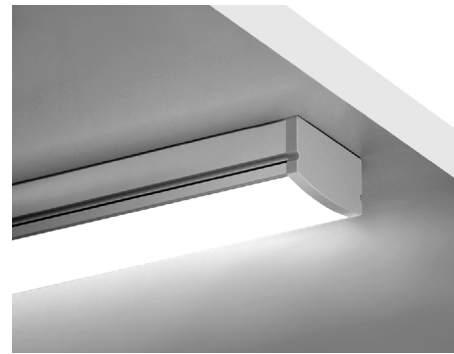


WORK WITH THE SPEED OF LIGHT

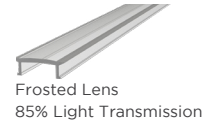
RAPID S1 CHANNEL FIXTURE

Our Rapid S1 Channel Fixture is a low-profile surface mounted channel with a 118-degree beam angle that provides a wide, even spread of light. This channel is offered with a choice of frosted or milky lenses ideal for stunning cove and toe kick applications. Create a beautiful custom fixture with Rapid S1 Channel Fixture and any of our Rapid Ribbon 95+ by Acolyte products. It ships in 48 hours or less!

- Comes in 6 ft. 6 in. (2 m) lengths
- 118° beam angle
- Frosted or Milky lens
- Sleek low profile



LENS FINISHES



Applications:

Commercial Entertainment Hospitality Museums Residential Retail Healthcare Public Spaces



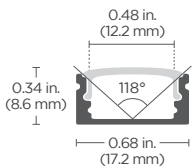
RoHS



SPECIFICATIONS

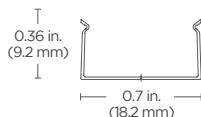
Beam Angle	118°	DIMENSIONS	
Lens Type	Frosted, Milky	Channel (W x H x Internal Width)	0.68 in. x 0.34 in. x 0.48 in. (17.2 mm x 8.6 mm x 12.2 mm)
Operating Voltage	24V	Channel with Mounting (W x H)	0.7 in. x 0.36 in. (18.2 mm x 9.2 mm)

RAPID S1 CHANNEL

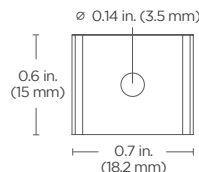


MOUNTING CLIP

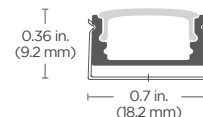
Side View



Top View



CHANNEL WITH MOUNTING CLIP



ORDERING GUIDE

CATEGORY	LENS	Included Accessories:
CHS1		Mounting Clip x 3 End Cap x 2 End Cap with Hole x 2
CHS1 - Rapid S1 Channel	F - Frosted M - Milky	

Note: Comes in uncut 6 ft. 6 in. (2 m) lengths

AVAILABLE COLOR TEMPERATURES

