

Rapid Channel by Acolyte

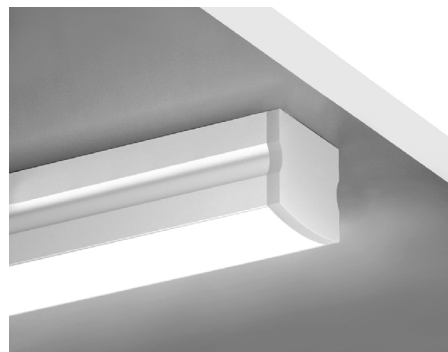


WORK WITH THE SPEED OF LIGHT

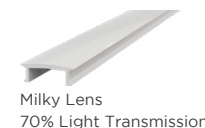
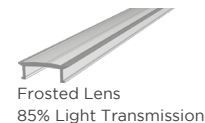
RAPID S2 CHANNEL FIXTURE

Our Rapid S2 Channel Fixture is a slim surface mounted channel with a narrow 66-degree beam angle for a focused spread of light. This channel is great for more compact applications such as tight coves. The Rapid S2 offers a choice of frosted or milky lens. Design a stunning custom fixture with Rapid S2 Channel Fixture and any of our Rapid Ribbon 95+ by Acolyte products. It ships in 48 hours or less!

- Comes in 6 ft. 6 in. (2 m) lengths
- 66° beam angle
- Frosted or Milky lens
- Slim surface mounted design



LENS FINISHES



Applications:

Commercial Hospitality Residential Healthcare
Entertainment Museums Retail Public Spaces



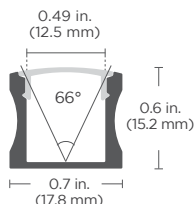
RoHS



SPECIFICATIONS

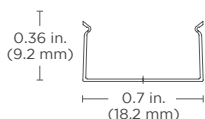
Beam Angle	66°	DIMENSIONS	
Lens Type	Frosted, Milky	Channel (W x H x Internal Width)	0.7 in. x 0.6 in. x 0.49 in. (17.78 mm x 15.2 mm x 12.45 mm)
Operating Voltage	24V	Channel with Mounting (W x H)	0.7 in. x 0.65 in. (18.2 mm x 16.5 mm)

RAPID S2 CHANNEL

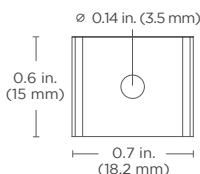


MOUNTING CLIP

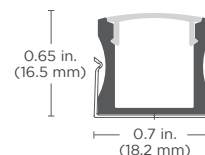
Side View



Top View



CHANNEL WITH MOUNTING CLIP



ORDERING GUIDE

CATEGORY	LENS	Included Accessories:
CHS2		Mounting Clip x 3
CHS2 - Rapid S2 Channel	F - Frosted	End Cap x 2
	M - Milky	End Cap with Hole x 2

Note: Comes in uncut 6 ft. 6 in. (2 m) lengths

AVAILABLE COLOR TEMPERATURES

