

# PRO PREMIUM RETROFIT KIT

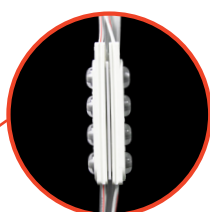
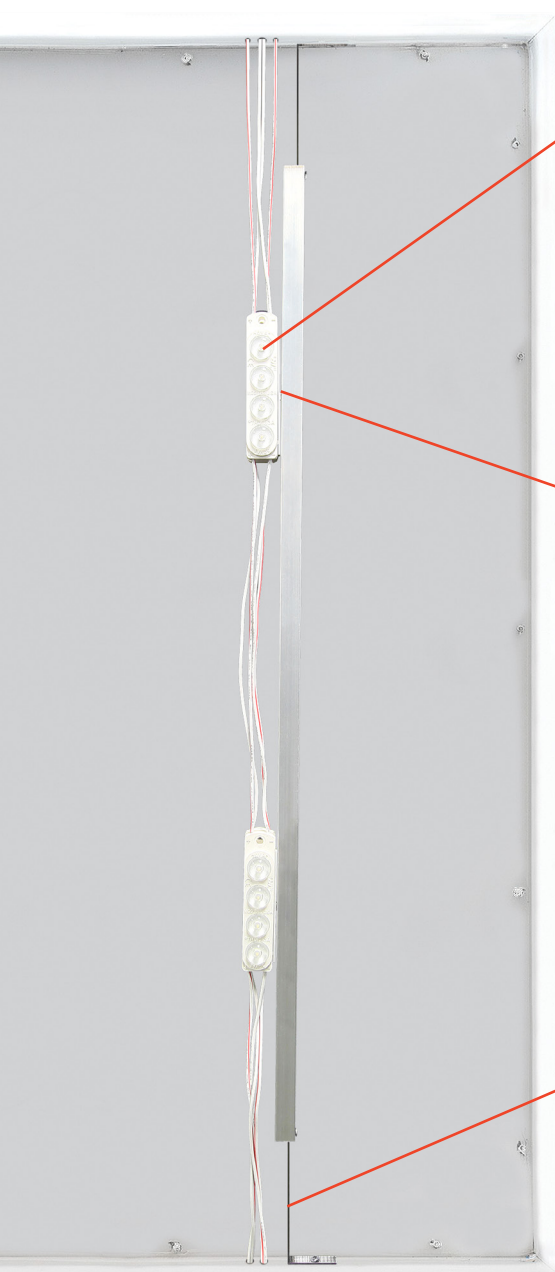
24V SIGNAGE LIGHTING SOLUTIONS



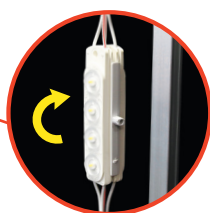
**GEN LED**

**AGILIGHT**<sup>®</sup>  
Innovative Signage Lighting

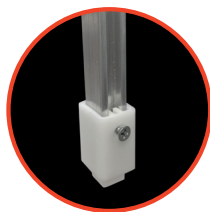
UL ENE RoHS LM-79 LM-80 IP68



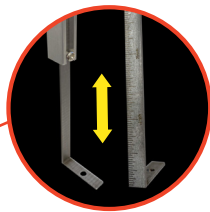
**DOUBLE-SIDED PRO PREMIUM XO MODULES**  
FOR OPTIMUM SIGNAGE LIGHTING



**TURN LOCK PIN FOR QUICK ASSEMBLY**



**HO END CAP FOR STANDARD RETROFITS**



**ADJUSTABLE MOUNTING BRACKET WITH MEASUREMENTS FOR NEW INSTALLATIONS**

## PRO PREMIUM RETROFIT KIT

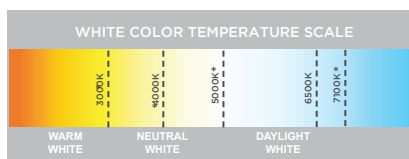
The revolutionary PRO Premium Retrofit Kit lets you quickly and easily “Build a Bar” in the field. Attach 24V PRO Premium 4 XO modules to our special I-Beam design and cut your light bars to fit on the fly! Up to 8 ft. per bar! Simple clips let you lock each double-sided module in place. PRO Premium XO modules feature integrated circuits that maintain constant current, so there is no lumen drop across any string of modules. Spaced at 14.76 inches (375 mm), these super high output 6500K modules are rated IP68 for use in damp and wet locations. Special order other CCTs. Modules feature a 9-year warranty.

## FEATURES

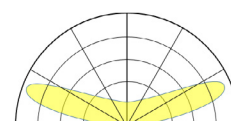
- “Build a Bar” with double-sided PRO Premium XO 24V LED modules
- Easy installation with Adjustable Mounting Brackets
- HO End Caps available for retrofit
- 24V 30W, 60W, 100W or 300W Power Supply
- The “8-ft bar” is actually 93.1 in. (2364.7 mm) so that with two HO End Caps a full bar is 93.8 in., which fits the F96T12 standard size. Use Adjustable Mounting Brackets to reach full length of 8 ft.

Luminous Efficacy	142.8 lm/W @ 6500K
Module Spacing (mm)	375
Wattage per Module	4.2 W Nominal
Input Current	0.174 A/ module
Lumens Per Module	600
Lumens Per Foot / per Meter	480 / 1602

## LUMINOUS INTENSITY DISTRIBUTION



BEAM PATTERN



\* Special orders only

REV.20JUN2024