

PERCEPTION PLUS PENDANT FIXTURE

Perception Plus pendants from Acolyte offer customizable pendants available in five nominal lengths* from 2 ft (613 mm) to 8 ft. (2413 mm). Choose direct or direct/indirect lighting and mix and match different optic lenses to create the perfect beam of light for your application! The Perception Pendant Series also allows us to create complementary sconces. Available in six CCTs ranging from 2700K to 6500K.

- Pendant or wall-mounted fixtures
- 5 Nominal Length options*: from 2 ft. (613 mm) to 8 ft. (2413 mm)
- Direct/Indirect lighting
- 6 CCTs: 2700K, 3000K, 3500K, 4000K, 5000K, 6500K
- Lumen output up to 560 lm/ft (1840 lm/m)
- Use with remote drivers (sold separately)
- Available in silver, black, and white finishes

HOUSING FINISHES



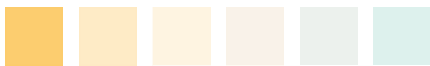
Silver
Default finish

Black

White

Note: Custom colors available upon request

COLOR TEMPERATURES



2700K

3000K

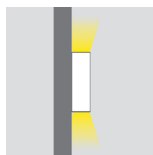
3500K

4000K

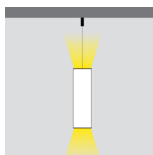
5000K

6500K

MOUNTING OPTIONS

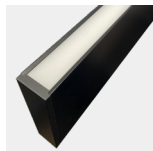


Wall Mount



Suspended Mount

OPTIC OPTIONS



Milky Lens



60° Louver



100°



60°

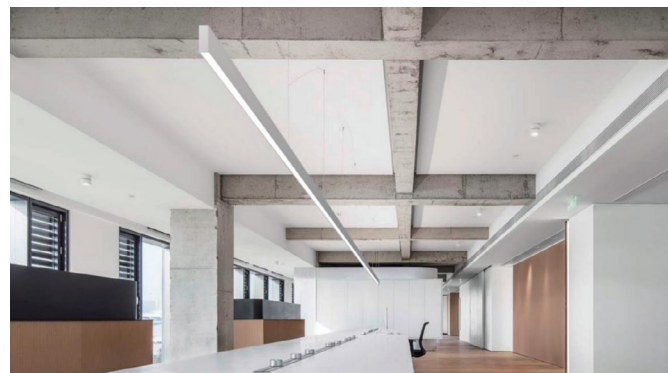
ORDERING GUIDE

Model		Mounting Type		Length*		Color Temperature Direct		Color Temperature Indirect	
PPN									
PPN - Perception Plus	P - Suspended Pendant	2 - 2 ft (613 mm)	6 - 6 ft (1813 mm)**	27 - 2700K	40 - 4000K	27 - 2700K	40 - 4000K		
	W - Wall Mount	4 - 4 ft (1213 mm)	8 - 8 ft (2413 mm)	30 - 3000K	50 - 5000K	30 - 3000K	50 - 5000K		
		5 - 5 ft (1513 mm)		35 - 3500K***	65 - 6500K	35 - 3500K***	65 - 6500K		
Optics Direct		Optics Indirect		Surface Finish					
						* See exact fixture lengths on page 3			
						** Not available with 60° Louver			
						*** May have longer lead time and MOQ			
M - Milky	60 - 60° Louver	M - Milky	60 - 60° Louver	SV - Silver	WH - White				
				BK - Black	C - Custom RAL				

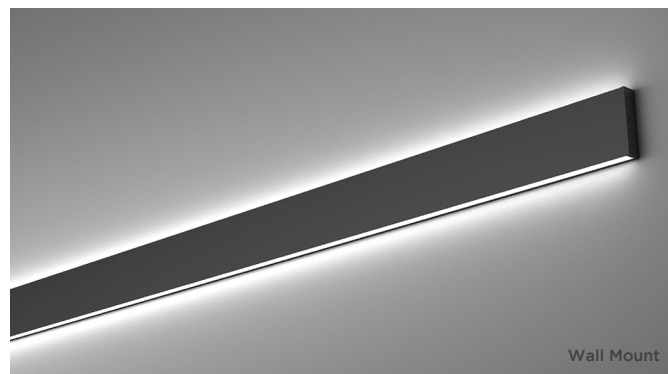
* See exact fixture lengths on page 3

** Not available with 60° Louver

*** May have longer lead time and MOQ



Suspended Mount



Wall Mount



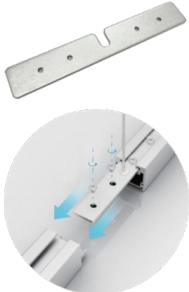

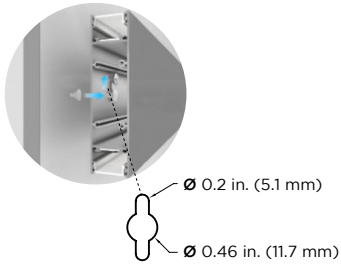
RoHS IP20

SPECIFICATIONS

Beam Angle	110° with Milky Lens Direct Lighting, 100° with Milky Lens Indirect Lighting, 60° with 60° Louver Direct/Indirect Lighting
Lens Types	Milky Lens (PMMA), 60° Louver
Nominal Length (see exact lengths on page 3)	2 ft. (613 mm), 4 ft. (1213 mm), 5 ft. (1513 mm), 6 ft. (1813 mm)*, 8 ft. (2413 mm)
Operating Voltage	24V DC (remote driver with 100-277 VAC Input)
Dimming	0-10V, DALI
Available Colors	2700K, 3000K, 3500K, 4000K, 5000K, 6500K
Efficacy	92 lm/W with milky lens
Light Output	560 lm/ft (1840 lm/m)
CRI	80+ Standard, 90+ Optional
Certifications	UL, CE, RoHS

* Not available with 60° Louver

ACCESSORIES

180° Coupler (Part #: PN180CONNPS)	Suspended Mounting Kit (included accessory)	Canopy Kit (included accessory)	Keyhole Slot for Wall Mount No accessory needed. See installation guide for details
		<p>Canopy color matches fixture finish</p> 	<p>Keyholes every 21.65 in. (550 mm)</p> 

DIMENSIONS

Suspended Mount 	Wall Mount 
--	---

Acolyte does not warrant or represent that the information is free from errors or omission. The information may change without notice and Acolyte is not in any way liable for the accuracy of any information printed and stored or in any way interpreted or used.

EXACT FIXTURE LENGTHS

Nominal Length	Exact Fixture Length with Milky Lens				Exact Fixture Length with 60° Louver			
	mm	in.	ft	Wattage	mm	in.	ft	Wattage
2	609	23.9	1.99	24 W	543	21.3	1.78	21.6 W
4	1209	47.5	3.96	48 W	1083	42.6	3.55	43.2 W
5	1509	59.3	4.94	60 W	1515	59.5	4.96	60.6 W
6	1809	71.1	5.92	72 W	N/A	N/A	N/A	N/A
8	2409	94.7	7.89	96 W	2161	84.9	7.08	86.4 W

LUMEN

Optic	Light Output (lm/ft)	Light Output (lm/m)	Efficacy (lm/W)	Beam Angle
Milky Lens Direct Lighting	560	1836	92	110
Square Milky Lens Indirect Lighting	489	1603	81	100
60° Louver Direct Lighting	483	1583	79	60
60° Louver Indirect Lighting	356	1167	58	60