



Date _____ Project _____

Notes _____

PERCEPTION PENDANT FIXTURE

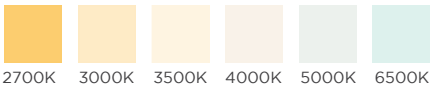
The Perception Pendant Series from Acolyte offers customizable pendants in five nominal lengths* ranging from 2 ft (609 mm) to 8 ft (2409 mm). These direct lighting pendants offer a choice of optic lenses to create the perfect beam of light for your application! Pick from 60° louvers, Asymmetric lenses or milky diffuser lenses. The flexible Perception Pendant Series also allows us to build complementary recessed, mud-in and ceiling mounted fixtures. All available in six CCTs ranging from 2700K to 6500K.

- Direct lighting pendants (105 lm/W)
- Complementary recessed and ceiling mounted fixtures (105-125 lm/W)
- Milky Lens, 60° Louver, or Asymmetric Lens
- 6 CCTs: 2700K, 3000K, 3500K, 4000K, 5000K, 6500K
- 25 mm (1 in.) wide
- 180° coupler available for continuous straight runs
- 24V fixtures with remote drivers (sold separately) and sleek aircraft cable power supply for pendants

HOUSING FINISHES

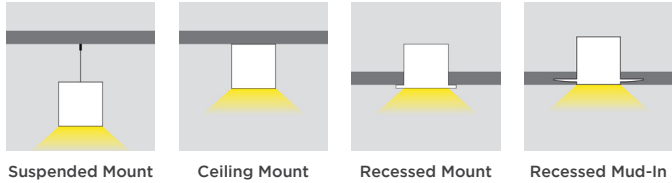


COLOR TEMPERATURES



Note: Custom colors available upon request

MOUNTING OPTIONS



OPTIC OPTIONS

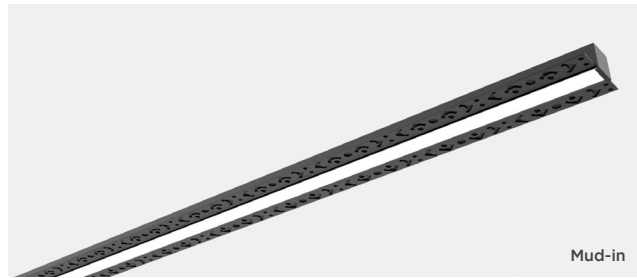
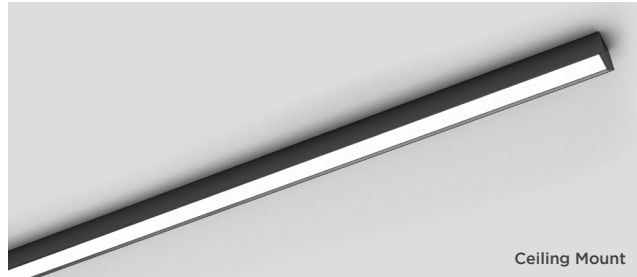


ORDERING GUIDE

Model	Mounting Type	Length*	Color Temperature	Optics	Surface Finish
PN					
PN - Perception	P - Suspended Pendant	2 - 2 ft (613 mm)	27 - 2700K	M - Milky Lens	SV - Silver
	S - Ceiling	4 - 4 ft (1213 mm)	30 - 3000K	60 - 60° Louver	BK - Black
	R - Recessed	5 - 5 ft (1513 mm)	35 - 3500K***	AS - Asymmetric Lens	WH - White
	M - Mud-in	6 - 6 ft (1813 mm)**	40 - 4000K		C - Custom RAL
		8 - 8 ft (2413 mm)	50 - 5000K		
			65 - 6500K		

* See exact fixture lengths on page 3
 ** Not available with 60° Louver
 *** May have longer lead time and MOQ

NOTE: 180° Coupler and Canopy Kit must be ordered separately. See page 2 for more details.

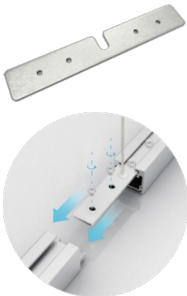






SPECIFICATIONS

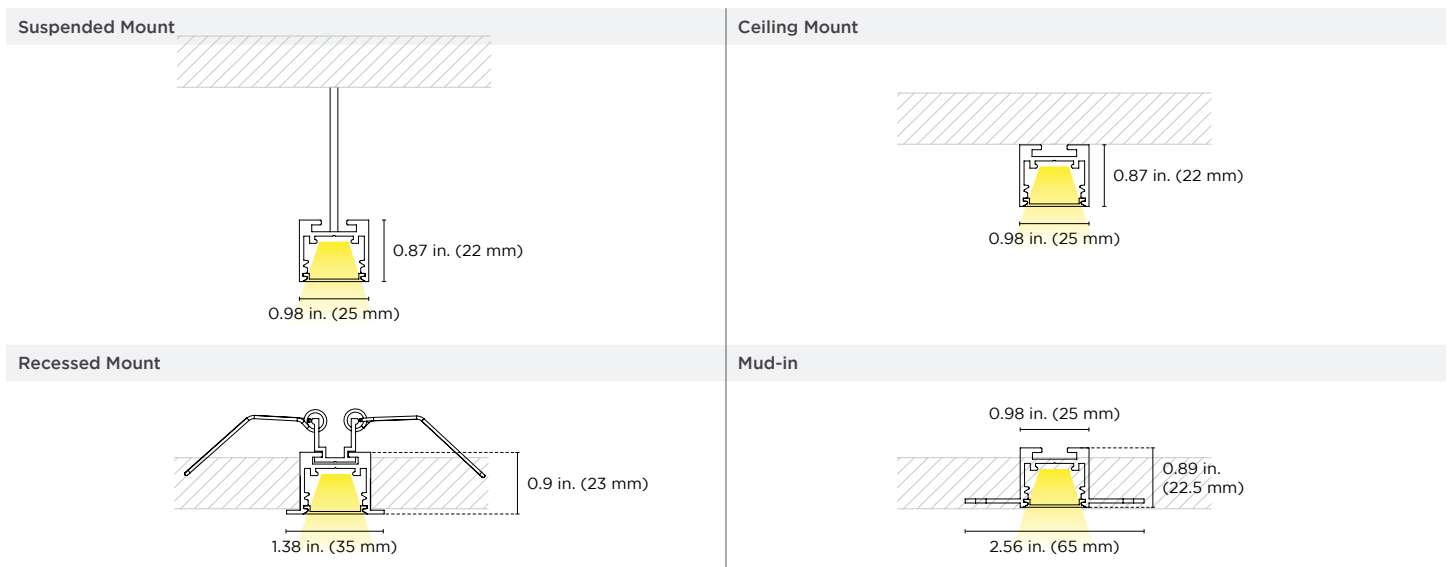
Beam Angle	103° with Milky Lens, 140° with Square Milky Lens, 60° with 60° Louver, Asymmetric with Asymmetric Lens
Lens Types	Milky Lens (PMMA), 60° Louver, Asymmetric Lens
Nominal Length (see exact lengths on page 3)	2 ft. (613 mm), 4 ft. (1213 mm), 5 ft. (1513 mm), 6 ft. (1813 mm)*, 8 ft. (2413 mm)
Operating Voltage	24V DC (remote driver with 100-277 VAC input)
Dimming	0-10V, DALI
Available Colors	2700K, 3000K, 3500K, 4000K, 5000K, 6500K
Efficacy	104 lm/W with Milky Lens (see lumen table on page 3 for more details)
Light Output	625 lm/ft (2050 lm/m) with Milky Lens (see lumen table on page 3 for more details)
CRI	80+ Standard, 90+ Optional
Certifications	UL, CE, RoHS

* Not available with 60° Louver

ACCESSORIES

180° Coupler Part #: PN180CONNPS 	Ceiling Mounting Clip (included accessory) 	Spring Clip for Recessed Mount (included accessory) 	Suspended Mounting Kit (included accessory) 	Canopy Kit Silver Canopy Kit Part #: PNCANOPYKITSV Black Canopy Kit Part #: PNCANOPYKITBK White Canopy Kit Part #: PNCANOPYKITWH  Each fixture requires two Canopy Kits.
--	--	---	--	---

DIMENSIONS



Acolyte does not warrant or represent that the information is free from errors or omission. The information may change without notice and Acolyte is not in any way liable for the accuracy of any information printed and stored or in any way interpreted or used.

EXACT FIXTURE LENGTHS

Nominal Length	Exact Fixture Length with Milky Lens or Asymmetric Lens				Exact Fixture Length with 60° Louver			
	mm	in.	ft	Wattage	mm	in.	ft.	Wattage
2	609	23.9	1.99	12 W	543	21.3	1.78	10.8 W
4	1209	47.5	3.96	24 W	1083	42.6	3.55	21.6 W
5	1509	59.3	4.94	30 W	1515	59.5	4.96	30.3 W
6	1809	71.1	5.92	36 W	N/A	N/A	N/A	N/A
8	2409	94.7	7.89	48 W	2161	84.9	7.08	43.2 W

LUMEN

Optic	Light Output (lm/ft)	Light Output (lm/m)	Efficacy (lm/W)	Beam Angle
Milky Lens	625	2051	104	103
60° Louver	356	1168	58	60
Asymmetric Lens	650	2133	109	Asymmetric

SUGGESTED SUSPENSION WIRE SEPARATED DISTANCES

