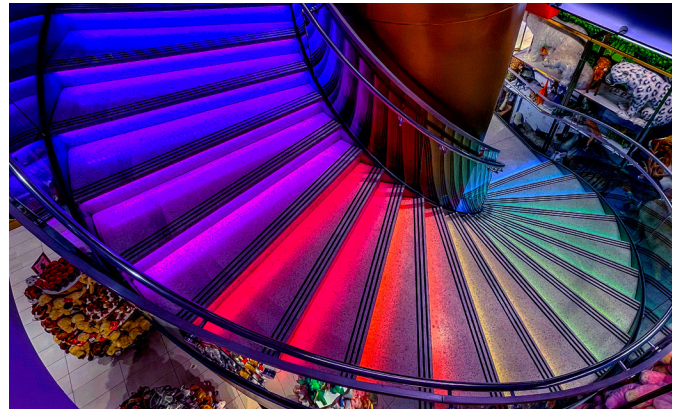


4 ZONE COLOR CHANGING GLASS TOUCH WALL CONTROLLER

The 4 Zone Color Changing Glass Touch Wall Controller manages 4 or 5 channels for RGBW, RGBA and RGBWW lighting from an elegant touch-sensitive display. It runs 4 zones with DMX512 output protocols (wireless Bluetooth 5.0 optional). Program and save unique transitions, rolls and fades with ease with 4 scene keys, 4 zone keys, a touch color circle and a touch slider.



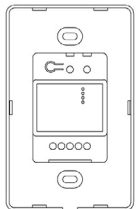
- Simple control for RGBW, RGBA and RGBWW
- 4 zones / 4 scenes
- 12-24 V DC input
- 1 universe / 512 DMX channels
- DMX512 output protocol (Bluetooth 5.0 optional)
- Touch color circle and slider bar
- Easily adjust speed and brightness

Applications:

Commercial	Hospitality	Residential
Entertainment	Museums	Retail
Healthcare	Public Spaces	



DIMENSIONS



Width: 2.95 in (75 mm)
Length: 4.72 in (120 mm)
Depth: 1.16 in (29.5 mm)

ORDERING GUIDE

STANDARD

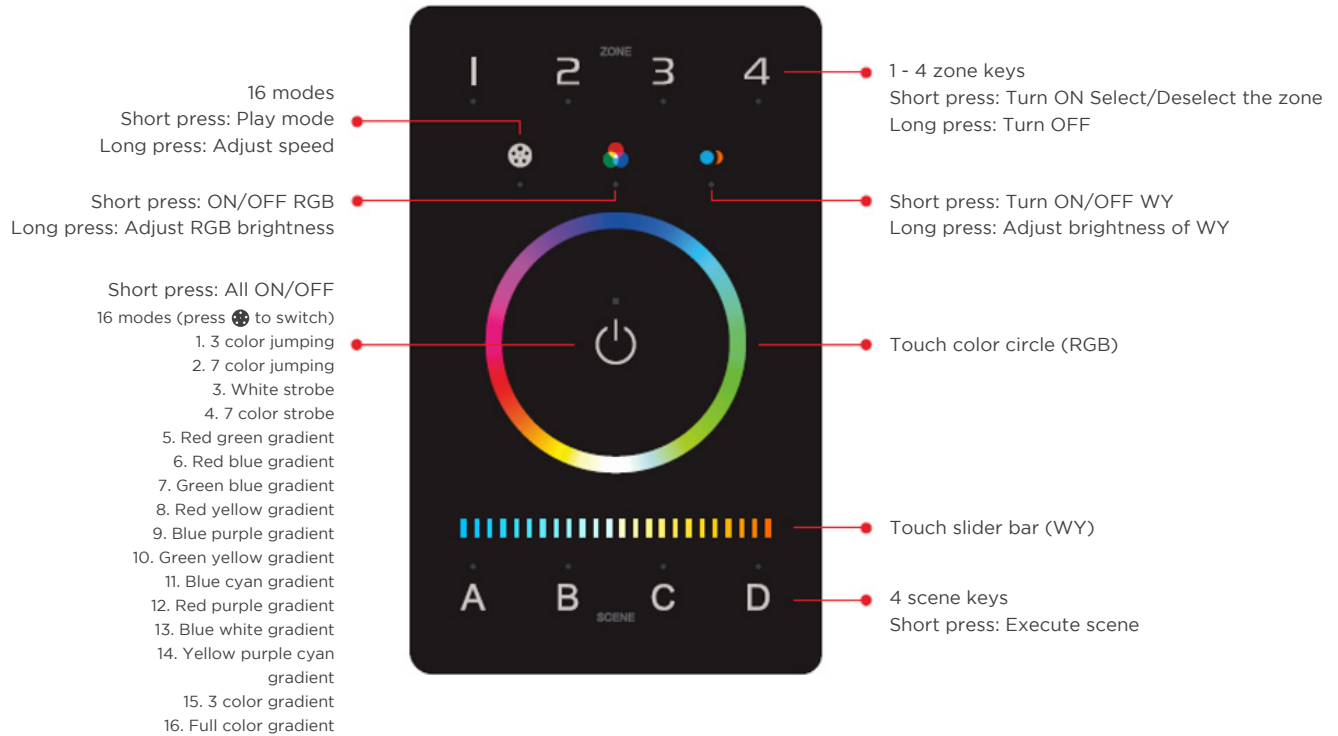
Category

AWCRGBWWBK

AWCRGBWWBK - 4 Zone Color Changing Glass Touch Wall Controller

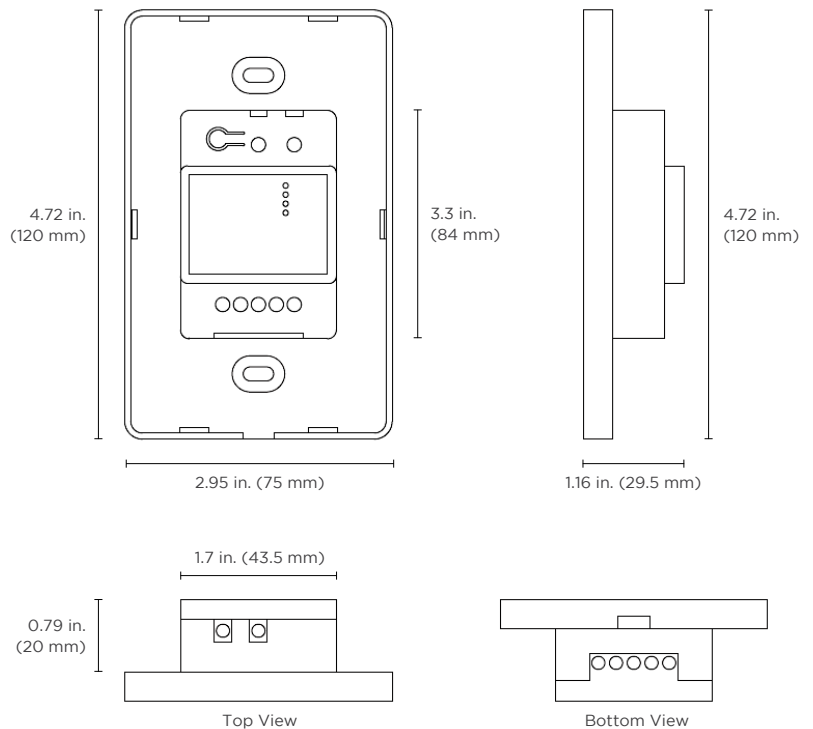
Acolyte does not warrant or represent that the information is free from errors or omission. The information may change without notice and Acolyte is not in any way liable for the accuracy of any information printed and stored or in any way interpreted or used.

FEATURES



SPECIFICATIONS / DIMENSION DRAWING

TECHNICAL DATA	
Input Power	12-24V DC
Output Protocol	DMX512
Wireless Protocol	Bluetooth 5.0 SIG Mesh
Available Colors	Black
Zones	4
Temperature	14° - 113° F (-20° - 55° C)
Dimensions	2.95 x 4.72 x 1.16 in. (75 x 120 x 29.5 mm)
Weight	0.5 lb (225 g)
Standards	UL, RoHS, FCC, CE



Acolyte does not warrant or represent that the information is free from errors or omission. The information may change without notice and Acolyte is not in any way liable for the accuracy of any information printed and stored or in any way interpreted or used.

WIRING DIAGRAM

