

100W 2 CHANNEL DIMMABLE DALI DRIVER

The 100W 2 Channel Dimmable DALI Driver is a UL Listed high efficiency two-channel 24V constant voltage driver for use with tunable LEDs like our Variable White products.

- Slender, lightweight polycarbonate housing
- Removable endcap allows length adjustment
- Soft on and fade-in dimming functions
- Flicker-free dimming from 0-100%, down to 0.1%
- Two-channel SELV output with common anode
- Constant power design maintains brightness while tuning CCT
- Innovative thermal technology protects power life
- Overheating, over voltage, overload, short circuit protections with automatic recovery
- Suitable for indoor use
- 5-year warranty



Applications:

Commercial	Hospitality	Residential
Entertainment	Museums	Retail
Healthcare	Public Spaces	



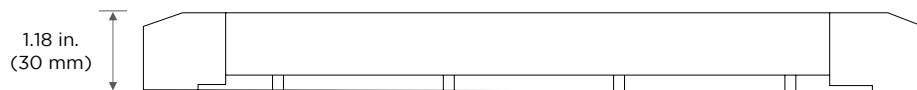
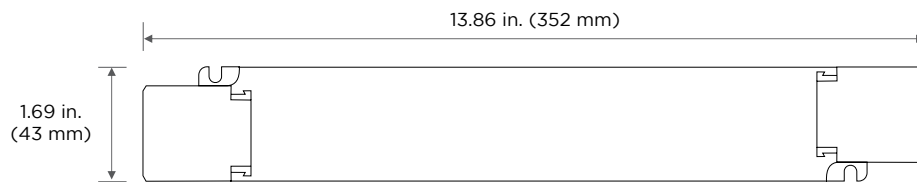
ORDERING GUIDE

Category	Voltage	Wattage	Dimming Option	Number of Channels
DRV	24	100	DALI	2CH
DRV - Driver	24 - 24 V	100 - 100W	DALI - Dali Dimmable	2CH - 2 channels

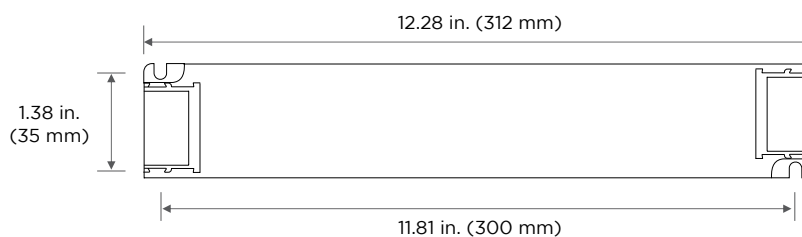
NOTE: Use only in an enclosure. When ordering, please specify constant current LED fixture use (wall washer, RibbonLyte, etc.).

DIMENSIONS

Length: 13.86 in. (352 mm)
Width: 1.69 in. (43 mm)
Height: 1.18 in. (30 mm)



WITHOUT ENDCAPS



SPECIFICATIONS

100W 2 CHANNEL DIMMABLE DALI DRIVER



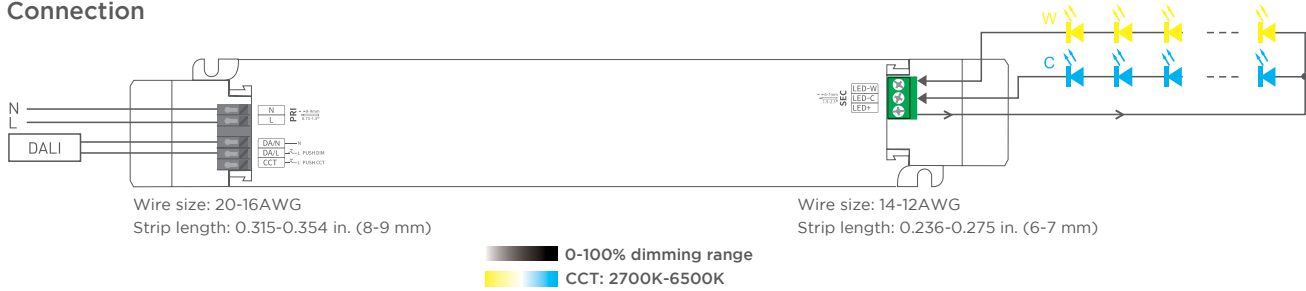
Output Voltage (DC)	24V DC
Output Wattage	100 W
Number of Channels	2
Input Voltage	120-277V AC
Max Power	100 W
Rated Voltage	24V DC
Output Voltage Range	24Vdc ± 0.5Vdc
Ripple & Noise	Switch ripple ≤ 150mV, noise ≤ 500mV
Power Factor	PF > 0.99/120V AC, PF > 0.95/230V AC, PF > 0.9/277V AC (at full load)
Input Current	Max. 1A/120V AC, 0.55A/230V AC, 0.45A/277V AC
Output Current	Max. 4.17A
Input Frequency	50/60 Hz
PWM Frequency (Output)	3600 Hz
Efficiency (typical)	93%
Safety Standards	US: UL, UL8750 EU: CE, EN61347-1, EN61347-2-13, EN62384
IP Rating	IP20
Dimming Range	0-100%, down to 0.1%
Dimming Interface	DALI-2 DT6/DT8, Push DIM/CCT
Dimensions (L x W x H)	13.86 x 1.69 x 1.18 in. (352 x 43 x 30 mm)
Weight (gross weight)	0.95 lb (430 g)
Lifetime	Up to 50,000 hours
Warranty	5 years

MAX LENGTH BETWEEN DRIVER & RIBBONLYTE AT FULL LOAD

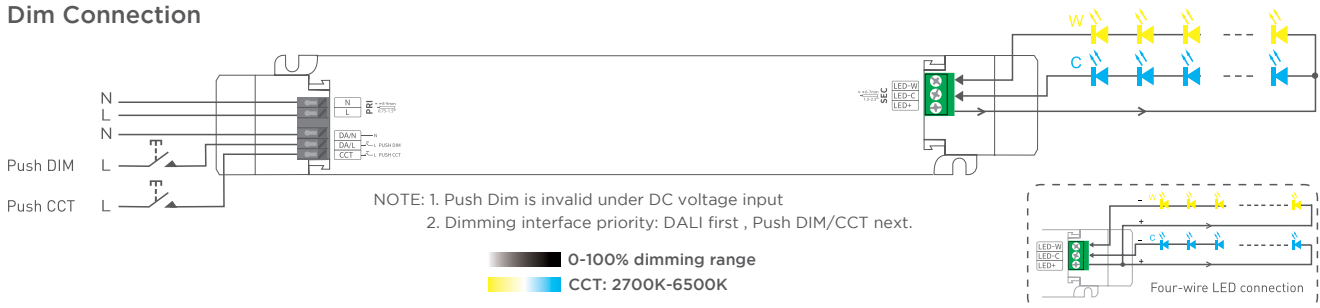
Wire Gauge	Feet	Meters
24 AWG	11	3.3528
22 AWG	17	5.1816
20 AWG	28	8.5344
18 AWG	45	13.716
16 AWG	71	21.6408
14 AWG	113	34.4424
12 AWG	181	55.1688
10 AWG	288	87.7824
8 AWG	457	139.2936

WIRING DIAGRAMS

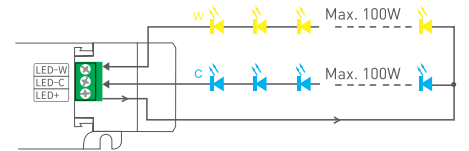
DALI Connection



Push Dim Connection

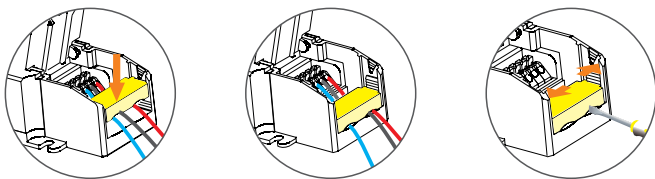


Adopt constant power program design and it keeps the same brightness in color temperature adjustment. Twice the rated power load can be connected to the driver. A 100W driver can connect to 100W X 2CH load and the total power of the 2 channels will be kept within 100W.



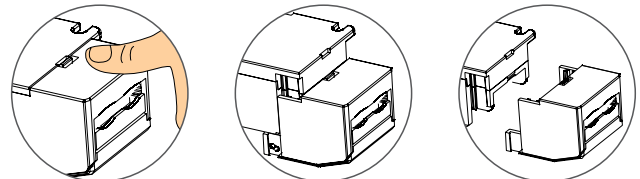
INSTALLATION

Tension Plate



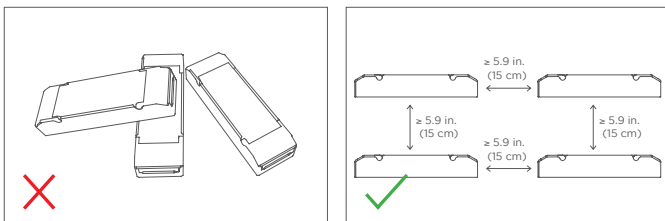
Push the tension plate down to fix the electric wires. Push the side plate outwards and remove the tension plate by prying it up with a tool at the same time.

Remove the Protective Housing

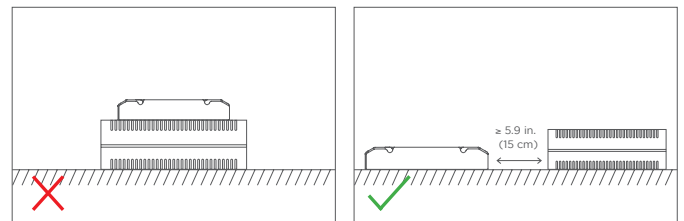


Pull the housing left and right from the bottom to remove it.

Precautions



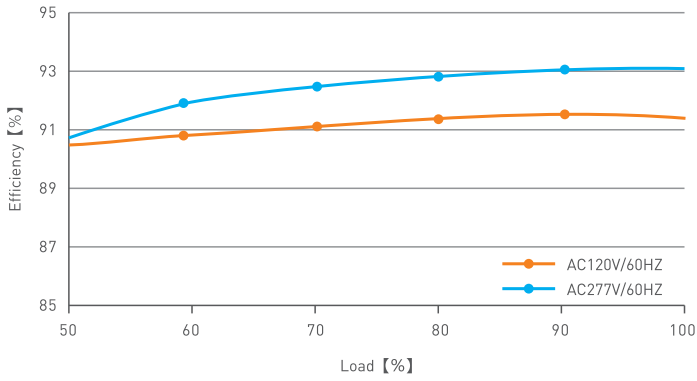
Please do not stack the products. The distance between two products should be ≥ 5.9 in. (15 cm) so as not to affect heat dissipation and the lifespan of the products.



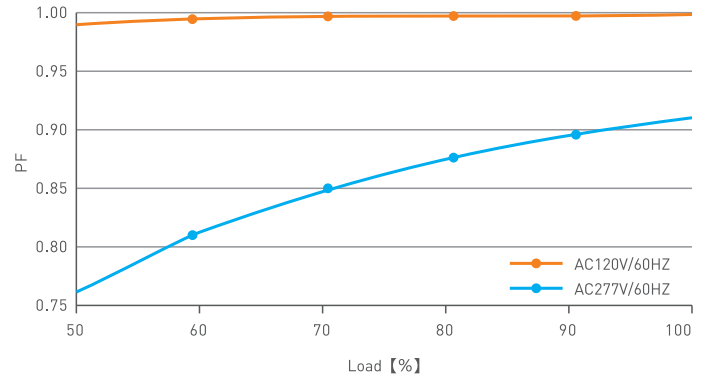
Please do not place the products on LED drivers. The distance between the product and the driver should be ≥ 5.9 in. (15 cm) so as not to affect heat dissipation and shorten the lifespan of the products.

PERFORMANCE

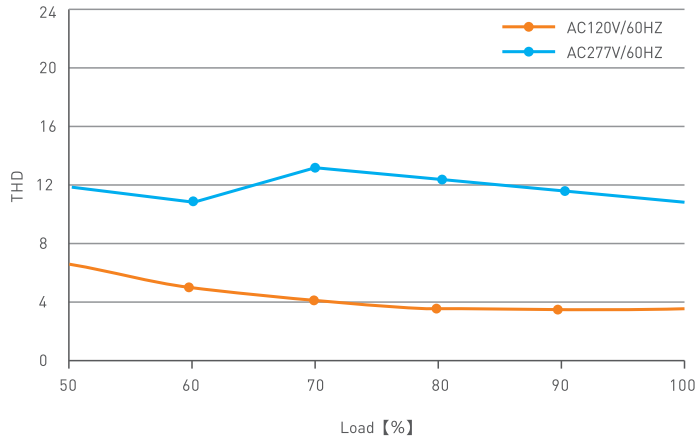
Efficiency vs Load



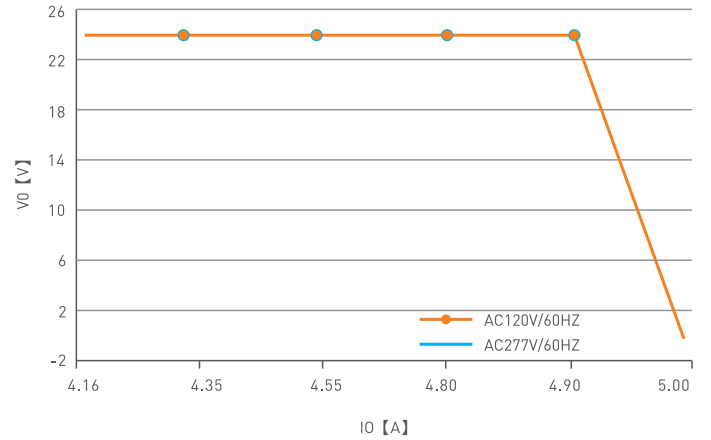
Power Factor Characteristic



THD VS Load



Over Load Diagram



Acolyte does not warrant or represent that the information is free from errors or omission. The information may change without notice and Acolyte is not in any way liable for the accuracy of any information printed and stored or in any way interpreted or used.