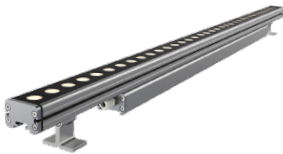




ARMOR SERIES WALL GRAZERS & WASHERS

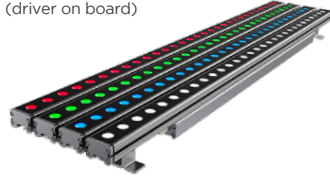
AC MINI
(driver on board)



Available Wattages / Lengths:
9W / 12.32 in. (313 mm)
12W / 16.1 in. (410 mm)
18W / 23.8 in. (605 mm)
27W / 35.43 in. (900 mm)
36W / 46.9 in. (1190 mm)

Beam Angles:
10°x 10°, 20°x 20°, 25°x 25°, 50°x 50°, 10°x60°

RGBW AC MINI
(driver on board)



Available Wattages / Lengths:
20W / 16.1 in. (410 mm)
30W / 23.8 in. (605 mm)
45W / 35.4 in. (900 mm)
60W / 47.2 in. (1190 mm)

Beam Angles: 15°x 15°, 25°x 25°, 35°x 35°, 50°x 50°

FORTE LINEAR



Available Wattages / Lengths:
33 W / 13 in. (330 mm)
52 W / 23.6 in. (600 mm)
84 W / 37.2 in. (945 mm)

Available Beam Angles:
15°x 15°, 25°x 25°, 45°x45°, 70°x70°, 15°x45°

FORTE LINEAR RGBW



Available Wattages / Lengths:
30W / 13 in. (330 mm)
60W / 23.6 in. (600 mm)
98W / 37.2 in. (945 mm)

Available Beam Angles:
20°x 20°, 25°x 25°, 30°x30°, 40°x40°, 65°x65°, 20°x45°

MINI



Available Wattages / Lengths:

U.S. Version:
6W / 8.5 in. (215 mm)
12W / 16.1 in. (410 mm)
18W / 23.8 in. (605 mm)
36W / 46.9 in. (1190 mm)

International Version:
5W / 7.3 in. (185 mm)
15W / 19.7 in. (500 mm)
30W / 39.4 in. (1000 mm)

Available Beam Angles:
15°x 15°, 20°x 20°, 35°x 35°, 50°x 50°, 10x40°

RGBW MINI



Available Wattages / Lengths:

14W / 12.3 in. (313 mm)
24W / 19.7 in. (500 mm)
30W / 23.8 in. (605 mm)
48W / 39.4 in. (1000 mm)
60W / 47.2 in. (1190 mm)

Available Beam Angles:
15°x 15°, 25°x 25°, 35°x 35°

NANO

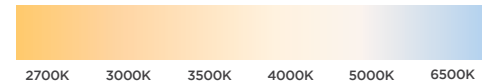


Available Wattages / Lengths:

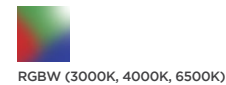
3W / 7.2 in. (182 mm)
9W / 19.7 in. (500 mm)
18W / 39.4 in. (1000 mm)

Available Beam Angles:
30°x 30°, 55°x 55°, 25x35°

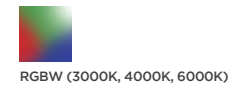
AC MINI/MINI/NANO/FORTE



RGBW MINI & RGBW AC MINI



FORTE LINEAR RGBW



CERTIFICATIONS:

NANO, MINI, RGBW MINI: **AC MINI, RGBW AC MINI:**

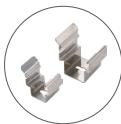


FORTE

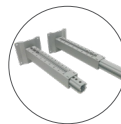


MOUNTING ACCESSORIES

Note: Louvers and Glare Shield are available. See specification sheets for more details.



SNAP-IN CLIP*
For narrow installations where mounting clips need to be installed first



MOUNTING ARMS
Adjustable length between wall and fixture

Small Mounting Arm:
6-9 in. (152-229 mm)

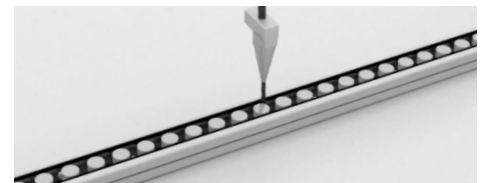
Large Mounting Arm:
14-22 in. (356-559 mm)



TILTABLE STAND*
For adjustable mounting angles up to 140°



LARGE TILTABLE STAND**
For adjustable mounting angles up to 180°



All Armor Series Fixtures are Protected with our Proprietary Gel-Flush™ Technology:

A special Dow Corning gel is injected throughout each fixture before we install the lens covers and end caps. The fixture is then set aside for a 24-hour curing period to seal the entire unit against the elements.