

230V STATIC WHITE DIRECT AC RIBBONLYTE

Static White Direct AC RibbonLyte extends up to 50 m on a single run using Direct AC power. That means no drivers needed! Direct AC RibbonLyte is perfect for long coves and other large spaces. It is factory cuttable every 166 mm.

- Directly input 220-240 VAC
- Max run length: 50 m
- 2400K, 2700K, 3000K, 3500K, 4000K, 5000K, 6000K
- Factory cuttable every 166 mm
- 90+ CRI
- Sold with AC plug or bare wire input
- Mounting clips included (6 mounting clips per meter)
- Mounting channel or aluminum channel with lens available



Applications:

Commercial	Hospitality	Residential
Entertainment	Museums	Retail
Healthcare	Public Spaces	

CE **RoHS** **IP65**

ORDERING GUIDE

Category	CRI	Ribbon Type & IP Rating	Wattage + Color	
RB	90	AC23065		
RB - RibbonLyte	90 - 90+ CRI Static White	AC23065 - Direct AC 230V IP65	4.024 - 4.0 2400K	4.040 - 4.0 4000K
			4.027 - 4.0 2700K	4.050 - 4.0 5000K
			4.030 - 4.0 3000K	4.060 - 4.0 6000K
			4.035 - 4.0 3500K	

Connection Options:

- 2 meter cable to bare wire
- 2 meter cable to AC plug
- 8 meter cable to bare wire
- 6 cm jumper cable
- 30 cm jumper cable
- 4 meter jumper cable

Included Accessories:

Mounting Clip
Part No.: RBHIACMNT (2 clips per linear foot)

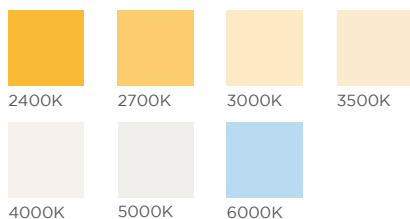
Optional Accessories:

Mounting Channel
Part No.: CHDACPSWSC (see page 2 for details)

Aluminum Channel with Flat Milky Lens
Part No.: CHDACSVSM (see page 2 for details)

Waterproof Cable Connector
Part No.: COUPW683WH (see page 4 for instruction)


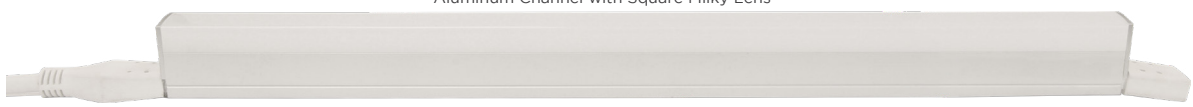
AVAILABLE COLOR TEMPERATURES



SPECIFICATIONS / DIMENSIONS / DIAGRAMS

Input Voltage	220-240 VAC
Power Consumption	14 W/m
Protection Rating	IP65
Ambient Temperature	-20° C - 45° C
Color Temperature	2400K, 2700K, 3000K, 3500K, 4000K, 5000K, 6000K
Total Lumens	1000-1300 lm/m
LEDs/m	72/m
LED Beam Angle	120°
CRI	90+ CRI
Lumens per Watt	83 - 100 lm/w
Maximum Run Length	50 m
Cuttable Length	Every 166 mm Please account for the 20±5 mm RibbonLyte inside of the power feed cap and end cap when calculating the total run length. (Each run contains a total of 40±10 mm in the end caps) See next page for details.
Cable Lengths	2 meter cable to bare wire; 2 meter cable to AC plug; 8 meter cable to bare wire; 6 cm jumper cable; 30 cm jumper cable; 4 meter jumper cable
Certifications	CE
Max Operating Temperature	45° C
Lamp Life	L70 > 36,000 hours at 55° C

	DIRECT AC RIBBONLYTE	MOUNTING CLIP Part #: RBHIACMNT (includes 6 clips per meter)
		
Width	15.5 mm (end cap and cable grip width: 20 mm)	20.32 mm
Length	50 m max run length. Factory cuttable every 166 mm.	10.92 mm
Height	6.0 mm	12.19 mm

Dimensions	ALUMINUM CHANNEL WITH FLAT MILKY LENS Part #: CHDACSVSM	ALUMINUM CHANNEL WITH SQUARE LENS Part #: CHDACSVSM
	<p>Aluminum Channel with Flat Milky Lens</p>  <p>Aluminum Channel with Square Milky Lens</p>  <p>Please account for the exposed end caps in both ends of the channel. (See dimensions on next page)</p>	
Width	20.1 mm	20.1 mm
Length	Max length 2.44 m	Max length 2.44 m
Height	18.5 mm	31.2 mm

Acolyte does not warrant or represent that the information is free from errors or omission. The information may change without notice and Acolyte is not in any way liable for the accuracy of any information printed and stored or in any way interpreted or used.

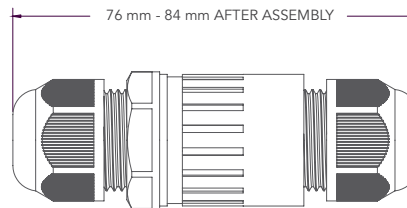
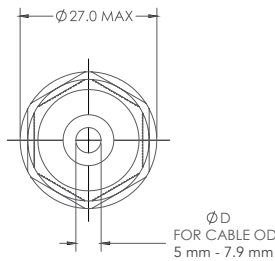
SPECIFICATIONS

Power Feed Cap & End Cap Dimensions	<p>Top View</p> <p>Side View</p>	<p>Width of End Cap: 19 mm Length of End Cap: 27 mm Height of End Cap: 10 mm</p> <p>Height of RibbonLyte: 5.3 mm Width of Power Feed Cap: 19 mm Length of Power Feed Cap: 53 mm Height of Power Feed Cap: 13.3 mm</p>
Power Feed Options	<p>Power Feed Option 1</p> <p>Power Feed Option 2</p> <p>Power Feed Option 3</p>	<p>2 meter cable to bare wire Cable length: 2 m</p> <p>2 meter cable to AC plug Cable length: 2 m</p> <p>8 meter cable to bare wire Cable length: 8 m</p>
Jumper Cable Options	<p>Jumper Cable Option 1</p> <p>Jumper Cable Option 2</p> <p>Jumper Cable Option 3</p>	<p>6 cm jumper cable (for daisy chains) Jumper cable length: 6 cm</p> <p>30 cm jumper cable (for daisy chains) Jumper cable length: 30 cm</p> <p>4 meter jumper cable (for daisy chains) Jumper cable length: 4 m</p>

Static White Direct AC Waterproof Cable Connector

We provide 2m and 8m power feed solutions. If additional length is needed use the cable coupler.
Part No. : COUPW683WH

Dimensions (Part Number: COUPW683WH)

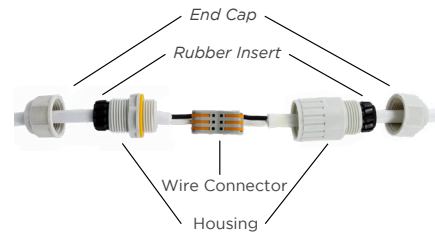


The Connector



Length: 75.96 mm - 84.07 mm After Assembly
Diameter: 26.92 mm MAX

Exploded View of the Connector



Step 1



Assemble cable from one end of the connector as shown above.

Step 2



Assemble cable from another end of the connector as shown above. Make sure the wires go to their corresponding terminals (e.g. wire color matches to each other).

Step 3



Tighten two housings together and insert the rubber parts at the housing ends.

Step 4



Tighten two end caps.

USAGE GUIDELINES:

- IP65 RibbonLyte are not field cuttable. All custom cuts and connections for these models must be performed at the factory to ensure waterproofing standards are met. Any modification of this on the field or by end user will result in a voided warranty.
- When installing this product take into account the surface temperature of the material this product is mounted to. Many building surfaces exceed the 45° C maximum that our product is rated for. High-risk locations like this should be avoided. Avoid direct sunlight.
- This product is not intended to be submerged in pools and fountains and do not carry UL676 certification to do so.
- Please refer to the RibbonLyte Proper Use Guide in our Application Guide for more information (available for download at www.AcolyteLED.com).
- Compatible with a wide variety of control products.
- For use with Acolyte interface controller DMXINF120RGB. Acolyte Direct AC RibbonLyte is compatible with Triac and ELV/MLV dimming.
- Due to the nature of the product, RibbonLyte cuttable lengths are generally longer or shorter than the customer requested length. Unless specified, RibbonLyte is factory cut at the shorter cuttable point.
- We reserve the right to make changes to product lineup, specifications, design and finishes at any time without notice.

REV.11DEC2024

GLOBAL HQ

320 Murray Hill Pkwy
East Rutherford, NJ 07073
U.S.
T: (+1) 212 629 6830
E: Sales-US@GENLEDBrands.com

EUROPEAN HQ

Hogeweyselaan 119
1382 JK Weesp
Netherlands
T: (+31) 346 235 000
E: SalesEurope@GENLEDBrands.com

MEINA HQ

PO Box 371378, #823, Building 4EA
Dubai Airport Free Zone
Dubai, UAE
T: (+971) 4 701 7901
E: SalesMEINA@genledbrands.com

ASIA-PACIFIC HQ

Room 402, Building D
Shenshi Tongchuang Science and Technology Park
No. 16 Hongyin Road
Xingqiang Community, Xinhua Street
Guangming District, Shenzhen, China 518107
Sales: (+86) 139 1836 3905
Office: (+86) 755 8529 0710
E: Sales-Pacific@GENLEDBrands.com