



# PUTTING LIGHT IN MOTION



PIXEL PRODUCTS  
FROM ACOLYTE



# PINPOINT CONTROL WITH PIXELS

Acolyte offers a dynamic suite of pixel controls and related lighting fixtures that provide amazing scale and scope for projects with easy programming down to individual LED pixels.

The controls feature SPI (Serial Peripheral Interface) technology, a synchronized communication protocol used to rapidly transmit information from control systems to "peripherals" -- related products such as LED fixtures. Like DMX systems, the SPI protocol features "universes" made up of 512 channels with specific addresses. SPI controls can communicate at 60 frames per second -- considerably faster than DMX.

This allows simple programming and incredibly precise execution in diverse applications that range from exterior nodes to wall washers and grazers or interior backlighting with color changing presentations in all types of architectural lighting.

Put your light in motion with Acolyte pixel products.



# CONTROLLERS

We offer three pixel-purposed control modules: the C4 Extended, the C4 Live, and the PxLNet Controller, each with built-in triggers for automated applications over long distances. Varied in size (up to 8, 24 or 96 universes) to fit custom applications, these controllers scale well to large jobs. They provide a user-friendly programming experience with full functionality on any device (smart phone, tablet or computer), allowing you to control individual pixels in complex lighting projects. Compatible with DMX, SPI, 0-10V, Art-Net and WiFi, these DiGidot systems offer a simple menu and wireless configuration that supports 63 SPI protocols. Program with 8 bit or 16 bit dimming. Quickly create seamless loops, color scrolls and fade effects or adjust brightness, saturation, speed and hue and easily assign scenes to distinct locations.

These pixel controls can be deployed with several amazing new Acolyte pixel fixtures that span multiple lighting applications.



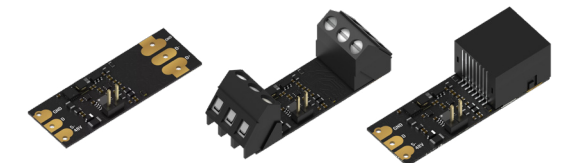
PXLNET CONTROLLER



C4 EXTENDED &  
C4 LIVE



PXLNET TRANSMITTER



PXLNET TRANSCIVERS



# NODES

The TriNode and HexaNode are versatile single-point source RGB or RGBW fixtures that can be used to create unique programmable pixel displays or to highlight architectural details. TriNode modules feature three color changing LEDs (plus an added white LED for RGBW) while HexaNode modules use six each (plus two added white LEDs for RGBW). Both are part of Acolyte's Armor Series of exterior lighting products. Each is available in a clear flat lens (110° beam angle) or a milky globe lens (160° beam angle). Module spacing and quantities can be fully customized, starting at 3.94 in. (100 mm) in run lengths of up to 492 ft (150 m). Single modules can quickly be replaced for easy maintenance.

## TRINODE

- 48V or 24V
- RGB at 19 lm/node (all on)
- RGBW (2700K) at 24 lm/node (all on)
- 5-year warranty



## HEXANODE

- 24V
- RGB at 38 lm/node (all on)
- RGBW (2700K) at 50 lm/node (all on)
- 5-year warranty



Custom Pixel Quantities Per String



Custom Spacing



Milky Globe Lens



Clear Flat Lens



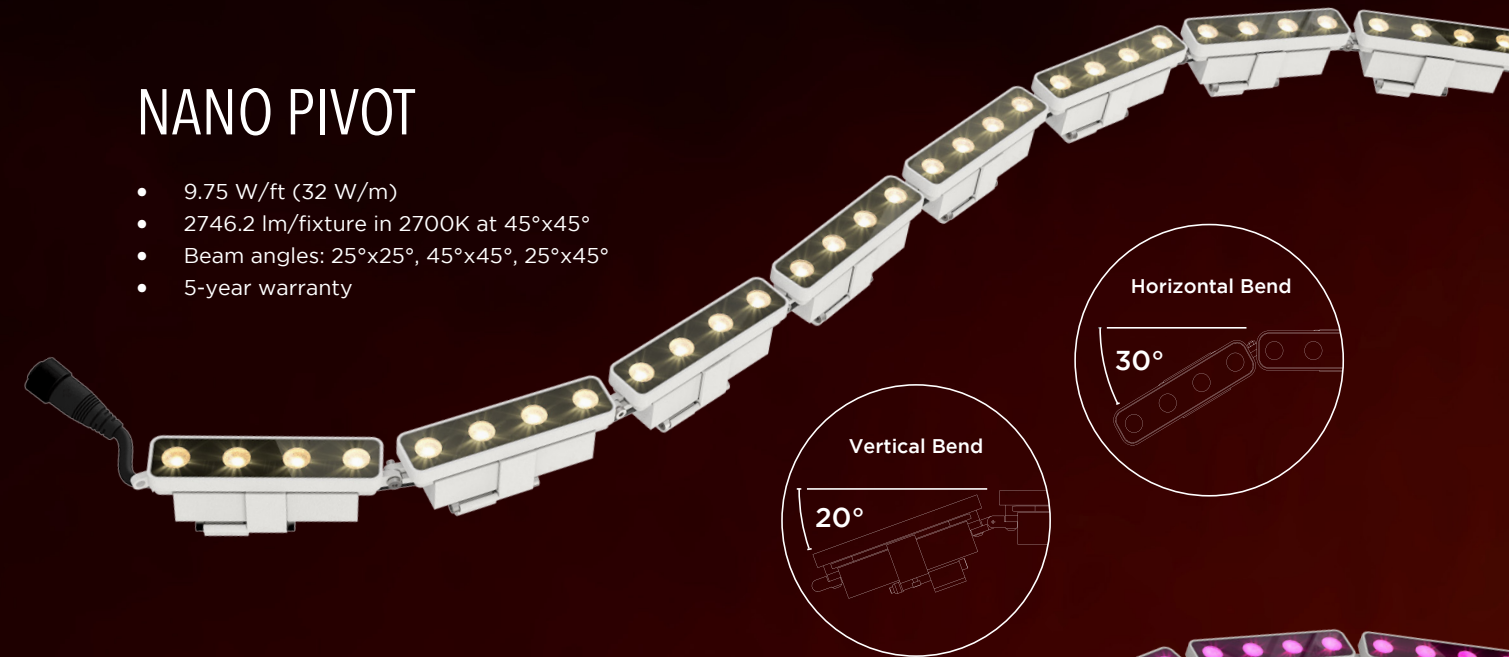


# GRAZERS

Also part of the Armor Series, Nano Pivot fixtures are hinged grazers that provide flexibility in your lighting design. Create dramatic effects around cornices and curved facades, columns or landscaping. Each section of the Nano Pivot features 4 LEDs in a programmable 5-in. (125 mm) pixel. There are 8 pixels per 3.28 ft (1 m) chain. Daisy chain up to 6 fixtures. The Nano Pivot is available in two dimmable Static White CCTs (2700K, 4000K) and the Nano Pivot RGBW features color changing pixels (RGB+3000K, RGB+4000K). Both Pivot models are rated IP67 for external use, offer 3 beam angle options and utilize 24V external drivers.

## NANO PIVOT

- 9.75 W/ft (32 W/m)
- 2746.2 lm/fixture in 2700K at 45°x45°
- Beam angles: 25°x25°, 45°x45°, 25°x45°
- 5-year warranty



## NANO PIVOT RGBW

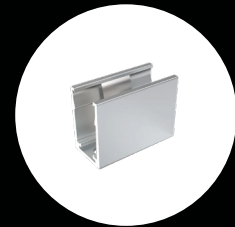
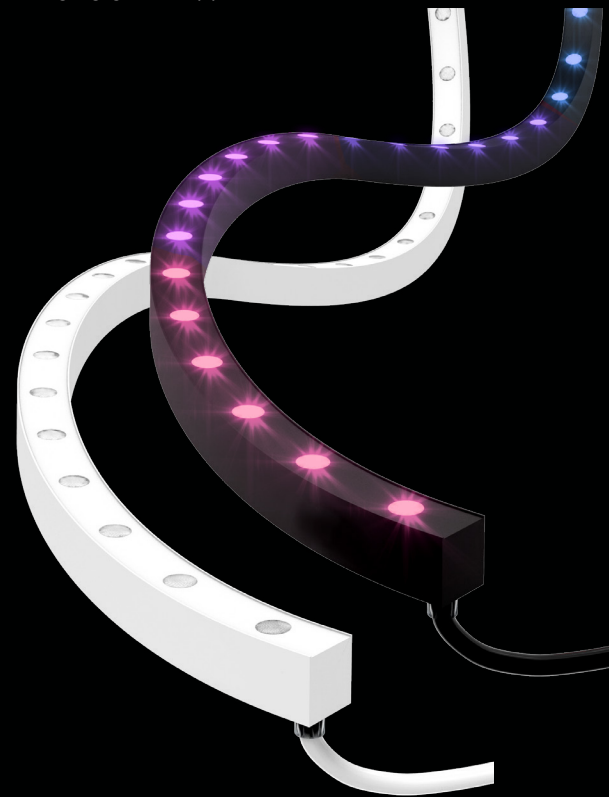
- 9.75 W/ft (32 W/m)
- 1271 lm/fixture at 25°x25° (all on)
- Beam angles: 25°x25°, 45°x45°, 25°x45°
- 5-year warranty



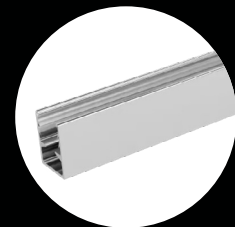


# DUAL BEND GRAZERS

The Nano Flex RGBW is a color changing flexible silicone grazer tube with three beam angle options. Nano Flex RGBW is available with four Static White CCTs (1800K-4000K) for varied brightness. This IP68 grazer is compatible with SPI (Serial Peripheral Interface) controls. Program it by the pixel in 10 in. (250 mm) segments. Dual bending capabilities (side- and top-bending!) make it an amazing solution for complex color changing grazer applications.

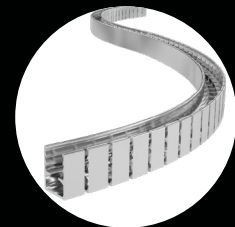


**Mounting Clip**



**Mounting Channel**

Length up to 3 ft, 3.3 in. (1 m)

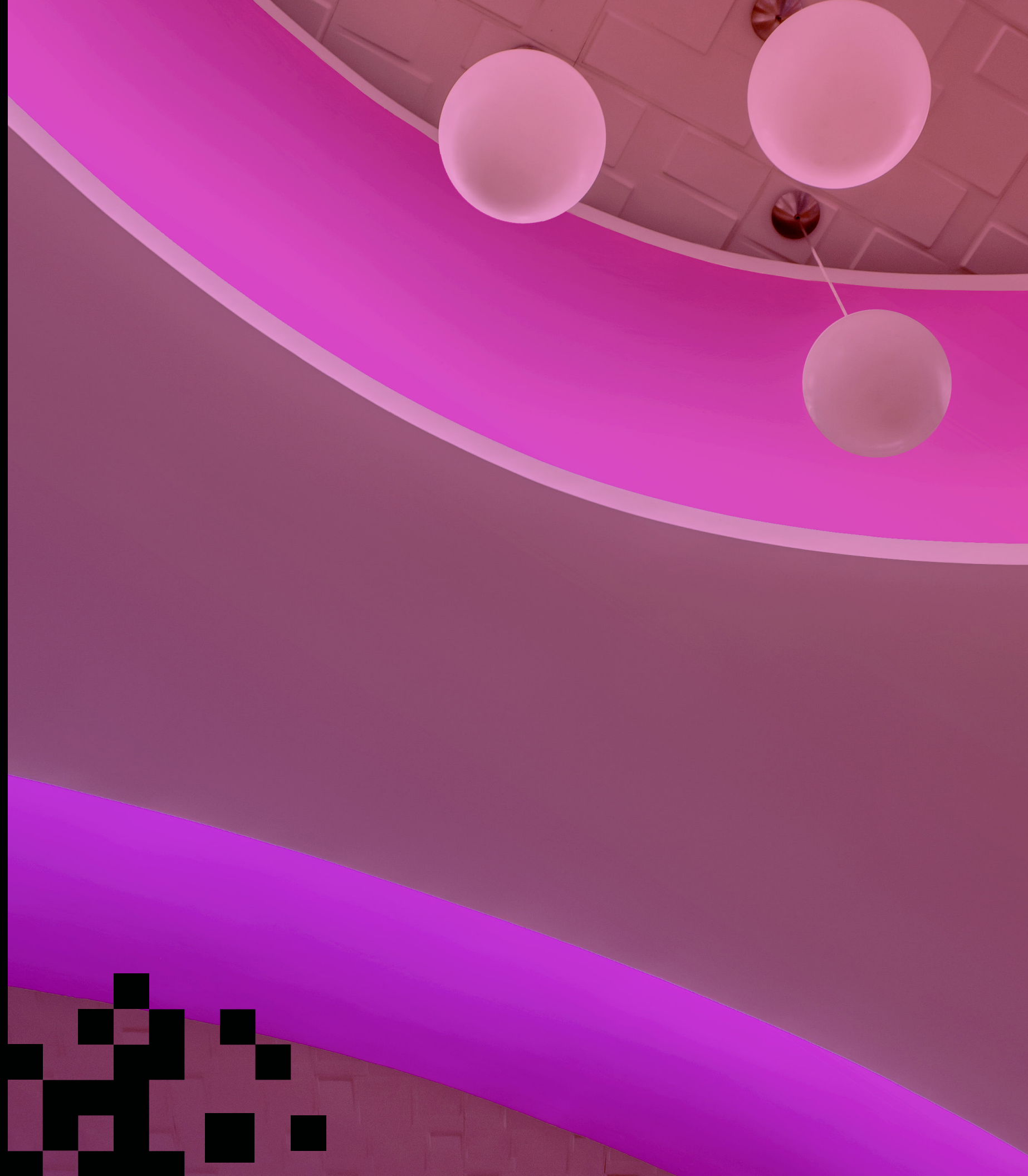


**Curved Mounting Channel**

Length up to 3 ft, 3.3 in. (1 m)  
(for side bending applications only)

## NANO FLEX RGBW

- 7 W/ft (23 W/m), uses SPI controls
- RGBW (1800K, 2700K, 3000K, 4000K)
- 7 LEDs/ft (24 LEDs/m)
- 9.84 in. (250 mm) min. side bending diameter
- 13.78 in. (350 mm) min. top bending diameter
- 16 ft 4 in. (5 m) max. length
- Beam angles: 15°x15°, 38°x38°, 60°x60°
- IP68 and IK08 ratings
- Available in white or black housing color
- Use with mounting clips, mounting channel or curved mounting channel
- 5-year warranty

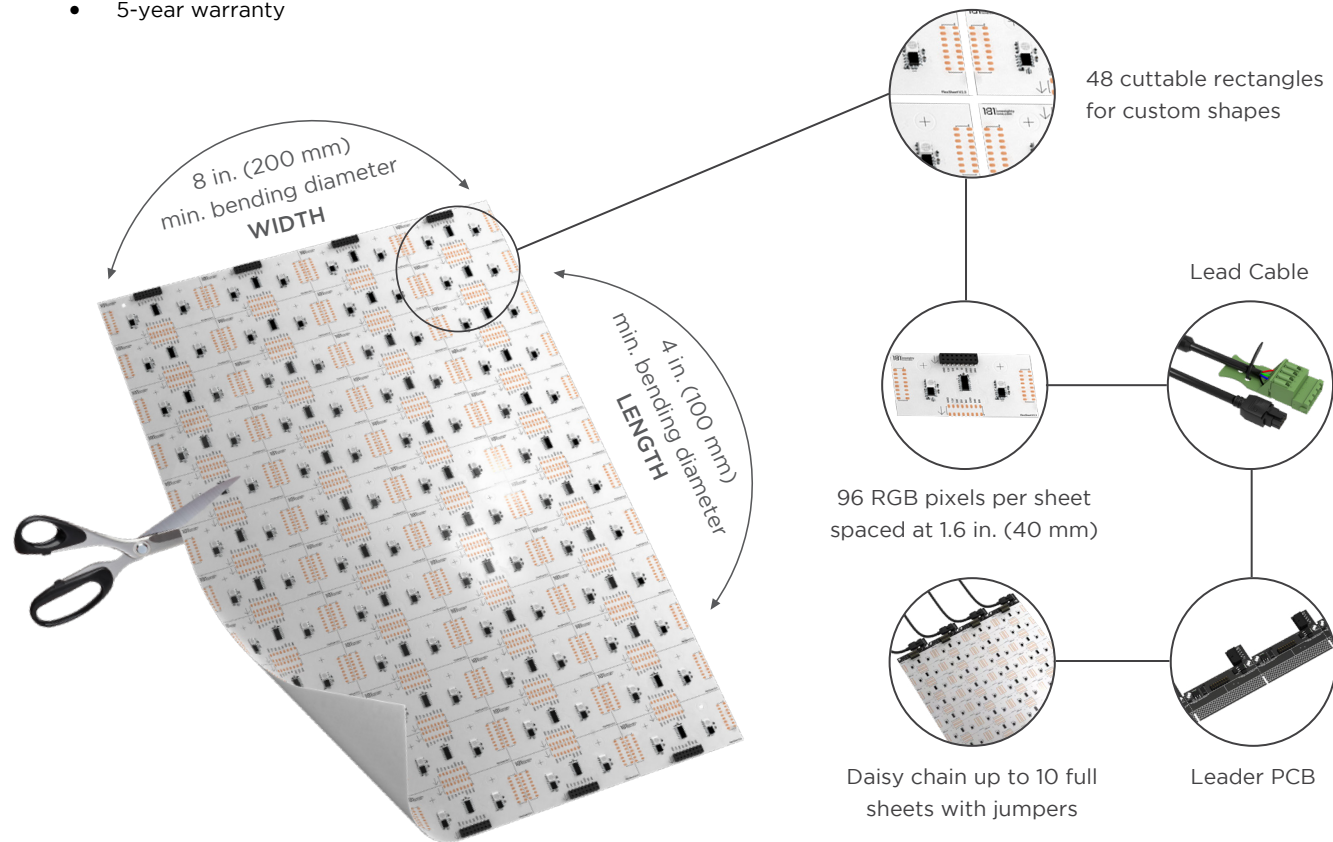




The Flexible BackLyte Addressable Sheet lets you program and control individual color changing pixels for precision effects in interior backlighting applications. Each incredibly thin 12.6 x 18.9 in. (320 x 480 mm) 12V sheet includes 96 RGB pixels spaced at just 1.6 in. (40 mm). Trim, bend and daisy chain up to 10 Flexible BackLyte Addressable Sheets to create custom shapes. Cut around any obstacles!

## FLEXIBLE BACKLYTE ADDRESSABLE SHEET

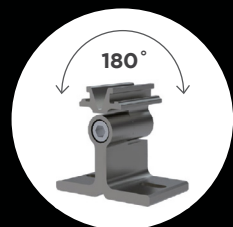
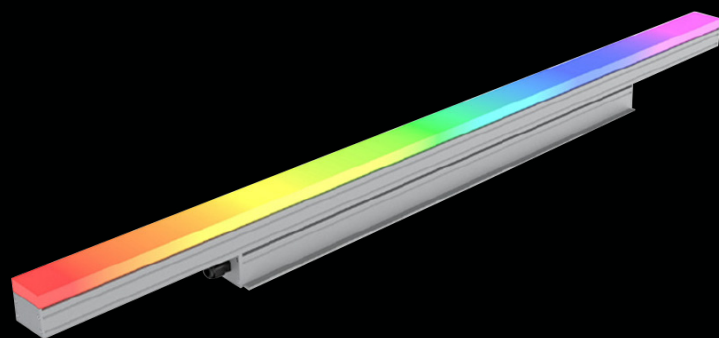
- 48 cuttable rectangles for custom shapes
- 624 lm/sheet (all on)
- 96 RGB pixels per sheet spaced at 1.6 in. (40 mm)
- 8 in. (50 mm) min. bending diameter (width)
- 4 in. (100 mm) min. bending diameter (length)
- Daisy chain up to 10 full sheets
- 5-year warranty



# PIXEL BAR

The Pixel Bar is a color changing RGBW fixture designed and engineered for façade and bridge illumination and installations that require seamless light. Choose from square or rounded acrylic lenses that diffuse the LEDs for a diode-free application. The Pixel Bar features 1.97 in. (50 mm) addressable pixels that can be controlled by DMX for amazing effects. It is available in three set sizes up to 47.25 in. (1200 mm).

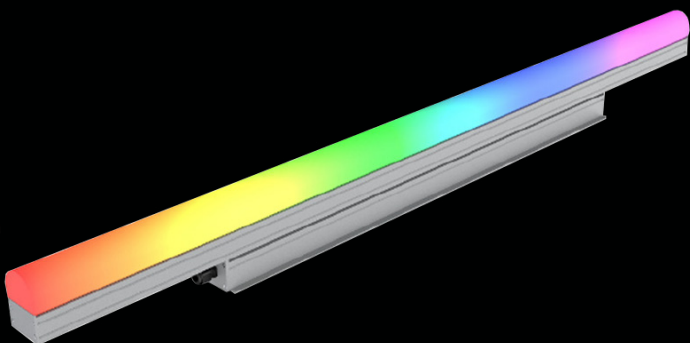
## PIXEL BAR SQUARE MILKY LENS



### Tiltable Stand

available for adjustable mounting angles from 0°-180°

## PIXEL BAR ROUND MILKY LENS



### Fixed Mounting

for mounting without adjustable angles

- Pixel Bar fixtures use AC power -- no external driver required!
- Extruded aluminum bar with square or round milky acrylic lens
- 7.9 W/ft (26 W/m)
- Addressable 1.97 in. (50 mm) pixels
- Three sizes: 23.62 in. (600 mm), 35.43 in. (900 mm), 47.24 in. (1200 mm)
- Square lens with 140°x110° beam angle
- Round lens with 180°x110° beam angle
- IP66 with quick-connect plug
- 5-year warranty





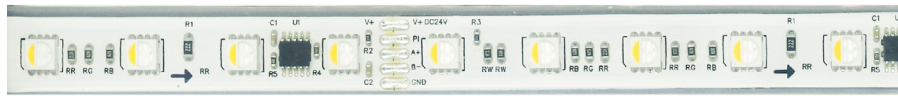



# RIBBONLYTE

## RGBW ADDRESSABLE RIBBONLYTE

RGBW Addressable RibbonLyte allows you to create tailored patterns of light that are only limited by the imagination. Each 4-in. (100 mm) pixel can be individually controlled. Create custom fixtures with our RGBW Addressable RibbonLyte and our channel extrusions, then pair them with SPI or DMX control systems to program moving effects, patterns, chases and more for an unforgettable light display.

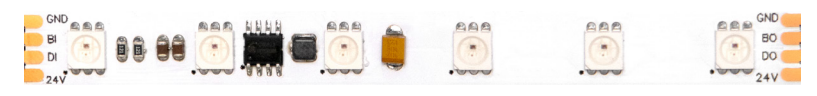
- 6 W/ft (19.7 W/m)
- 4-in. pixels (100 mm) contain 6 LEDs
- 18 LEDs/ft. (60 LEDs/m)
- 242.1 lm/ft (794.4 lm/m) at 100%
- Max. run length: 16 ft 5.83 in. (5.025 m)
- 3-year warranty



## PIXEL RIBBONLYTE

Pixel RibbonLyte allows customized patterns of light that can be programmed to a single LED for limitless design potential! Program each color changing RGB LED pixel individually to create precise moving effects, patterns, chases and more throughout large light displays. Control 18 solo pixels per foot (60 pixels per meter).

- 5.3 W/ft (17.5 W/m)
- 0.66 in. (16.66 mm) LED (pixel) spacing
- 18 LEDs/ft (60 LEDs/m)
- 137 lm/ft (450 lm/m) all on
- 24 ft, 7.27 in. (7.5 m) max. run length
- 5-year warranty



# CONTACT US

CALL US. EMAIL US. WRITE US A LETTER.  
CONNECT WITH US ON SOCIAL MEDIA.



## PRICING & SALES SUPPORT

T: (+1) 212 629 6830, ext. 300  
E: SalesSupport@GENLEDBrands.com



## TECHNICAL SUPPORT

T: (+1) 212 629 6830, ext. 301  
E: Tech@GENLEDBrands.com



## CUSTOMER SERVICE

T: (+1) 212 629 6830, ext. 304  
E: CustomerService@GENLEDBrands.com



[linkedin.com/company/genledacolyte](https://www.linkedin.com/company/genledacolyte)



[facebook.com/acolyteled](https://www.facebook.com/acolyteled)



[instagram.com/acolyte\\_led](https://www.instagram.com/acolyte_led)

See our product videos in the Media section at [AcolyteLED.com](https://www.AcolyteLED.com)



### GLOBAL HQ & AMERICAN SALES

U.S., Canada, Central and South America

320 Murray Hill Pkwy  
East Rutherford, NJ 07073  
T: (+1) 212 629 6830  
E: Sales-US@GENLEDBrands.com

### EUROPEAN SALES HQ

With offices in Netherlands, UK, Italy, Germany

De Corridor 16L en 16K  
3621ZB Breukelen  
The Netherlands  
T: (+31) 346 235 000  
E: SalesEurope@GENLEDBrands.com

### MEINA SALES HQ

Middle East, India, Africa

PO Box 371378, #823, Building 4EA  
Dubai Airport Free Zone, Dubai, UAE  
T: (+971) 4 701 7901  
E: SalesMEINA@genledbrands.com

### ASIA-PACIFIC SALES HQ

With offices in Shenzhen, Shanghai, Singapore, Australia

Room 310-311, Building 8A-2,  
Dezhigao Science Innovation Park, Zone 72  
Xin'An Street,  
Bao'An, Shenzhen,  
China  
Sales: (+86) 139 1836 3905  
Office: (+86) 755 8529 0710  
E: Sales-Pacific@GENLEDBrands.com

### CONNECT WITH US

Stay informed about our industry-leading product and service updates, recent installations and more!

[www.GENLEDBrands.com](https://www.GENLEDBrands.com)  
[AcolyteLED.com](https://www.AcolyteLED.com)  
[AgiLight.com](https://www.AgiLight.com)



Pixel Bar fixtures use AC power  
no external driver required



© 2024 GENLED Brands™. All rights reserved.  
Some designs and technologies in the catalog are covered by U.S. Patents.

[www.AcolyteLED.com](http://www.AcolyteLED.com)

REV.19JUL2024