



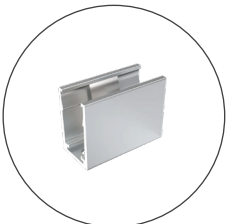
NANO FLEX RGBW **DUAL-BENDING WALL GRAZER**

The Nano Flex RGBW is a color changing flexible silicone grazer tube with three beam angle options. Nano Flex RGBW is available with four Static White CCTs (1800K-4000K) for varied brightness. This IP68 grazer is compatible with SPI (Serial Peripheral Interface) controls. Program it by the pixel in 10 in. (250 mm) segments. Dual bending capabilities (side- and top-bending!) make it an amazing solution for complex color changing grazer applications.

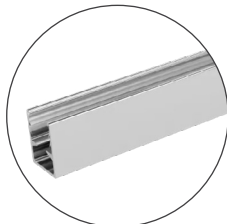
FEATURES:

- 7 W/ft (23 W/m), uses SPI controls
- RGBW (1800K, 2700K, 3000K, 4000K)
- 7 LEDs/ft (24 LEDs/m)
- 9.84 in. (250 mm) minimum side-bending diameter
- 13.78 in. (350 mm) minimum top-bending diameter
- 16 ft 4 in. (5 m) max. length
- Beam angles: 15°x15°, 38°x38°, 60°x60°
- IP68 and IK08 ratings
- Available in white or black housing color
- 5-year warranty

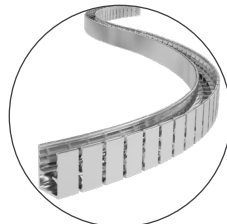
MOUNTING OPTIONS



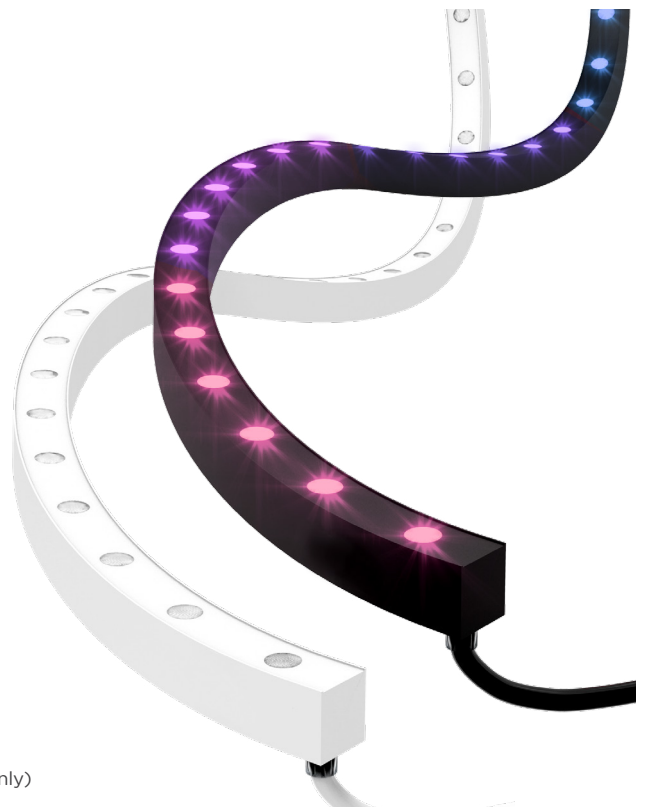
Mounting Clip



Mounting Channel



Curved Mounting Channel
(for side bending applications only)



COLORS



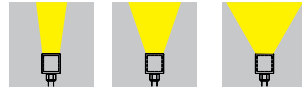
RGBW

BASE COLORS



Black White

BEAM ANGLES



15°x 15° 38°x 38° 60°x 60°



RoHS

IP68

IK08

REV. 15JUL2024