

100W DIMMABLE DALI DRIVER

The 100W Dimmable DALI Driver is a UL Listed high efficiency 24V constant voltage driver for use with single-color LEDs.

- Slender, lightweight polycarbonate housing
- Removable endcap allows length adjustment
- Soft on and fade-in dimming functions
- Flicker-free dimming from 0-100%, down to 0.1%
- Innovative thermal technology protects power life
- Overheating, over voltage, overload, short circuit protections with automatic recovery
- Suitable for indoor use
- 5-year warranty



Applications:

Commercial	Hospitality	Residential
Entertainment	Museums	Retail
Healthcare	Public Spaces	



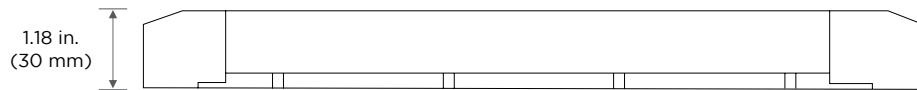
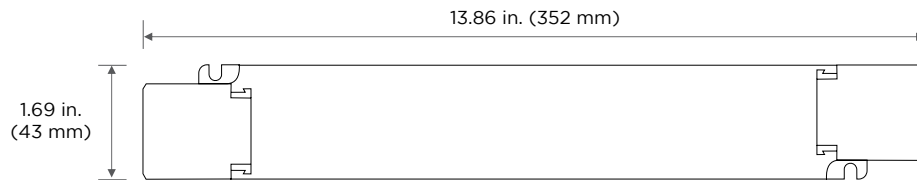
ORDERING GUIDE

Category	Voltage	Wattage	Dimming Option	Number of Channels
DRV	24	100	DALI	1CH
DRV - Driver	24 - 24 V	100 - 100W	DALI - Dali Dimmable	1CH - 1 channel

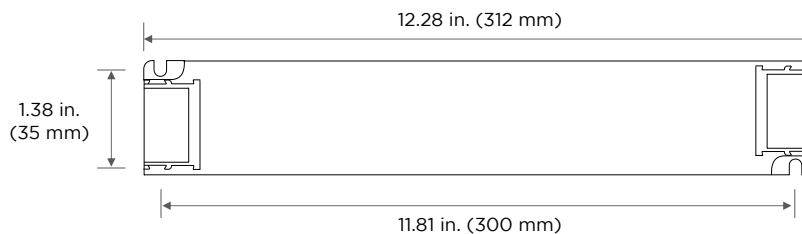
NOTE: Use only in an enclosure. When ordering, please specify constant current LED fixture use (wall washer, RibbonLyte, etc.).

DIMENSIONS

Length: 13.86 in. (352 mm)
Width: 1.69 in. (43 mm)
Height: 1.18 in. (30 mm)



WITHOUT ENDCAPS



SPECIFICATIONS

100W DIMMABLE DALI DRIVER	
	
Output Voltage (DC)	24V DC
Output Wattage	100 W
Number of Channels	1
Input Voltage	120-277V AC
Max Power	100 W
Rated Voltage	24V DC
Output Voltage Range	24Vdc ± 0.5Vdc
Ripple & Noise	Switch ripple ≤ 150mV, noise ≤ 500mV
Power Factor	PF > 0.99/120V AC, PF > 0.95/230V AC, PF > 0.9/277V AC (at full load)
Input Current	Max. 1A/120V AC, 0.55A/230V AC, 0.45A/277V AC
Output Current	Max. 4.17A
Input Frequency	50/60 Hz
PWM Frequency (Output)	3600 Hz
Efficiency (typical)	93%
Safety Standards	US: UL, UL8750 EU: CE, EN61347-1, EN61347-2-13, EN62384
IP Rating	IP20
Dimming Range	0-100%, down to 0.1%
Dimming Interface	DALI-2, Push DIM
Dimensions (L x W x H)	13.86 x 1.69 x 1.18 in. (352 x 43 x 30 mm)
Weight (gross weight)	0.95 lb (430 g)
Lifetime	Up to 50,000 hours
Warranty	5 years

MAX LENGTH BETWEEN DRIVER & RIBBONLYTE AT FULL LOAD		
Wire Gauge	Feet	Meters
24 AWG / 0.20 mm ²	5.96	1.818
22 AWG / 0.33 mm ²	10.09	3.077
20 AWG / 0.52 mm ²	15.44	4.706
18 AWG / 0.82 mm ²	24.99	7.619
16 AWG / 1.31 mm ²	40.37	12.308
14 AWG / 2.08 mm ²	64.00	19.512
12 AWG / 3.31 mm ²	100.92	30.769
10 AWG / 5.26 mm ²	159.03	48.485
8 AWG / 8.37 mm ²	249.90	76.190

NOTE: Calculations include a standard 10% buffer

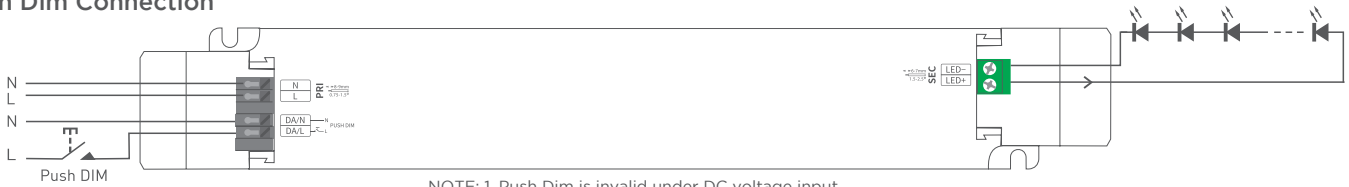
WIRING DIAGRAMS

DALI Connection



0-100% dimming range

Push Dim Connection



NOTE: 1. Push Dim is invalid under DC voltage input
2. Dimming interface priority: DALI first, Push DIM next.

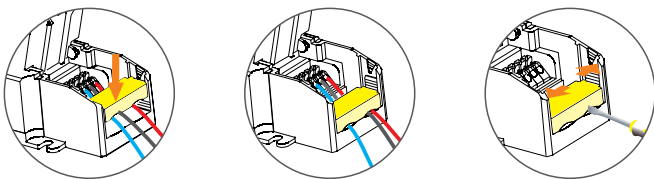
- 0-100% dimming range
- Short press to turn on/off
- Long press to dim



- On/off control: Short press.
- Stepless dimming: Long press.
- With every other long press, the brightness level goes to the opposite direction.
- Dimming memory: Go to the brightness level adjusted previously when lights are turned on.
- Switch on and off within 10 seconds, it will not have the same gradual effect as normal boot, but directly to the most bright level.

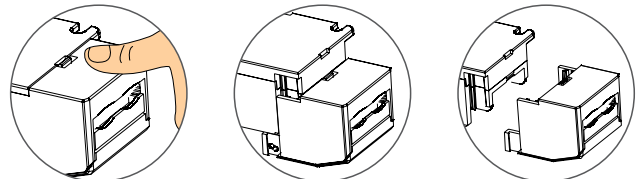
INSTALLATION

Tension Plate



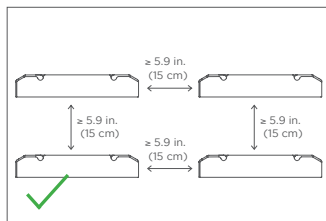
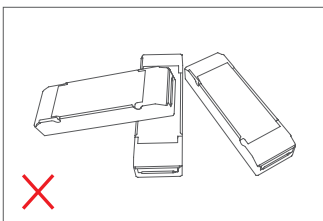
Push the tension plate down to fix the electric wires. Push the side plate outwards and remove the tension plate by prying it up with a tool at the same time.

Remove the Protective Housing

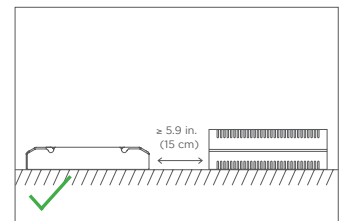
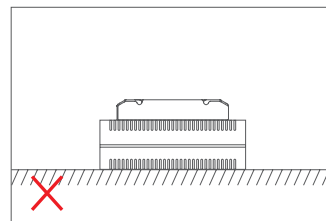


Pull the housing left and right from the bottom to remove it.

Precautions



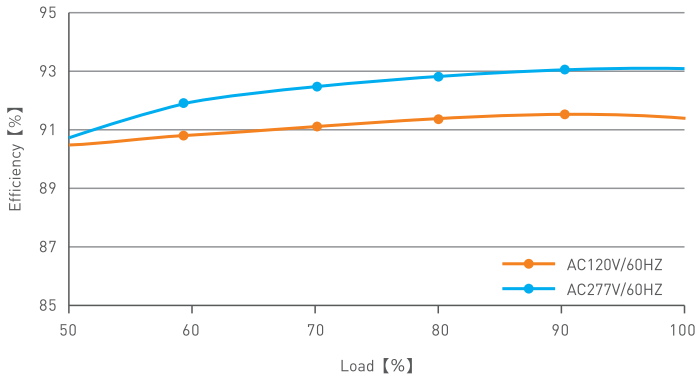
Please do not stack the products. The distance between two products should be ≥ 5.9 in. (15 cm) so as not to affect heat dissipation and the lifespan of the products.



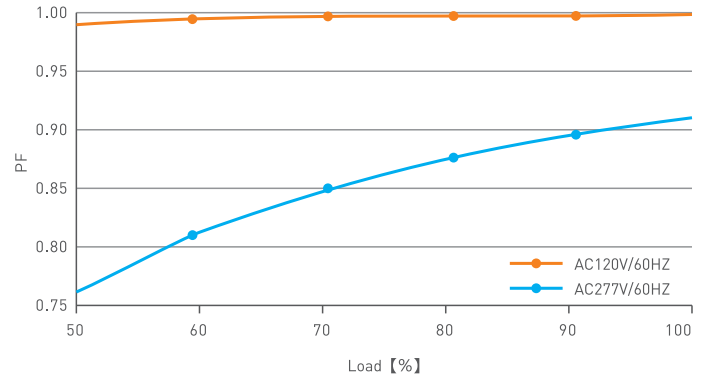
Please do not place the products on LED drivers. The distance between the product and the driver should be ≥ 5.9 in. (15 cm) so as not to affect heat dissipation and shorten the lifespan of the products.

PERFORMANCE

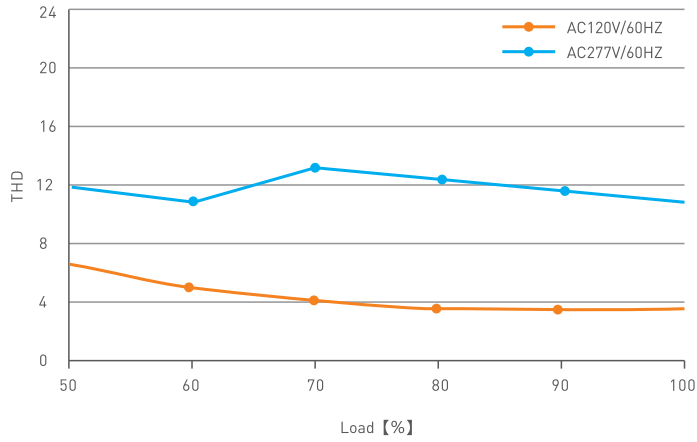
Efficiency vs Load



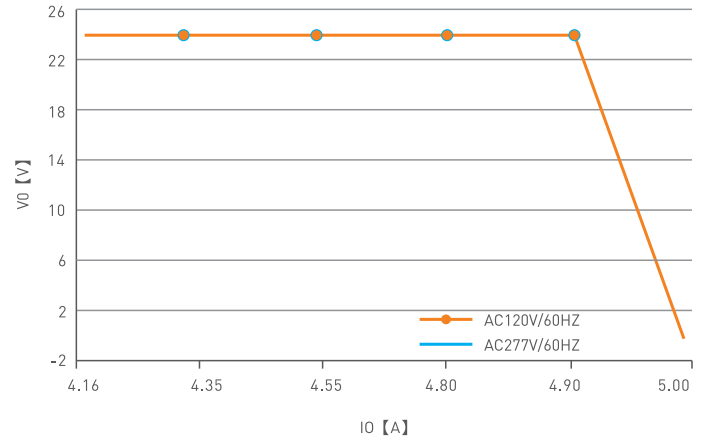
Power Factor Characteristic



THD VS Load



Over Load Diagram



Acolyte does not warrant or represent that the information is free from errors or omission. The information may change without notice and Acolyte is not in any way liable for the accuracy of any information printed and stored or in any way interpreted or used.