

100W DIMMABLE DALI DRIVER

The 100W Dimmable DALI Driver is a UL Listed high efficiency 24V constant voltage driver for use with single-color LEDs.

- Slender, lightweight polycarbonate housing
- Removable endcap allows length adjustment
- Soft on and fade-in dimming functions
- Flicker-free dimming from 0-100%, down to 0.1%
- Innovative thermal technology protects power life
- Overheating, over voltage, overload, short circuit protections with automatic recovery
- Suitable for indoor use
- 5-year warranty



Applications:

| | | |
|---------------|---------------|-------------|
| Commercial | Hospitality | Residential |
| Entertainment | Museums | Retail |
| Healthcare | Public Spaces | |



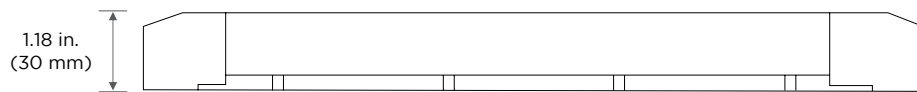
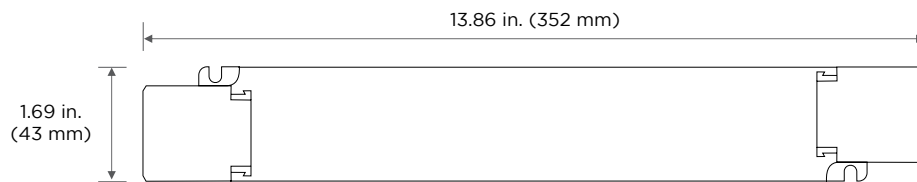
ORDERING GUIDE

| Category | Voltage | Wattage | Dimming Option | Number of Channels |
|--------------|-----------|------------|----------------------|--------------------|
| DRV | 24 | 100 | DALI | 1CH |
| DRV - Driver | 24 - 24 V | 100 - 100W | DALI - Dali Dimmable | 1CH - 1 channel |

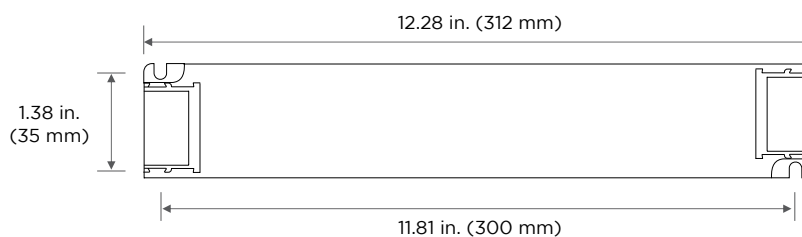
NOTE: Use only in an enclosure. When ordering, please specify constant current LED fixture use (wall washer, RibbonLyte, etc.).

DIMENSIONS

Length: 13.86 in. (352 mm)
Width: 1.69 in. (43 mm)
Height: 1.18 in. (30 mm)



WITHOUT ENDCAPS



SPECIFICATIONS

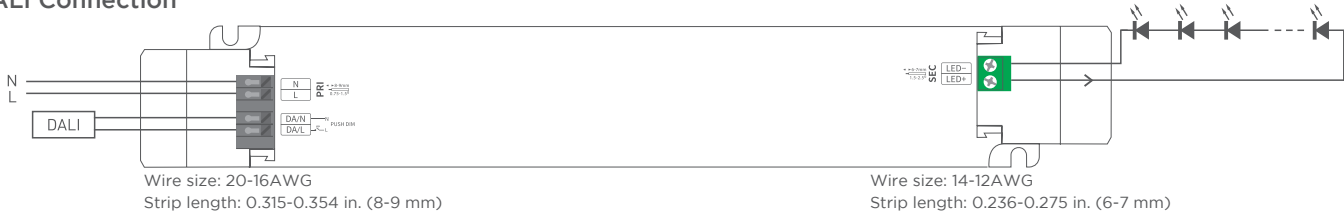
| 100W DIMMABLE DALI DRIVER | |
|---------------------------|--|
| |  |
| Output Voltage (DC) | 24V DC |
| Output Wattage | 100 W |
| Number of Channels | 1 |
| Input Voltage | 120-277V AC |
| Max Power | 100 W |
| Rated Voltage | 24V DC |
| Output Voltage Range | 24Vdc ± 0.5Vdc |
| Ripple & Noise | Switch ripple ≤ 150mV, noise ≤ 500mV |
| Power Factor | PF > 0.99/120V AC, PF > 0.95/230V AC, PF > 0.9/277V AC (at full load) |
| Input Current | Max. 1A/120V AC, 0.55A/230V AC, 0.45A/277V AC |
| Output Current | Max. 4.17A |
| Input Frequency | 50/60 Hz |
| PWM Frequency (Output) | 3600 Hz |
| Efficiency (typical) | 93% |
| Safety Standards | US: UL, UL8750 EU: CE, EN61347-1, EN61347-2-13, EN62384 |
| IP Rating | IP20 |
| Dimming Range | 0-100%, down to 0.1% |
| Dimming Interface | DALI-2, Push DIM |
| Dimensions (L x W x H) | 13.86 x 1.69 x 1.18 in. (352 x 43 x 30 mm) |
| Weight (gross weight) | 0.95 lb (430 g) |
| Lifetime | Up to 50,000 hours |
| Warranty | 5 years |

| MAX LENGTH BETWEEN DRIVER & RIBBONLYTE AT FULL LOAD | | |
|---|--------|--------|
| Wire Gauge | Feet | Meters |
| 24 AWG / 0.20 mm ² | 5.96 | 1.818 |
| 22 AWG / 0.33 mm ² | 10.09 | 3.077 |
| 20 AWG / 0.52 mm ² | 15.44 | 4.706 |
| 18 AWG / 0.82 mm ² | 24.99 | 7.619 |
| 16 AWG / 1.31 mm ² | 40.37 | 12.308 |
| 14 AWG / 2.08 mm ² | 64.00 | 19.512 |
| 12 AWG / 3.31 mm ² | 100.92 | 30.769 |
| 10 AWG / 5.26 mm ² | 159.03 | 48.485 |
| 8 AWG / 8.37 mm ² | 249.90 | 76.190 |

NOTE: Calculations include a standard 10% buffer

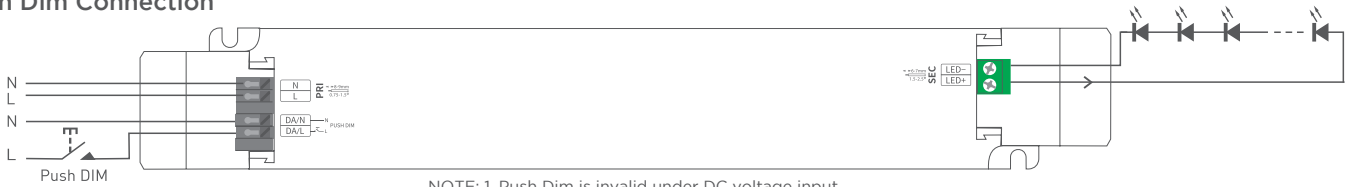
WIRING DIAGRAMS

DALI Connection



0-100% dimming range

Push Dim Connection



NOTE: 1. Push Dim is invalid under DC voltage input
2. Dimming interface priority: DALI first, Push DIM next.

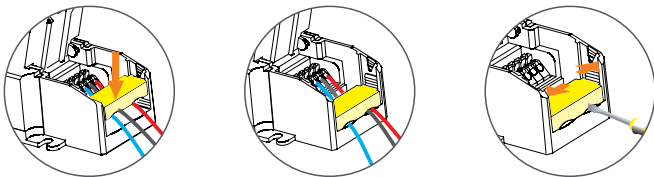
- 0-100% dimming range
- Short press to turn on/off
- Long press to dim



- On/off control: Short press.
- Stepless dimming: Long press.
- With every other long press, the brightness level goes to the opposite direction.
- Dimming memory: Go to the brightness level adjusted previously when lights are turned on.
- Switch on and off within 10 seconds, it will not have the same gradual effect as normal boot, but directly to the most bright level.

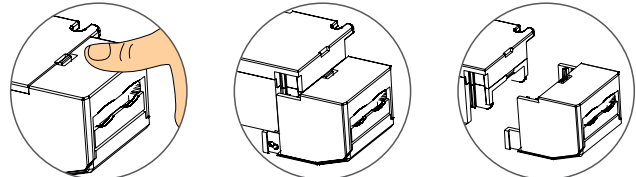
INSTALLATION

Tension Plate



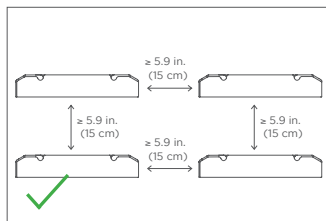
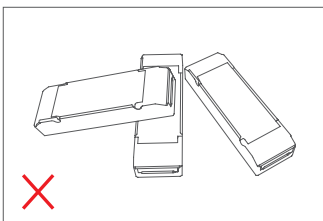
Push the tension plate down to fix the electric wires. Push the side plate outwards and remove the tension plate by prying it up with a tool at the same time.

Remove the Protective Housing

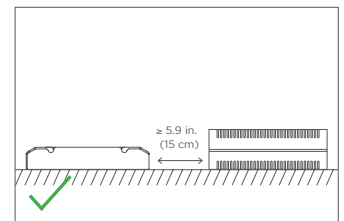
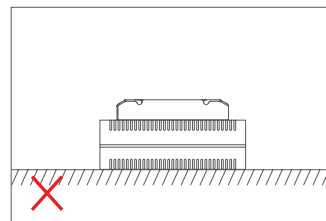


Pull the housing left and right from the bottom to remove it.

Precautions



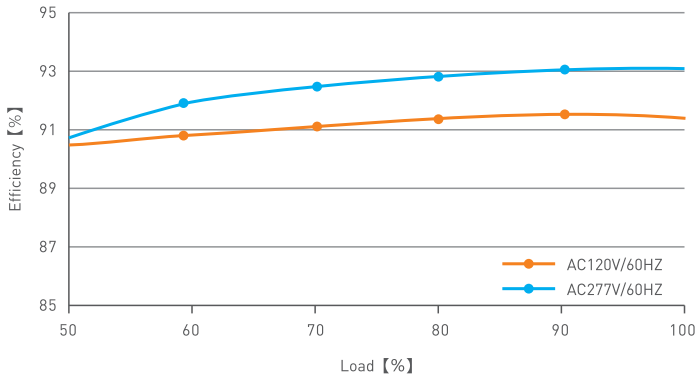
Please do not stack the products. The distance between two products should be ≥ 5.9 in. (15 cm) so as not to affect heat dissipation and the lifespan of the products.



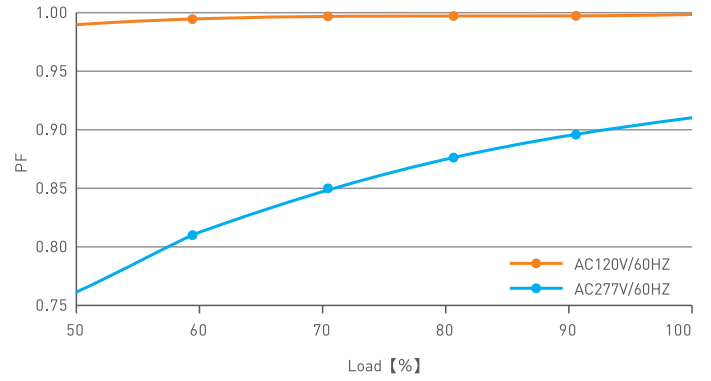
Please do not place the products on LED drivers. The distance between the product and the driver should be ≥ 5.9 in. (15 cm) so as not to affect heat dissipation and shorten the lifespan of the products.

PERFORMANCE

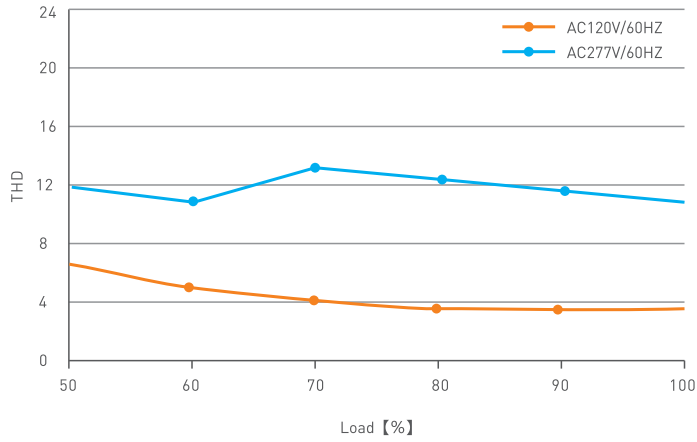
Efficiency vs Load



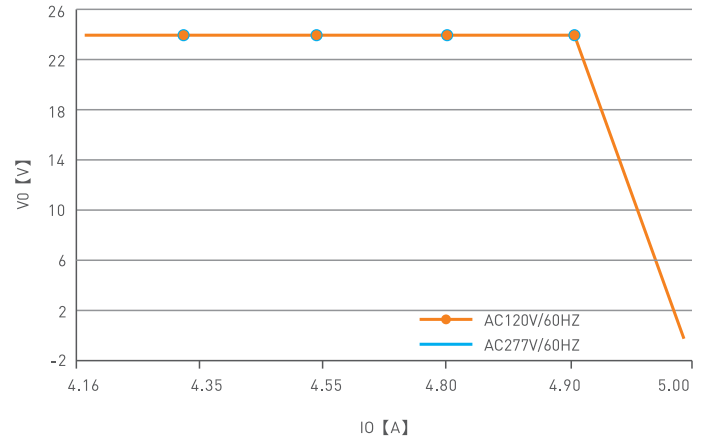
Power Factor Characteristic



THD VS Load



Over Load Diagram



Acolyte does not warrant or represent that the information is free from errors or omission. The information may change without notice and Acolyte is not in any way liable for the accuracy of any information printed and stored or in any way interpreted or used.