



Date _____ Project _____

Notes _____

100W DIMMABLE DALI DRIVER

The 100W Dimmable DALI Driver is a UL Listed high efficiency 24V constant voltage driver for use with single-color LEDs.

- Slender, lightweight polycarbonate housing
- Removable endcap allows length adjustment
- Soft on and fade-in dimming functions
- Flicker-free dimming from 0-100%, down to 0.1%
- Innovative thermal technology protects power life
- Overheating, over voltage, overload, short circuit protections with automatic recovery
- Suitable for indoor use
- 5-year warranty

Applications:

Commercial
Entertainment
Healthcare

Hospitality
Museums
Public Spaces

Residential
Retail



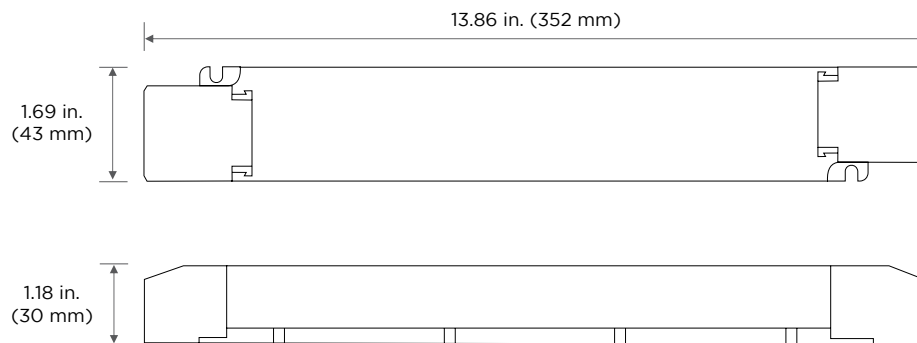
ORDERING GUIDE

Category	Voltage	Wattage	Dimming Option	Number of Channels
DRV	24	100	DALI	1CH
DRV - Driver	24 - 24 V	100 - 100W	DALI - Dali Dimmable	1CH - 1 channel

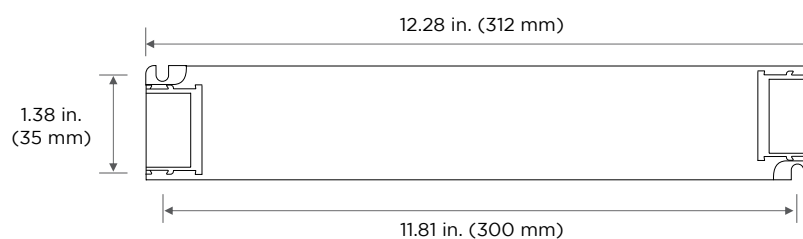
NOTE: Use only in an enclosure. When ordering, please specify constant current LED fixture use (wall washer, RibbonLyte, etc.).

DIMENSIONS

Length: 13.86 in. (352 mm)
Width: 1.69 in. (43 mm)
Height: 1.18 in. (30 mm)



WITHOUT ENDCAPS



SPECIFICATIONS

100W DIMMABLE DALI DRIVER	
	
Output Voltage (DC)	24V DC
Output Wattage	100 W
Number of Channels	1
Input Voltage	120-277V AC
Max Power	100 W
Rated Voltage	24V DC
Output Voltage Range	24Vdc \pm 0.5Vdc
Ripple & Noise	Switch ripple \leq 150mV, noise \leq 500mV
Power Factor	PF > 0.99/120V AC, PF > 0.95/230V AC, PF > 0.9/277V AC (at full load)
Input Current	Max. 1A/120V AC, 0.55A/230V AC, 0.45A/277V AC
Output Current	Max. 4.17A
Input Frequency	50/60 Hz
PWM Frequency (Output)	3600 Hz
Efficiency (typical)	93%
Safety Standards	US: UL, UL8750 EU: CE, EN61347-1, EN61347-2-13, EN62384
IP Rating	IP20
Dimming Range	0-100%, down to 0.1%
Dimming Interface	DALI-2, Push DIM
Dimensions (L x W x H)	13.86 x 1.69 x 1.18 in. (352 x 43 x 30 mm)
Weight (gross weight)	0.95 lb (430 g)
Lifetime	Up to 50,000 hours
Warranty	5 years

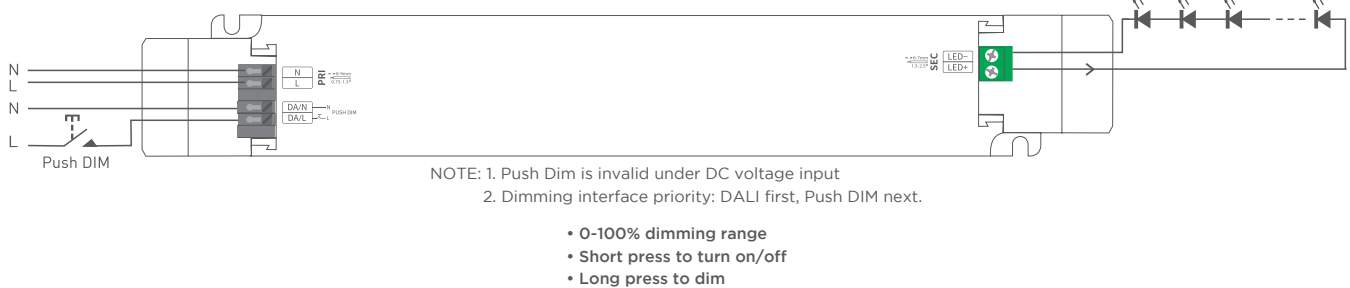
MAX LENGTH BETWEEN DRIVER & RIBBONLYTE AT FULL LOAD			
Wire Gauge	Feet	Meters	
24 AWG / 0.25 mm ²	5	1.524	
22 AWG / 0.34 mm ²	8	2.4384	
20 AWG / 0.5 mm ²	14	4.2672	
18 AWG / 0.75 mm ²	22	6.7056	
16 AWG / 15 mm ²	25	7.62	
14 AWG / 2.5 mm ²	56	17.0688	
12 AWG / 4 mm ²	90	27.432	
10 AWG / 6 mm ²	143	43.5864	
8 AWG / 10 mm ²	228	69.4944	

WIRING DIAGRAMS

DALI Connection



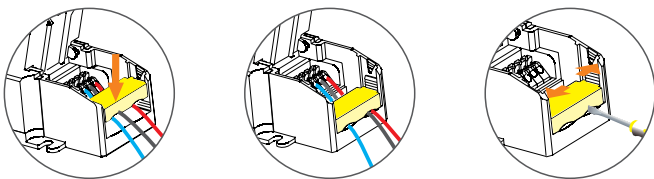
Push Dim Connection



- On/off control: Short press.
- Stepless dimming: Long press.
- With every other long press, the brightness level goes to the opposite direction.
- Dimming memory: Go to the brightness level adjusted previously when lights are turned on.
- Switch on and off within 10 seconds, it will not have the same gradual effect as normal boot, but directly to the most bright level.

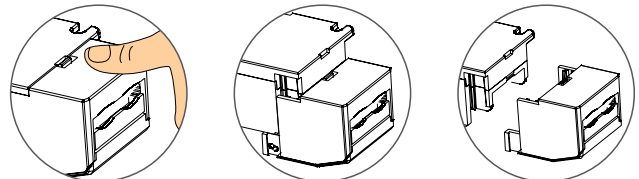
INSTALLATION

Tension Plate



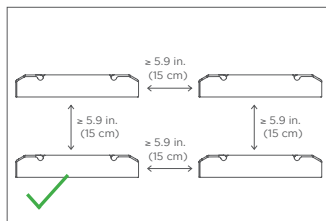
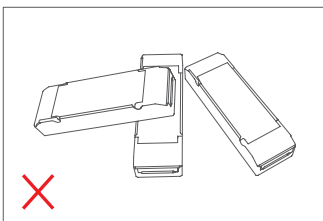
Push the tension plate down to fix the electric wires. Push the side plate outwards and remove the tension plate by prying it up with a tool at the same time.

Remove the Protective Housing

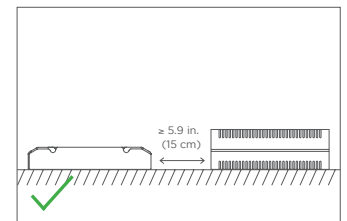
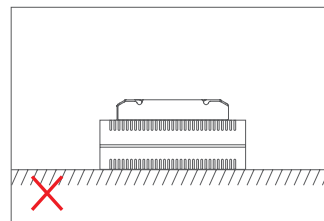


Pull the housing left and right from the bottom to remove it.

Precautions



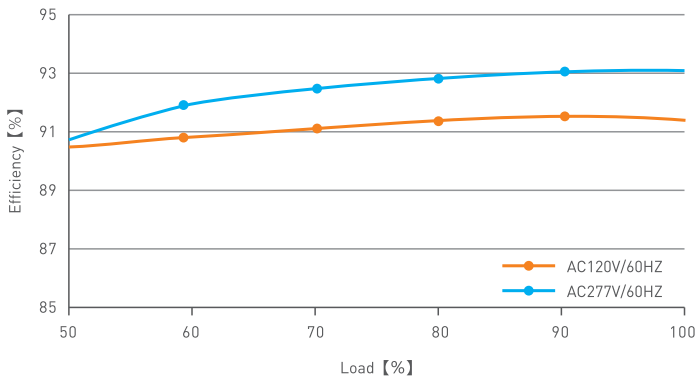
Please do not stack the products. The distance between two products should be ≥ 5.9 in. (15 cm) so as not to affect heat dissipation and the lifespan of the products.



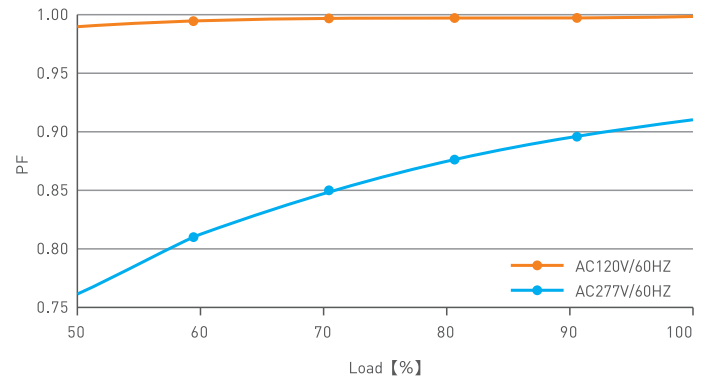
Please do not place the products on LED drivers. The distance between the product and the driver should be ≥ 5.9 in. (15 cm) so as not to affect heat dissipation and shorten the lifespan of the products.

PERFORMANCE

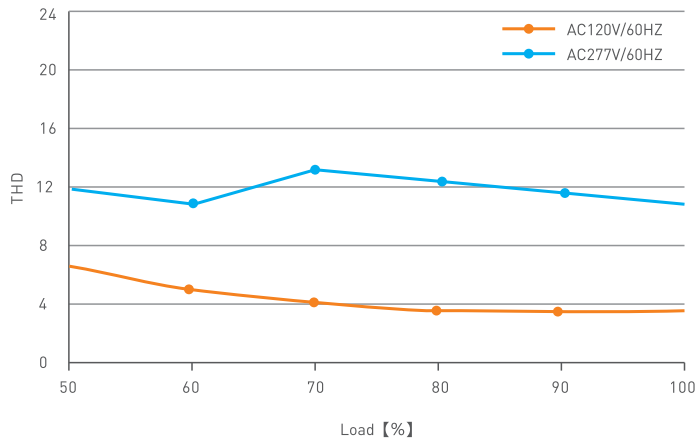
Efficiency vs Load



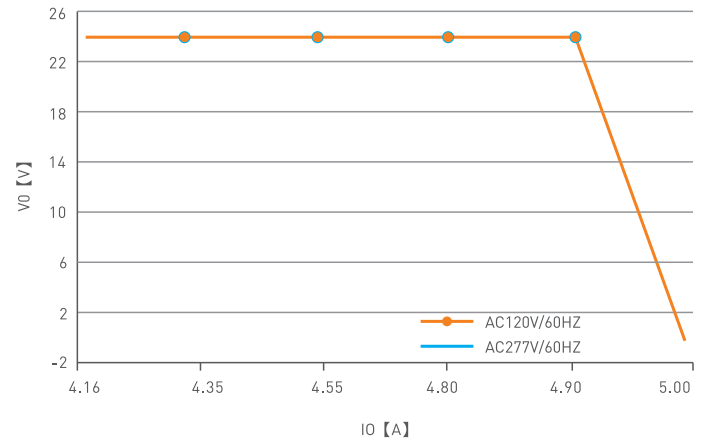
Power Factor Characteristic



THD VS Load



Over Load Diagram



Acolyte does not warrant or represent that the information is free from errors or omission. The information may change without notice and Acolyte is not in any way liable for the accuracy of any information printed and stored or in any way interpreted or used.

REV.30JAN2024