

4 ZONE SINGLE COLOR RF REMOTE

The AgiLight 4 Zone Single Color RF Remote is a remote dimmer controller which offers both switch and dimming functions. Designed with a touch color wheel, this remote offers smooth dimming without any flickering lights.

- 4 Zone
- 3 Scenes
- Control distance up to 100 feet (30 meters)
- Save 3 scenes for each zone

Applications:

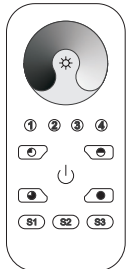
Commercial
Entertainment
Healthcare

Hospitality
Museums
Public Spaces

Residential
Retail



Dimensions



Width: 2.17 in (55 mm)
Length: 4.72 in (120 mm)
Depth: 0.67 in (17 mm)

ORDERING GUIDE

STANDARD

Category

RFREMOTESW4Z

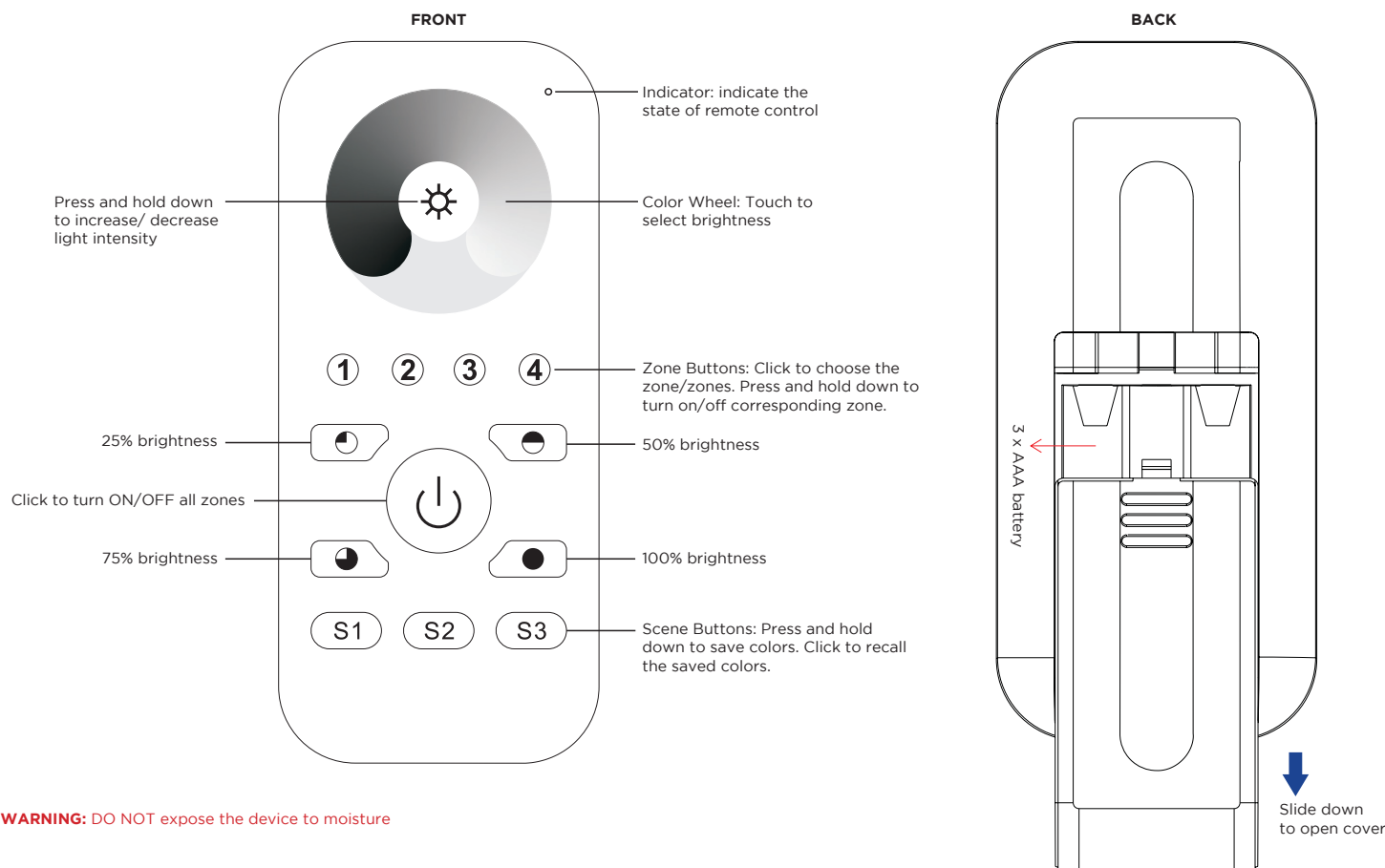
RFREMOTESW4Z - 4 Zone Single Color RF Remote

Note: This remote requires pairing with AgiLight 4 Channel RF Interface. Part number: RFINTERFACE4CH. Each remote can control endless 4 Channel RF Interfaces, while each Interface can be controlled by up to 8 different remotes.

AgiLight does not warrant or represent that the information is free from errors or omission. The information may change without notice and AgiLight is not in any way liable for the accuracy of any information printed and stored or in any way interpreted or used.

REV.11DEC2023

INSTRUCTIONS



WARNING: DO NOT expose the device to moisture

PAIRING WITH RF INTERFACE

Method 1

- Step 1: Wire the RF Interface by following the wiring diagram listed on RF Interface spec sheet (<https://www.genledbrands.com/agilight/product/4-channel-rf-interface>).
- Step 2: Click ON/OFF button on RF Remote to activate the remote.
- Step 3: Click the "Learning Key" button on the RF Interface to set it into pairing mode.
- Step 4: Choose and click a zone number on the RF Remote.
- Step 5: Touch the color wheel on the RF Remote. If the LED module(s) connected with the RF Interface flicker(s) once, it means the RF Interface is paired with selected zone successfully.

Method 2

- Step 1: Wire the RF Interface by following the wiring diagram listed on RF Interface spec sheet (<https://www.genledbrands.com/agilight/product/4-channel-rf-interface>).
- Step 2: Click ON/OFF button on RF Remote to activate the remote.
- Step 3: Power off and power on the RF Interface.
- Step 4: Choose and click twice on a zone number on the remote (e.g. zone 4), then press and hold it down. If the LED module(s) connected with the RF Interface flicker(s) once within 10 seconds, it means the RF Interface is paired with selected zone successfully.

SAVING COLOR/SCENE/MODE

- Step 1: Click ON/OFF button on RF Remote to activate the remote.
- Step 2: Choose and click one or multiple paired zone numbers (e.g. zone 4).
- Step 3: Touch the color wheel to select the desired scene.
- Step 4: Press and hold any scene button (S1, S2, S3) on the remote. If the LED module(s) connected with the RF receiver flicker(s) once, it means the color/scene was saved successfully.

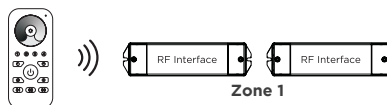
TO RECALL SAVED COLOR/SCENES

- Step 1: Click ON/OFF button on RF Remote to activate the remote.
- Step 2: Choose and click one or multiple paired zone numbers.
- Step 3: Press any scene button (S1, S2, S3) on the remote to recall the saved scene.

IF USING MULTIPLE RF INTERFACES

Option 1

Set all RF Interfaces in the same zone



Option 2

Set each RF Interface in a different zone

