



Date \_\_\_\_\_ Project \_\_\_\_\_

Notes \_\_\_\_\_

## 94W ATHENA WIRELESS COMPATIBLE 1 CHANNEL DRIVER

This UL Listed constant voltage Class 2 intelligent LED driver provides high efficiency and great heat dissipation with dimmable 24V output. Offering wireless compatibility with the Lutron Athena control system, it features an enclosure with isolated wire connections. With 120-277 VAC input voltage, this dimmable driver is suitable for LED lighting in commercial, industrial and residential applications.

- Constant voltage dimmable driver
- Lutron Athena Wireless compatibility
- High efficiency and high power factor
- Short circuit and constant power protection
- Overtemperature and overload protection
- Lightning surge protection
- Lumen output compensation
- Dimming range from 100% to 1%
- 6-year warranty



NOTE: Lutron specifies that Athena Wireless Nodes should be installed within 25 ft (7.62 m) of two or more Athena Wireless Nodes. Walls, ceilings and some signals may interfere with Athena and reduce this distance.



RoHS

SELV

## SPECIFICATIONS

Driver Type	Constant Voltage	Dimming Output Type	PWM
Rated Input Voltage Range	120-277 VAC	Ambient Operating Temperature	-40 — 122 °F (-40 — 50 °C)
Input Frequency	47-63 Hz	Storage Temperature	-40 — 185 °F (-40 — 85 °C)
Input Current	0.97A @ 120 VAC	Max Relative Humidity	95% RH
THD	< 10%	Overvoltage Protection	Yes
Power Factor	PF ≥ 0.98 / 120 V	Short Circuit Protection	Yes
Output Power	94 W	Over Temperature Protection	Yes
Output Voltage	24 V (24-26 V)	UL Standards	UL 8750
Output Current	4.0 A	EMI Compliance	FCC Part 15 CLASS B
Efficiency @ Full Load	> 91% @ 277 VAC	Warranty	6 years
Dimming Control	DALI		
Dimming Range	100%-1%		

## ORDERING GUIDE

Category	Voltage	Wattage	Compatibility
DRVW	24	94	ATH1CH
DRVW - Driver	24 - 24 VDC Output	94 - 94 W	ATH1CH - Lutron Athena Wireless Compatible 1 Channel

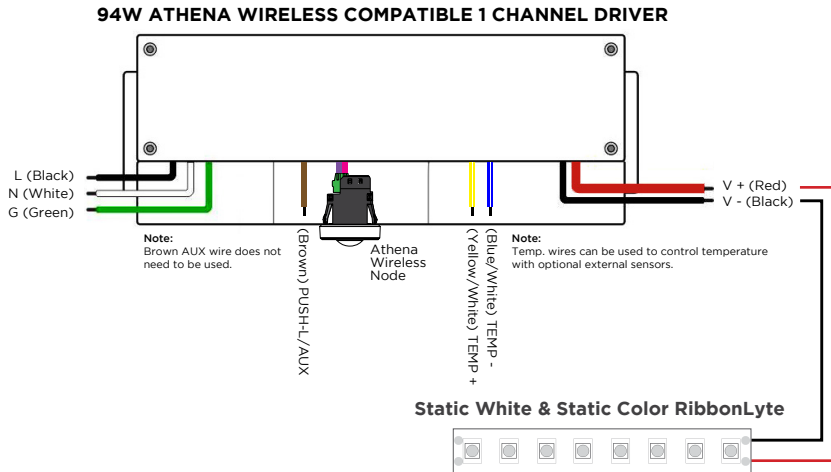
### MAXIMUM DISTANCE FROM DRIVER TO LED AT FULL LOAD

94 W

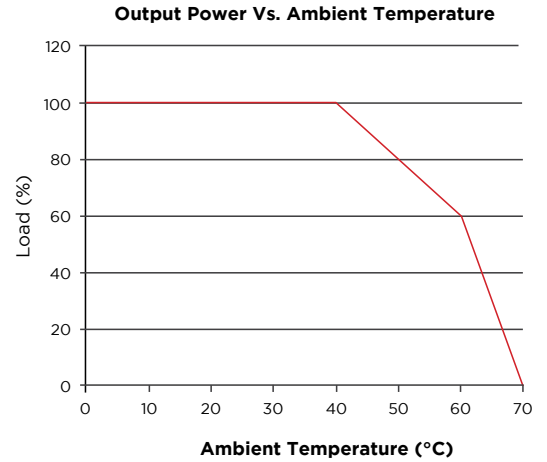
Wire Gauge	Feet	Meters
24 AWG / 0.25 mm <sup>2</sup>	5.5	1.68
22 AWG / 0.34 mm <sup>2</sup>	9	2.74
20 AWG / 0.5 mm <sup>2</sup>	14	4.27
18 AWG / 0.75 mm <sup>2</sup>	23	7.01
16 AWG / 15 mm <sup>2</sup>	37	11.28
14 AWG / 2.5 mm <sup>2</sup>	59	17.99
12 AWG / 4 mm <sup>2</sup>	94	28.66
10 AWG / 6 mm <sup>2</sup>	150	45.73
8 AWG / 10 mm <sup>2</sup>	239	72.87

Acolyte does not warrant or represent that the information is free from errors or omission. The information may change without notice and Acolyte is not in any way liable for the accuracy of any information printed and stored or in any way interpreted or used.

## WIRING DIAGRAM



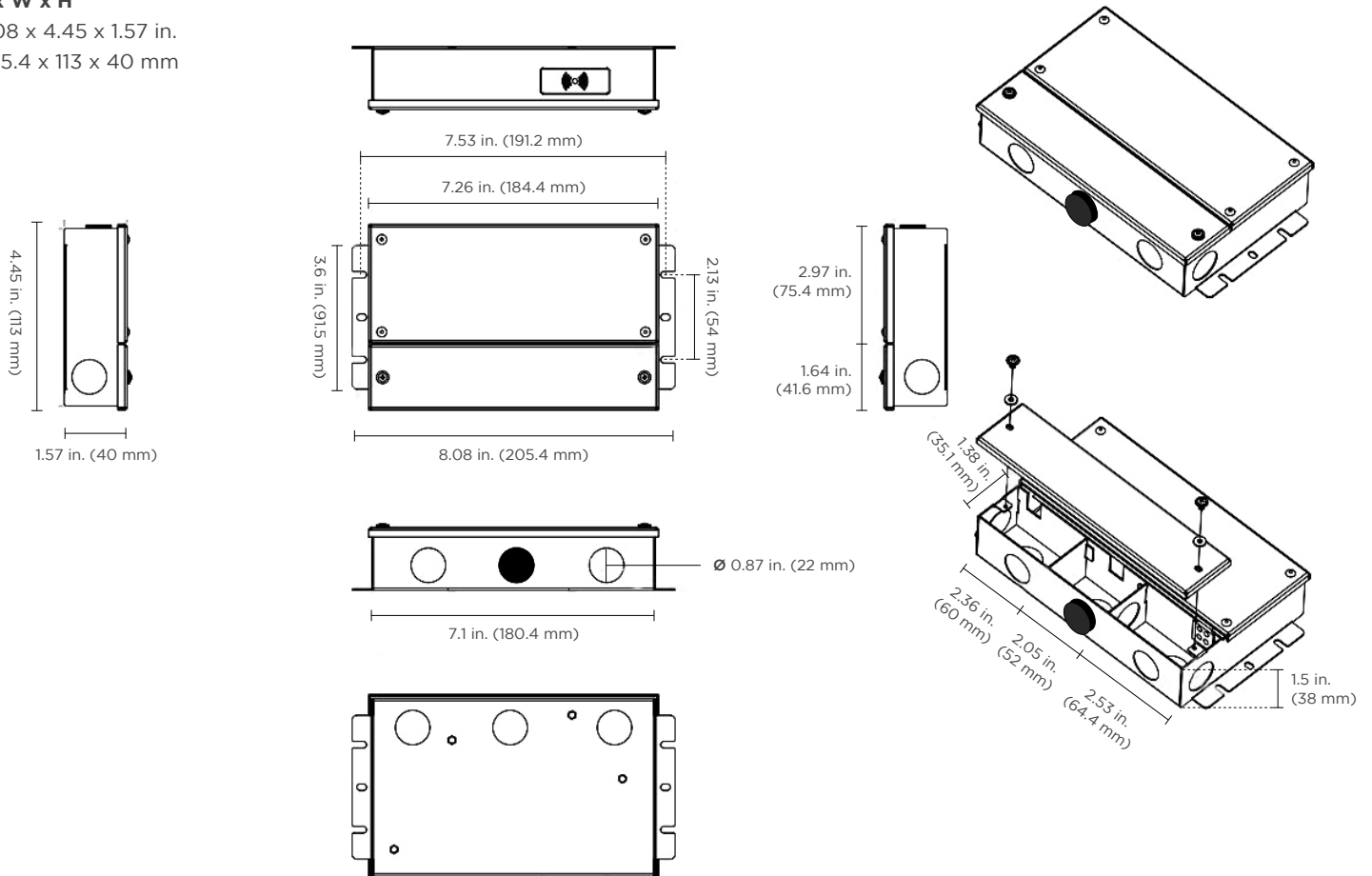
## DERATING CURVE



## DIMENSIONS

### L x W x H

8.08 x 4.45 x 1.57 in.  
205.4 x 113 x 40 mm



## ACTIVATING DALI BUS POWER

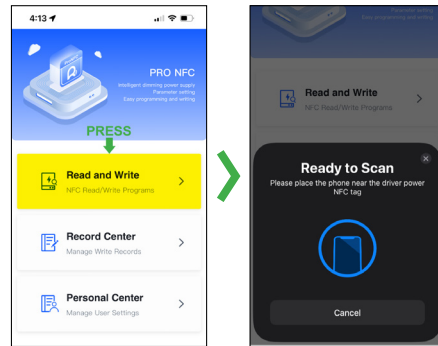
### NOTE:

The maximum number of drivers that can be connected to the same DALI bus circuit is four (4). The amperage in each driver with DALI bus power turned on is 56 mA, while the maximum current on which the DALI bus circuit can operate is 250 mA. DO NOT connect five (5) or more drivers with DALI bus power turned on.

This procedure can be done with any iPhone or Android device.

1. Download the **ProNFC** app from the applicable App Store or Google Play Store.
2. Open the App and press the '**Read and Write**' button on the home page. A "**Ready to Scan**" message should appear on the screen.

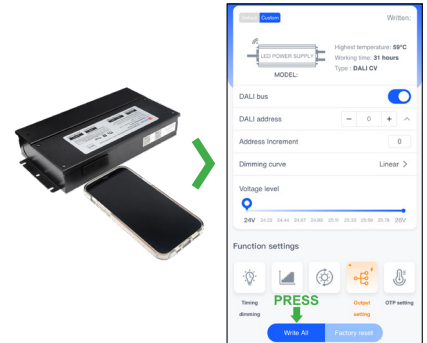
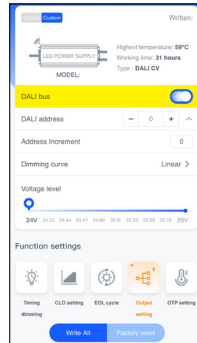
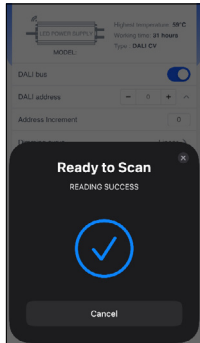
3. Connect the App to the driver by holding the top of the phone (the camera end) to the NFC tag on the driver.



4. A "Reading Success" message with a check mark should pop up, confirming the App and the driver have connected.

5. The App should then show the "Writing Drivers" page. Press the "**Output setting**" tab at the bottom of the screen. In the "DALI bus" row, toggle **DALI bus power ON**. (The slider should move from left to right and change color from gray to blue.)

6. Hold the top of the phone to the driver and press the "**Write All**" button.



REV.11SEP2025

### GLOBAL HQ

320 Murray Hill Pkwy  
East Rutherford, NJ 07073  
U.S.  
T: (+1) 212 629 6830  
E: Sales-US@GENLEDBrands.com

### EUROPEAN HQ

Hogeweyselaan 119  
1382 JK Weesp  
Netherlands  
T: (+31) 346 235 000  
E: SalesEurope@GENLEDBrands.com

### MEINA HQ

PO Box 371378, #823, Building 4EA  
Dubai Airport Free Zone  
Dubai, UAE  
T: (+971) 4 701 7901  
E: SalesMEINA@genlebrands.com

### ASIA-PACIFIC HQ

Room 402, Building D  
Shenxi Tongchuang Science and Technology Park  
No. 16 Hongyin Road  
Xingqiang Community, Xihu Street  
Guangming District, Shenzhen, China 518107  
T: (+86) 755 8529 0710  
E: Sales-Pacific@GENLEDBrands.com