

96W DIMMABLE DALI-2 DT6 D4I 1 CHANNEL DRIVER

This UL Listed constant voltage Class 2 intelligent LED driver provides high efficiency and great heat dissipation with dimmable 24 V output. It features an enclosure with isolated wire connections and a NEMA 4x rating. With 120-277 VAC input voltage, it is suitable for commercial, industrial and residential applications.



- DALI-2 Type 6
- Constant voltage dimmable driver
- High efficiency and high power factor
- Short circuit and constant power protection
- Overtemperature and overload protection
- Lightning surge protection
- Lumen output compensation
- IP67, NEMA 4x and UL wet location
- 6-year warranty



SPECIFICATIONS

Driver Type	Constant Voltage	Dimming Output Type	PWM
Rated Input Voltage Range	120-277 VAC	Dimming Input Type	DALI-2 DT6 D4I
Input Frequency	47-63 Hz	Ambient Operating Temperature	-40 – 122 °F (-40 – 50 °C)
Input Current	0.97 A @ 120 VAC	Storage Temperature	-40 – 185 °F (-40 – 85 °C)
THD	< 10%	Max Relative Humidity	95% RH
Power Factor	PF ≥ 0.98 / 120 V	Overvoltage Protection	Yes
Output Power	96 W	Short Circuit Protection	Yes
Output Voltage	24 V (24-26 V)	Over Temperature Protection	Yes
Output Current	4.0 A	UL Standards	UL 8750
Efficiency @ Full Load	> 91% @ 277 VAC	Environmental Rating	UL wet location and NEMA 4x rated
		EMI Compliance	FCC Part 15 CLASS B
		Warranty	6 years

ORDERING GUIDE

Category	Voltage	Wattage	Dimming Option	Number of Channels
DRVW	24	96	DALI	1CH
DRVW - Waterproof Driver	24 - 24 VDC Output	96 - 96 W	DALI - DALI-2 DT6 D4I Dimmable	1CH - 1 Channel

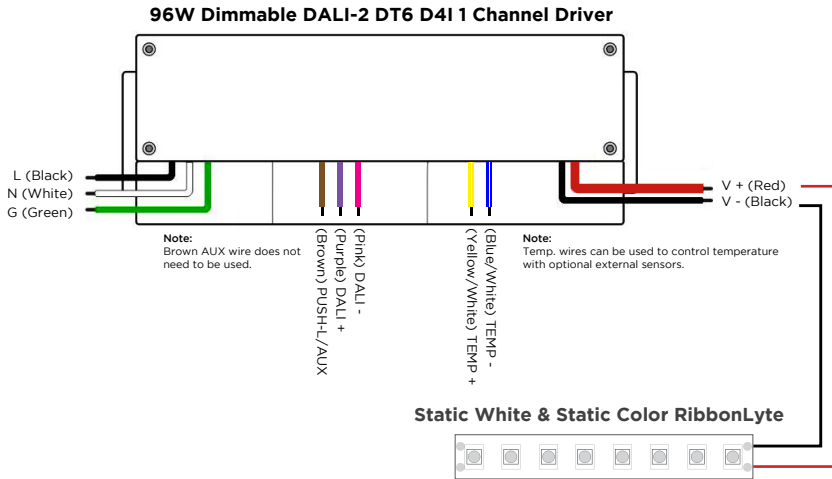
MAXIMUM DISTANCE FROM DRIVER TO LED AT FULL LOAD

96 W

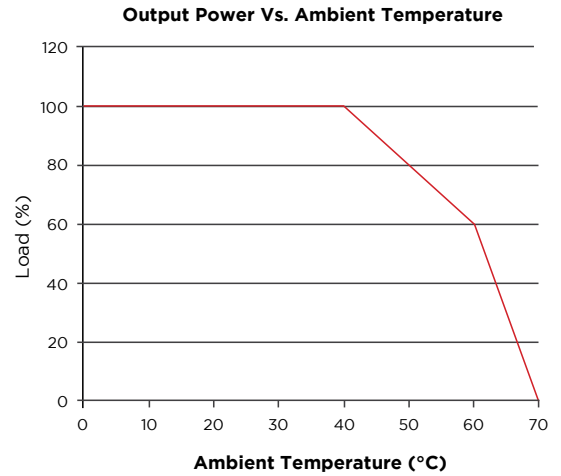
Wire Gauge	Feet	Meters
24 AWG / 0.25 mm ²	5.5	1.68
22 AWG / 0.34 mm ²	9	2.74
20 AWG / 0.5 mm ²	14	4.27
18 AWG / 0.75 mm ²	23	7.01
16 AWG / 15 mm ²	37	11.28
14 AWG / 2.5 mm ²	59	17.99
12 AWG / 4 mm ²	94	28.66
10 AWG / 6 mm ²	150	45.73
8 AWG / 10 mm ²	239	72.87

Acolyte does not warrant or represent that the information is free from errors or omission. The information may change without notice and Acolyte is not in any way liable for the accuracy of any information printed and stored or in any way interpreted or used.

WIRING DIAGRAM

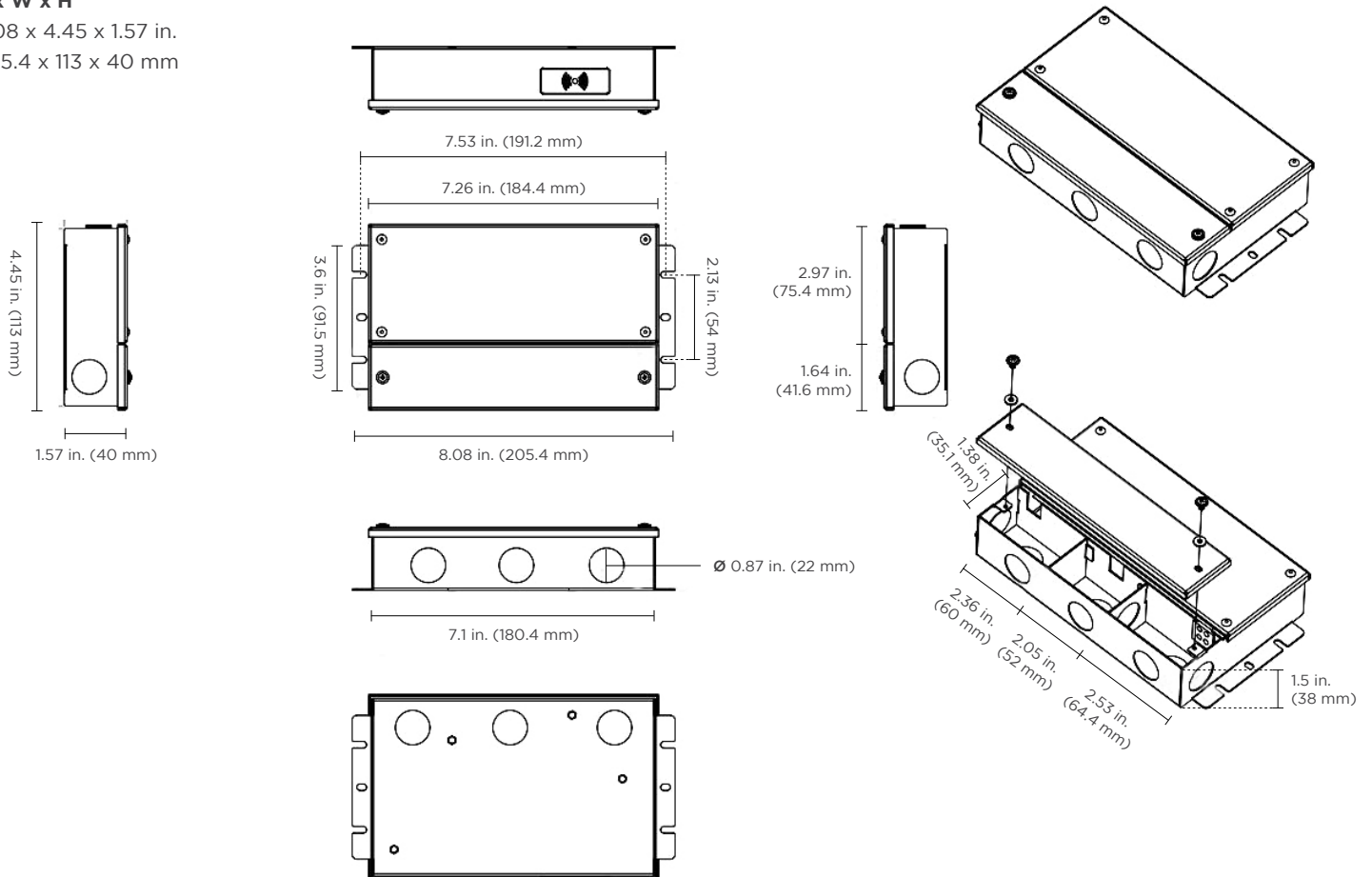


DERATING CURVE



DIMENSIONS

L x W x H
8.08 x 4.45 x 1.57 in.
205.4 x 113 x 40 mm



NOTE: To prevent exposure to the maximum allowable temperatures for these drivers, the suggested installation spacing between drivers is at least 4 in. (101.6 mm) side-to-side when the distance to the sidewall and top of the enclosure is 2 in. (50.8 mm). When the distance to the sidewall and top of the enclosure is 6 in. (152.4 mm), maintain at least 2 in. (50.8 mm) side-to-side spacing between drivers. Drivers should be placed at a minimum of 1 in. (25.4 mm) apart when arranging them end-to-end regardless of the enclosure size.

ACTIVATING DALI BUS POWER

NOTE:

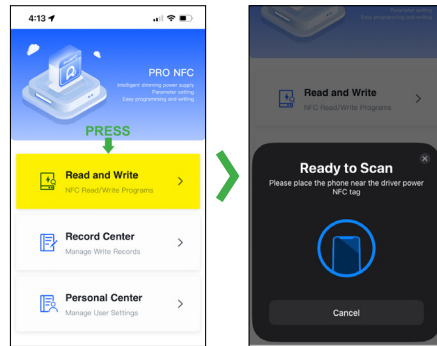
The maximum number of drivers that can be connected to the same DALI bus circuit is four (4). The amperage in each driver with DALI bus power turned on is 56 mA, while the maximum current on which the DALI bus circuit can operate is 250 mA. **DO NOT** connect five (5) or more drivers with DALI bus power turned on.

This procedure can be done with any iPhone or Android device.

1. Download the ProNFC app from the applicable App Store or Google Play Store.



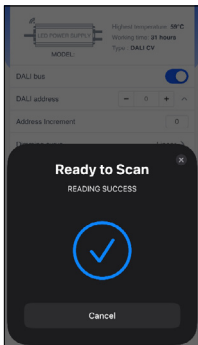
2. Open the App and press the 'Read and Write' button on the home page. A "Ready to Scan" message should appear on the screen.



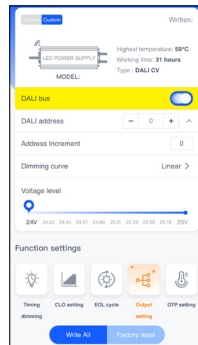
3. Connect the App to the driver by holding the top of the phone (the camera end) to the NFC tag on the driver.



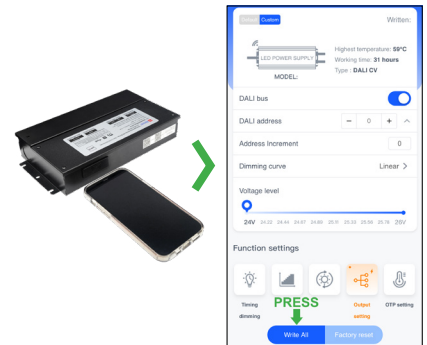
4. A "Reading Success" message with a check mark should pop up, confirming the App and the driver have connected.



5. The App should then show the "Writing Drivers" page. Press the "Output setting" tab at the bottom of the screen. In the "DALI bus" row, toggle DALI bus power ON. (The slider should move from left to right and change color from gray to blue.)



6. Hold the top of the phone to the driver and press the "Write All" button.



REV.22APR2026

GLOBAL HQ

320 Murray Hill Pkwy
East Rutherford, NJ 07073
U.S.
T: (+1) 212 629 6830
E: Sales-US@GENLEDBrands.com

EUROPEAN HQ

Hogeweyselaan 119
1382 JK Weesp
Netherlands
T: (+31) 346 235 000
E: SalesEurope@GENLEDBrands.com

MEINA HQ

PO Box 371378, #823, Building 4EA
Dubai Airport Free Zone
Dubai, UAE
T: (+971) 4 701 7901
E: SalesMEINA@genlebrands.com

ASIA-PACIFIC HQ

Room 402, Building D
ShenShi Tongchuang Science and Technology Park
No. 16 Hongyin Road
Xingqiang Community, Xinhui Street
Guangming District, Shenzhen, China 518107
T: (+86) 755 8529 0710
E: Sales-Pacific@GENLEDBrands.com