

Light efficiency:

78 Lumen/Watt

Light quality:

CRI: 95.8

Color temperature:

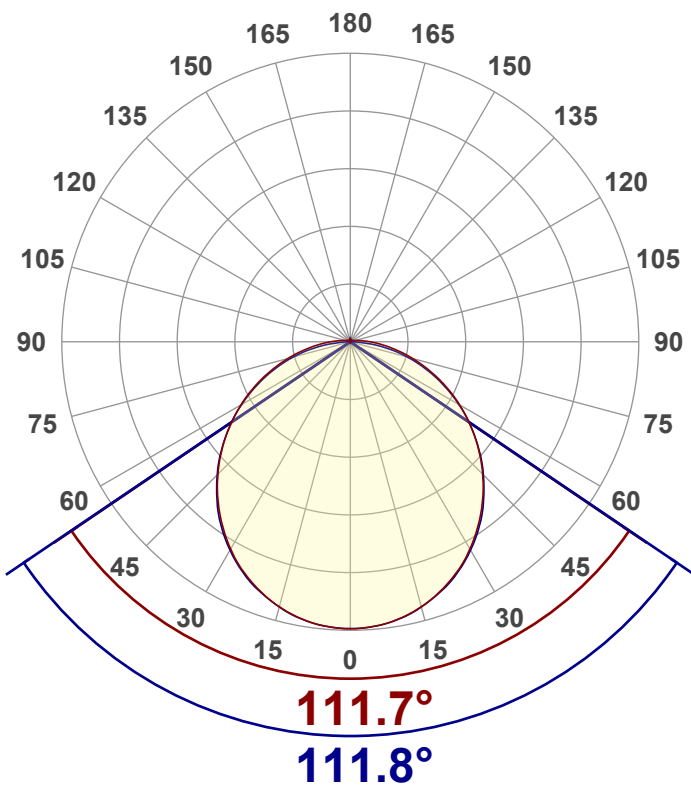
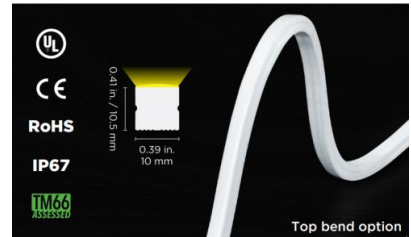
3030 K

Output: 329 lm

Peak: 110 cd

Power: 4.2 W

PF: 1.0



Tracking number: [n/a](#)

Product name:
NLAMT2.430E

Item number:

Date and time:
8/5/2025 2:37:31 PM

Operator:
MW

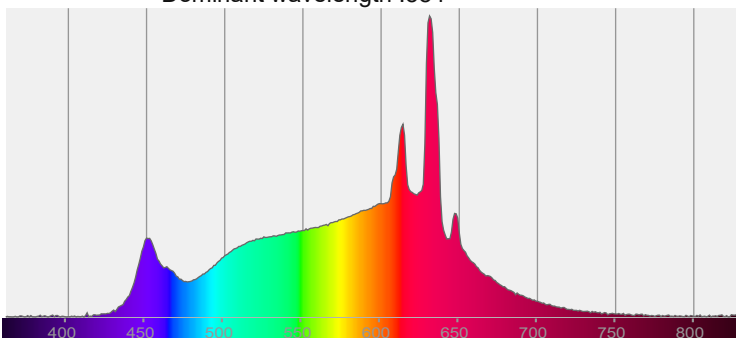
Description:
**color:white 3000K,
Power:8w/m,voltage:24V,length:0.5
m**



CIE 1931
x: 0.433
y: 0.400

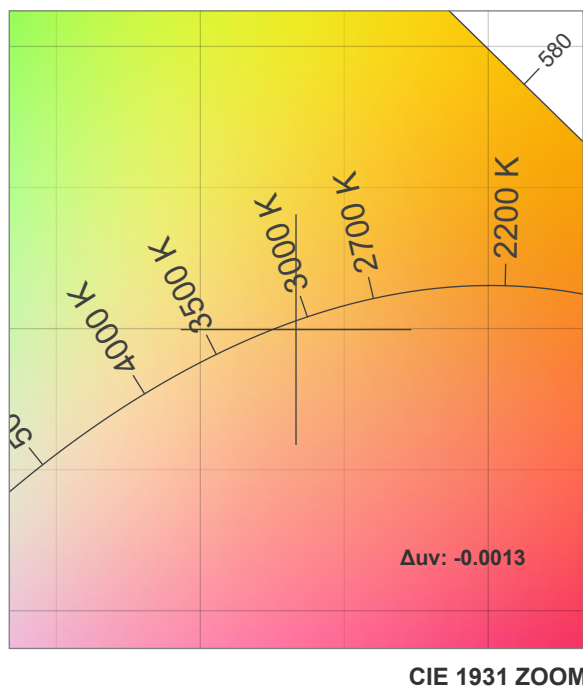
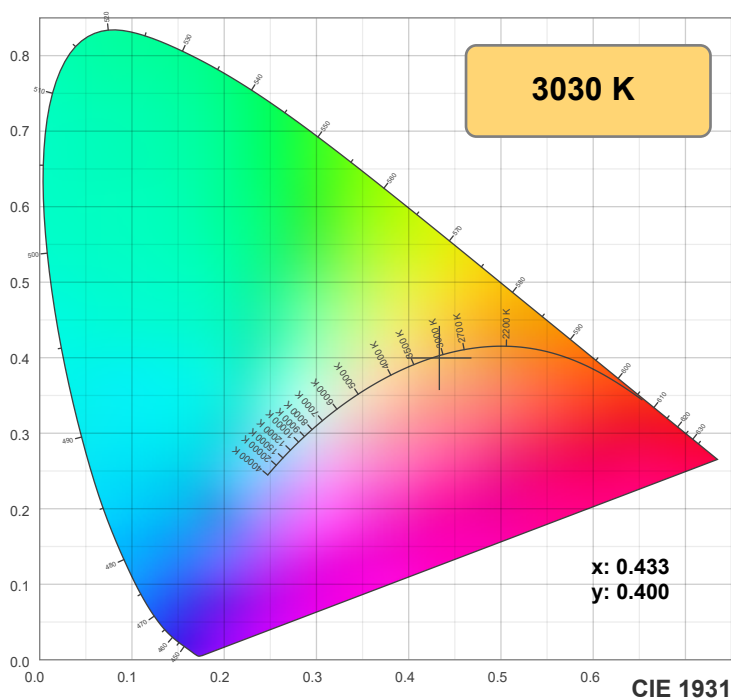
Spectra: Peak wavelength :631

Dominant wavelength :584

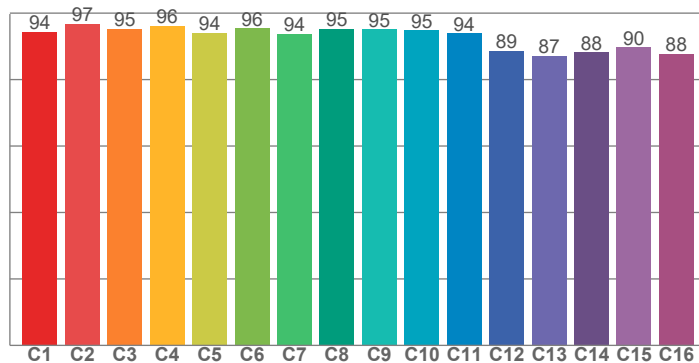


Power

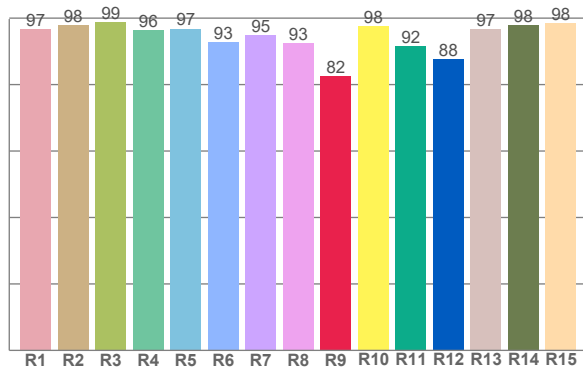
Voltage: 24.0 V
Current: 0.175 A
Frequency: 0 Hz



TM-30: 93.5



CRI: 95.8 (R1-R8)



CRI R values, only R1-R8 are used to calculate final CRI value

R1	R2	R3	R4	R5	R6	R7	R8	R9	R10	R11	R12	R13	R14	R15
96.7	97.9	98.8	96.3	96.8	92.8	94.8	92.5	82.5	97.5	91.6	87.7	96.7	97.8	98.4

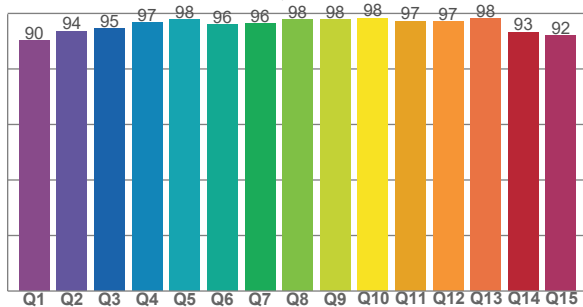
TM30 C values, 16 binned values out of total of 99 C values

C1	C2	C3	C4	C5	C6	C7	C8	C9	C10	C11	C12	C13	C14	C15	C16
94.4	96.8	95.3	96.2	94.1	95.5	93.8	95.3	95.1	94.7	93.9	88.6	87.1	88.2	89.7	87.7

CQS Q values

Q1	Q2	Q3	Q4	Q5	Q6	Q7	Q8	Q9	Q10	Q11	Q12	Q13	Q14	Q15
90.3	93.6	94.7	96.6	97.8	96.1	96.5	97.8	97.8	98.3	97.2	97.2	98.1	93.3	92.1

CQS: 94.9



Color parameters

Color temperature	Color rendering index	Red component	Color fidelity	Color gamut	Color quality scale	Color coordinate cie 1931	Color coordinate cie 1931	Color coordinate	Color coordinate	Color deviation from black body
CCT	CRI	CRI R9	TM30 Rf	TM30 Rg	CQS	x	y	u	v	Δuv
3030 K	95.8	82.5	93.5	100.7	94.9	0.433	0.400	0.250	0.346	-0.0013

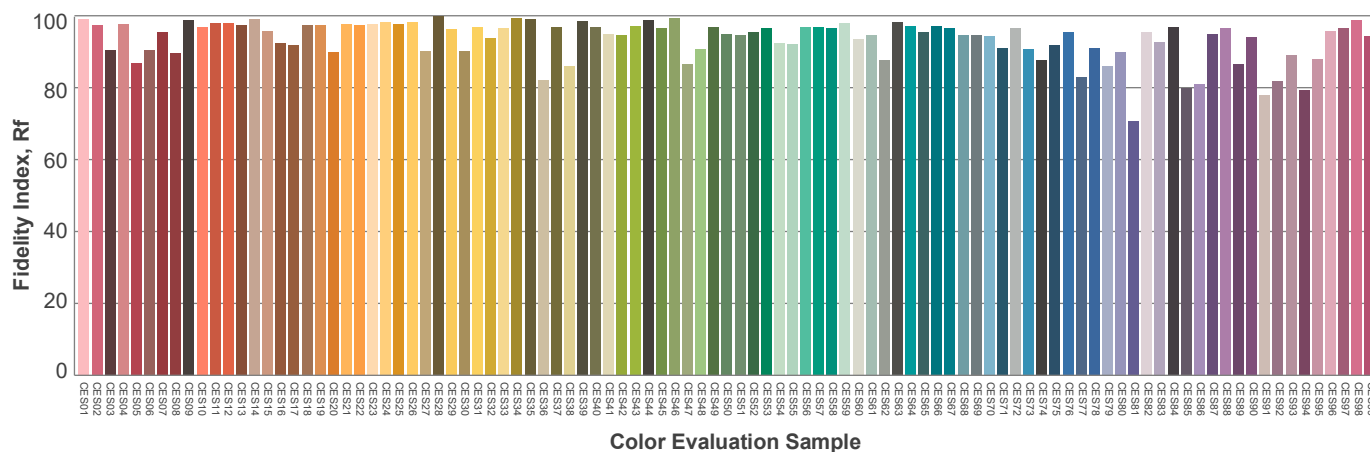
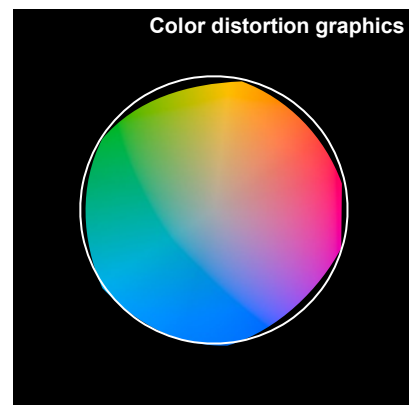
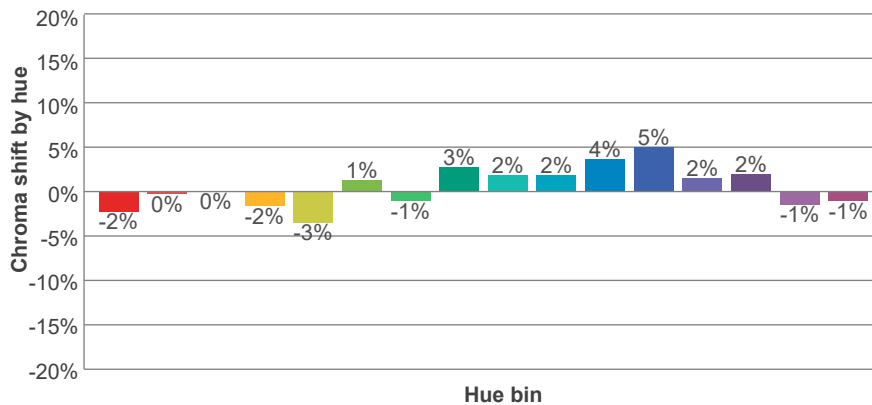
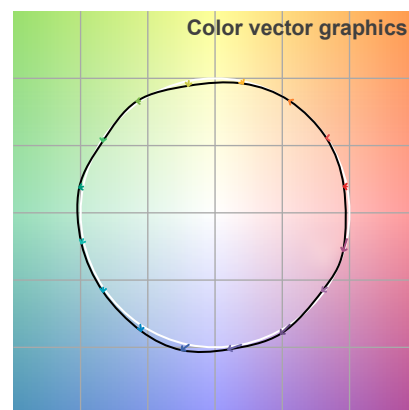
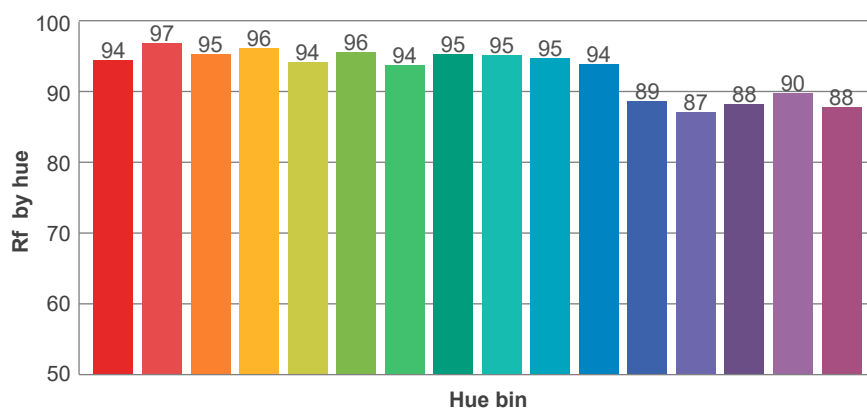
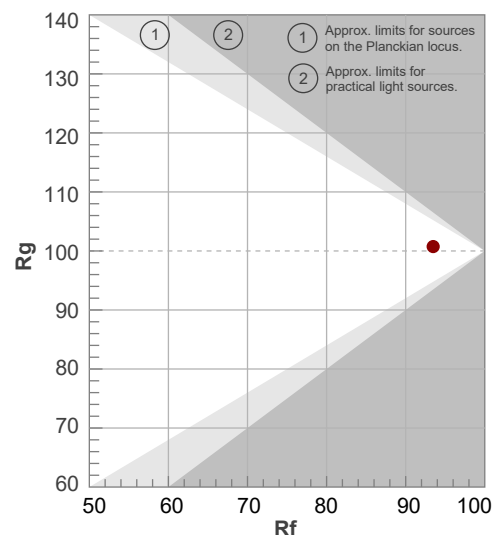
Rf 93.5

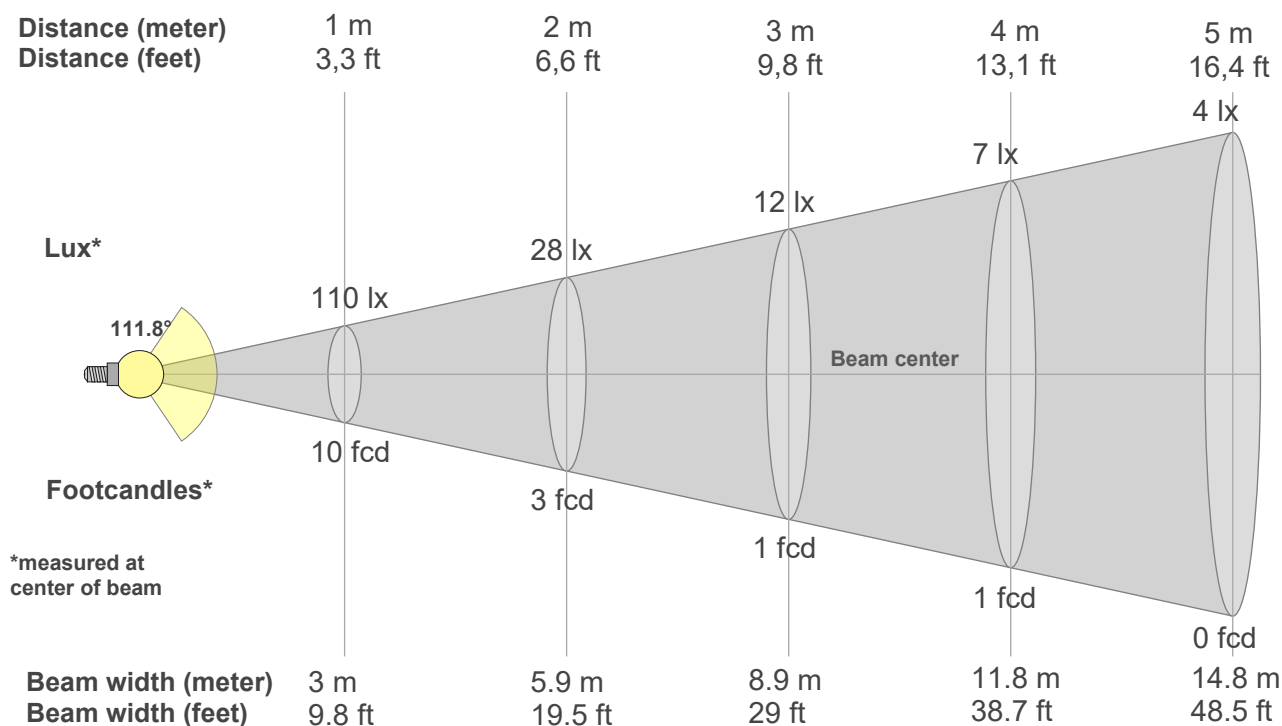
Fidelity index Rf

Rg 100.7

Gamut index Rg

Hue Bin	R _f	Shifts (%)	
		Chroma	Hue
1	94	-2%	1%
2	97	0%	0%
3	95	0%	0%
4	96	-2%	-2%
5	94	-3%	1%
6	96	1%	2%
7	94	-1%	2%
8	95	3%	1%
9	95	2%	3%
10	95	2%	2%
11	94	4%	3%
12	89	5%	-4%
13	87	2%	-10%
14	88	2%	-9%
15	90	-1%	-4%
16	88	-1%	-9%





Beam intensities from 1-20m

1m	2m	3m	4m	5m	6m	7m	8m	9m	10m	11m	12m	13m	14m	15m	16m	17m	18m	19m	20m
3.3ft	6.6ft	9.8ft	13.1ft	16.4ft	19.7ft	23ft	26.2ft	29.5ft	32.8ft	36.1ft	39.4ft	42.7ft	45.9ft	49.2ft	52.5ft	55.8ft	59.1ft	62.3ft	65.6ft
110lx	28lx	12lx	7lx	4lx	3lx	2lx	2lx	1lx	1lx	1lx	1lx	1lx	1lx	0lx	0lx	0lx	0lx	0lx	0lx
10.3fcd	2.6fcd	1.1fcd	0.6fcd	0.4fcd	0.3fcd	0.2fcd	0.2fcd	0.1fcd	0.1fcd	0.1fcd	0.1fcd	0.1fcd	0.1fcd	0fcd	0fcd	0fcd	0fcd	0fcd	0fcd

Intensities in 0° c-plane

0°	5°	10°	15°	20°	25°	30°	35°	40°	45°	50°	55°	60°	65°	70°	75°	80°	85°	90°	95°
110	110	108	106	102	97	92	86	79	72	65	57	49	41	33	25	18	12	8	5
100%	100%	98%	96%	92%	88%	83%	78%	72%	65%	58%	51%	44%	37%	29%	23%	16%	11%	7%	4%

Intensities in 90° c-plane

0°	5°	10°	15°	20°	25°	30°	35°	40°	45°	50°	55°	60°	65°	70°	75°	80°	85°	90°	95°
110	110	108	106	102	98	93	87	80	72	65	57	48	40	31	23	14	7	2	0
100%	99%	98%	96%	93%	89%	84%	78%	72%	66%	59%	51%	44%	36%	28%	21%	13%	6%	1%	0%

Intensities in 180° c-plane

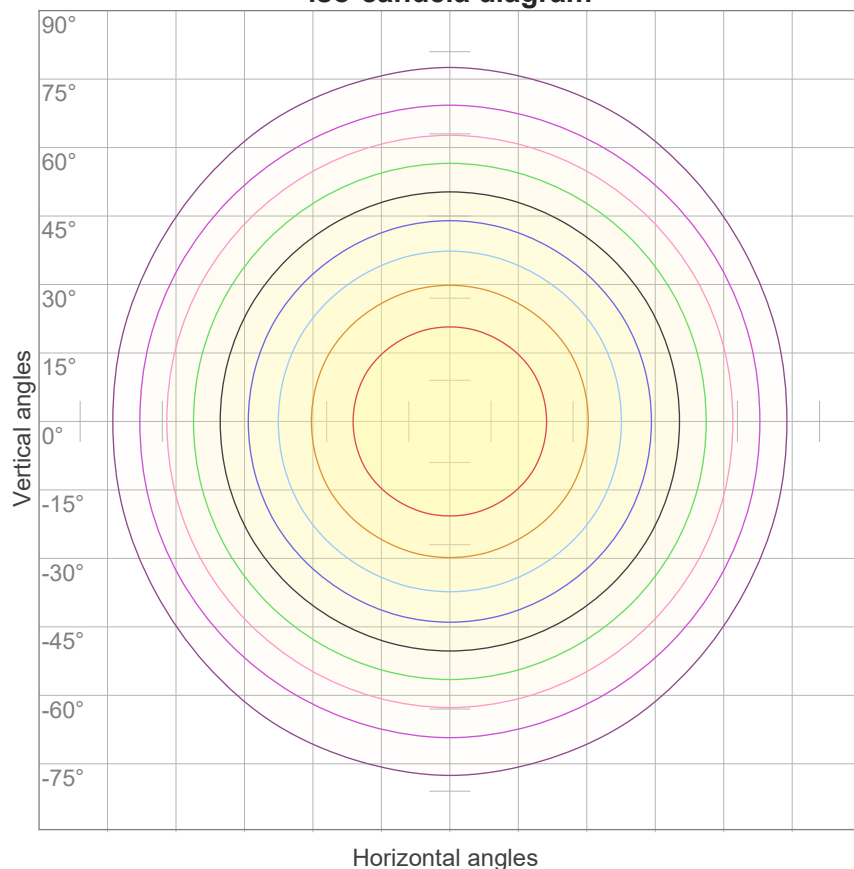
0°	5°	10°	15°	20°	25°	30°	35°	40°	45°	50°	55°	60°	65°	70°	75°	80°	85°	90°	95°
110	110	108	106	102	97	92	86	79	72	65	57	49	41	33	25	18	12	8	5
100%	100%	98%	96%	92%	88%	83%	78%	72%	65%	58%	51%	44%	37%	29%	23%	16%	11%	7%	4%

Intensities in 270° c-plane

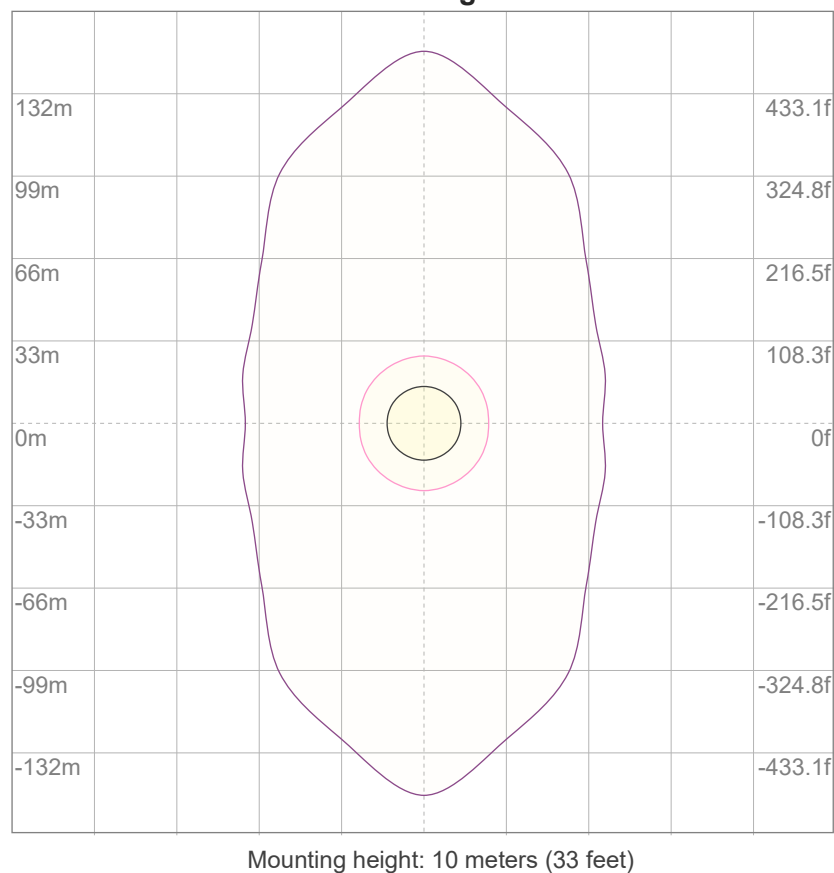
0°	5°	10°	15°	20°	25°	30°	35°	40°	45°	50°	55°	60°	65°	70°	75°	80°	85°	90°	95°
110	110	108	106	102	98	93	87	80	72	65	57	48	40	31	23	14	7	2	0
100%	99%	98%	96%	93%	89%	84%	78%	72%	66%	59%	51%	44%	36%	28%	21%	13%	6%	1%	0%

Beam angle 50%	Field angle 10%	Cutoff angle 2,5%	Intensity ratio in 120° cone	Intensity ratio in 90° cone
111.8°	168.1°	189.1°	74.8%	51.0%

iso-candela diagram



iso-lux diagram



Glare evaluation according to UGR

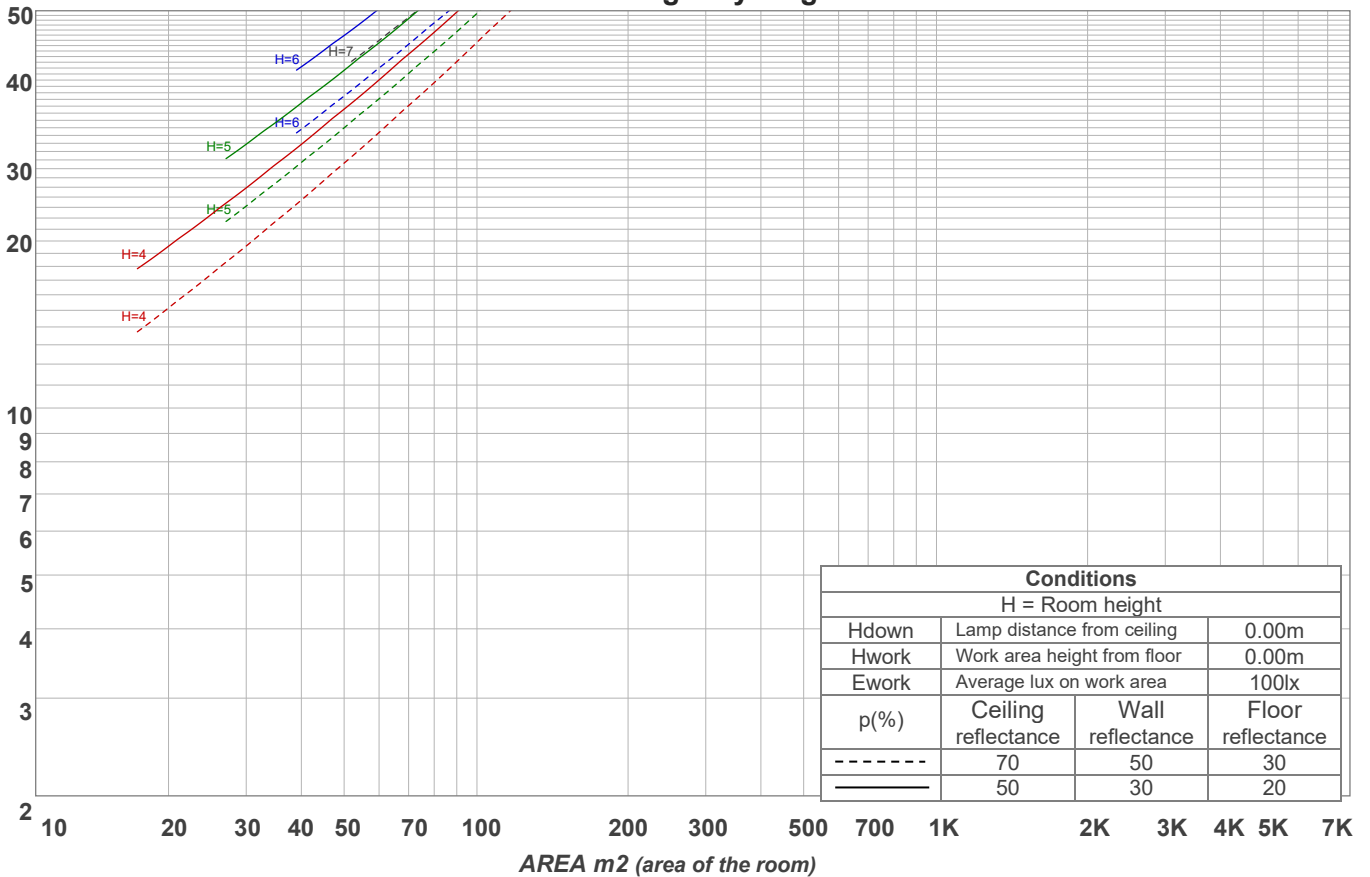
p Ceiling		70	70	50	50	30	70	70	50	50	30
p Walls		50	30	50	30	30	50	30	50	30	30
p Floor		20	20	20	20	20	20	20	20	20	20
Room size X Y		Viewing direction at right angles to lamp axis					Viewing direction parallel to lamp axis				
2H	2H	18.1	19.3	18.4	19.7	19.9	19.8	21.0	20.0	21.3	21.6
	3H	19.2	20.5	19.7	20.8	21.1	21.3	22.5	21.7	22.9	23.1
	4H	19.7	20.9	20.1	21.2	21.5	22.0	23.2	22.4	23.5	23.8
	6H	20.1	21.2	20.5	21.5	21.9	22.5	23.6	22.9	23.9	24.3
	8H	20.2	21.3	20.6	21.6	22.1	22.7	23.8	23.1	24.1	24.5
	12H	20.3	21.3	20.7	21.7	22.2	22.8	23.8	23.2	24.2	24.7
4H	2H	18.7	19.9	19.2	20.2	20.5	20.0	21.2	20.5	21.6	21.9
	3H	20.1	21.1	20.5	21.5	22.0	21.8	22.8	22.2	23.2	23.7
	4H	20.6	21.6	21.1	22.0	22.6	22.5	23.5	23.0	23.9	24.5
	6H	21.1	22.0	21.6	22.4	22.8	23.1	24.0	23.7	24.4	24.8
	8H	21.3	22.1	21.8	22.5	22.9	23.4	24.2	23.9	24.6	25.0
	12H	21.4	22.1	21.9	22.5	23.0	23.5	24.2	24.0	24.7	25.2
8H	4H	20.9	21.7	21.5	22.1	22.6	22.6	23.4	23.2	23.9	24.3
	6H	21.5	22.1	22.0	22.6	23.2	23.4	24.0	23.9	24.5	25.1
	8H	21.8	22.3	22.3	22.9	23.6	23.7	24.2	24.2	24.8	25.4
	12H	22.0	22.4	22.6	23.0	23.6	23.9	24.3	24.5	24.9	25.5
12H	4H	20.9	21.6	21.5	22.1	22.6	22.6	23.3	23.1	23.8	24.3
	6H	21.6	22.1	22.1	22.7	23.4	23.4	23.9	23.9	24.5	25.2
	8H	21.9	22.3	22.5	22.9	23.5	23.7	24.2	24.3	24.7	25.3
Variation of the observer position for the luminaire distance S											
S = 1.0H		0.1 / -0.2					0.1 / -0.1				
S = 1.5H		0.2 / -0.4					0.4 / -0.4				
S = 2.0H		0.5 / -0.7					0.9 / -0.9				
CIE 117-1995. Corrected glare indices referring to 329 lm total luminous flux											

Coefficients of Utilization

Ceiling reflectance	80				70				50			30			10			0
Wall reflectance	70	50	30	10	70	50	30	10	50	30	10	50	30	10	50	30	10	0
Floor reflectance	20	20	20	20	20	20	20	20	20	20	20	20	20	20	20	20	20	0
RCR	(RCR: Room Cavity Ratio) Room Values are expressed as percentage of Lumens delivered to the task surface																	
0	119	119	119	119	116	116	116	116	110	110	110	105	105	105	100	100	100	98
1	108	102	98	94	105	100	96	92	95	92	89	91	88	86	87	85	83	80
2	98	89	82	76	95	87	80	75	83	77	73	79	75	71	76	72	69	66
3	89	78	70	63	86	76	68	62	73	66	61	70	64	59	67	62	58	56
4	81	69	60	53	79	67	59	53	65	57	52	62	56	51	60	54	50	47
5	75	62	52	46	72	60	52	45	58	50	45	56	49	44	54	48	43	41
6	69	55	46	40	67	54	46	40	52	45	39	50	44	38	49	43	38	36
7	64	50	41	35	62	49	41	35	48	40	34	46	39	34	44	38	34	32
8	59	46	37	31	58	45	37	31	43	36	31	42	35	30	41	35	30	28
9	56	42	34	28	54	41	33	28	40	33	28	39	32	27	38	32	27	25
10	52	39	31	25	51	38	31	25	37	30	25	36	29	25	35	29	25	23

LAMPS (number of lamps)

Luminaire budgetary diagram



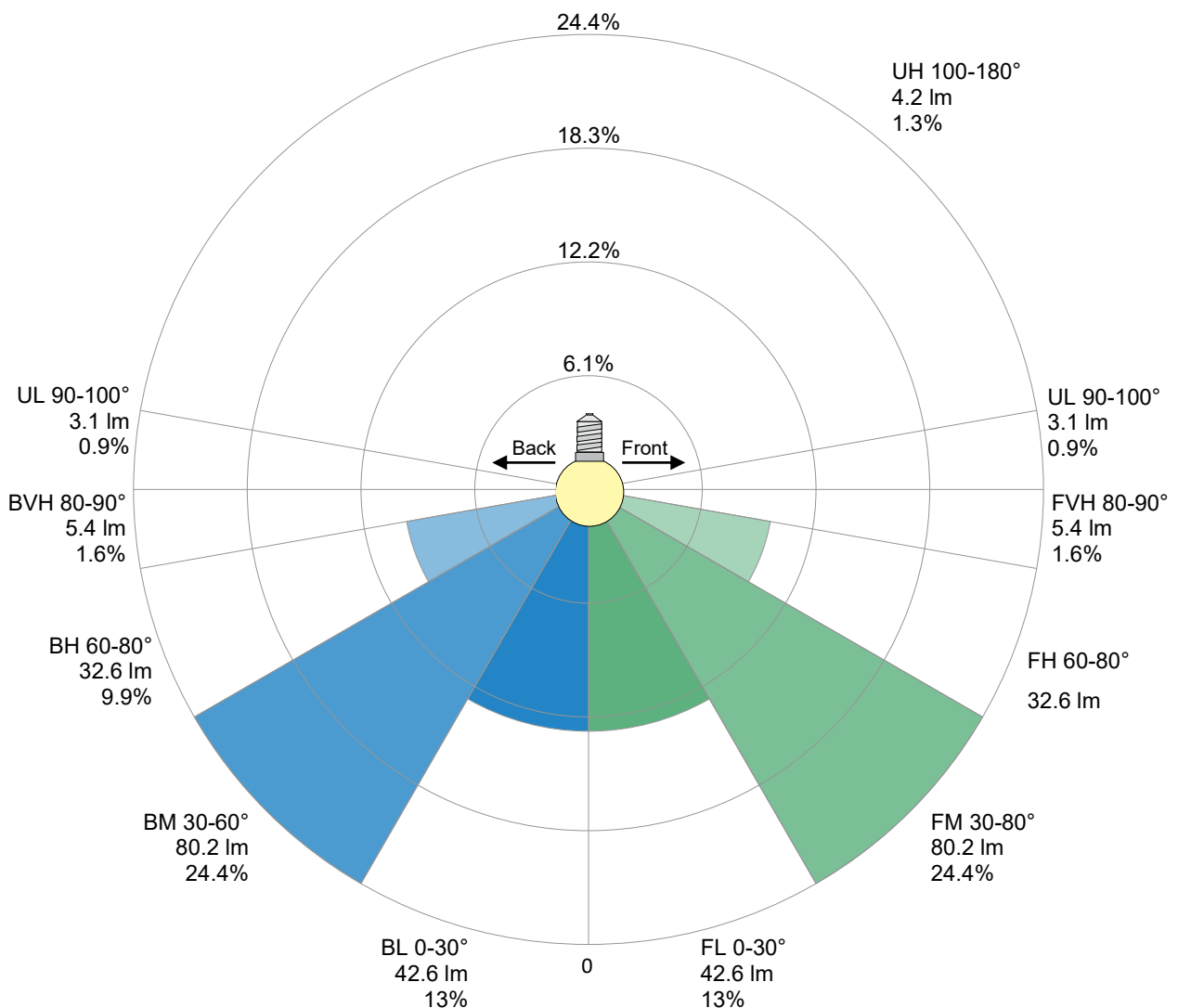
Zonal Lumen Summary

0°-10°	10°-20°	20°-30°	30°-40°	40°-50°	50°-60°	60°-70°	70°-80°	80°-90°
10.5 lm	29.9 lm	45.1 lm	54.1 lm	55.9 lm	50.7 lm	39.8 lm	25.3 lm	10.5 lm
90°-100°	100°-110°	110°-120°	120°-130°	130°-140°	140°-150°	150°-160°	160°-170°	170°-180°
2.95 lm	1.33 lm	0.906 lm	0.656 lm	0.504 lm	0.344 lm	0.240 lm	0.130 lm	0.048 lm

LCS table

BUG rating:	B0 U1 G0	
Forward light	Lumens	Lumens %
Low(0-30):	42.6	13%
Medium(30-60):	80.2	24.4%
High(60-80):	32.6	9.9%
Very high(80-90):	5.4	1.6%
Back light		
Low(0-30):	42.6	13%
Medium(30-60):	80.2	24.4%
High(60-80):	32.6	9.9%
Very high(80-90):	5.4	1.6%
Uplight		
Low(90-100):	3.1	0.9%
High(100-180):	4.2	1.3%

LCS graph



Flicker curve (complete sampled flicker signal)



Flicker frame (frame of one flicker period)



Flicker FFT (frequency scope of flicker curve)



Flicker results:

Flicker frequency:		n/a Hz	
Flicker index:	n/a	JA8/10 40Hz	n/a %
Flicker percentage:	n/a %	JA8/10 90Hz	n/a %
SVM: (Visual flicker)	n/a	JA8/10 200Hz	n/a %
PstLM	n/a	JA8/10 400Hz	n/a %
Mp	n/a	JA8/10 1000Hz	n/a %

Flicker conditions:

Sample rate:	n/a samples/second
--------------	--------------------