



ACOLYTE®
Architectural Lighting Solutions



NANO FLEX DUAL-BENDING WALL GRAZERS

The Nano Flex is a large 24V flexible silicone grazer tube. Available in three dimmable Static White CCTs (2700K-4000K), this IP67 grazer is compatible with 0-10V, ELV/MLV or DMX controls. Dual bending capabilities (side- and top-bending!) make this an amazing solution for complex grazer applications in hospitality, landscape or architectural settings. Choose from end, side or bottom power feed.



RoHS

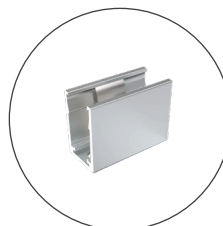
IP67

IK07

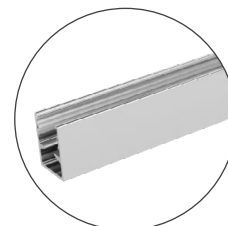
FEATURES:

- 7.6 W/ft (25 W/m)
- 800 lm/ft (2625 lm/m) at 4000K
- 3 Static White CCTs (2700K, 3000K, 4000K)
- 7 LEDs/ft (24 LEDs/m)
- 1.64 in. (41.67 mm) LED spacing
- 16 ft 4.85 in. (5 m) max. length (single feed)
- 5.9 in. (150 mm) minimum bending radius
- Beam angles: 10x10°, 15x15°, 20x20°, 25x25°, 30x30°, 40x40°, 50x50°, 25x50°, 45xAsymmetric 30°
- IP67 rating for dry, damp and wet locations
- IK07
- Available in white or black housing
- Use with mounting clip, mounting channel, curved mounting channel, tiltable stand

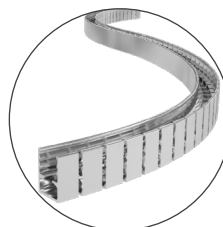
MOUNTING OPTIONS



Mounting Clip



Mounting Channel



Curved Mounting Channel



Tiltable Stand

COLOR TEMPERATURES

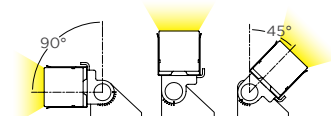


2700K 3000K 4000K

HOUSING COLORS

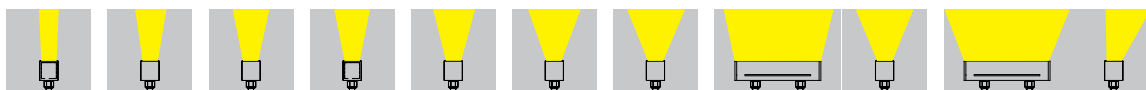


Black White



Tiltable 45° - 90°

BEAM ANGLES



10x10°

15x15°

20x20°

25x25°

30x30°

40x40°

50x50°

25x50°

45xAsymmetric 30°

REV. 26SEP2025