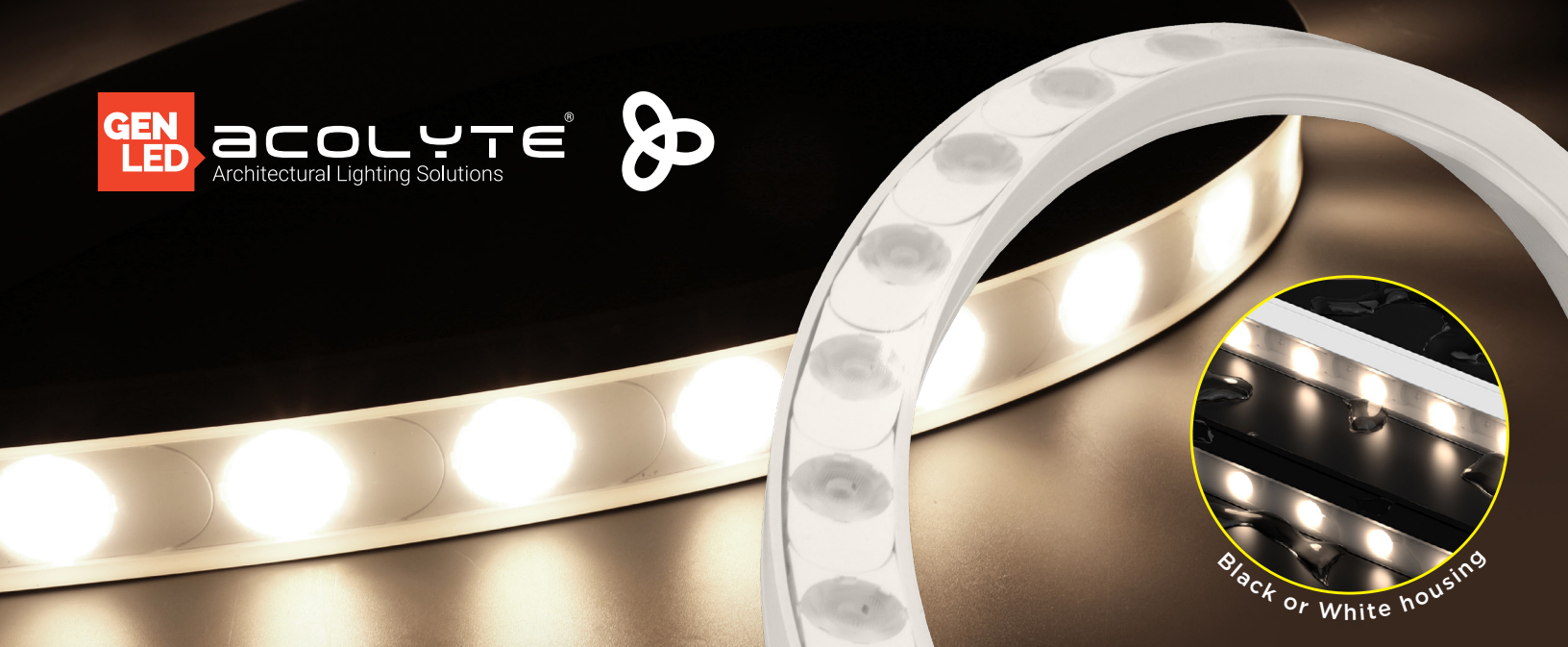




**ACOLYTE®**  
Architectural Lighting Solutions



# NANO FLEX DUAL-BENDING WALL GRAZERS

The Nano Flex is a large 24V flexible silicone grazer tube. Available in three dimmable Static White CCTs and nine beam angle options, this IP67 grazer is compatible with 0-10V, ELV/MLV and DMX controls. Or select our special pixel programmable Nano Flex model and use SPI controls to create unique patterns and light fading sequences. Dual bending capabilities (side- and top-bending!) make Nano Flex an amazing solution for complex grazer applications in hospitality, landscape and architectural settings. Choose from end, side or bottom power feed.



RoHS

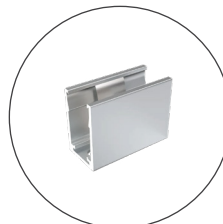
IP67

IK07

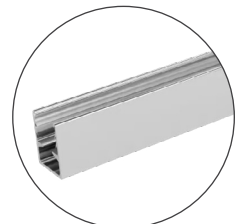
## FEATURES:

- 7.6 W/ft (25 W/m)
- 800 lm/ft (2625 lm/m) at 4000K
- 3 Static White CCTs (2700K, 3000K, 4000K)
- Use 0-10V, ELV/MLV, DMX or Casambi controls  
OR use SPI controls with our pixel models
- Programmable pixels (9.84 in. | 250 mm)
- 7 LEDs/ft (24 LEDs/m)
- 1.64 in. (41.67 mm) LED spacing
- 16 ft 4.85 in. (5 m) max. length (single feed)
- 5.9 in. (150 mm) minimum bending radius
- Beam angles: 10x10°, 15x15°, 20x20°, 25x25°, 30x30°, 40x40°, 50x50°, 25x50°, 45xAsymmetric 30°
- IP67 rating for dry, damp and wet locations
- IK07
- Available in black or white housing
- Use with mounting clip, mounting channel, curved mounting channel, tiltable stand

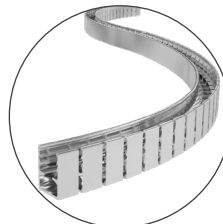
## MOUNTING OPTIONS



Mounting Clip



Mounting Channel

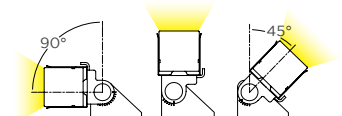


Curved Mounting Channel



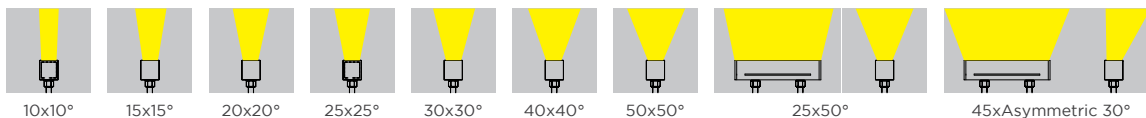
Tiltable Stand

## COLOR TEMPERATURES



Tiltable 45° - 90°

## BEAM ANGLES



## HOUSING COLORS



Black

White

REV. 28JAN2026