

Light efficiency:

86 Lumen/Watt

Light quality:

CRI: 56.7

Color temperature:

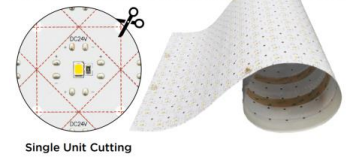
4674 K

Output: 4329 lm

Peak: 1427 cd

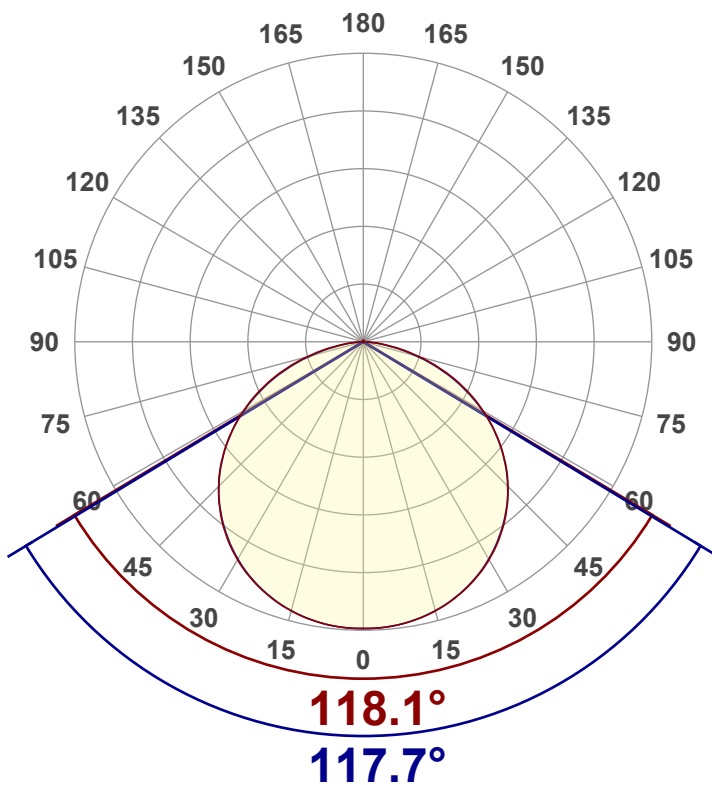
Power: 50.4 W

PF: 1.0



RoHS

IP20



Tracking number: [n/a](#)

Product name:  
**FBL242048RGBW-ALLON**

Item number:

Date and time:  
**11/14/2025 10:17:14 AM**

Operator:  
**BOB**

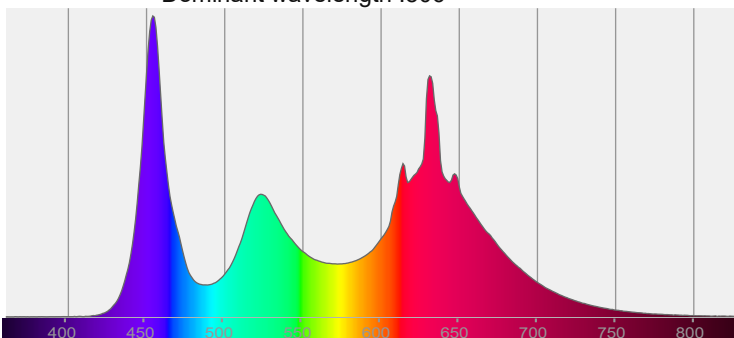
Description:  
**SIZE:609.6\*304.8MM  
RGBW ALLON**



CIE 1931  
x: 0.345  
y: 0.292

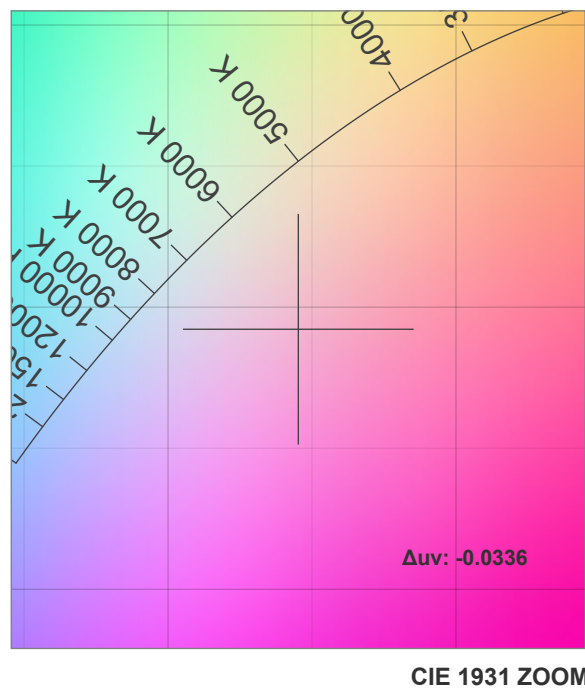
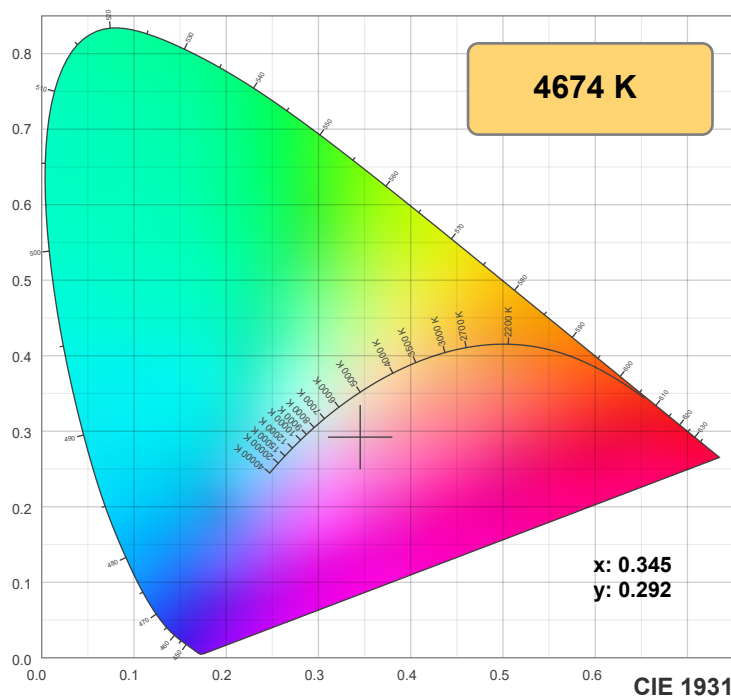
Spectra: Peak wavelength :454

Dominant wavelength :506



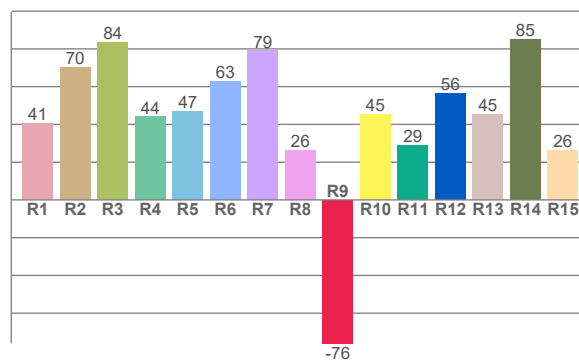
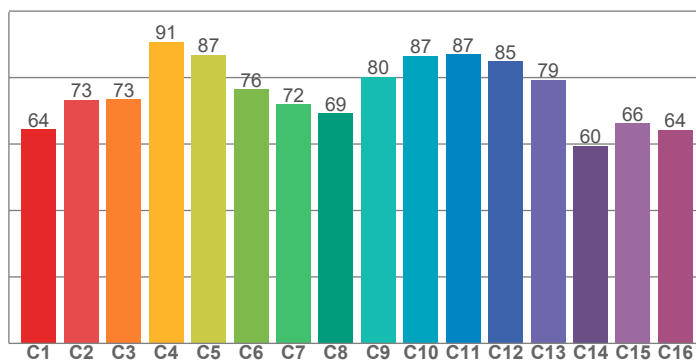
Power

Voltage: 24.0 V  
Current: 2.10 A  
Frequency: 0 Hz



TM-30: 77.5

CRI: 56.7 (R1-R8)



CRI R values, only R1-R8 are used to calculate final CRI value

R1	R2	R3	R4	R5	R6	R7	R8	R9	R10	R11	R12	R13	R14	R15
40.7	70.3	83.6	44.0	46.9	62.8	79.0	26.0	-76.0	45.3	28.8	56.3	45.4	85.3	26.4

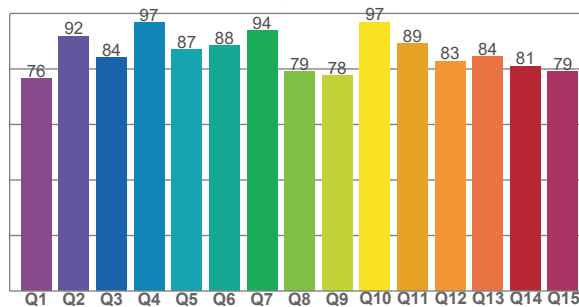
TM30 C values, 16 binned values out of total of 99 C values

C1	C2	C3	C4	C5	C6	C7	C8	C9	C10	C11	C12	C13	C14	C15	C16
64.5	73.3	73.4	90.8	86.8	76.4	71.9	69.3	80.2	86.6	87.0	84.9	79.4	59.5	66.2	64.3

CQS Q values

Q1	Q2	Q3	Q4	Q5	Q6	Q7	Q8	Q9	Q10	Q11	Q12	Q13	Q14	Q15
76.4	91.8	84.2	96.7	86.9	88.4	93.9	79.0	77.7	96.9	89.1	82.8	84.4	81.0	79.0

CQS: 84.4



## Color parameters

Color temperature	Color rendering index	Red component	Color fidelity	Color gamut	Color quality scale	Color coordinate cie 1931	Color coordinate cie 1931	Color coordinate	Color coordinate	Color deviation from black body
CCT	CRI	CRI R9	TM30 Rf	TM30 Rg	CQS	x	y	u	v	$\Delta uv$
4674 K	56.7	-76.0	77.5	122.1	84.4	0.345	0.292	0.237	0.301	-0.0336

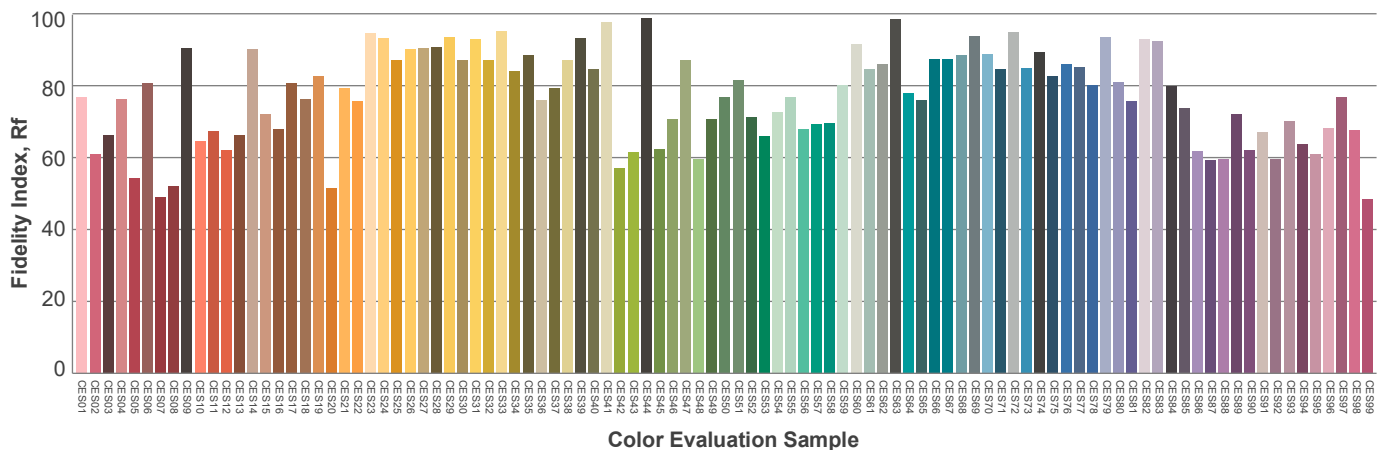
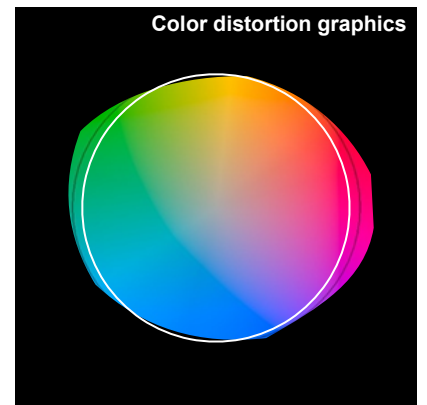
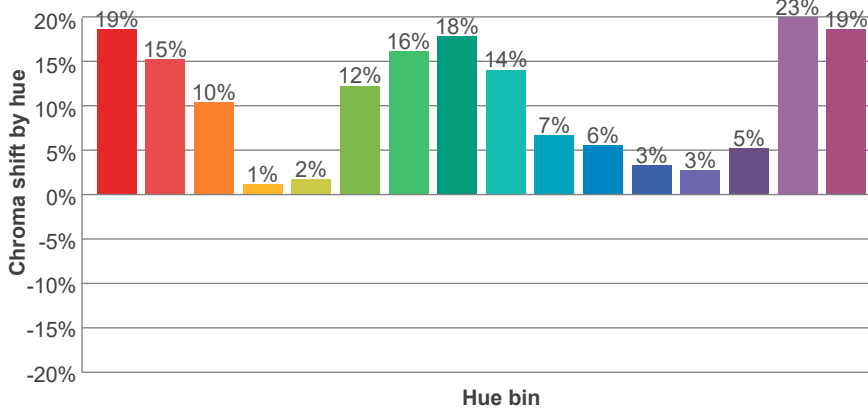
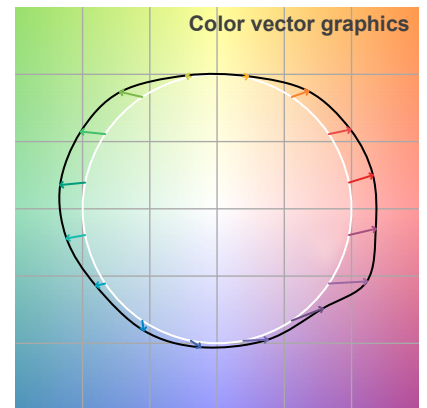
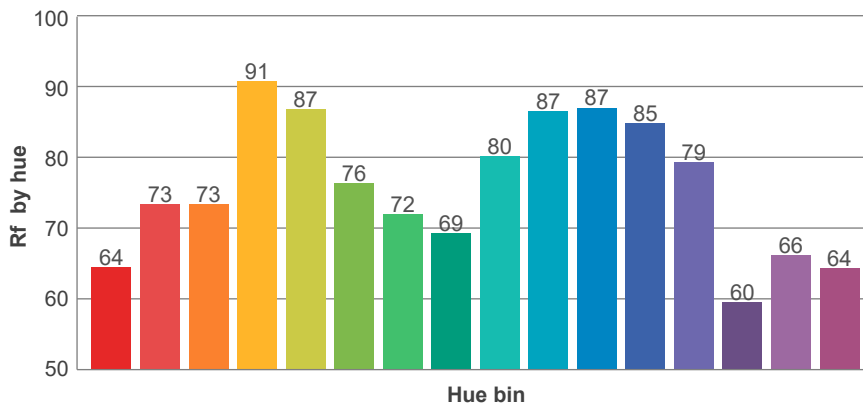
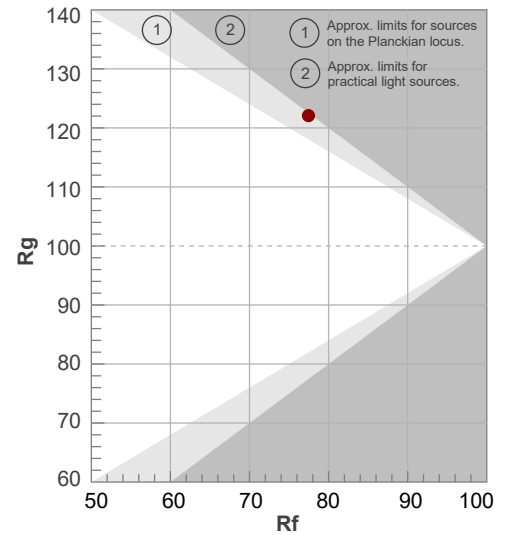
**Rf 77.5**

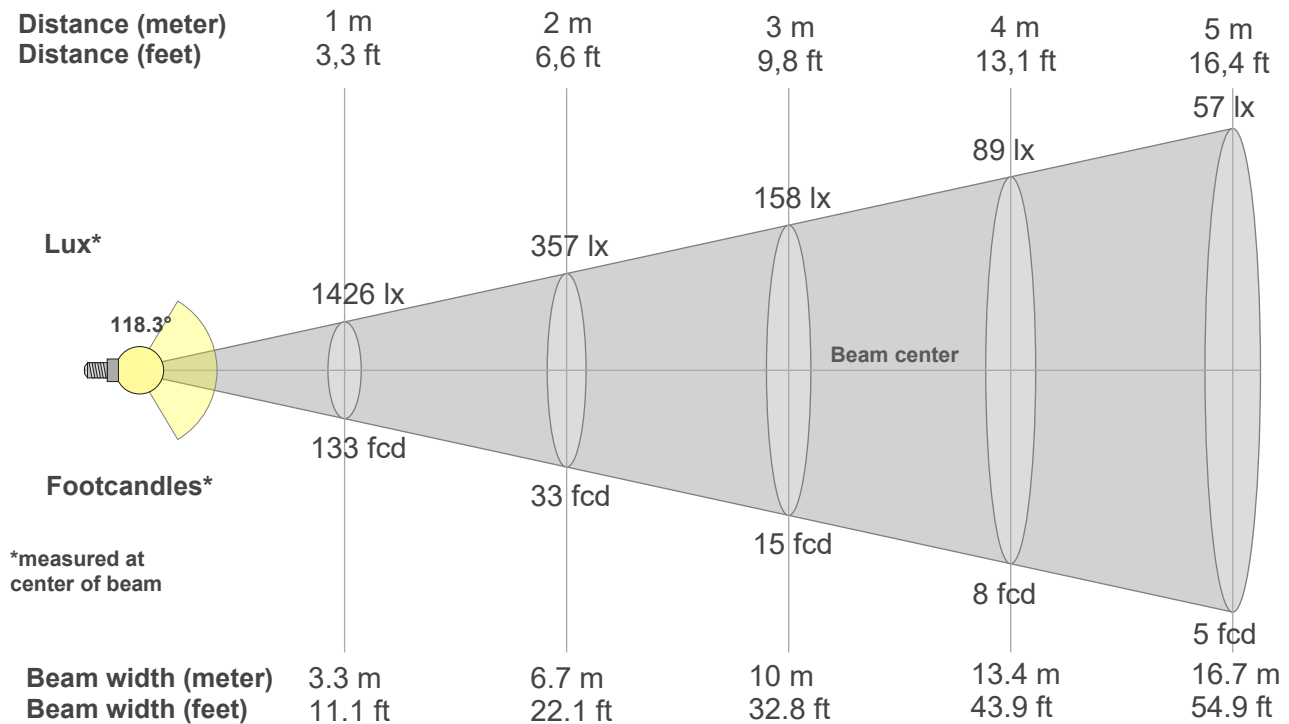
Fidelity index Rf

**Rg 122.1**

Gamut index Rg

Hue Bin	R <sub>f</sub>	Shifts (%)	
		Chroma	Hue
1	64	19%	2%
2	73	15%	-6%
3	73	10%	-8%
4	91	1%	-3%
5	87	2%	3%
6	76	12%	12%
7	72	16%	9%
8	69	18%	5%
9	80	14%	0%
10	87	7%	-2%
11	87	6%	5%
12	85	3%	8%
13	79	3%	18%
14	60	5%	24%
15	66	23%	17%
16	64	19%	8%





## Beam intensities from 1-20m

1m	2m	3m	4m	5m	6m	7m	8m	9m	10m	11m	12m	13m	14m	15m	16m	17m	18m	19m	20m
3.3ft	6.6ft	9.8ft	13.1ft	16.4ft	19.7ft	23ft	26.2ft	29.5ft	32.8ft	36.1ft	39.4ft	42.7ft	45.9ft	49.2ft	52.5ft	55.8ft	59.1ft	62.3ft	65.6ft
1426lx	357lx	158lx	89lx	57lx	40lx	29lx	22lx	18lx	14lx	12lx	10lx	8lx	7lx	6lx	6lx	5lx	4lx	4lx	4lx
132.5fcd	33.1fcd	14.7fcd	8.3fcd	5.3fcd	3.7fcd	2.7fcd	2.1fcd	1.6fcd	1.3fcd	1.1fcd	0.9fcd	0.8fcd	0.7fcd	0.6fcd	0.5fcd	0.5fcd	0.4fcd	0.4fcd	0.3fcd

## Intensities in 0° c-plane

0°	5°	10°	15°	20°	25°	30°	35°	40°	45°	50°	55°	60°	65°	70°	75°	80°	85°	90°	95°
1426	1422	1409	1386	1351	1307	1251	1184	1106	1017	918	808	689	563	430	293	166	66	12	2
100%	100%	99%	97%	95%	92%	88%	83%	78%	71%	64%	57%	48%	39%	30%	21%	12%	5%	1%	0%

## Intensities in 90° c-plane

0°	5°	10°	15°	20°	25°	30°	35°	40°	45°	50°	55°	60°	65°	70°	75°	80°	85°	90°	95°
1426	1422	1408	1384	1349	1303	1247	1180	1103	1015	915	805	683	552	415	276	149	55	11	2
100%	100%	99%	97%	95%	91%	87%	83%	77%	71%	64%	56%	48%	39%	29%	19%	10%	4%	1%	0%

## Intensities in 180° c-plane

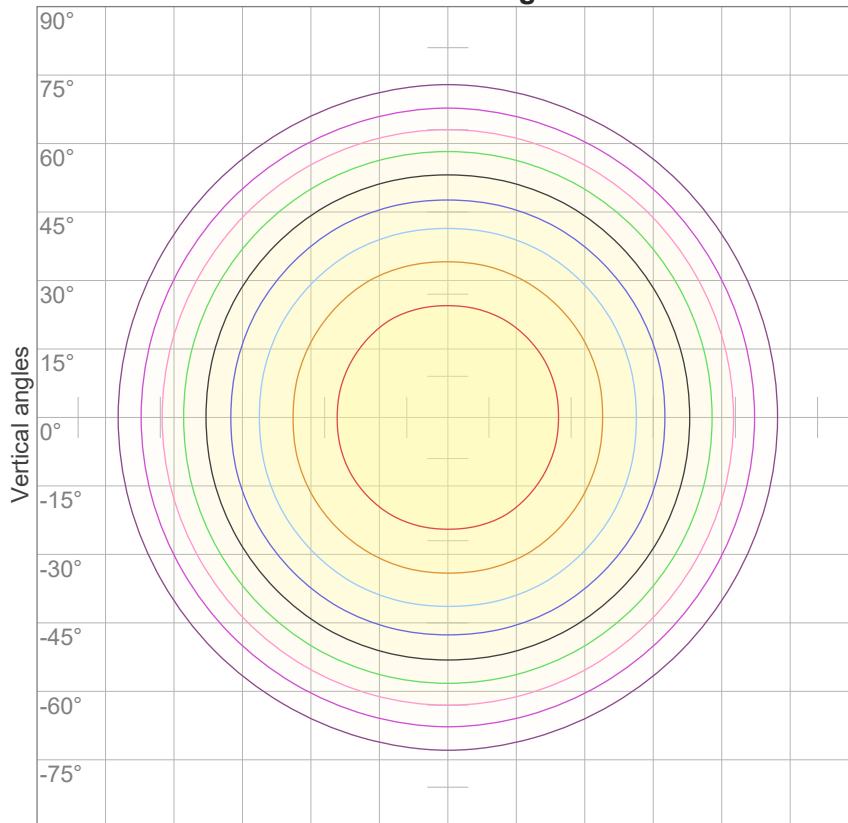
0°	5°	10°	15°	20°	25°	30°	35°	40°	45°	50°	55°	60°	65°	70°	75°	80°	85°	90°	95°
1426	1422	1409	1386	1351	1307	1251	1184	1106	1017	918	808	689	563	430	293	166	66	12	2
100%	100%	99%	97%	95%	92%	88%	83%	78%	71%	64%	57%	48%	39%	30%	21%	12%	5%	1%	0%

## Intensities in 270° c-plane

0°	5°	10°	15°	20°	25°	30°	35°	40°	45°	50°	55°	60°	65°	70°	75°	80°	85°	90°	95°
1426	1422	1408	1384	1349	1303	1247	1180	1103	1015	915	805	683	552	415	276	149	55	11	2
100%	100%	99%	97%	95%	91%	87%	83%	77%	71%	64%	56%	48%	39%	29%	19%	10%	4%	1%	0%

Beam angle 50%	Field angle 10%	Cutoff angle 2,5%	Intensity ratio in 120° cone	Intensity ratio in 90° cone
118.3°	160.8°	173°	78.3%	52.4%

**iso-candela diagram**



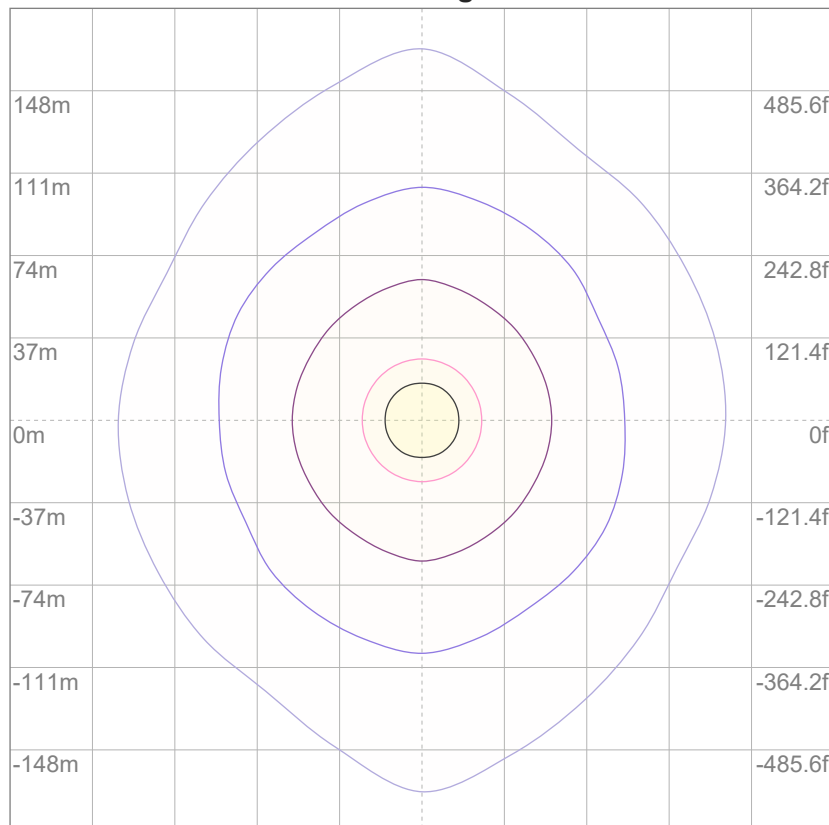
10%	143 cd
20%	285 cd
30%	428 cd
40%	571 cd
50%	713 cd
60%	856 cd
70%	999 cd
80%	1141 cd
90%	1284 cd

Conditions:

Number of c-planes: 12

Candela at center: 1426 cd

**iso-lux diagram**



3%	0.428 lx
5%	0.713 lx
10%	1.43 lx
30%	4.28 lx
50%	7.13 lx

Conditions:

Number of c-planes: 12

Lux at center: 14.3 lx

*Lux distribution on a surface when lamp is mounted at 10 meters from the surface.*

Glare evaluation according to UGR

p Ceiling	70	70	50	50	30	70	70	50	50	30
p Walls	50	30	50	30	30	50	30	50	30	30
p Floor	20	20	20	20	20	20	20	20	20	20
Room size X      Y	Viewing direction at right angles to lamp axis					Viewing direction parallel to lamp axis				
n/a	n/a	n/a	n/a	n/a	n/a	n/a	n/a	n/a	n/a	n/a
n/a	n/a	n/a	n/a	n/a	n/a	n/a	n/a	n/a	n/a	n/a
n/a	n/a	n/a	n/a	n/a	n/a	n/a	n/a	n/a	n/a	n/a
n/a	n/a	n/a	n/a	n/a	n/a	n/a	n/a	n/a	n/a	n/a
n/a	n/a	n/a	n/a	n/a	n/a	n/a	n/a	n/a	n/a	n/a
n/a	n/a	n/a	n/a	n/a	n/a	n/a	n/a	n/a	n/a	n/a
n/a	n/a	n/a	n/a	n/a	n/a	n/a	n/a	n/a	n/a	n/a
n/a	n/a	n/a	n/a	n/a	n/a	n/a	n/a	n/a	n/a	n/a
n/a	n/a	n/a	n/a	n/a	n/a	n/a	n/a	n/a	n/a	n/a
n/a	n/a	n/a	n/a	n/a	n/a	n/a	n/a	n/a	n/a	n/a
n/a	n/a	n/a	n/a	n/a	n/a	n/a	n/a	n/a	n/a	n/a
n/a	n/a	n/a	n/a	n/a	n/a	n/a	n/a	n/a	n/a	n/a
n/a	n/a	n/a	n/a	n/a	n/a	n/a	n/a	n/a	n/a	n/a
n/a	n/a	n/a	n/a	n/a	n/a	n/a	n/a	n/a	n/a	n/a
n/a	n/a	n/a	n/a	n/a	n/a	n/a	n/a	n/a	n/a	n/a
n/a	n/a	n/a	n/a	n/a	n/a	n/a	n/a	n/a	n/a	n/a
n/a	n/a	n/a	n/a	n/a	n/a	n/a	n/a	n/a	n/a	n/a
n/a	n/a	n/a	n/a	n/a	n/a	n/a	n/a	n/a	n/a	n/a
Variation of the observer position for the luminaire distance S										
n/a	n/a					n/a				
n/a	n/a					n/a				
n/a	n/a					n/a				
CIE 117-1995. Corrected glare indices referring to 4329 lm total luminous flux										

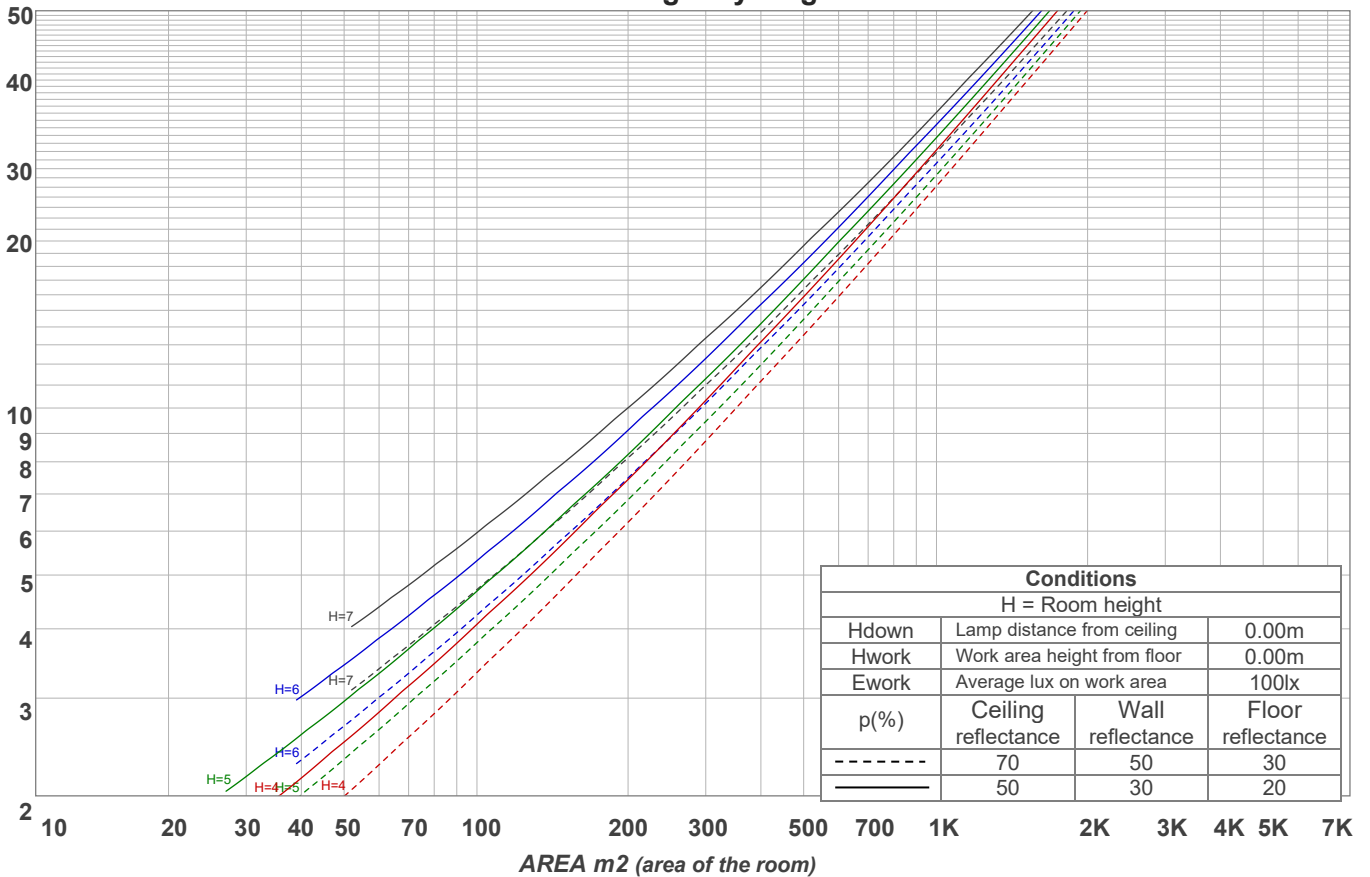
UGR data could not be calculated due to missing/wrong symmetry. Go to Edit -> Photometric -> Corrections and select Correct asymmetry (UGR not defined for asymmetrical distributions)..

## Coefficients of Utilization

Ceiling reflectance	80				70				50			30			10			0
Wall reflectance	70	50	30	10	70	50	30	10	50	30	10	50	30	10	50	30	10	0
Floor reflectance	20	20	20	20	20	20	20	20	20	20	20	20	20	20	20	20	20	0
RCR	(RCR: Room Cavity Ratio) Room Values are expressed as percentage of Lumens delivered to the task surface																	
0	119	119	119	119	116	116	116	116	111	111	111	106	106	106	102	102	102	99
1	109	104	100	96	106	102	98	94	97	94	91	93	91	88	89	87	85	83
2	99	90	83	78	96	88	82	77	85	79	75	81	77	73	78	75	71	69
3	90	79	71	64	87	77	70	64	74	68	62	72	66	61	69	64	60	58
4	82	70	61	54	80	68	60	54	66	59	53	63	57	52	61	56	51	49
5	75	62	53	46	73	61	53	46	59	51	46	57	50	45	55	49	45	42
6	69	56	47	40	67	55	46	40	53	45	40	51	45	39	50	44	39	37
7	64	51	42	36	63	50	41	35	48	41	35	47	40	35	45	39	34	32
8	60	46	38	32	58	45	37	31	44	37	31	43	36	31	42	35	31	29
9	56	42	34	28	54	42	34	28	40	33	28	39	33	28	38	32	28	26
10	52	39	31	26	51	38	31	26	37	30	25	36	30	25	35	29	25	23

LAMPS (number of lamps)

## Luminaire budgetary diagram



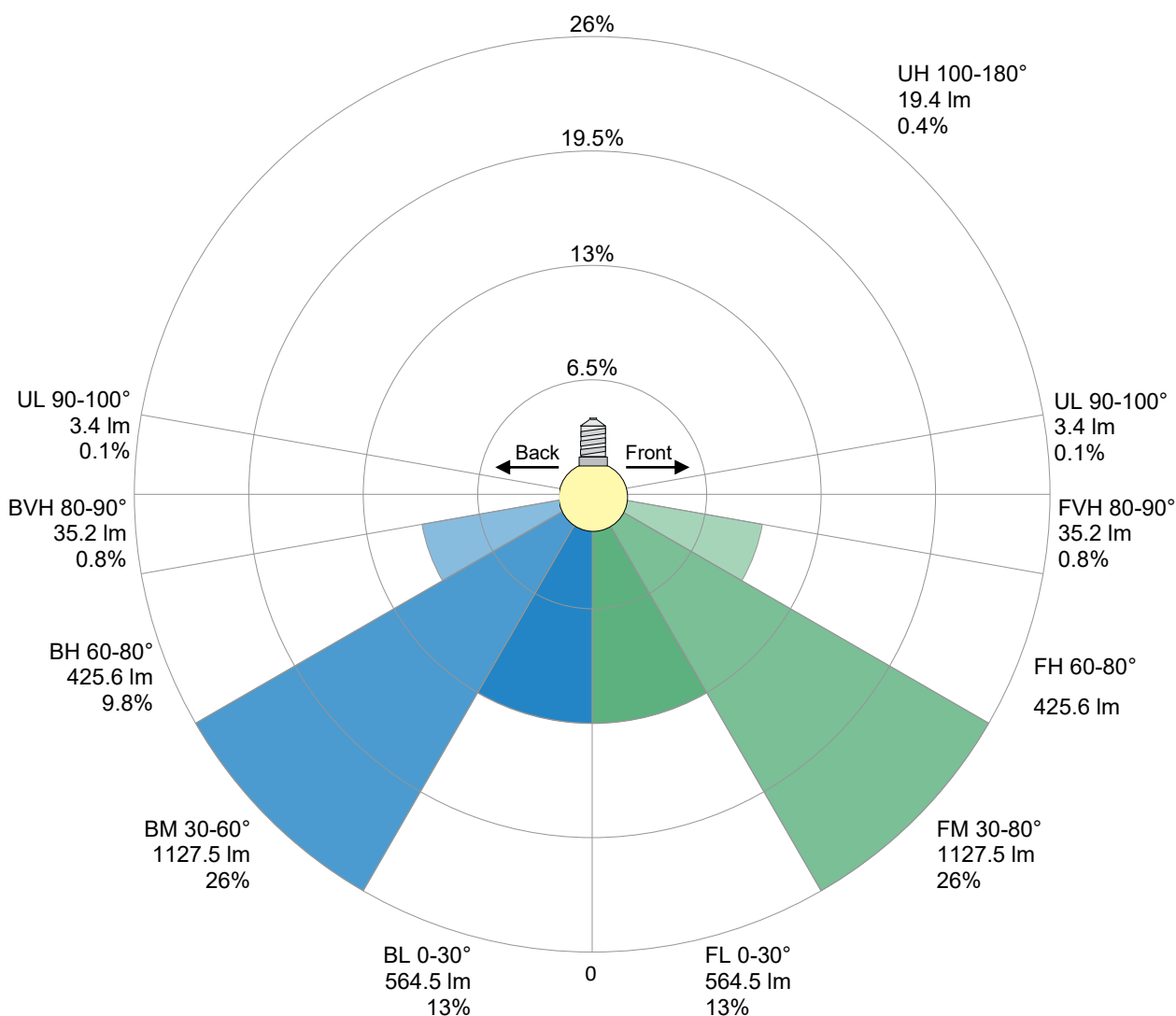
## Zonal Lumen Summary

0°-10°	10°-20°	20°-30°	30°-40°	40°-50°	50°-60°	60°-70°	70°-80°	80°-90°
135 lm	392 lm	603 lm	743 lm	789 lm	727 lm	554 lm	297 lm	66.3 lm
90°-100°	100°-110°	110°-120°	120°-130°	130°-140°	140°-150°	150°-160°	160°-170°	170°-180°
2.55 lm	2.28 lm	2.88 lm	3.23 lm	3.32 lm	3.04 lm	2.48 lm	1.60 lm	0.560 lm

LCS table

BUG rating:	B2 U2 G1	
Forward light	Lumens	Lumens %
Low(0-30):	564.5	13%
Medium(30-60):	1127.5	26%
High(60-80):	425.6	9.8%
Very high(80-90):	35.2	0.8%
Back light		
Low(0-30):	564.5	13%
Medium(30-60):	1127.5	26%
High(60-80):	425.6	9.8%
Very high(80-90):	35.2	0.8%
Uplight		
Low(90-100):	3.4	0.1%
High(100-180):	19.4	0.4%

LCS graph





**Flicker curve (complete sampled flicker signal)**



**Flicker frame (frame of one flicker period)**



**Flicker FFT (frequency scope of flicker curve)**



**Flicker results:**

Flicker frequency:		n/a Hz	
Flicker index:	n/a	JA8/10 40Hz	n/a %
Flicker percentage:	n/a %	JA8/10 90Hz	n/a %
SVM: (Visual flicker)	n/a	JA8/10 200Hz	n/a %
PstLM	n/a	JA8/10 400Hz	n/a %
Mp	n/a	JA8/10 1000Hz	n/a %

**Flicker conditions:**

Sample rate:	n/a samples/second
--------------	--------------------